



INSTALLATION INSTRUCTIONS

APPLICATION: 3.5" CONTOUR BULL BAR / 2014-2015 TOYOTA TUNDRA
PART NUMBER: 32-31070, 32-31075, 32-31075T

AUTOMOTIVE PRODUCTS, INC.

ITEM	QUANTITY	DESCRIPTION	TOOLS NEEDED
1	1	HD CONTOUR BAR	TORQUE WRENCH
2	1	MOUNTING BRACKET DRIVER SIDE	
3	1	MOUNTING BRACKET PASSENGER SIDE	RATCHET
4	1	MOUNTING BRACKET SUPPORT STRAP DRIVER SIDE	10MM SOCKET
5	1	MOUNTING BRACKET SUPPORT STRAP PASSENGER SIDE	17MM SOCKET
6	4	M12 HEX HEAD CAP SCREWS (STAINLESS)	19MM SOCKET
7	8	M12 FLAT WASHERS (STAINLESS)	10MM WRENCH
8	4	M12 LOCK WASHERS (STAINLESS)	14MM WRENCH
9	4	M12 HEX NUTS (STAINLESS)	19MM WRENCH
10	2	M10 BUTTON HEAD CAP SCREWS (STAINLESS)	5MM HEX KEY
11	2	M10 FLAT WASHERS (STAINLESS)	
12	2	M10 LOCK WASHERS (STAINLESS)	

ANTI-SEIZE LUBRICANT MUST BE USED ON ALL STAINLESS STEEL FASTENERS TO PREVENT THREAD DAMAGE AND GALLING

1. Remove contents from box, verify if all parts listed are present and free from damage. Carefully read and understand all instructions before attempting installation.
2. Start installation at the driver side. Locate the front tow hooks and remove the two bolts with the 17mm socket.
3. Remove the bottom factory M10 flange nut from each side of the frame where the mounting brackets will mount. Note: Although a 14mm wrench can be used for this step it is much easier with a 3/8" drive mid-length socket such as Snap-On P/N FMS14 or equivalent.
4. Using the factory nut and bolts attach the driver side mounting bracket over the bumper mount stud and sandwich between the tow hook and frame. See figures 1 and 2. *Do not fully tighten at this time.*
5. Repeat steps 2-4 for the passenger side.
6. Open the hood and remove the four upper grille bolts with the 10mm socket and also remove the two outer christmas tree clips. FIGURES 3 & 4 Remove the grille by lifting up on the top and pulling away from the vehicle. The lower portion of the grille is held on by two clips that can be released by pushing down on the grille.
7. Locate the factory bolts on the top of the bumper and remove them with the 10mm wrench. FIGURE 5
8. Mount the support straps with the factory bolts. FIGURE 6 *Do not fully tighten at this time.*
9. With assistance mount the HD Contour Bar to the lower brackets using the M12 hardware and 19mm socket and wrench. FIGURE 7 *Do not fully tighten at this time.*
10. Attached the support straps to the HD Contour Bar with the M10 hardware using the 5mm hex key tool. FIGURE 8 *Do not fully tighten at this time.*
11. Level and adjust Contour Bar as needed and tighten all hardware at this time. FIGURE 9 Torque M12 hardware to 50-55 ft-lbs, M10 hardware to 25 ft-lbs.
12. Re-attach the front grille following the steps to remove the grille in reverse order.



Westin Automotive Products, Inc.
320 Covina Blvd
San Dimas, Ca. 91773

Thank You for choosing Westin products
For Additional installation assistance please call
Customer service (800) 793-7846
www.westinautomotive.com



Figure 1

Remove bumper nut
Driver Side Shown

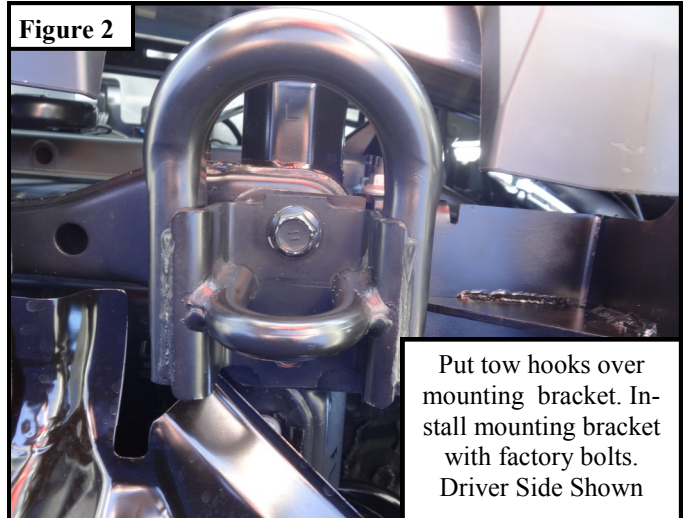


Figure 2

Put tow hooks over
mounting bracket. In-
stall mounting bracket
with factory bolts.
Driver Side Shown

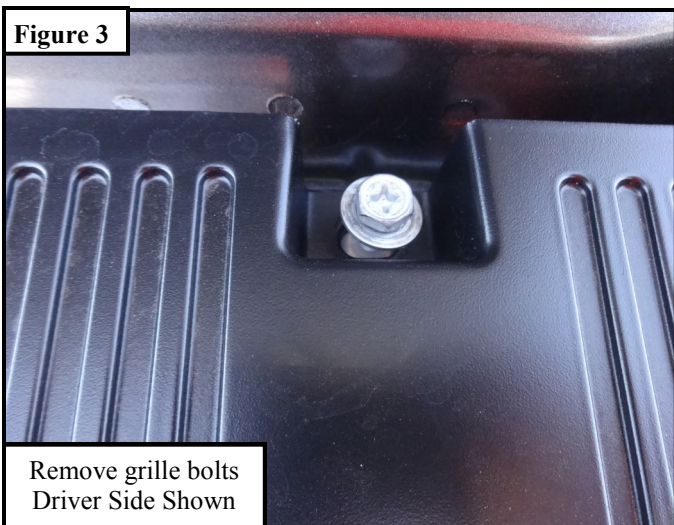


Figure 3

Remove grille bolts
Driver Side Shown

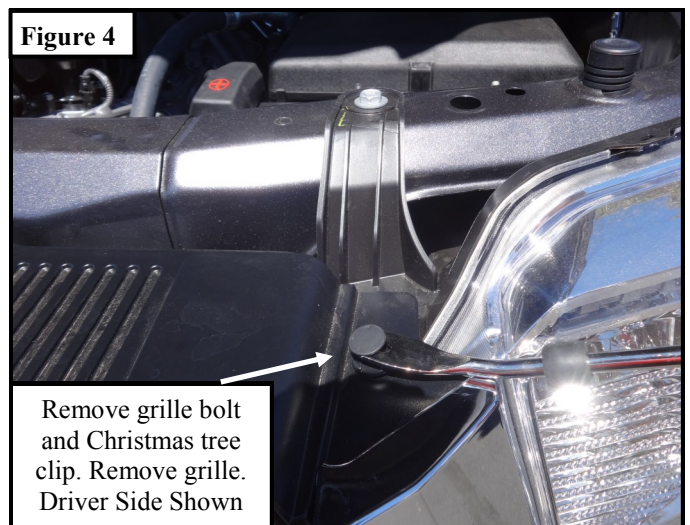


Figure 4

Remove grille bolt
and Christmas tree
clip. Remove grille.
Driver Side Shown

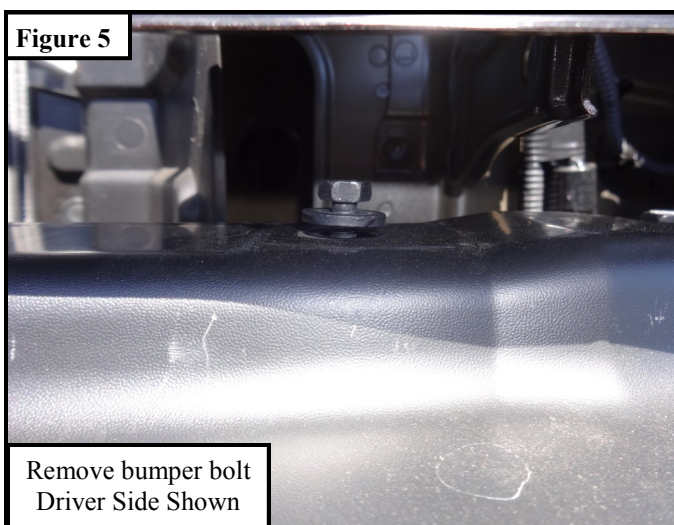


Figure 5

Remove bumper bolt
Driver Side Shown

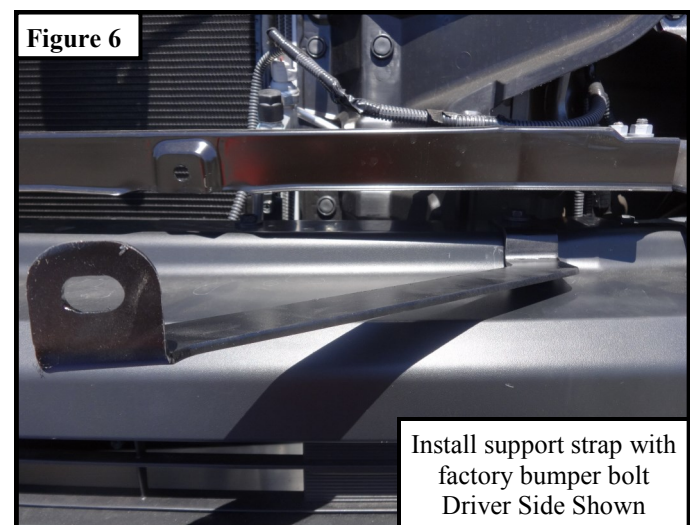


Figure 6

Install support strap with
factory bumper bolt
Driver Side Shown

Figure 7

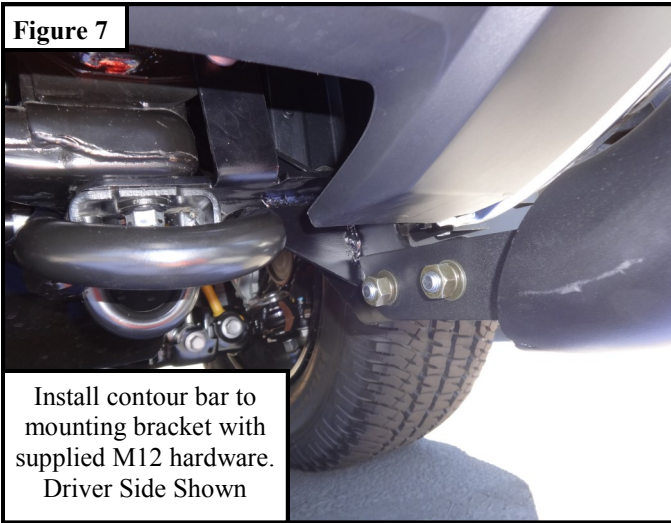
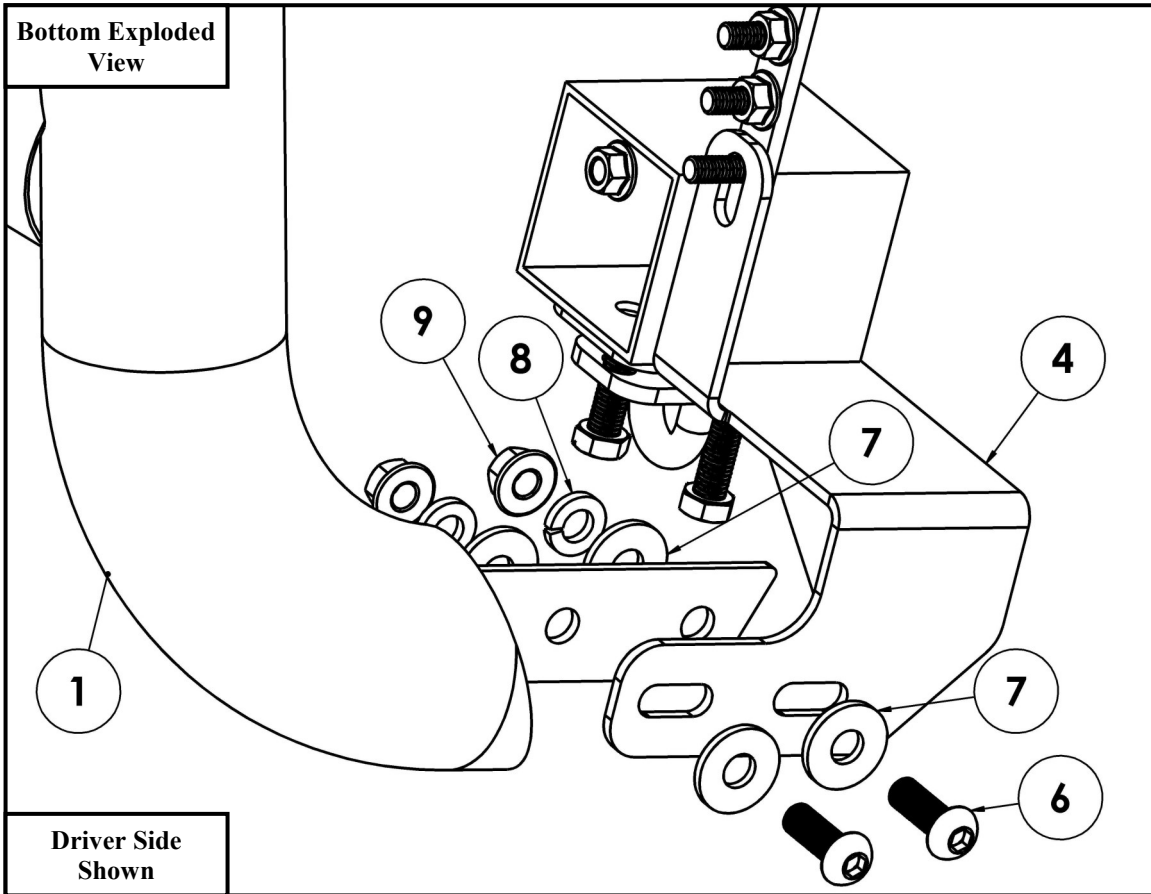
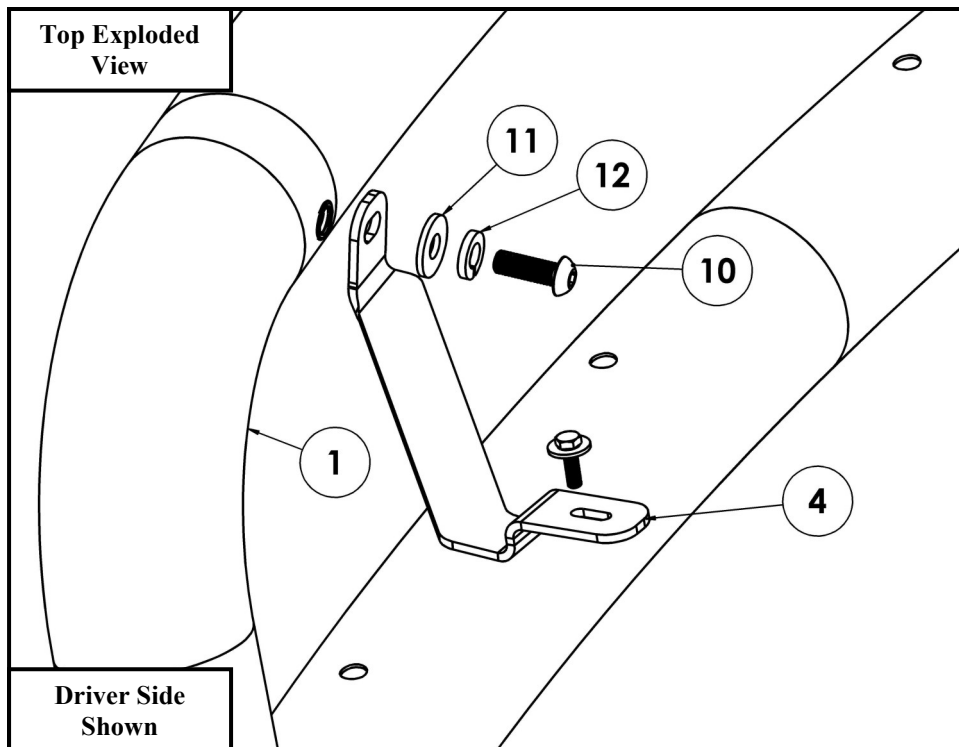


Figure 8



Westin Automotive Products, Inc.
320 Covina Blvd
San Dimas, Ca. 91773

Thank You for choosing Westin products
For Additional installation assistance please call
Customer service (800) 793-7846
www.westinautomotive.com



CARE INSTRUCTIONS

- REGULAR WAXING IS RECOMMENDED. DO NOT USE ANY TYPE OF POLISH OR WAX THAT MAY CONTAIN ABRASIVES.
- STAINLESS STEEL PRODUCTS CAN BE CLEANED WITH MILD SOAP AND WATER. STAINLESS STEEL POLISH SHOULD BE USED TO POLISH SMALL SCRATCHES.
- GLOSS BLACK FINISHES SHOULD BE CLEANED WITH MILD SOAP AND WATER.



Westin Automotive Products, Inc.
320 Covina Blvd
San Dimas, Ca. 91773

Thank You for choosing Westin products
For Additional installation assistance please call
Customer service (800) 793-7846
www.westinautomotive.com