



SIGNATURE OF QUALITY

INSTRUCTIONS—INSTRUCCIONES—CONSIGNES

APPLICATION: 2013-2014 FORD ESCAPE

APP PART # 32-21010, 32-21015

CONTOUR LIGHT BAR

AUTOMOTIVE PRODUCTS, INC.

ITEM	QUANTITY	DESCRIPTION	TOOLS NEEDED
1	1	CONTOUR BAR	TORQUE WRENCH
2	1	MOUNTING BRACKET DRIVER SIDE	RATCHET
3	1	MOUNTING BRACKET PASSENGER SIDE	T30 TORX
4	4	MOUNTING BRACKET SPACER	7MM SOCKET
5	2	M12 HEX HEAD CAP SCREW	10MM SOCKET
6	2	M12 FLAT WASHERS	13MM SOCKET
7	2	M12 LOCK WASHERS	19MM SOCKET
8	4	M8 HEX HEAD CAP SCREW	
9	8	M8 FLAT WASHER	
10	4	M8 LOCK WASHERS	
11	4	M8 HEX NUT	

ANTI-SEIZE LUBRICANT MUST BE USED ON ALL STAINLESS STEEL FASTENERS TO PREVENT THREAD DAMAGE AND GALLING

1. Remove contents from box, verify if all parts listed are present and free from damage. Carefully read and understand all instructions before attempting installation.
2. From underneath the front of the vehicle use the T30 TORX bit and 7mm socket to remove the plastic lower splash guard and set aside.
3. Starting on the drivers side, remove the two factory cap screws from the lower frame support using the 10mm socket. (fig 1)
Note: these screws will not be re-installed.
4. Replace the factory cap screws using two M8 hex head cap screws (item 8), and two M8 flat washers (item 9). Torque M8 cap screws to 15-20 ft-lbs.
5. Install two mounting bracket spacers (item 4) over the frame support nuts. (fig 2)
6. Attach the drivers side mounting bracket (item 2) over the spacers using two M8 hex nuts (item 11), two M8 flat washers (item 9), and two M8 lock washers (item 10). (fig 3) Do not fully tighten at this time.
7. Follow steps 3-6 for the passenger side.
8. Re-attach lower splash guard and trim as necessary to fit around mounting brackets. (fig 6)
9. Install the contour bar (item 1) to the mounting brackets with the M12 hex head cap screws (item 5), M12 lock washers (item 7), and M12 flat washers (item 6). (fig 4)
10. Level and adjust contour bar and tighten all hardware at this time. (fig 5)
11. Torque M12 hardware to 50-55 ft-lbs and M8 hardware to 15-20 ft-lbs.

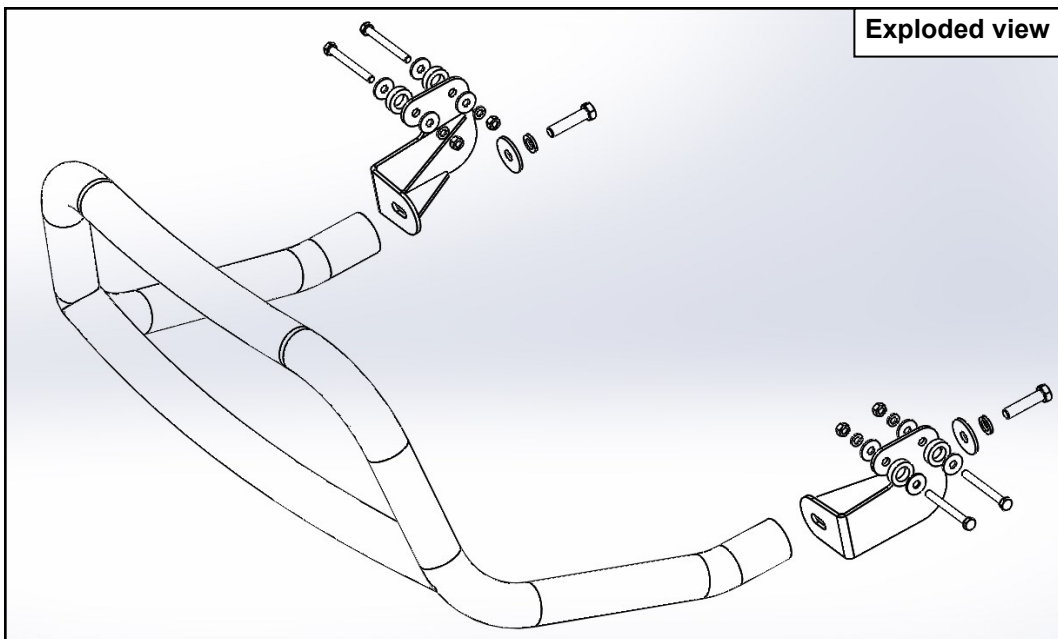
CARE INSTRUCTIONS

- REGULAR WAXING IS RECOMMENDED. DO NOT USE ANY TYPE OF POLISH OR WAX THAT MAY CONTAIN ABRASIVES
- STAINLESS STEEL PRODUCTS CAN BE CLEANED WITH MILD SOAP AND WATER. STAINLESS STEEL POLISH SHOULD BE USED TO POLISH SMALL SCRATCHES.
- GLOSS BLACK FINISHES SHOULD BE CLEANED WITH MILD SOAP AND WATER

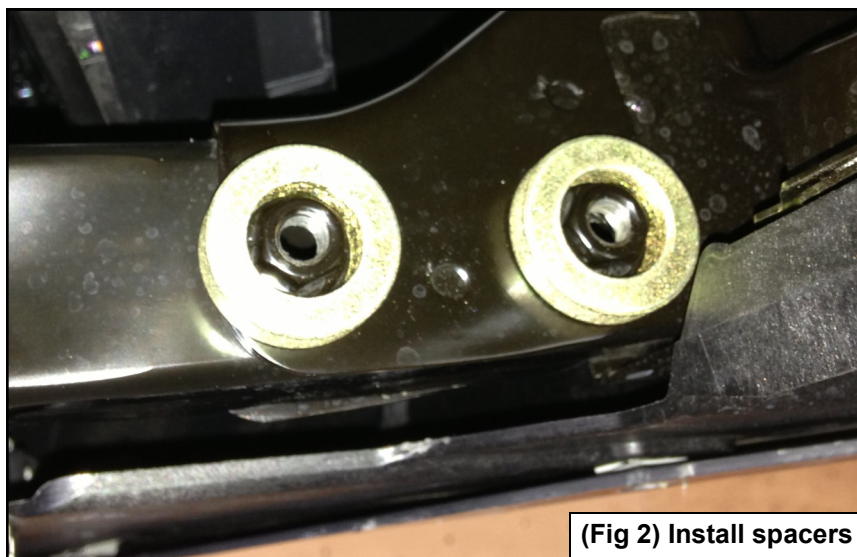


Westin Automotive Products, Inc.
320 Covina Blvd
San Dimas, Ca. 91773

Thank You for choosing Westin products
For Additional installation assistance please call
Customer service (800) 793-7846
www.westinautomotive.com



(Fig 1) Remove factory cap screws

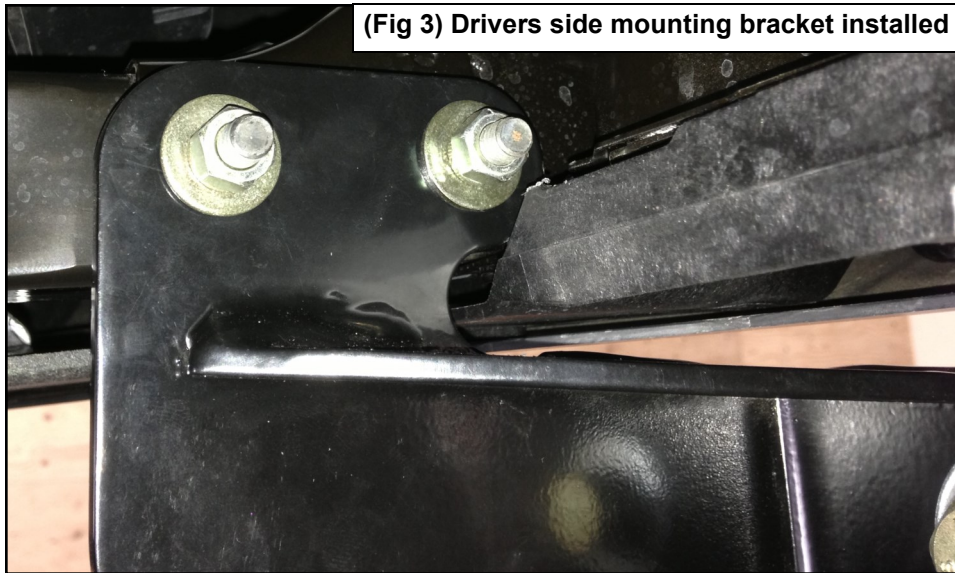


(Fig 2) Install spacers

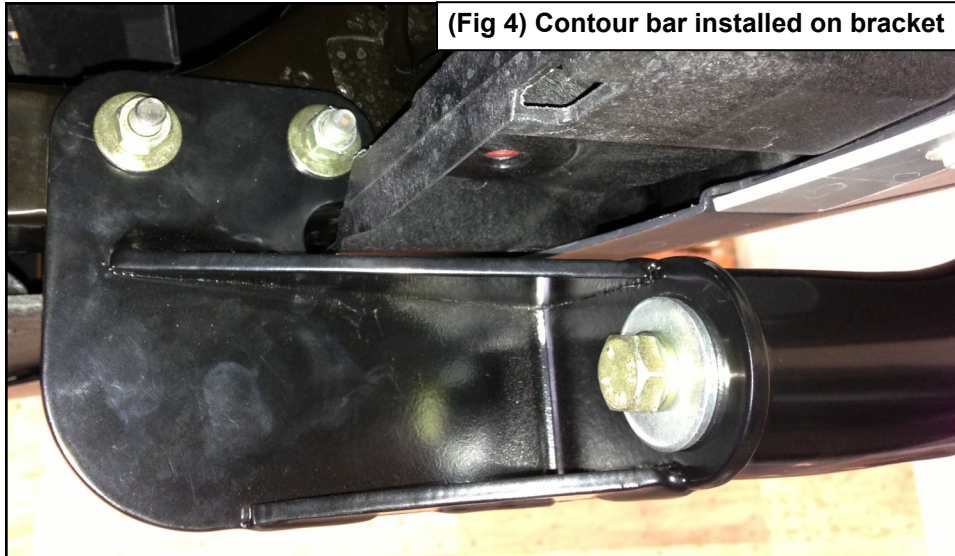


Westin Automotive Products, Inc.
320 Covina Blvd
San Dimas, Ca. 91773

(Fig 3) Drivers side mounting bracket installed



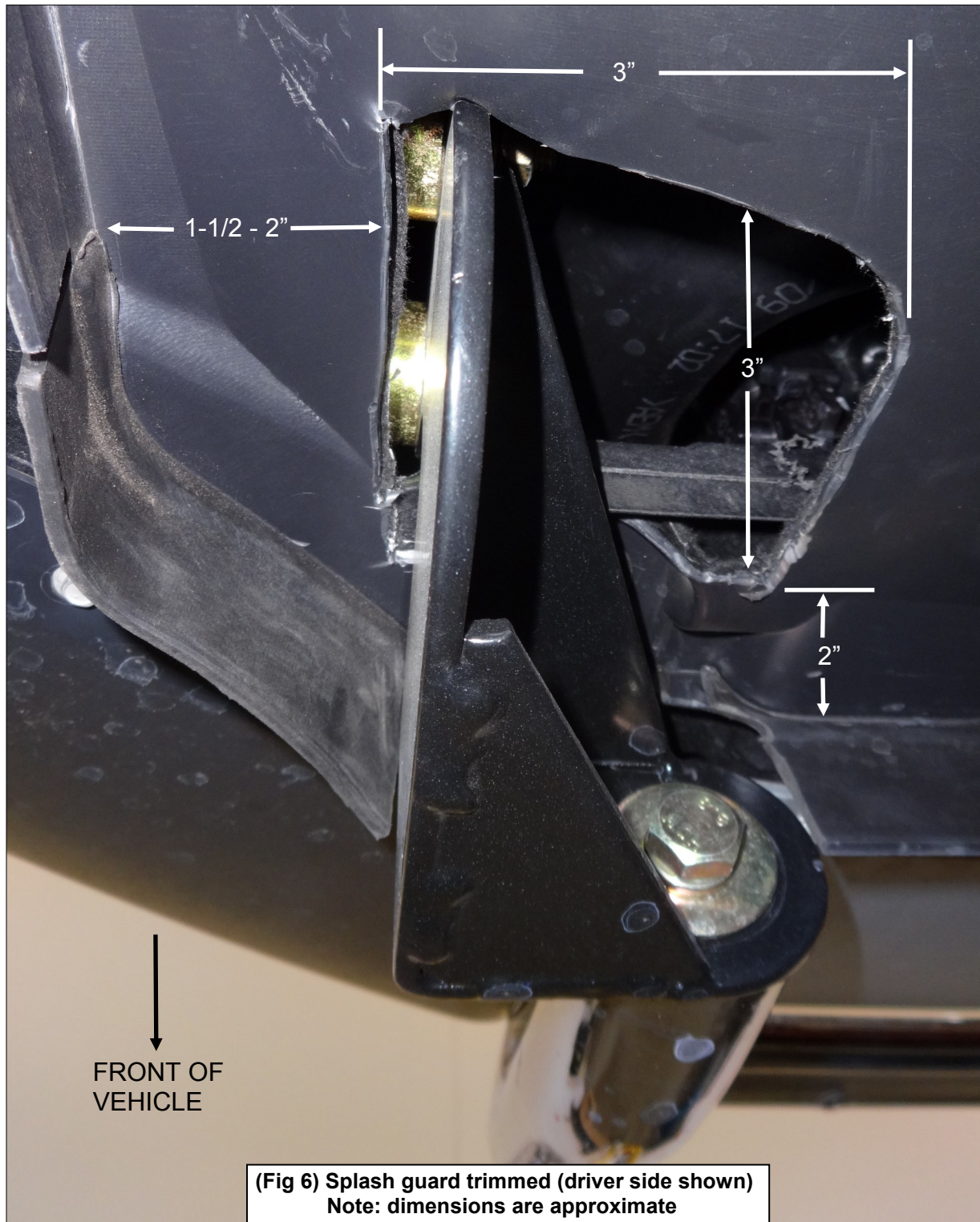
(Fig 4) Contour bar installed on bracket



(Fig 5) Contour bar installed



Westin Automotive Products, Inc.
320 Covina Blvd
San Dimas, Ca. 91773

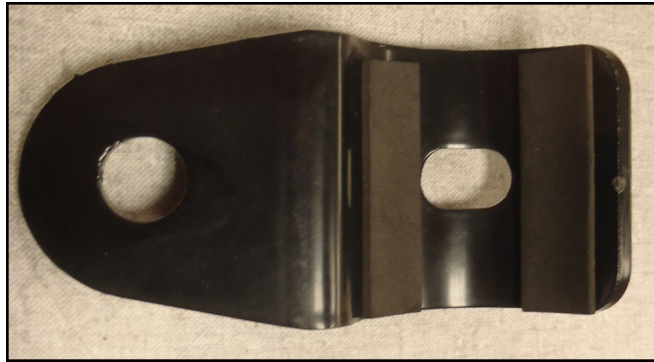


Westin Automotive Products, Inc.
320 Covina Blvd
San Dimas, Ca. 91773

OPTIONAL LIGHT MOUNT TABS

ITEM	QUANTITY	DESCRIPTION	TOOLS NEEDED
12	2	LIGHT MOUNT BRACKET TABS	HEX KEY TOOL (INCLUDED)
13	2	M10 BUTTON HEAD CAP SCREW	
14	2	M10 TOOTHED LOCK WASHER	
15	2	M10 FLAT WASHER	
16	1	ADHESIVE FOAM TAPE	

1. Remove contents from box, verify if all parts listed are present and free from damage. Carefully read and understand all instructions before attempting installation.
2. Apply foam tape (item 16) to front and back of the tab facing where it mounts to the tube. (fig 7)
3. Using the supplied hex key tool, button head cap screws (item 13), lock washers (item 14), and flat washers (item 15), attach the bracket tabs (item 12) to the threaded inserts in the bottom of the cross tube. (fig 8)



(Fig 7) Foam tape applied to light tab



(Fig 8) Light tab installed on bar



(Fig 9) Optional lights installed



Westin Automotive Products, Inc.
320 Covina Blvd
San Dimas, Ca. 91773