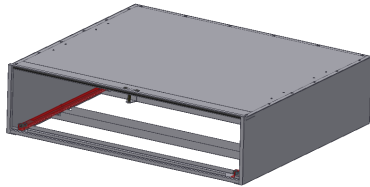




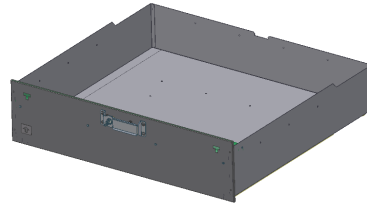
INSTALLATION INSTRUCTIONS

Part # 188 Ford Escape Hybrid Rear Cargo Drawer Mounting Kit
(This kit is designed to mount on the rear cargo drawer sold separately)
Please read and fill out the enclosed warranty registration card to activate your warranty.

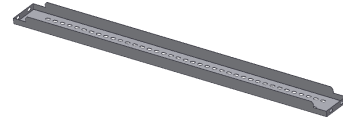
Parts used which are included with the drawer assembly



Enclosure

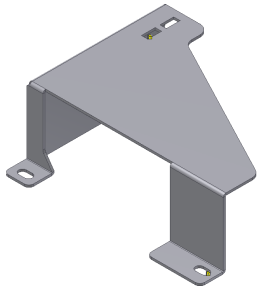


Drawer

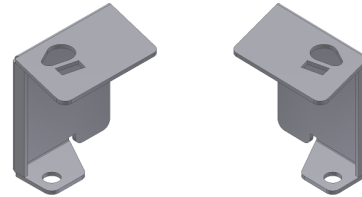
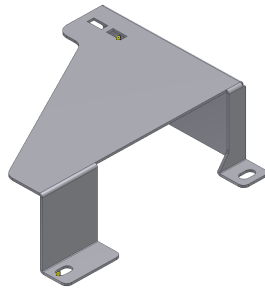


#8 (2) Mounting Brackets

#188 Mounting Kit Parts

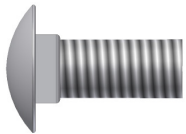


5.1.3.3 / 5.1.3.4 (L&R) Front Mounting Brackets

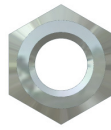


5.1.3.1 / 5.1.3.2 (L&R) Rear Mounting Brackets

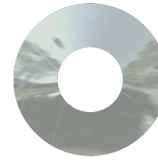
188 Shipping Package



5.1.3.5.4 (6) 5/16x7/8" Bolts

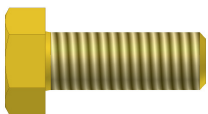


5.1.3.5.3 (6) 5/16 Nuts

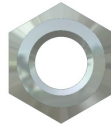


5.1.3.5.5 (6) 5/16 Wide OD Washers

Parts used from the drawer shipping package (Included with drawer)



5.2.4 (4) 5/16-18x7/8" Bolts



5.2.2 (4) 5/16 Nuts



5.2.3 (8) 5/16 Narrow OD Washers

Tools required

- 1/2" Shallow socket with a long extension and a ratchet (Universal joint also helps)
- 1/2" Wrench
- 13mm socket
- 8mm socket
- 8mm Wrench
- Phillips head screw driver

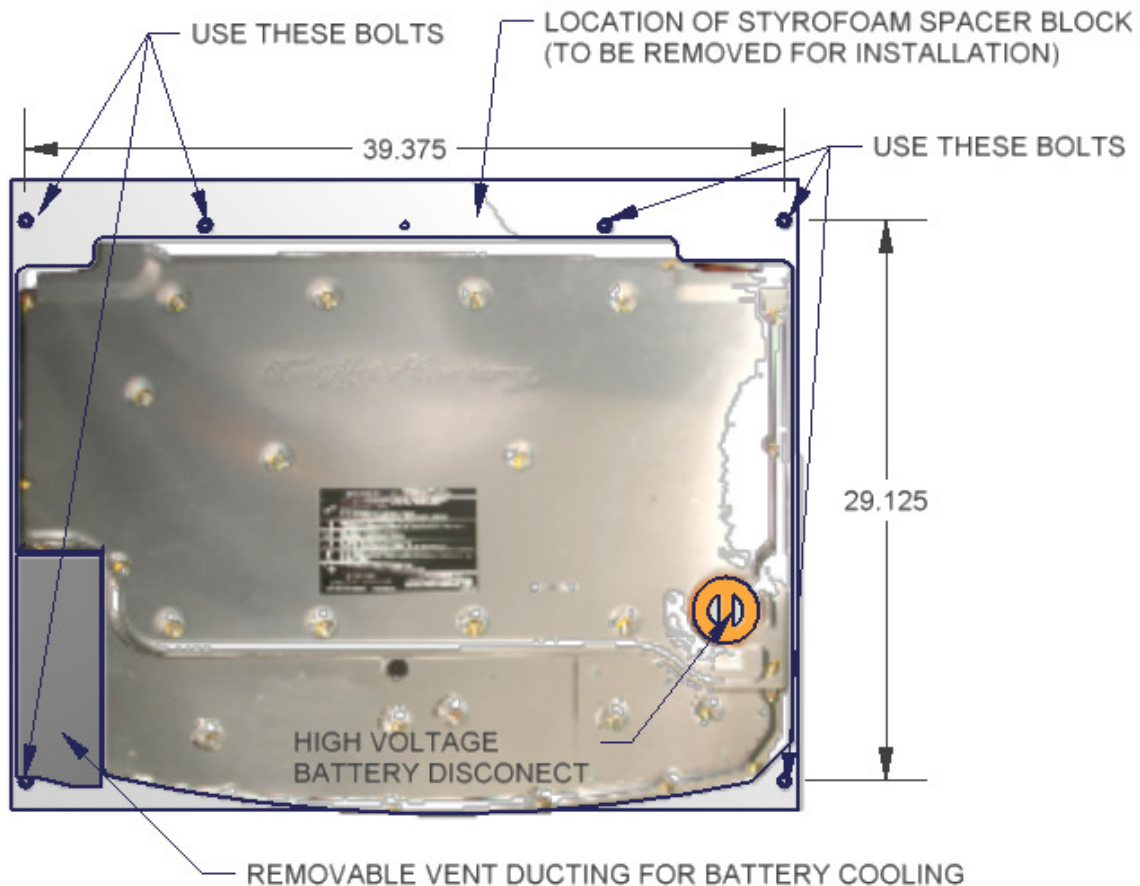
WARNING! This drawer is rated to hold a maximum of 250# evenly distributed. The enclosure is rated to hold 250# on top evenly distributed. This would include any dividers mounted in the drawer. Never stand or sit on the Tuffy drawer or enclosure. The vehicle should not be operated with the drawer opened and not secured shut. The drawer should not be operated/opened when not level. Keep hands clear of moving parts and pinch points when maneuvering the drawer. Do not exceed the rated weight capacity for this product.

Mounting Directions

FOR SAFETY THE DRAWER REMOVAL REQUIRES AT LEAST (2) PEOPLE. THE DRAWER SHOULD ALWAYS BE EMPTY BEFORE REMOVING IT. CONSTANT SUPPORT MUST BE APPLIED TO HOLD UP THE FRONT OF THE DRAWER THROUGHOUT THE ENTIRE REMOVAL PROCESS SO IT DOES NOT CAUSE INJURY AND/OR DAMAGE.

1. Check the floor and wheel well panels of the vehicle for cubby holes containing important gear or require access in an emergency (Jack, spare tire, spare tire access, fuses, etc.). If floor access is required make sure that it is exposed and accessible through the opening in the bottom of the drawer enclosure when the drawer is removed. Remove and relocate any inaccessible items as required. (The high voltage battery disconnect on top of the battery will be accessible with the drawer removed from the installed enclosure.)
2. Remove the carpet covering the battery pack and the black styrofoam spacer block between the front of the battery pack the back of the rear seats. (The carpet can be cut around brackets and reinstalled if desired.)
3. The mounting bracket location measurements in these instructions are for a standard Ford Escape Hybrid rear tub configuration. If the dimensions in the vehicle in which the drawer will be installed vary significantly from the illustration shown in Figure 1, a different mounting kit will be required. (See Figure 1)

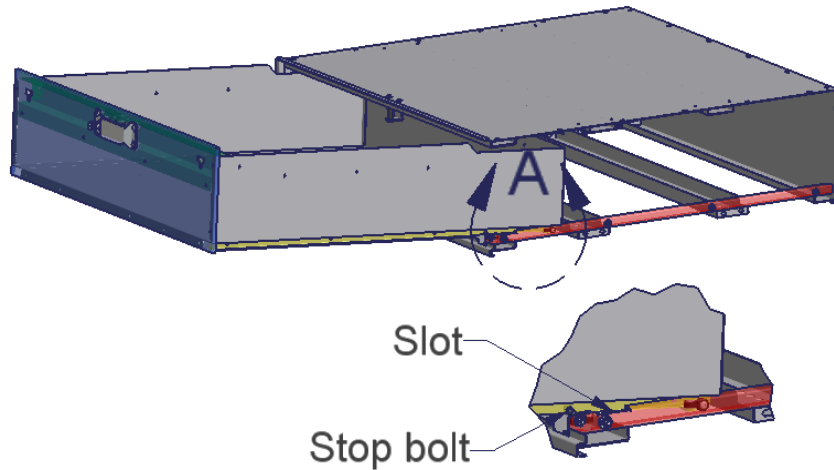
FIGURE 1



4. Remove the black plastic vent duct at the left rear corner of the battery pack with an 8mm socket and Philips head screw driver. **IMPORTANT: VENT DUCT MUST BE REINSTALLED DURING DRAWER INSTALLATION FOR BATTERY COOLING SYSTEM TO FUNCTION PROPERLY!!** (See Figure 1)
5. Remove the 6 battery pack mounting bolts indicated in the above illustration by the note "USE THESE BOLTS". They will be reused. (See Figure 1)

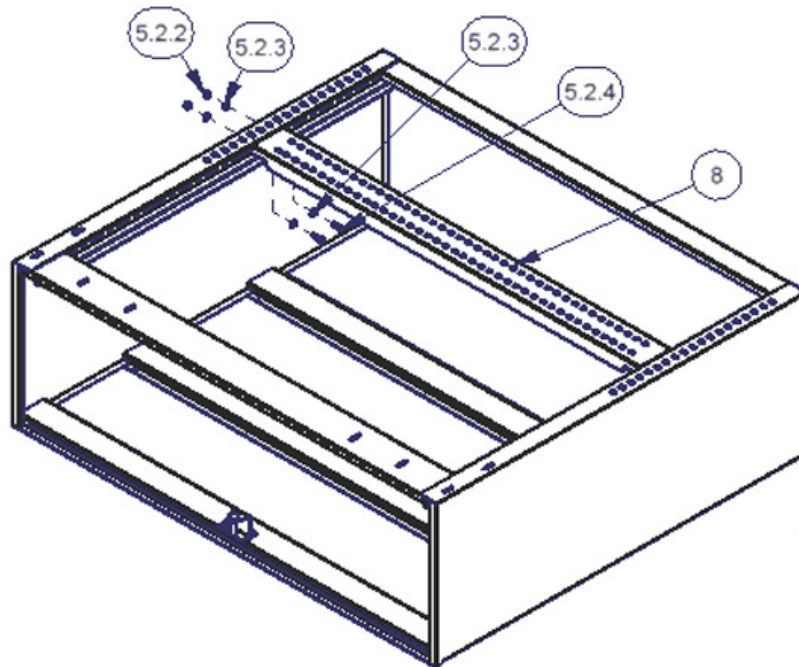
6. Remove the drawer from the enclosure. Pull the drawer out until it stops. Lift up the front of the drawer and pull it out a few inches further until the stop bolts on the drawer slides clear the rollers on the enclosure slide. Pull the drawer again until it stops being sure to support the front of the drawer. Pivot the front of the drawer down and lift the rear end of the drawer out so the rollers on the drawer slides pull free through the slots in the enclosure slides. Reverse steps to install. (See Figure 2)

FIGURE 2



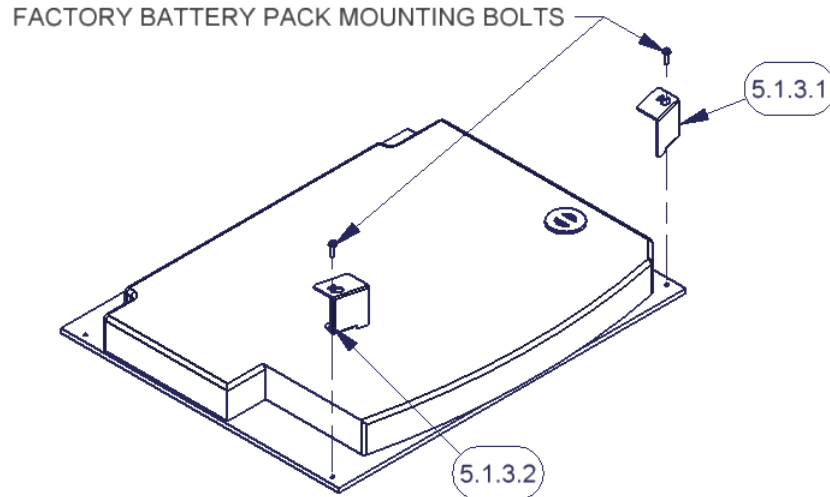
7. For the standard mounting application described above, fasten only (1) #8 mounting bracket to the drawer enclosure, in the center of the drawer, with the illustrated hardware. This will not be used for mounting; it is to add support to the drawer sides. These bolts are difficult to reach; Use a $\frac{1}{2}$ " shallow socket with a long extension and a ratchet (Universal joint also helps) and a $\frac{1}{2}$ " wrench on the other end. Unbolting the slide using a $\frac{7}{16}$ " wrench will make things easier as well. **These parts and fasteners are included with the drawer.** (See Figure 3)

FIGURE 3



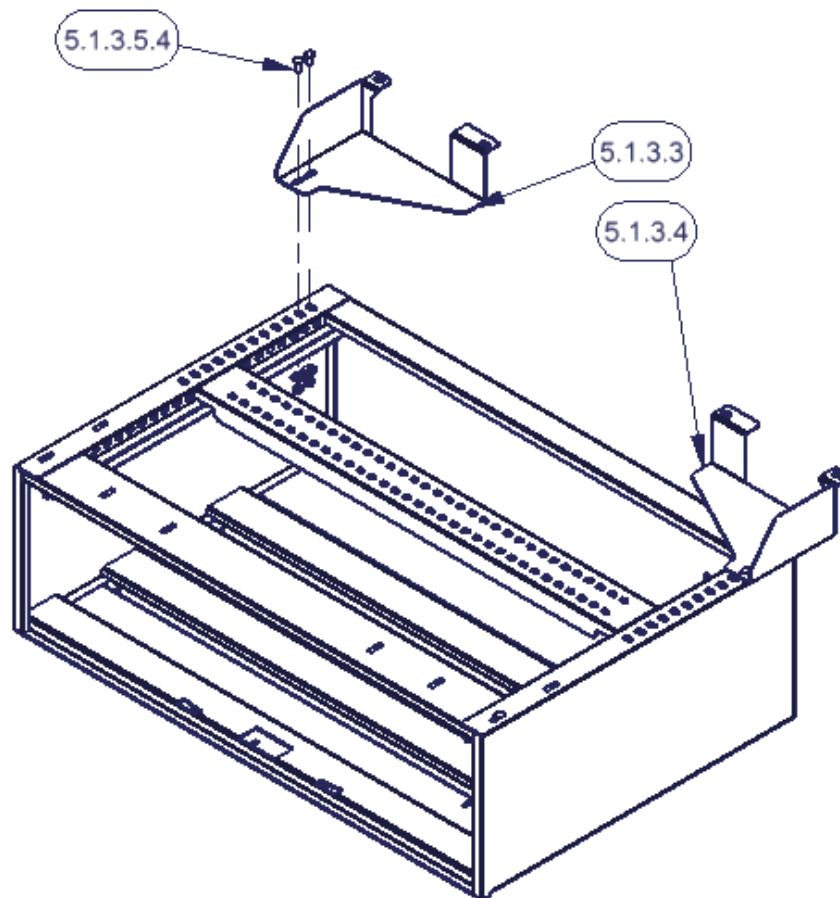
8. Fasten the rear mounting brackets (5.1.3.1, 5.1.3.2) to the vehicle using 2 of the factory battery pack mounting bolts. Position the brackets at the correct angle and tighten the mounting hardware. The mounting hardware will not be accessible when the drawer enclosure is installed. (See Figure 4)

FIGURE 4



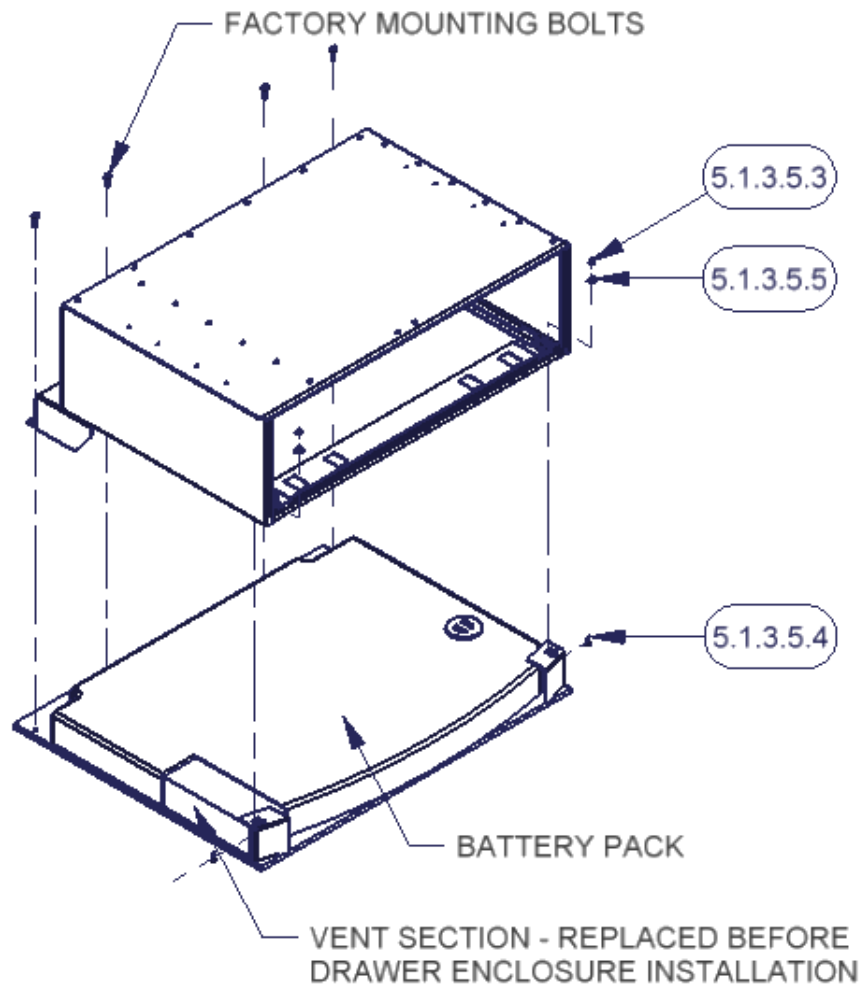
9. Fasten the front mounting brackets (5.1.3.3, 5.1.3.4) to the bottom of the drawer enclosure with the hardware illustrated. Be sure they are oriented and located as shown. Leave the bolts slightly loose so the brackets can be adjusted in order to center the drawer in the rear of the vehicle. (See Figure 5)

FIGURE 5



10. **IMPORTANT:** Replace the vent ducting using all previously removed factory mounting hardware.
11. Place the drawer enclosure with the attached front mounting brackets in the rear of the vehicle. The enclosure should overlap onto the rear sill by ¼". Check that the tailgate shuts with enough clearance for the drawer handle. Also make sure the high voltage battery disconnect on top of the battery pack is removable.
12. Fasten the front brackets (5.1.3.3, 5.1.3.4) and enclosure to the floor of the vehicle as illustrated using the OEM battery pack mounting hardware that was removed in step 5.
13. Fasten the enclosure to the previously installed rear brackets (5.1.3.1, 5.1.3.2) using the illustrated hardware. Shift the drawer enclosure side to side and/or front to rear as required for vehicle clearance and to maintain battery disconnect clearance. Tighten all mounting hardware. (See Figure 5)

FIGURE 5



14. Insert the drawer and test the operation. Make sure there is clearance between the drawer handle and the rear tailgate. Test to make sure that access to any important compartments in the floor or side panels are maintained.

ATTENTION:

FREQUENT LUBRICATION IS NECESSARY ON THE LOCKING SYSTEM

The pushbutton lock contains an "O" ring seal to protect the interior from dust and water. If this mechanism is not lubricated regularly it will become difficult to operate and it may not return to its home position preventing the key from operating the lock. If this happens simply pull up on the pushbutton to manually bring it back to its home position. Lubricate the pushbutton with a light lubricant such as silicone spray. The pushbutton may have to be periodically disassembled and cleaned.

Call (970) 564-1762 for Technical Support

Page 5 of 5 - 7/24/2009