

# RETRAX ONE™

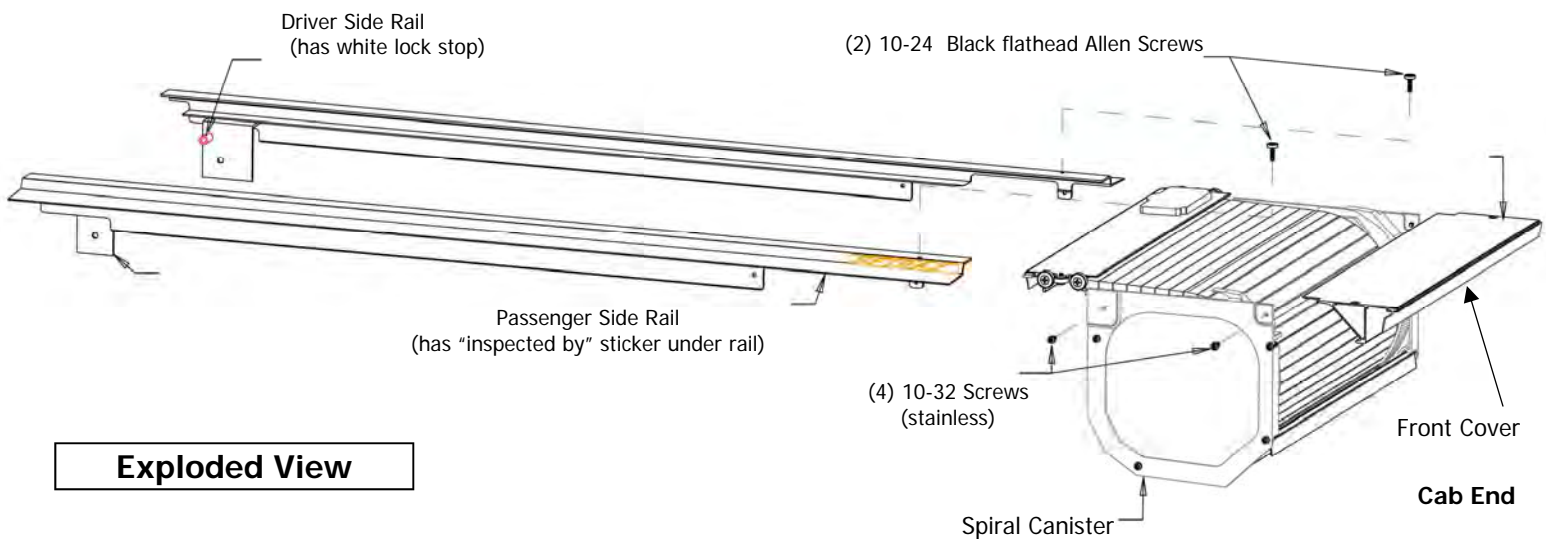
## #1050 - Honda Ridgeline

Installation Instructions

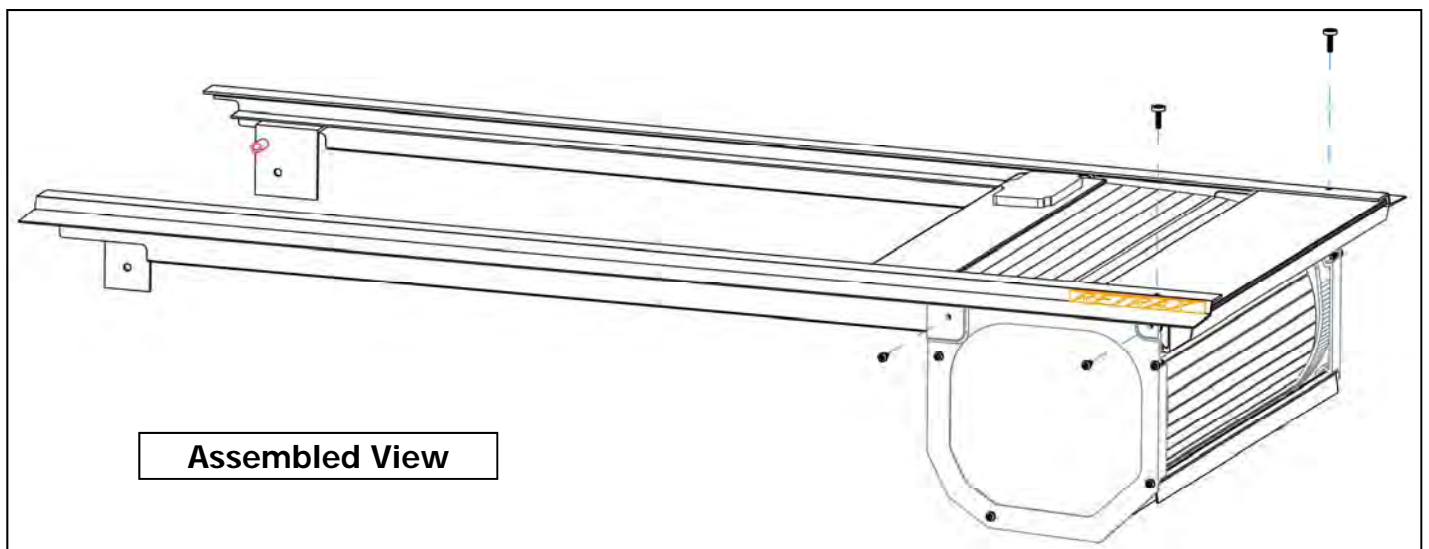
### Owner's Manual



**Please save Instructions:  
Important Warranty and Maintenance  
information enclosed**



**Exploded View**



Manufactured in the USA by  
**APPLIED PRODUCTS, INC.**  
An Employee Owned Company  
917 South 46th Street  
Grand Forks, ND 58201  
(701) 746-5596 FAX (701) 746-5598  
[www.rolltopcover.com](http://www.rolltopcover.com)  
[retrax@retrax.com](mailto:retrax@retrax.com)  
800-206-4070

Scan here to view a brief video  
on how to install a  
RETRAX cover.

Make sure that you have a  
QR Code reader application  
installed on your smartphone.



# RETRAX<sup>ONE</sup>™ ASSEMBLY AND INSTALLATION INSTRUCTIONS

Thank you for your purchase of the **RETRAX<sup>TM</sup>** bed cover system. Please read and follow instructions before un-boxing and assembling the bed cover. The **RETRAX<sup>TM</sup>** bed cover is shipped in two boxes. Check for shipping damage and keep boxes and packing until installation is complete.

If you have any questions or concerns please contact Customer Service@  
Voice: 1-800-206-4070 Fax: 1-701-746-5598 or E-mail: [retrax@retrax.com](mailto:retrax@retrax.com)

Remove foam wrapping carefully from parts to prevent scratching. Leave clear plastic protective film on the rolling cover and aluminum canister until installation is complete. **Remove protective film before exposing to sunlight.**

## Parts checklist for large box

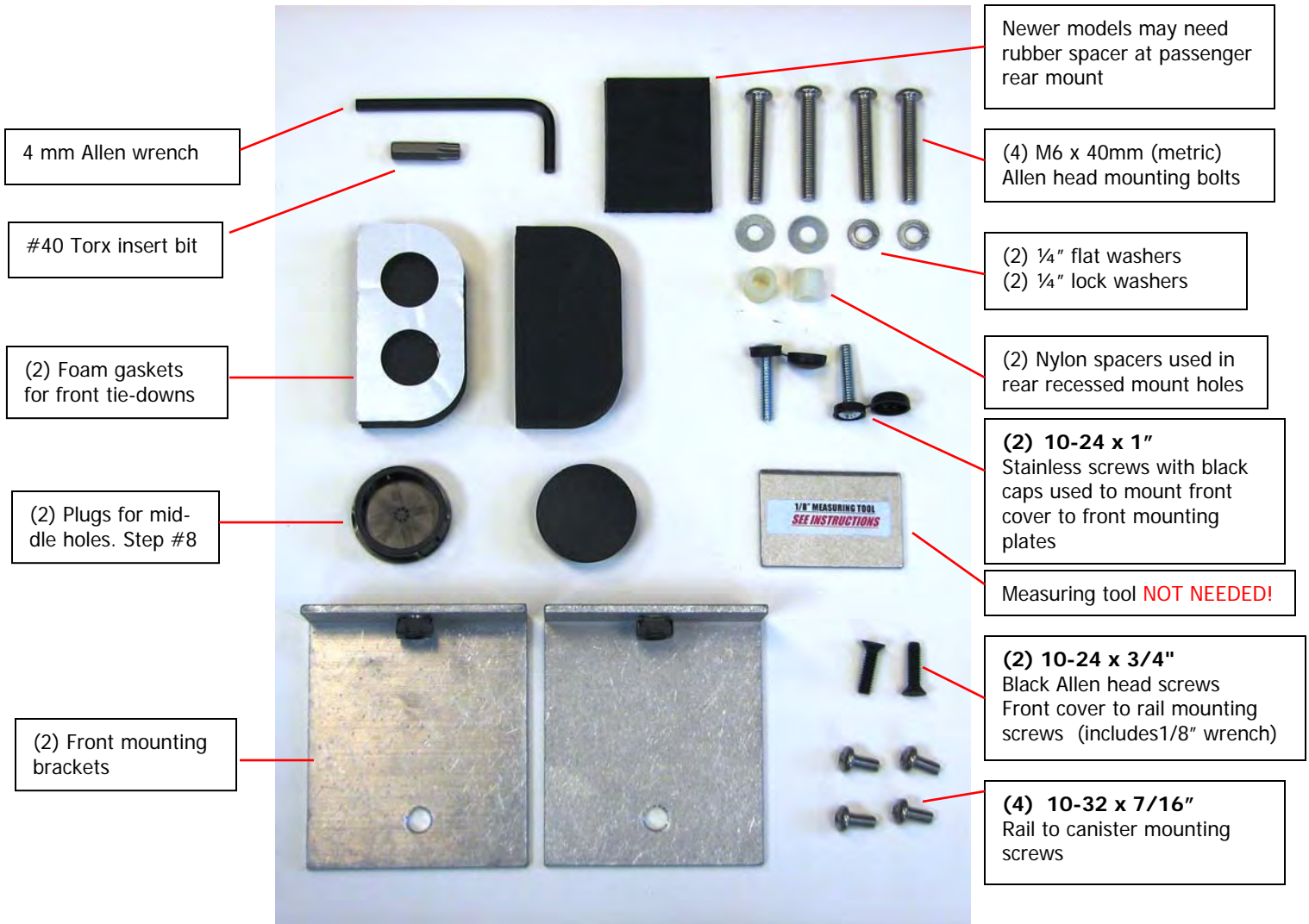
- Owner's packet with keys ----Cover rolled into canister-spiral assembly -- Front cover for canister ---Drain Tube Kit

## Parts checklist for rail box

- Driver's side rail---Passenger side rail---Mounting hardware box

**DO NOT USE LOCTITE!  
USE OF LOCTITE  
VOIDS WARRANTY**

Drain tube kit (not shown)  
(2) Clear tubes w/ drain fittings  
(2) Foam washers



## Pre-assembly guidelines

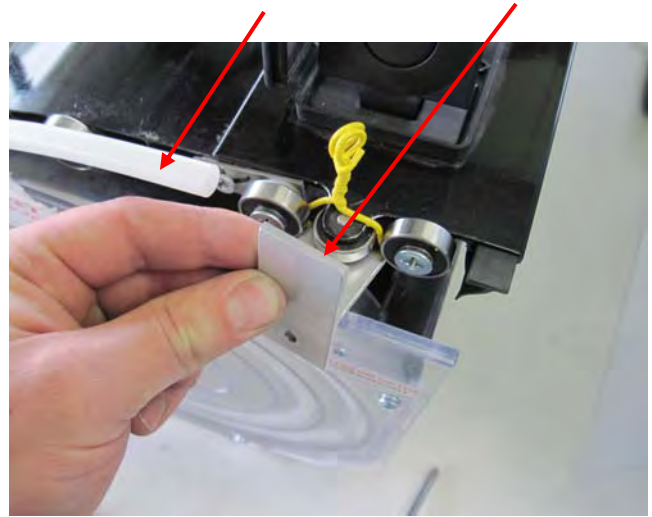
- Two people are recommended for installation and you should allow 1 to 1 1/2 hours to complete.
- Floor space about the size of pickup box is needed for assembly of the bed cover and rails.
- (2) 1/2" drain tubes connect to the bottom of canister and can exit out the floor or front of the pickup bed. The front floor of the Honda Ridgeline has two plugs covering the bed mounting bolts. Drill a loose 1/2" or a 9/16" hole through these plugs for the drain tubes. See Step 15 (Water will drain around those bolts.)

# RETRAX ONE ASSEMBLY AND INSTALLATION INSTRUCTIONS

## STEP 1 Remove the shipping bracket and yellow wire. Completely remove white shipping tubes.

Shipping tube Shipping bracket  
**Remove these items only!**

The shipping brackets can be disassembled simply by removal of the 10-32 screws fastened to each side of the canister (Remove these items only). The tail-gate can then be lifted away from the canister allowing for the removal of the shipping bracket by sliding the T-channel out from the wire ties. The wire ties can then be removed from the bearings without the need for cutting the wire. Pull white shipping tubes completely out of the canister.



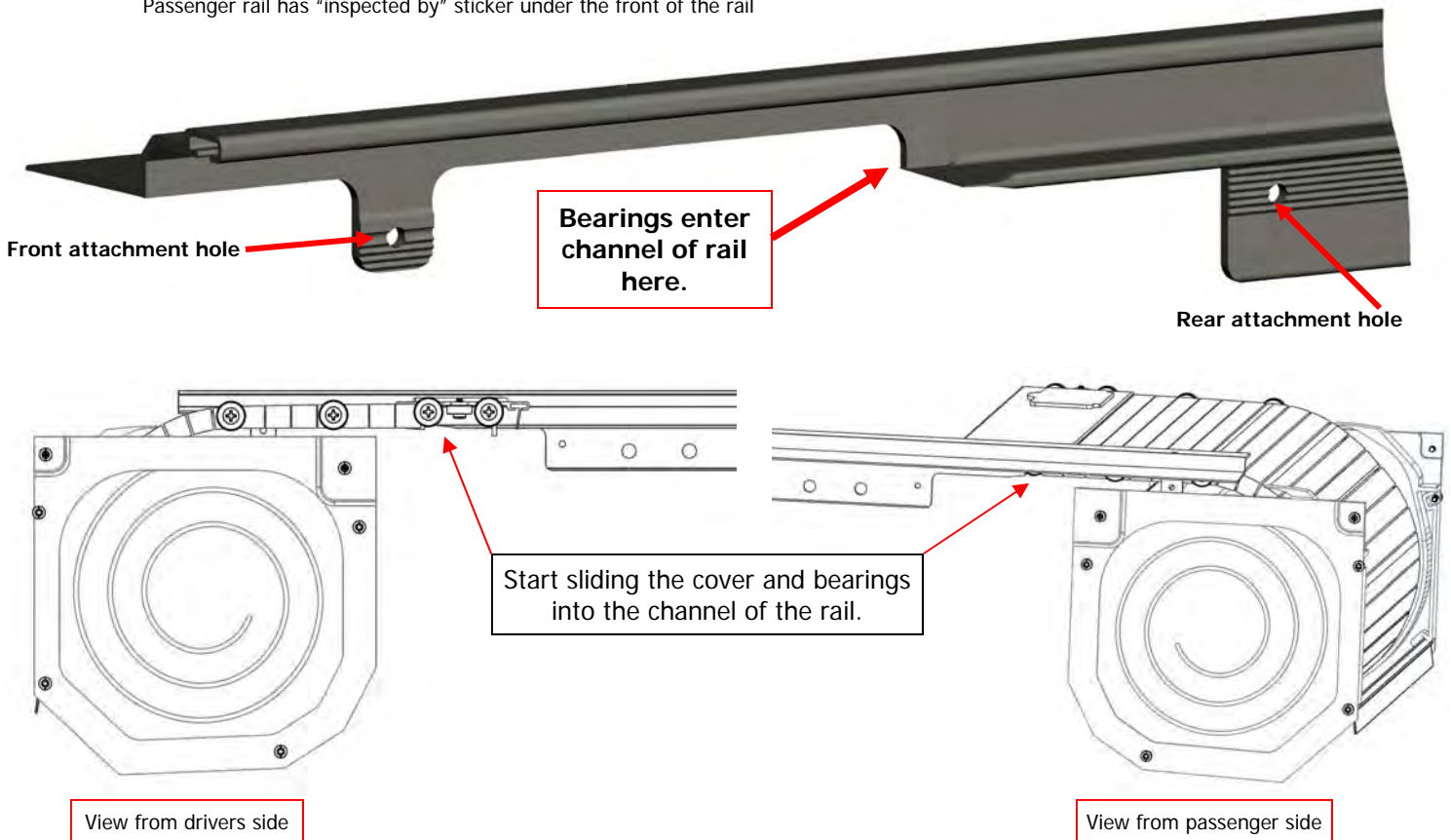
Driver side view of assembly

**DO NOT ALLOW THE COVER TO ROLL INTO THE SPIRAL BECAUSE THE BOTTOM OF THE LOCK CAN DAMAGE THE COVER!**

The rails will be attached to the cover assembly next. The front (cab) ends of the rails have the RETRAX decal attached. The passenger rail is the first to be installed, it has an "inspected by" decal under the front. The **driver's** rail has a white nylon lock stop attached to the bracket at the rear (tailgate) end of the rail.

## STEP 2 Install the passenger rail to the spiral.

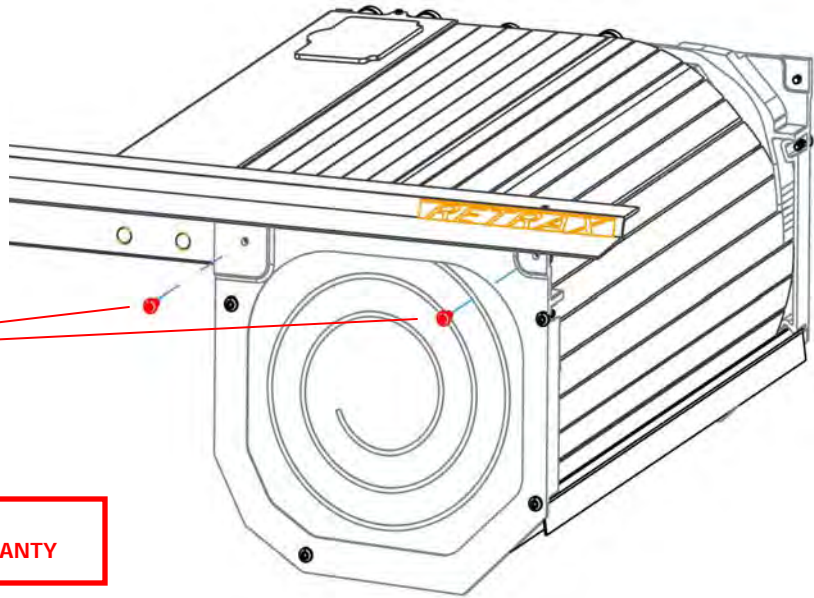
Passenger rail has "inspected by" sticker under the front of the rail





## STEP 2 continued.

Slide the rail over the cover until the two threaded holes in the rail are lined up **behind** the two holes in the spiral. Attach using two of the **10-32 by 7/16" screws**. **Tighten** using a manual #2 Phillips screwdriver.

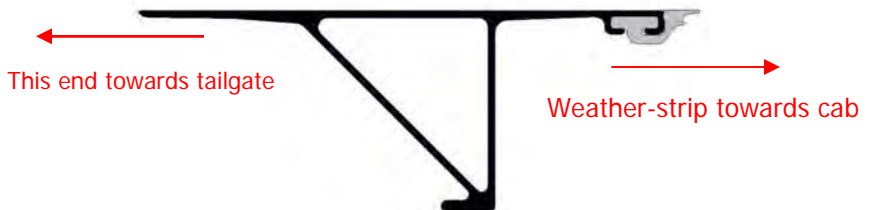


**DO NOT USE LOCTITE!**  
USE OF LOCTITE VOIDS WARRANTY

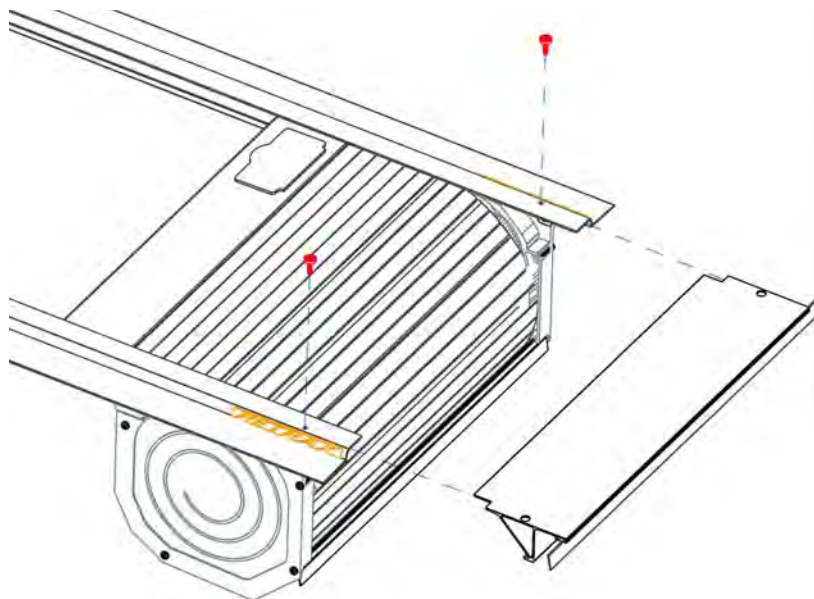
**STEP 3 Install the drivers rail.** Lift up the lock cover and open lock by pressing release button. Pull the cover out of the canister 6"-8" (**See PowertraxONE Installation Supplement on how to move electric cover**). **Caution: Be careful- the locking pin is sharp. DO NOT** allow cover to roll back into canister until rail is installed. Repeat to install the driver's rail.

## SIDE VIEW OF FRONT COVER

**STEP 4 Install the front cover.** The front cover is attached below the rails. Hold the front cover level and push both ends in evenly to help slide it into place. When the holes are lined up, start threading the (2) **10-24 x 3/4" Allen head screws**. Tighten the 2 screws securely using the 1/8" Allen wrench. (included)



**A latch is found on a Manual cover only. See PowertraxONE Installation Supplement on how to move electric cover.**



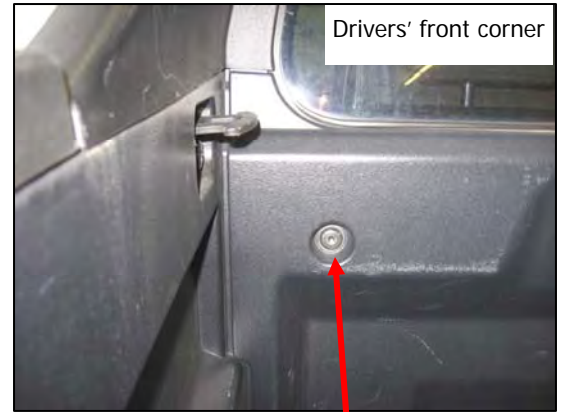
# RETRAX ONE™ ASSEMBLY AND INSTALLATION INSTRUCTIONS

**STEP 5 Attach front seal to rail.** After the front cover is installed, remove the adhesive backing paper from under the front of both rails. (Fig. 5a) Push the front seal firmly into place over the adhesive keeping the seal even. (Fig. 5b)

Fig. 5a Bottom view passenger side



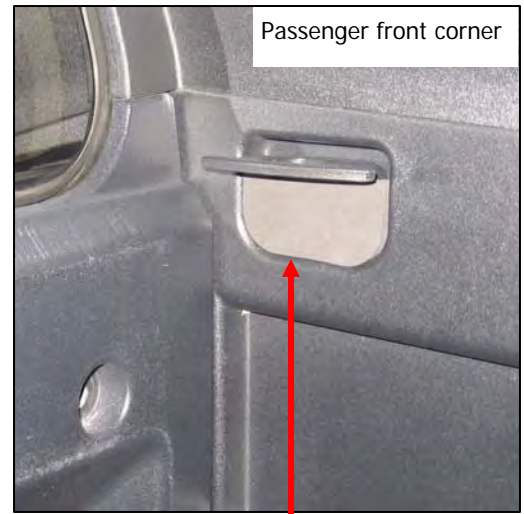
Fig. 5b Bottom view of rail and front cover with front seal installed



**STEP 6** Remove the factory bolts from both corners of the front wall of the bed. Use #40 Torx bit. (included)



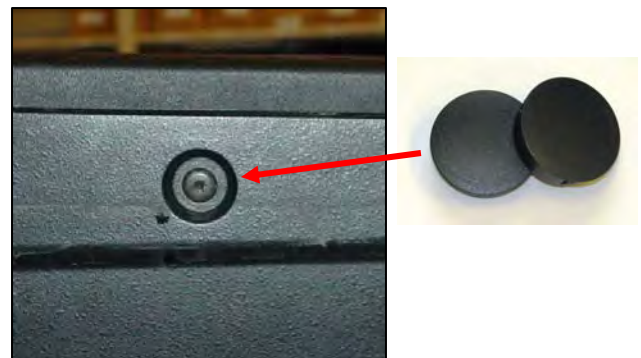
**STEP 7** Remove factory screws and spacers from both rear posts using #40 Torx bit. Drivers' rear corner is shown.



**STEP 8** Remove the adhesive backing paper from the foam fillers for the tie-downs. Push into place over the tie-down bolts. Repeat on drivers side.



**STEP 9** Install front mount brackets as shown. Slide lock washer onto M6 x 40mm bolt, push bolt through hole in mount bracket and start threading into front holes in the bed. **Hold mount bracket level** and tighten using the 4 mm Allen wrench. (included) Repeat on passenger side.



**STEP 10** Insert black plastic plugs into middle holes. Push the 2 supplied plugs into the 2 middle factory holes on both sides of the bed.



# RETRAX ONE™ ASSEMBLY AND INSTALLATION INSTRUCTIONS

**STEP 11 Lift bed cover into place** Using two people lift the bed cover at the front and 2 ft back and position into bed above the RETRAX front mount brackets. The bed cover goes below the factory tie-downs. Slide the cover against the front wall. **Fig. 11a**

**STEP 11b** The weather-strip on the front cover may need to be repositioned. **Fig. 11b**

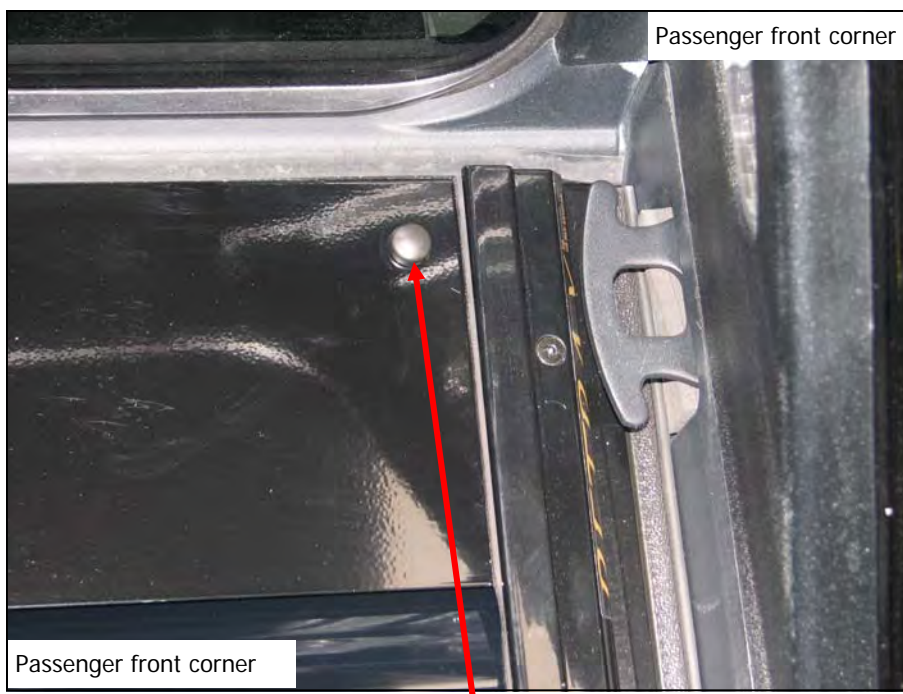
**STEP 12** The holes in the front cover should line up over the threaded holes in the front mount brackets. If needed, lift up slightly on the canister and push the bed cover firmly against the front wall of the bed. Start the (2) 10/24 x 1" front mounting screws with black caps into the brackets but **do not tighten yet**. **Fig. 12**



**Fig. 11a** Lift cover into place over front mount brackets.



**Fig. 11b** Position front covers weather-strip.



**Fig. 12** Start threading the 2 front mounting screws w/black caps through the front cover into the front mount brackets. Do not tighten yet. When all 4 mounting screws are started then tighten front screws using a #2 Phillips screwdriver. Fasten screw cover when finished.

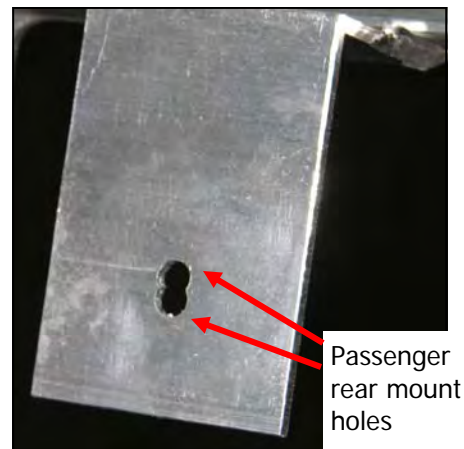
# RETRAXONE™ ASSEMBLY AND INSTALLATION INSTRUCTIONS

## Step 13 Start rear mounting screws

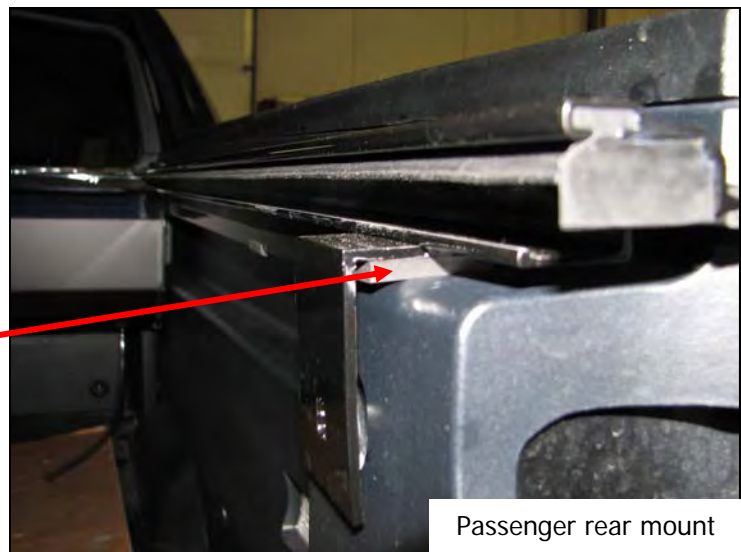
Slide a flat washer onto the (2) M6 x 40mm (metric) rear mount bolts, insert bolts through holes in rear rail brackets, then insert nylon spacer and start threading into factory holes at rear. Use 4mm Allen wrench. See Step 13a and 13b for passenger rear mount. **Tighten all 4 mounting screws securely** after all 4 screws have been started.



**Step 13a** Select proper mounting hole location on passenger rear mount plate. The hole used depends on if the rubber spacer is needed (see below). Most 2008 and older beds use the upper holes without the spacer. During the 2008 model year the passenger side of the Honda tailgate was raised slightly. The late 2008 and newer models use the lower hole and the rubber spacer. This is needed for clearance over the tailgate.



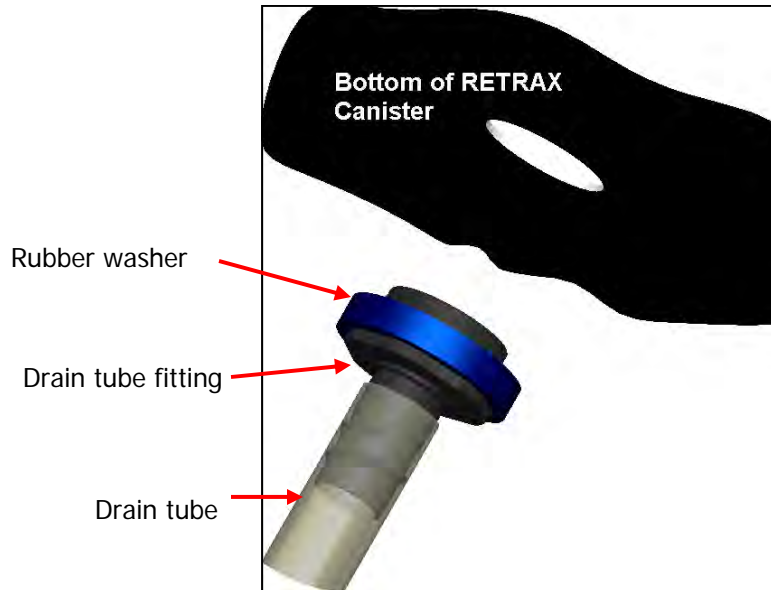
Peel off adhesive strip from rubber spacer and attach spacer underneath mount bracket as shown.



**Step 13a** The rubber spacer provided can be added underneath passenger rear mount bracket for proper clearance over factory tailgate protector.

**STEP 14 Drain Tube**

**Assembly** Remove plastic film from the canister. Place the rubber washers over the drain tube fittings. Push the assembled tubes into the 2 holes on the bottom of the canister. The fitting should lock into place; test by pulling down on the fitting, it should not pull out of canister.



**STEP 15 Install drain tubes and cut to fit.**

You can pass the tubes through the 2 factory plastic bed bolt covers. **Fig. 15a** Remove the covers and drill a loose 1/2" hole or a 9/16" hole for the tubes. Offset the holes as shown.

**Fig. 15b**

Water will drain around the factory bolts.



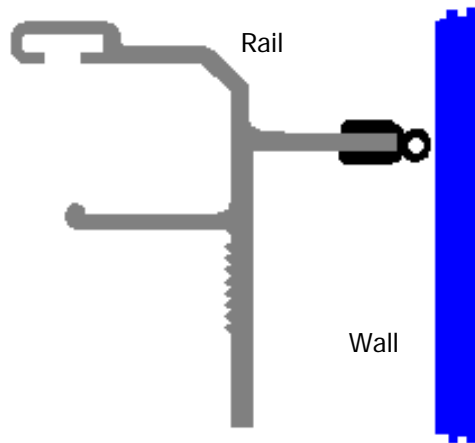
**Fig. 15a** Drivers' front corner – drain tube installed through plastic bed bolt covers.



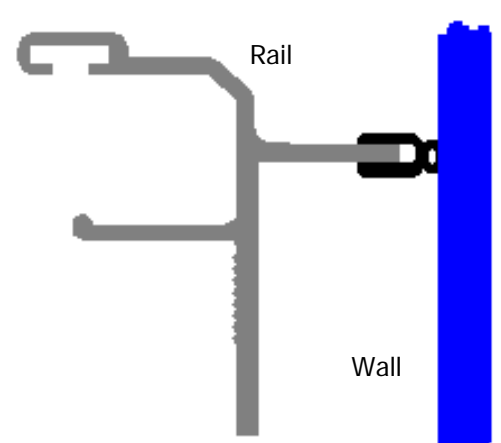
**Fig. 15b** Plastic bed bolt covers (Drilled)

**Optional Rail Weather Strip Adjustment**

The inside walls of the Ridge-line bed have a slight bow outward from front to back. This can cause a slight gap (Fig. a) between the rail weather strip and the side wall of the bed. The rail weather strip can be moved towards the bed wall if needed. Push (slide) the weather strip firmly against the wall to close the gap. (Fig. b)



**Rearview passenger side rail**  
**Fig. a**



**Rearview passenger side rail**  
**Fig. b**

Please call RETRAX Tech help at **800-206-4070** with any questions or comments. We appreciate your business and any input you may have. Thank you.



# RETRAX<sup>ONE</sup> Maintenance and Use Instructions

## USE

The Retrax cover has superior quality, rail weather-strip seals. These seals help minimize water intrusion into the pickup bed. The initial break-in period for the rail weather-strip is about 48 hours in the fully closed position. Your cover may be slightly harder to open and close during the break-in period.

### Opening and Using the Cover

Using your **RETRAX**™ cover is as simple as opening the lock cover and pressing the button at the center of the latch to pop open the handle (1). If properly installed, the cover should be able to roll open and closed easily with one hand (2). During the break-in period more effort may be needed, but you still should be able to roll the cover open and closed with one hand.



### Closing and Locking the Cover

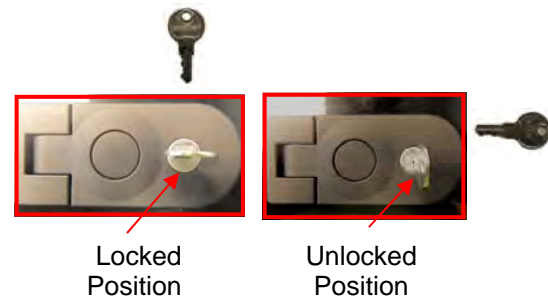
To latch your **RETRAX**™ cover anywhere along the rail, push down firmly on the end of the lock handle using both thumbs (3). It takes this amount of force because it is a friction lock in any open position. The **RETRAX**™ cover is easier to latch in the fully closed position due to a recess in the rail.



The teeth of the **RETRAX**™ keys always face out

### Securing Loose Cargo

**RETRAX**™ covers make transporting loose and large pieces of cargo safe and secure; a unique feature that most tonneau covers cannot claim. To help secure any item too big to fit under the cover, latch the lock handle shut against the item to help keep it in place (4). **CAUTION!** All large and heavy cargo must be secured by straps etc. Applied Products not responsible for shifting cargo.



## MAINTENANCE & CARE

### Cleaning and Caring for Your Cover

Treat your **RETRAX**™ cover like you would treat the hood of your truck. You can wash and wax your cover like you would your pickup, but we don't recommend using any plastic cleaners or protectants (Carnauba wax is fine on your **RETRAX**™ cover). To restore the luster to aluminum parts periodically use a polishing compound followed by a non-abrasive carnauba wax. The weatherstripping on your cover may absorb soapy residue from a car wash, so we recommend wiping down the inside of your rails from time to time (5).

### **Important:**

**NEVER** spray any lubricant or cleaner in the rails. This will void your warranty. The ball bearings are sealed and will not need any sort of lubricant or spray. If the rails do feel a little "sticky", you may rub some paraffin (candle) wax along them until they wear in (6).



Applied Products, Inc.  
917 S. 46<sup>th</sup> Street  
Grand Forks, ND 58201

www.retrax.com • retrax@retrax.com • 800-206-4070

#### **RetraxONE™ and PowertraxONE Warranty Information**

- Never allow any person or animal to be transported in the pickup bed. Under no circumstances should anyone stand, sit or lay on the cover.
- The **Retrax** bed cover is **not waterproof**. Applied Products, Inc. will not be held liable for damage sustained to any cargo being transported in a pickup bed equipped with a **Retrax** bed cover.
- The security features on the **Retrax** bed cover are intended to act only as a deterrent to theft or damage to your cargo. No guarantee is made to the ability of the **Retrax** to protect valuables.

#### **RetraxONE™ and PowertraxONE Limited Lifetime Warranty**

Applied Products, Inc. makes every effort to assure that its products meet high quality and durability standards and warrants to the original retail consumer/purchaser of our products that each product be free from defects in materials and workmanship as follows:

1 year limited warranty for a RetraxONE, and a 3 year warranty to a PowertraxONE or limited life time warranty at a pro-rated price on all Applied Products, Inc. products unless specified otherwise.

This warranty is to the original owner and is non-transferable

Warranty does not apply to defects due directly or indirectly to misuse, abuse, negligence or accidents, acts of god, neglect or failure to operate products in accordance with instructions provided in the owner's information supplied with the product, repairs or alterations outside our facilities or to a lack of maintenance. **APPLIED PRODUCTS, INC. LIMITS ALL IMPLIED WARRANTIES TO THE PERIOD SPECIFIED ABOVE FROM THE DATE THE PRODUCT WAS PURCHASED AT RETAIL. EXCEPT AS STATED HEREIN, ANY IMPLIED WARRANTIES OR MERCHANTABILITY AND FITNESS ARE EXCLUDED. SOME STATES DO NOT ALLOW LIMITATIONS ON HOW LONG THE IMPLIED WARRANTY LASTS, SO THE ABOVE LIMITATION MAY NOT APPLY TO YOU. APPLIED PRODUCTS, INC. SHALL IN NO EVENT BE LIABLE FOR DEATH, INJURIES TO PERSONS OR PROPERTY OR FOR INCIDENTAL, CONTINGENT, INDIRECT, SPECIAL OR CONSEQUENTIAL LOSS, DAMAGE, OR EXPENSE THAT MAY RESULT FROM ANY DEFECT, FAILURE, MALFUNCTION, OR USE OF OUR PRODUCTS. SOME STATES DO NOT ALLOW THE EXCLUSION OR LIMITATION OF INCIDENTAL OR CONSEQUENTIAL DAMAGES, SO THE ABOVE LIMITATION MAY NOT APPLY TO YOU. To take advantage of this warranty, the product or part must be returned for examination, postage prepaid, to Applied Products, Inc. Proof of purchase date and an explanation of the complaint must accompany the merchandise. If our inspection discloses a defect, Applied Products, Inc. will either repair or replace the product. Repair or replacement will be scheduled and serviced according to the normal workflow at Applied Products, Inc. and depending on the availability of replacement parts. Applied Products, Inc. will return repaired product or replacement at Applied Products, Inc. expense, but if it is determined there is no defect or that the defect resulted from causes not within the scope of Applied Products, Inc. warranty, then the user may bear the cost of storing and returning the product. This limited warranty gives you specific legal rights and you may also have other rights, which vary from state to state.**

#### **Important Owner Information**

Please read the instructions and owner information carefully before attempting to assemble, install, operate or maintain your **Retrax** bed cover. Here are some helpful hints for keeping your cover looking and working like new.

- Automotive (non-abrasive) wax can be applied to the cover and rails for extra protection against the elements and scratches.
- Secure cargo in your box to prevent shifting of the load and possible damage to the front canister.
- The **Retrax** bed cover should slide open and closed easily. Do not force the cover open or closed. Please call the **RETRAX™ Consumer Hotline (1-800-206-4070)** before attempting any maintenance or repairs.
- Care should be taken when setting any items on the cover. If the cover is dusty or an item is dragged across the cover, scratching or hazing may occur. Treat your **Retrax** bed cover like the hood of your pickup. Do not wipe dust off the cover; it should be washed off.
- With proper care, the polycarbonate cover on your **Retrax** will last for many years. It should be cleaned with mild soap and water. Do not use any strong chemicals or cleaners of any kind. Do not allow gasoline to come in contact with the cover.
- The ball-bearing rollers installed on your **Retrax** are sealed-for-life and no maintenance or lubrication is required.

#### **(Do Not use a lubricant)**

The channel of the rail can be wiped clean, if needed, to remove dust or dirt.

- Every effort has been made to make the **Retrax** weather-tight, however, the **Retrax** is not waterproof. Use extra care to prevent damage to items during severe weather conditions or while entering a car wash. Water may collect on the cover, remove water before opening.
- Do not force your **Retrax** open if ice forms on your bed cover after an ice storm or car wash. You should use your hand to tap around the perimeter of the cover, which should free up the weather-stripping that seals the bed cover along the edges.
- Lock de-icer can be used to free up the key lock. Do not allow de-icer to make contact with the bed cover. Dry graphite can be applied to the lock assembly to help prevent freezing.

# RETRAYONE™



*Rolls Past* The Competition!







***Applied Products, Inc.***

917 S. 46th St.  
Grand Forks, ND 58201  
Tel: 701-746-5596  
Toll Free: 800-206-4070  
Fax: 701-746-5598  
Web: [www.retrax.com](http://www.retrax.com)



**Made in the USA by  
An Employee Owned Company**