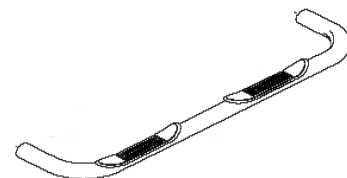




3" Nerf Bar

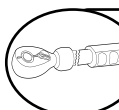
Part No. 1186861101 /3

Fits: **2011-2016****KIA Sportage**

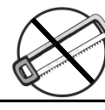
REMOVE CONTENTS FROM BOX. VERIFY ALL PARTS ARE PRESENT.



READ INSTRUCTIONS CAREFULLY BEFORE STARTING INSTALLATION.

DO NOT OVER TORQUE. STANDARD OPERATING LOAD FOR TIGHTEN BODY MOUNT NUTS & BOLTS VARIES FROM **45** TO **65** FOOT POUND.

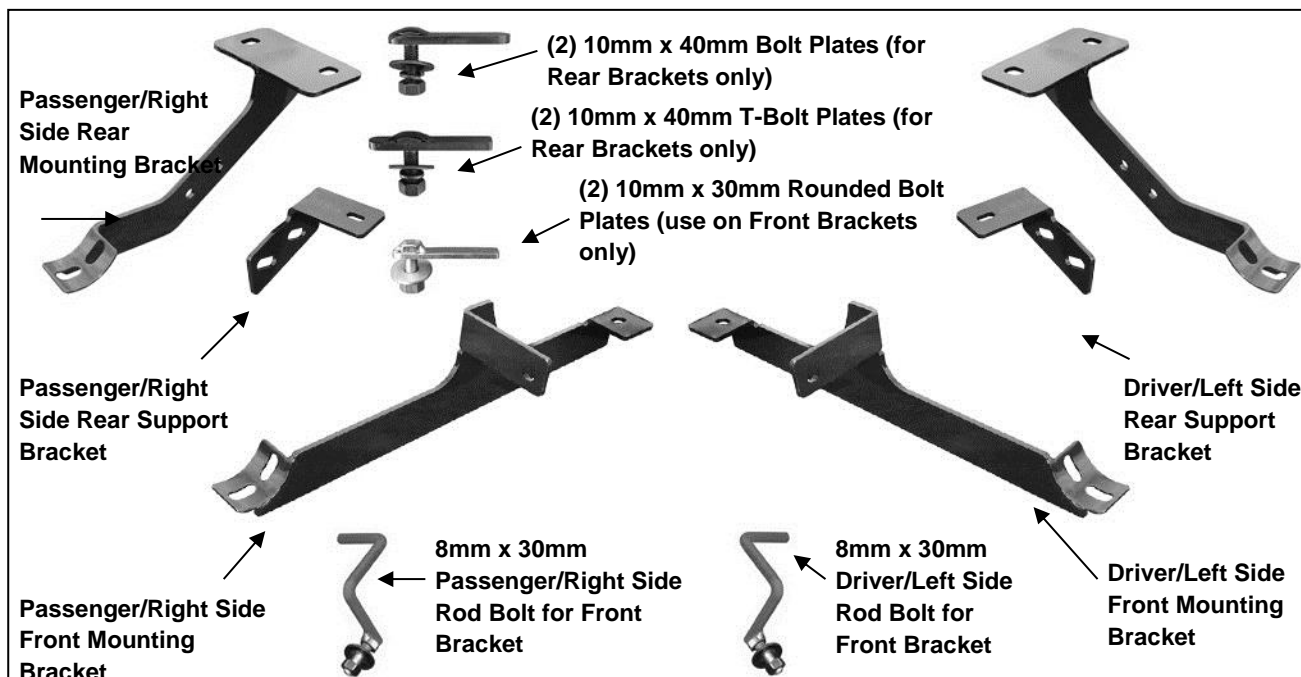
60-180 min

Cutting Not
RequiredDrilling Not
Requiredsupport@trailfx.com

1 866 638 4870

POLISHED STAINLESS STEEL – LIMITED LIFETIME
POWDER COATED BLACK – 3 YEARS**PARTS LIST:**

Qty	Part Description	Qty	Part Description
1	Driver/Left Sidebar	4	10-1.50mm x 30mm Hex Bolts
1	Passenger/Right Sidebar	8	10mm x 30mm OD x 2.5mm Flat Washers
1	Driver/Left Front Mounting Bracket	8	10mm x 20mm OD x 2mm Flat Washers
1	Passenger/Right Front Mounting Bracket	10	10mm Lock Washers
1	Driver/Left Rear Mounting Bracket	10	10mm Hex Nuts
1	Passenger/Right Rear Mounting Bracket	8	8-1.25mm x 25mm Hex Bolts
1	Driver/Left Rear Support Bracket	10	8mm x 24mm OD x 2mm Flat Washers
1	Passenger/Right Rear Support Bracket	10	8mm Lock Washers
2	10-1.50mm x 30mm Rounded Bolt Plates	2	8mm Hex Nuts
2	10-1.50mm x 40mm T-Bolt Plates	2	6-1.0mm x 25mm Hex Bolts
2	10-1.50mm x 40mm Bolt Plates	2	6mm x 18mm OD x 1.6mm Flat Washers
1	8-1.25mm x 30mm Driver Side Rod Bolt	2	6mm Lock Washers
1	8-1.25mm x 30mm Passenger Side Rod Bolt		

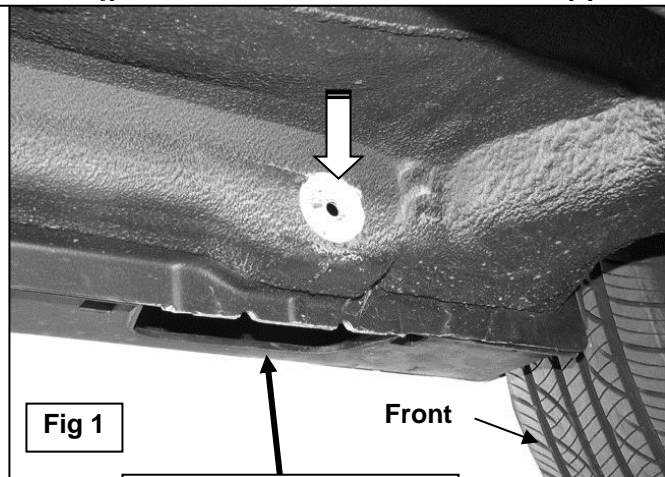


INSTALLATION PROCEDURE:

1. Starting at the front, driver side of the vehicle locates the round hole in the backside of the body panel, **(Figure 1)**. **NOTE:** The hole will be covered by sealing tape and undercoating. Use a small screwdriver to locate and remove the tape.
2. Remove the rubber plug covering the hole in the bottom of the body panel next to the pinch weld, **(Figure 2)**. Insert the driver side 8mm x 30mm Rod Bolt into the large hole in the bottom of the body panel and out the smaller hole in the backside of the body panel identified in Step 2, **(Figure 3)**.
3. Next, locate the oval slot in the bottom of the inner frame channel, **(Figure 4A)**. Insert (1) 10mm x 30mm Rounded Bolt Plate into the frame channel, **(Figure 4B)**. Select the driver side Front Frame Bracket. Hang the bracket from the 8mm Rod Bolt with (1) 8mm Flat Washer, (1) 8mm Lock Washer and (1) 8mm Hex Nut, **(Figure 3)**. Secure the Bracket to the Rounded Bolt Plate with the supplied (1) 10mm x 30mm x 2.5mm Large Flat Washer, (1) 10mm Lock Washer and (1) 10mm Hex Nut, **(Figure 5)**. Snug but do not tighten hardware at this time.
4. Moving toward the rear of the vehicle, remove the factory 6mm hex bolt securing the plastic cover to the floor channel, **(Figure 6)**. Remove the rubber plugs covering the round and oval holes in the floor panel pictured in **Figure 6**. Insert (1) 10mm Bolt Plate into the round opening. Insert (1) 10mm T-Bolt Plate into the oval opening, **(Figure 7)**. **IMPORTANT:** Rotate T-Bolt Plate 90-degrees to the direction of the oval opening.
5. Position the driver side Rear Frame Bracket up to the vehicle and partially attach the Bracket to the (2) Bolt Plates inserted into the body panel. Secure using the included (2) 10mm x 30mm Large OD Flat Washers, (2) 10mm Lock Washers and (2) 10mm Hex Nuts, **(Figure 8)**. Snug but do not tighten hardware at this time.
6. Select the Passenger Side Rear Support Bracket. Hold the Bracket up to the threaded hole in the floor channel and insert the included (1) 6mm x 25mm Hex Bolt with (1) 6mm Lock Washer and (1) 6mm Flat Washer through the plastic cover, the Support Bracket and into the floor channel, **(Figure 9)**. Do not tighten hardware at this time.
7. Line the mounting surface on the Support Bracket with the (2) holes in the Rear Mounting Bracket. Bolt the Support Bracket to the Mounting Bracket with the included (2) 10mm x 30mm Hex Bolts, (4) 10mm x 20mm STD OD Flat Washers, (2) 10mm Lock Washers and (2) 10mm Hex Nuts, **(Figure 10)**. Snug but do not tighten hardware at this time.
8. Carefully position the driver Sidebar up to Mounting Brackets and attach it using the included (4) 8mm x 25mm Hex Bolts, (4) 8mm Flat Washers and (4) 8mm Lock Washers, **(Figure 10)**. Do not tighten hardware at this time.
9. Level and adjust Sidebar properly and tighten all hardware.
10. Repeat steps 2 - 10 for passenger Sidebar installation.
11. Do periodic inspections of the installation to make sure that all hardware is secure and tight.

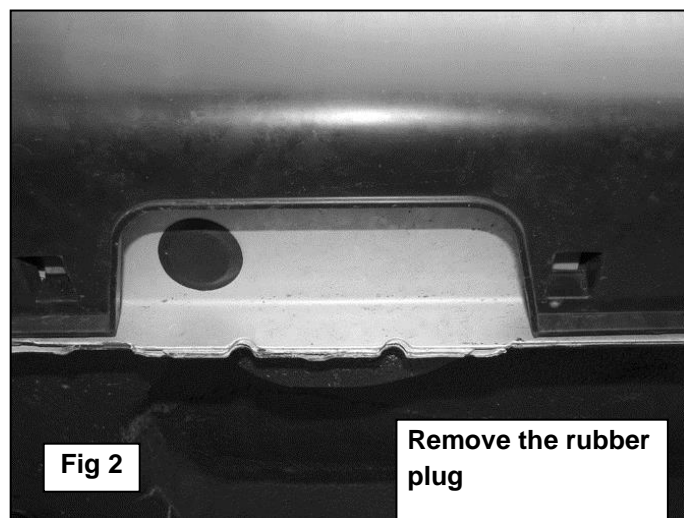
Driver Side Installation Pictured

Use a small screwdriver to remove sealant tape covering small 8mm hole in backside of body panel



Remove the rubber plug

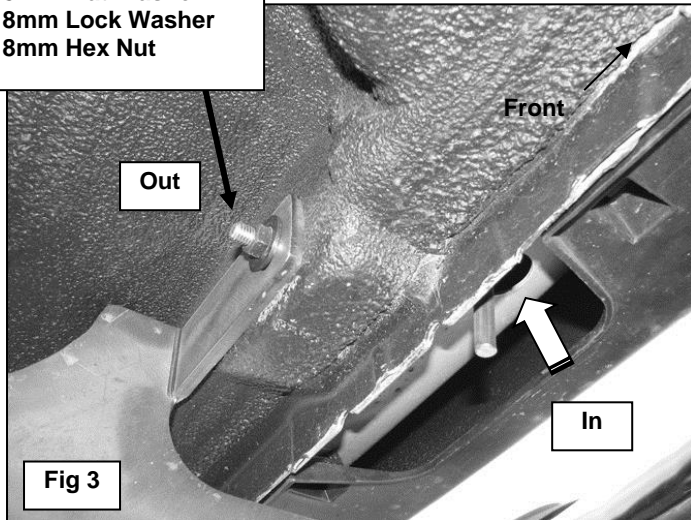
Front



Remove the rubber plug

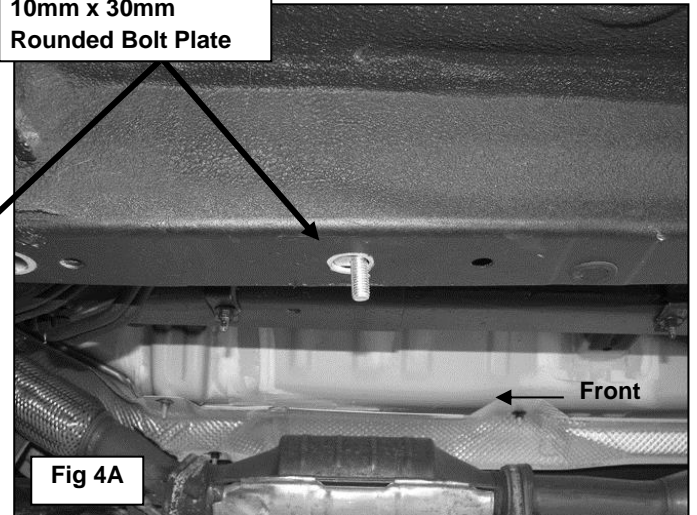
Driver Side Installation Pictured

8mm Rod Bolt
8mm Flat Washer
8mm Lock Washer
8mm Hex Nut



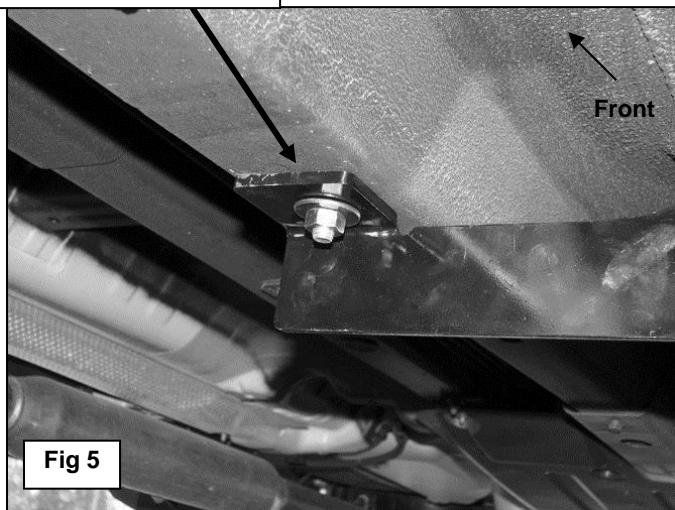
Insert 8mm x 30mm Rod Bolt into large round hole in bottom of body panel and out smaller hole in backside of body panel, (Pictured from below vehicle)

10mm x 30mm
Rounded Bolt Plate

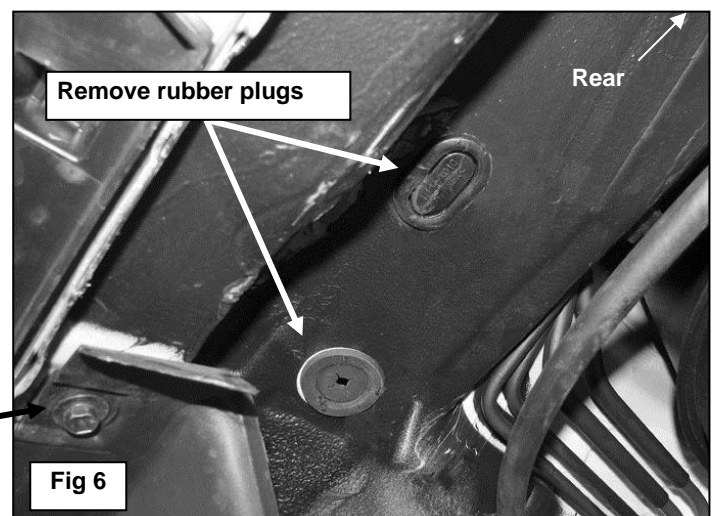


10mm x 30mm
Rounded Bolt Plate
10mm x 30mm Large
OD Flat Washer
10mm Lock Washer
10mm Hex Nut

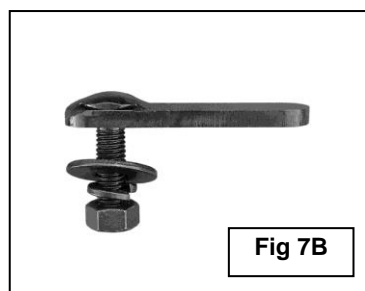
Fig 4B



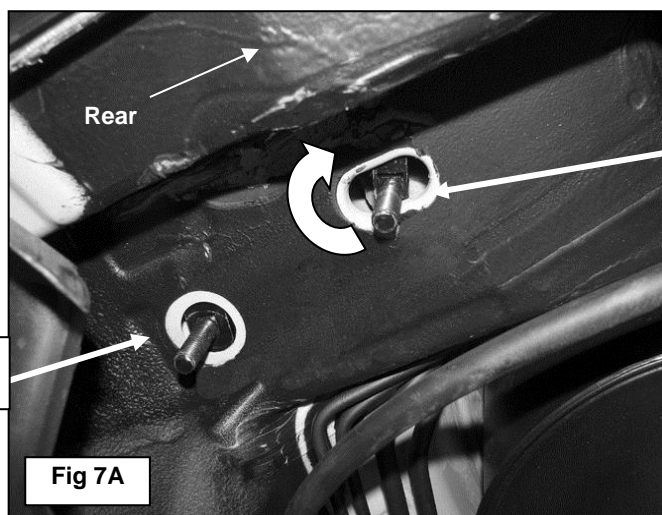
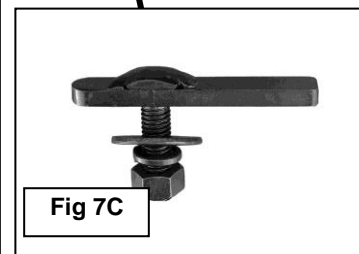
Remove 6mm hex
bolt holding plastic
cover in place



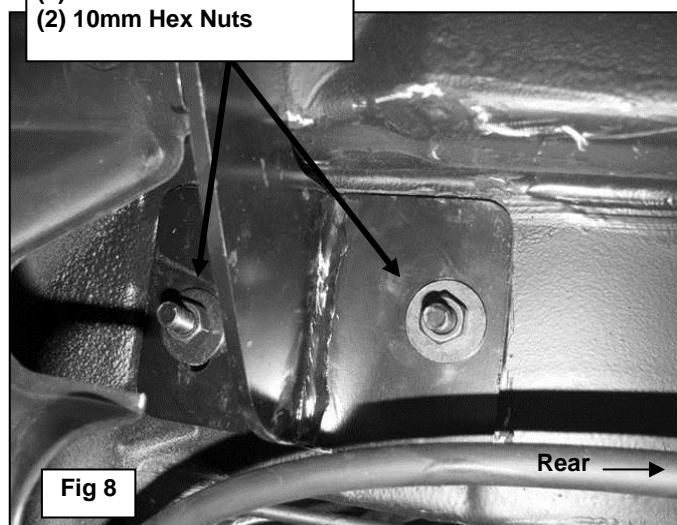
Driver Side Installation Pictured



10mm x 40mm Bolt Plate

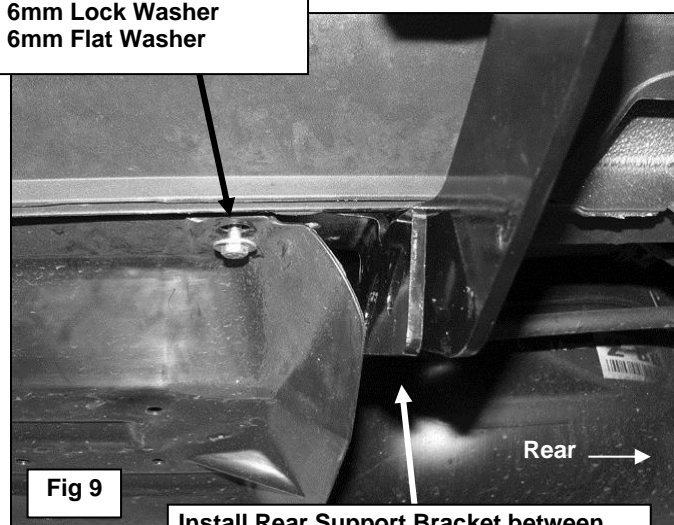
10mm x 40mm T-Bolt Plate
Insert T-Bolt Plate into opening and rotate 90-degrees to direction of slot

- (2) 10mm x 30mm Large OD Flat Washers
- (2) 10mm Lock Washers
- (2) 10mm Hex Nuts



Rear →

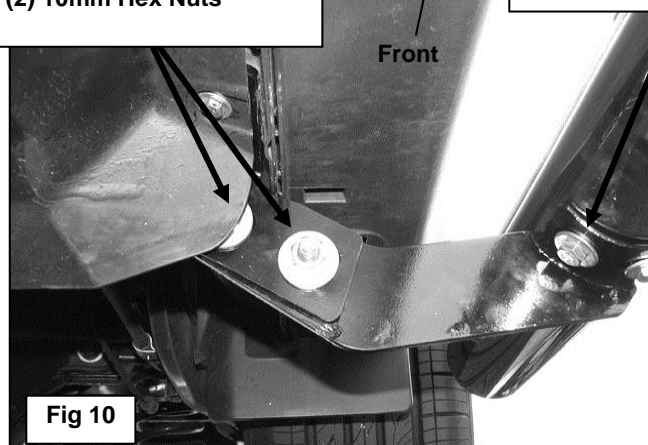
- 6mm x 25mm Hex Bolt
- 6mm Lock Washer
- 6mm Flat Washer



Rear →

Install Rear Support Bracket between plastic cover and frame channel

- (2) 10mm Hex Bolts
- (2) 10mm Lock Washers
- (4) 10mm x 20mm OD STD Flat Washers
- (2) 10mm Hex Nuts



Front →

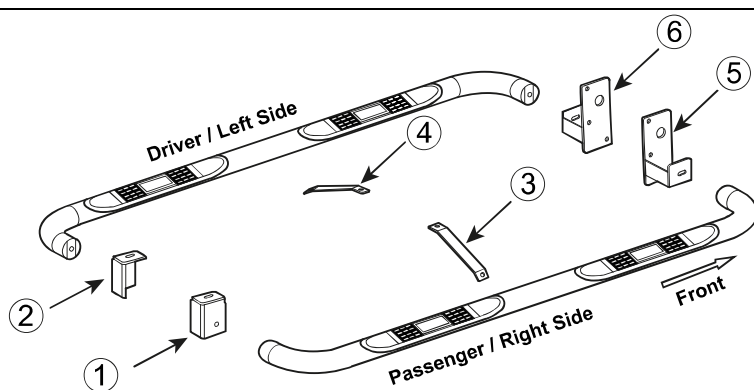
- Sidebar to Bracket:
- (2) 8mm x 25mm Hex Bolts
 - (2) 8mm Lock Washers
 - (2) 8mm Flat Washers



No.	Parts Identification
1	Passenger / Right 'Rear' Bracket marked "PR"
2	Driver / Left 'Rear' Bracket marked "DR"
3	Passenger / Right 'Center' Bracket marked "PC"
4	Driver / Left 'Center' Bracket marked "DC"
5	Passenger / Right 'Front' Bracket marked "PF"
6	Driver / Left 'Front' Bracket marked "DF"

Note:

- This guide is to identify the parts and not a reference for part count.
- For part count, refer Parts List.
- Product / Bracket image is representative and actual design may vary.

**PRODUCT CARE**

- Periodically check the product to ensure all fasteners are tight and components are intact.
- Regular waxing is recommended to protect the finish of the product.
- **Use ONLY Non-Abrasive automotive wax.** Use of any soap, polish or wax that contains an abrasive is detrimental and can scratch the finish leading to corrosion.
- Aluminum polish may be used to polish small scratches and scuffs for **Stainless Steel finish.**
- Mild soap may be used to clean the product for both **Stainless Steel and Black finish.**

FAQ's**1. Hardware's are not of correct size.**

In GMC / Chevrolet truck model 2006 & up, customer needs to reuse the factory body bolts to install the bracket. If your vehicle is not GMC / Chevrolet 2006 & up, ensure that holes are not partially covered with any plastic grommet or rust? If it is, remove the plastic grommet & rust from the thread holes & re-try the installation.

2. Mounting Bracket are not getting Installed properly.

In some cases Illustration images shown in Installation manual may not be the exactly same as per actual vehicle images ,also if Driver / Passenger side mounting brackets are very identical in the design, suggest referring Parts Identification guide to avoid fitment issue.

3. Products are thumping / rattling after installation.

Ensure that all required mounting brackets / hardware's are installed & tighten correctly. Suggest using white lithium / regular grease between the metal to metal contact surfaces.

4. Side Bar is not aligning with vehicle / Step Pads are not aligning with vehicle doors.

Side bar may be interchanged or mounting brackets are not installed at the correct position in the vehicle. Refer Parts identification guide.

5. Missing / Excess Hardware.

Recheck hardware count as per the part list.

6. Product not installing properly.

Ensure make model year, cab length and bed size of your vehicle is listed in the application. All installation steps are followed correctly.

Check out these other TrailFX Products!!

www.TrailFX.com

**BULL BAR****GRILLE GUARDS****BED RAILS****RUNNING BOARDS**

Keystone Automotive Operations Inc. (KAO) warrants this product to be free of defects in material and workmanship at the time of purchase by the original retail consumer. KAO disclaims any other warranties, express or implied, including the warranty of fitness for a particular purpose or an intended use. If the product is found to be defective, KAO may replace or repair the product at our option, when the product is returned prepaid, with proof of purchase. Alteration to, improper installation, or misuse of this product voids the warranty. KAO's liability is limited to repair or replacement of products found to be defective, and specifically excludes liability for any incidental or consequential loss or damage.