

Body Armor 4x4 by Tolar Mfg.
1932 Elise Circle, Corona CA 92879
Ph.: 951-808-0750
Customer service hours:
7am to 4:30pm M-TH 8am to 12:00 Pm
Friday Pacific Time
www.bodyarmor4x4.com



Installation instructions for Ford Super Duty FD-2961 Rear bumper

**** Inspect bumper and all parts prior to installation. Contact us at 951-808-0750 for missing parts.**

Hardware list:

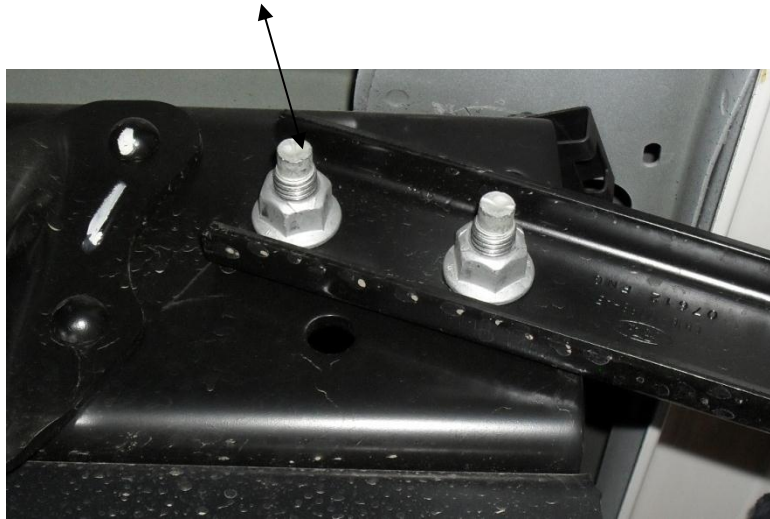
QTY 10 M12X1.75X40mm
QTY 10 M12X1.75 nut
QTY 30 M12 Washer

Removing Factory bumper:

- 1 Disconnect license plate light harness. Remove factory lights and retain for later use.



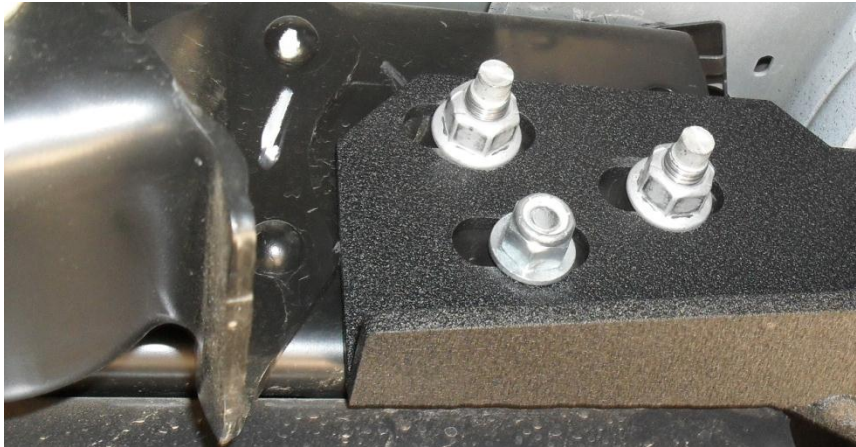
- 2 Remove 4 bolts securing bumper to frame and remove bumper. Retain factory hardware for installation.



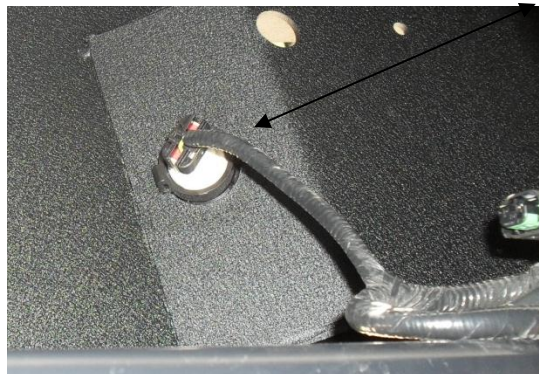
Bumper Installation For FD-2961:

We recommend you have help with lifting of the rear bumper to avoid injury or damage to bumper and vehicle.

- 1 Install bumper using factory and supplied hardware, leave loose at this time.



- 2 Align bumper to body and tighten all hardware at this time.
- 3 Check for clearance when tailgate is open. Reinstall factory license plate lights.



- 4 Install d-rings plate using supplied hardware.



Installation of optional Swing Arm tire Carrier to FD-2961

Grease bearings and bearing races at this time.

- 1 Install races into spindle mount.
- 2 Install large bearing and seal in spindle mount
- 3 Using M12x1.75x40mm bolts, washers and nuts install spindle mount and latch mount to bumper and bumper brackets. Leave loose at this time.



Top



Installation order of bearings in
swing arm barrel

- 4 Install swing arm onto pivot mount and install small bearing, large washer, and castle nut. Tighten castle nut to 50 ft/lbs.
- 5 Install dust cap with cup side up.
- 6 Install cam lock latch to swing arm using four button head screws with washers and tighten.

TC-5293 swing arm shown in image, FD-5293 looks different



Note: the properly adjusted cam lock will close the carrier tight against the stop and can be latched using one hand with 20 to 25 pounds of force.

- 7 Loosely install the tire carrier plate to swing arm.
- 8 Set spare tire on tire carrier plate. With tire tight and square against swing arm leave 3/8" gap between wheel and carrier plate.
- 9 Tighten carrier plate at this time.
- 10 Tighten spare tire lug nuts at this time.

Note: Recheck all hardware after the first couple hundred miles. It is advised to inspect the bumper and hardware periodically.

Do not return this product to the dealer if there is a question or concern about a possible defect, contact us directly and we will make every effort to resolve the issue as quickly as possible. 1-951-808-0750 or kneubauer@tolarmfg.com

**** Body Armor warranty policy: Body Armor 4x4 warrants this product to be free from manufacturer defects for the life of the product. Damage to the product is not considered a defect; abuse of the product is not considered a defect. If fitment issues occur during the installation is not considered to be a defect, call our office to resolve fitment or installation questions. 951-808-0750. Body Armor 4x4 warranty's the paint for 90 days from date of purchase. Rust is not a warrantable defect as we cannot control proper maintenance of the product or environmental variables. We use the highest quality powder coat process as well as an E-Coat undercoating, this allows for the maximum corrosion resistance available. Proper maintenance is required to maintain the long term luster of the paint. Touch rock chips with a quality flat black spray paint or automotive touch up paint.**