

T-REX

Billet Grilles

54717

**07-08 LINCOLN
MKX**

54717

**07-08 LINCOLN
MKX**

UPPER CLASS SERIES GRILLE – 1 PC

Recommended Tools:

5/16" Wrench or Nut Driver
Phillips / Slotted Screwdrivers

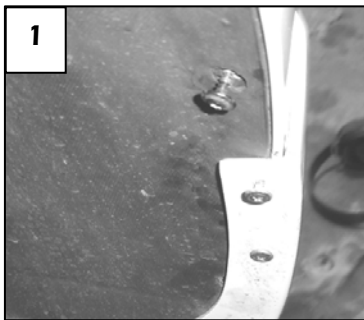
Parts List / Hardware:

1	Grille Inserts	3	10-32 Flat Nut
1	Retaining Nut (3402)	3	1/8" Fender Washer
7	10-32 Nylon Lock Nuts		
3	1/2 x 1/2 L Brackets		
4	Molding Clips (19519)		

Read and understand instructions before attempting installation

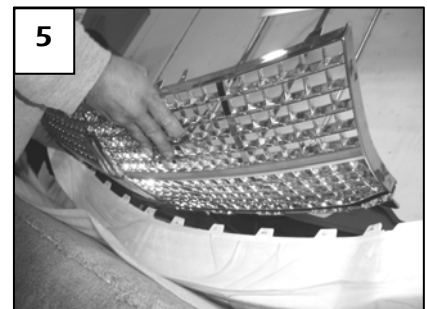
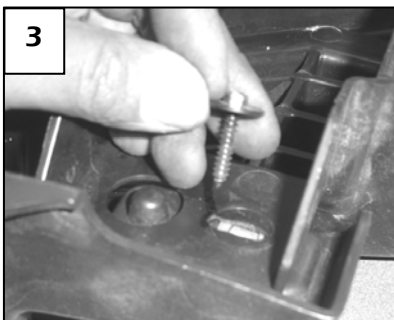
Step 1

To prevent scratching the grille, apply masking tape to the following: Lincoln logo, top two cross bars, center cross bar and lower cross bar of the factory grille. Test fit the mesh inserts over the factory grille; identify the correct locations. Open the hood. Use a screwdriver to unscrew the fasteners; then pull them out. Remove the screws holding the inner fender wells to the bumper (1). Reaching up through the fender well; remove the screw in the upper corner connecting the bumper to the corner of the fender. Remove the bolts on the lower bottom motor cover to allow the bumper cover to release. Where the bumper and fender connect; slightly pull the bumper away from the fender and unclip the bumper (2). Repeat on the other side. Remove the bumper slightly and unclipped the lights. Remove the bumper and set it on a soft surface.



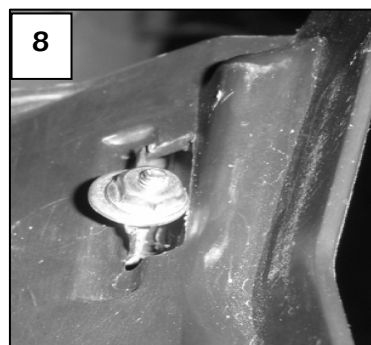
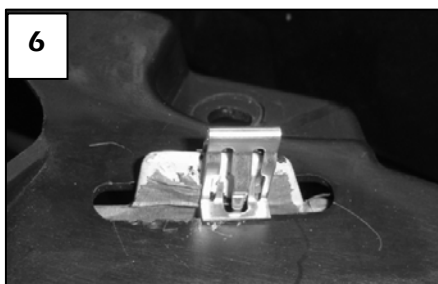
Step 2

On the back of the grille; remove the thread cutting nuts holding the chrome grille to the plastic backing. Remove the screws holding the bottom portion of the grille backing (3). Remove the grille backing and set aside (4). Remove the chrome grille from the painted bumper tabs (5).



Step 3

Place the plastic backing back into stock position. Replace the screws on the lower part of the plastic backing. Place the provided molding clips on the painted tabs **(6)**. Locate the new mesh grille; place the factory Lincoln logo on and secure with the new thread cutting nut. Place a flat nut and fender washer on to each of the grille lower studs. Install new grille to grille shell. On the lower studs place the provided L brackets and nylon lock nuts **(7)**. On the upper studs; place a flat washer and nylon lock nut **(8)**. Adjust the grille and tighten.



Step 5

Re-install the grille assembly back onto the vehicle.

Thank you for purchasing your T-Rex billet grille. 1/15/08