



PRIOR TO INSTALLATION

- Make sure the kit is complete and you have read these instructions thoroughly before beginning installation.

▲ NOTICE Please note that the LED equipped headlight will have to be removed from the vehicle to access the parking light plug. If equipped with LED headlights the harness will be spliced directly to the parking light wire and the supplied wiring adaptor will not be used.

INSTALLATION INSTRUCTIONS

▲ NOTICE THESE INSTRUCTIONS ARE FOR FACTORY GRILLE

PLEASE SEE OTHER INSTRUCTIONS INCLUDED IN THIS SHEET FOR INSTALL IN A ROUGH COUNTRY MESH GRILLE

1. Remove the plastic rivets that secure the radiator. Retain the plastic rivets for reuse. **See Photo 1 & 2.**

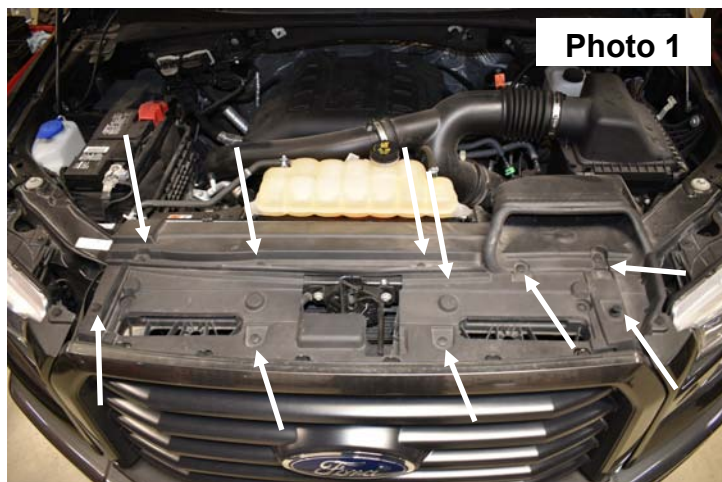


Photo 1



Photo 2

2. Unplug wiring harnesses as shown in **Photo 3.**
3. Remove the retainer securing the shroud to the grille. **See Photo 4.**



Photo 3

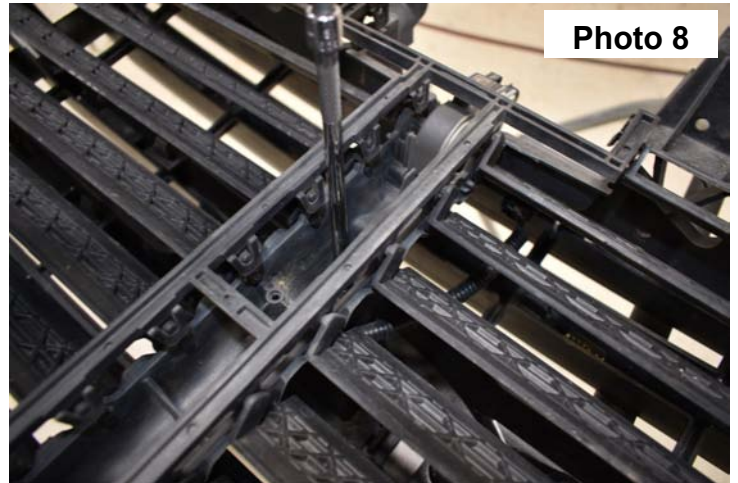


Photo 4

4. Remove the plastic retainer securing the headlight trim. Retain for reuse. **See Photo 5.**
5. Remove the 4 bolts that secure the grille to the core using a 10mm socket. Retain the hardware for reuse. **See Photo 6.**



6. Gently pull the headlight trim piece to disengage the clips and remove the grille bolt as shown using a 8mm socket. **See Photo 7.** Retain hardware for reuse.
7. Remove the grille from the vehicle and remove the center nut using a 10mm socket. **See Photo 8.** Retain the hardware for reuse.



8. Remove the fasteners securing the grille together as shown in **Photo 9.** Retain the fasteners for re-use.
9. Separate the inner and outer grille as shown in **Photo 10.**



10. Install the lights in the bracket with the supplied grommets and place the bracket in the grille as shown in **Photo 11** aligning with the center two grille mounts.

11. Plug the lights into the light harness and hide the wires as shown in the pockets in the grille. **See Photo 12.**



12. Position the inner and outer grille together taking care to keep the bracket aligned with the factory grille mount and reassemble the grille with the factory hardware. The middle plastic tab will need to be drilled. Tighten hardware using a 10mm socket.

13. Drill through the factory plastic only on the center mount as shown using a 7/16" drill bit. **See Photo 13.**

14. Unplug the factory parking light wire from the top of the headlight assembly and plug in supplied extension and plug into the factory harness, Reattach the wire to the head light assembly. **See Photo 13.**



15. Reinstall the grille in the vehicle with the factory hardware. **See Photo 15.**

16. Plug in the lights to the adaptor harness.

17. Plug in the harness detached during disassembly and make sure all the plastic retainers are re-installed. **See Photo 16.**



18. Reinstall the headlight trim with factory hardware and reinstall the upper radiator cover.

INSTALLATION INSTRUCTIONS

▲ NOTICE THESE INSTRUCTIONS ARE FOR INSTALLATION IN A ROUGH COUNTRY MESH GRILL

▲ NOTICE Please note that the LED equipped headlight will have to be removed from the vehicle to access the parking light plug. If equipped with LED headlights the harness will be spliced directly to the parking light wire and the supplied wiring adaptor will not be used.

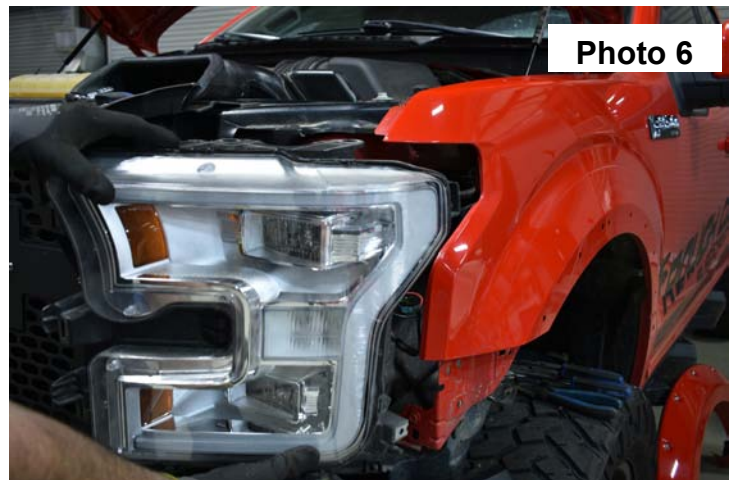
1. Removal of the upper radiator cover is covered in Step 1 in previous instructions.
2. Remove the plastic retainer and pop out the headlight trim, as shown in **Photo 1 & 2** to access the headlight bolts.



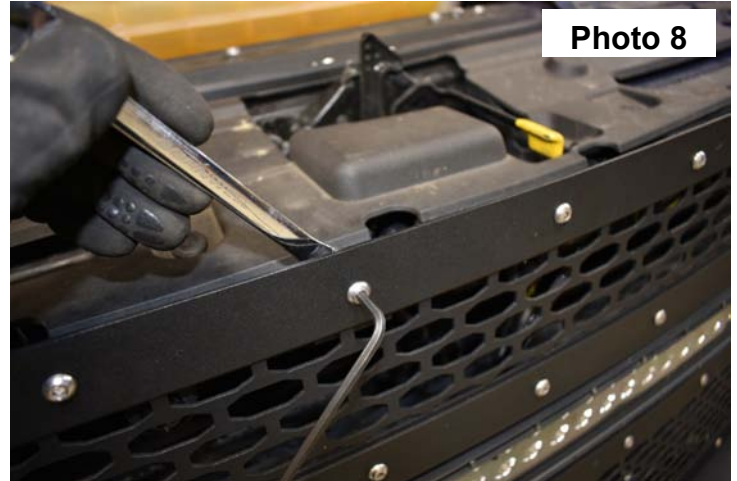
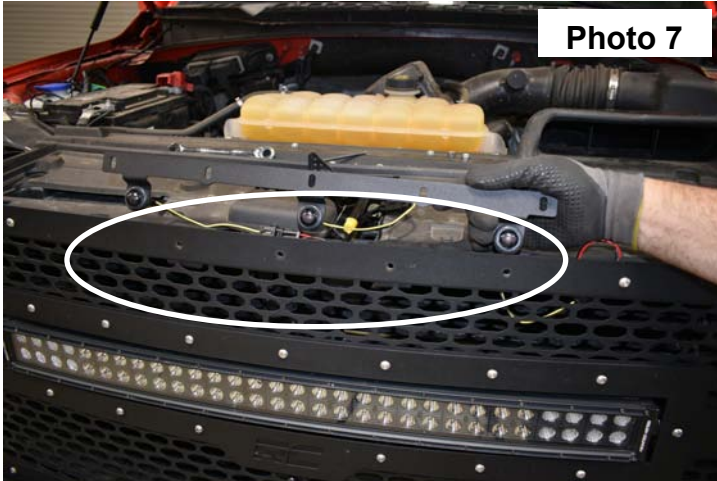
3. Remove bolts securing the headlight using a 10mm socket. Retain the stock hardware. See **Photo 3 & 4**.



4. Remove the lower mount as shown using a 10mm socket. Retain hardware for reuse. **See Photo 5.**
5. Remove the headlight from the vehicle to access the parking light plug. **See Photo 6.**



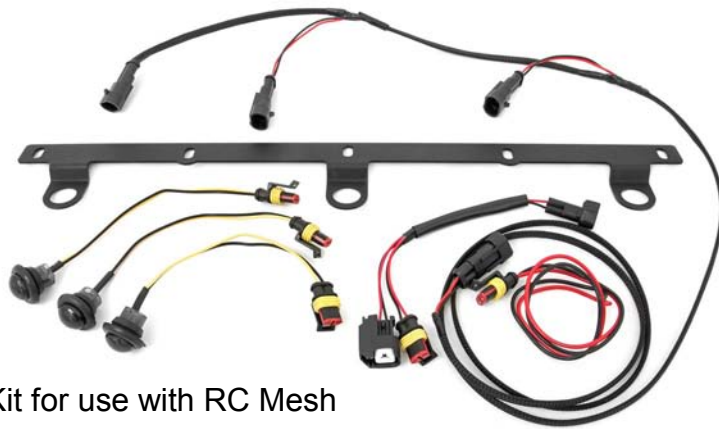
6. Plug supplied adapter harness into the headlight plug on back of headlight assembly, plug the light harness into the adaptor, and the adaptor into the factory harness.
7. Remove the 5 upper bolts on the mesh grille and position the new bracket into position. **See Photo 7.**
8. Reinstall the hardware removed and secure the bracket to the mesh grille. **See Photo 8.** Hide wires accordingly.



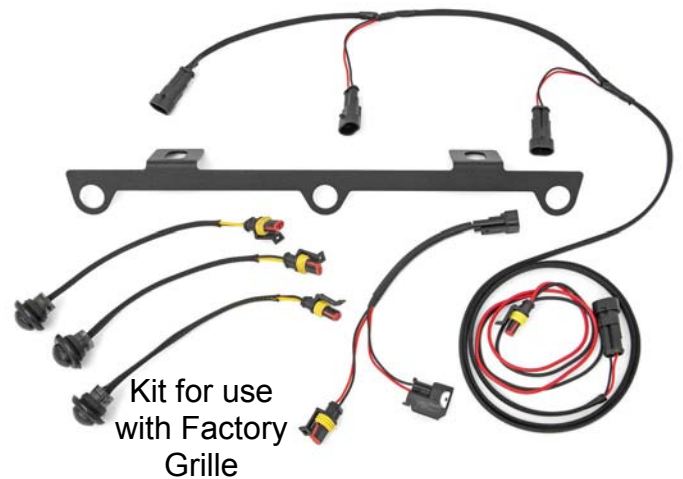
9. Reassemble the headlight assembly using the factory hardware. Tighten using a 10mm socket.
10. Reinstall the headlight trim with factory hardware and reinstall the upper radiator cover.

PRIOR TO INSTALLATION

- Make sure the kit is complete and you have read these instructions thoroughly before beginning installation.



Kit for use with RC Mesh



Kit for use with Factory Grille

Kit Contents:

- 1-Light Bracket
- 3-LED Amber Lights
- 1-Multi Light Harness
- 1-Wiring Adapter

Tools Required:
Flat head screwdriver /pry tool
10mm Socket
8mm Socket
7/16" Drill bit/Drill Motor
7/16" Wrench
5/32" Allen Wrench



By purchasing any item sold by Rough Country, LLC, the buyer expressly warrants that he/she is in compliance with all applicable, State, and Local laws and regulations regarding the purchase, ownership, and use of the item. It shall be the buyers responsibility to comply with all Federal, State and Local laws governing the sales of any items listed, illustrated or sold. The buyer expressly agrees to indemnify and hold harmless Rough Country, LLC for all claims resulting directly or indirectly from the purchase, ownership, or use of the items.

