



INSTALLATION INSTRUCTIONS

2022+ TOYOTA TUNDRA BUMPER LIGHT BAR



PRODUCT INCLUDES:

(2) Lightbar Brackets

PRODUCT FITMENT:

Fits any 20" SR light bar

RECOMMENDED TOOLS:

- Small Flathead Screwdriver or Clip Puller
- 10mm, 14mm, 17mm Socket or Ratchet
- Flush Cut Pliers
- Wire Loom
- Electrical Tape
- Zip Ties
- Tools Required by Light Bar Manufacture for Installation

THANK YOU FOR PURCHASING RIGID INDUSTRIES' PRODUCTS FOR YOUR VEHICLE.

Please read through all of these instructions and tips before proceeding with the installation. We do our best to provide a simple installation process for all applications, however a professional installation is always recommended.

IMPORTANT

Always disconnect any power sources connected to your vehicle before servicing fuses or electrical systems.

DO NOT just try and pull the front panels from the grill, there are wires that need to be move around and there is not access to them without pulling the front clip.

STEP: 1

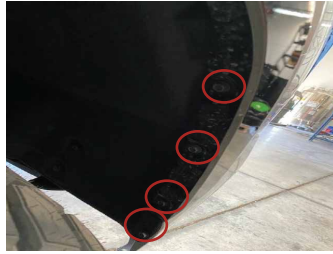
Tape headlight corners this will prevent scratching the headlights upon disassembly and installation of the front clip.



RIGID® INSTALLATION INSTRUCTIONS

STEP: 2

Remove 6 inner fender screws per side all the way up to the one above the centerline of the front wheel. Place the screws in a safe place or bag for reinstallation.



STEP: 3

Unplug the four plugs near the top of the grill.



STEP: 4

Pull the wheel well fenders back about 1/2 way to allow the front clip panels to be removed.

STEP: 5

Pull the outer wings of the front clip back so they are released from the body.

STEP: 6

Pull the plastic pull pin clip from each side that is located under the 4 plugs that were disconnected and place in a safe spot for reinstallation.

STEP: 7

Remove the four bolts at the bottom of the front clip out and place in a safe spot for reinstallation.



STEP: 8

Remove the four bolts at the top of the front clip, these can be placed in the hole in the core support to make it easy to secure the front clip upon re-installation.



STEP: 9

Setup a blanket or soft place to place the front clip grill down in a good spot to work on the wiring on the backside. With the bolt removed and wires unplugged the front clip can now come off the vehicle, having some assistance will be beneficial to make sure the front clip is pulled evenly.

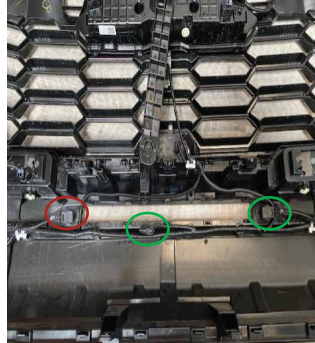
STEP: 10

With the grill on the ground the wires and temperature sensor will need to be moved around in order to make room for the light bar. Using a clip puller, the temperature sensor will need to be pulled by the plastic clip from the grill and moved down into the wiring loom holder. The wires for the collision sensor will also need to be undone from the loom and re-loomed and taped around the light hole opening on the passenger side around the sensor. TRD Pro ONLY: The camera wiring will also need to be removed from the loom and re-loomed but run around the driver's side of the opening for the light bar (Displayed with red circle).

Before: (TRD Pro Grill Displayed)



After: (TRD Pro Grill with Camera Wiring on Driver's Side)



STEP: 11

Loom and tape over the wires that have been re-routed to make the wires have a factory appearance and protection.

STEP: 12

Remove the innermost bumper bolts to install the 20" light bar brackets.

STEP: 13

Loosely install the light bar brackets onto the front bumper mounts. DO NOT tighten these bolts until the light bar is installed and centered.



STEP: 14

Install the light bar to the brackets loosely, each company will have a different mounting method, see the manufacturer's instructions. Make sure light bar wire is above the mounts before fully installing.

STEP: 15

Center the light bar left to right on the front of the vehicle and push the light bar as far back in the slots as possible. Once the light bar is located tighten all the bolts on the bumper and the light bar to manufactures specifications.

STEP: 16

Run the wire from the light bar following the manufacturer's instructions for the wiring kit if included. The battery for TRD Pro and Hybrid vehicles have the battery under the driver's rear seat.



STEP: 17

Optionally on the lower grill trim the vertical and horizontal plastic bars with a set of flush cut pliers and file the excess if there is any before installing the grill. Designated by the red box in the photo. Check the light to make sure it works properly before installing the front clip.



STEP: 18

Spread the long plastic tabs in the middle of the front clip around the hole where the light bar is installed. This will keep the tabs from accidentally getting folded in front of the light bar. With the help of an additional person install the front clip onto the vehicle, use a couple of the bolts at the top to loosely hold it in place.



STEP: 19

Snap the wings of the front clip back into place and snap the wheel well fenders back into place

STEP: 20

Check the alignment of the light bar to make sure it is centered in the hole. Adjust the front clip as necessary.

STEP: 21

Install the 4 bolts at the bottom of the front clip. Center and tighten. Install the 2 pull pin clips back into the top of the front clip. Plug the 4 plugs back into the front clip. Install the remaining top bolts back into the front clip. Center and tighten.

STEP: 22

Install the 6 bolts per side into the wheel well, DO NOT over tighten.

STEP: 23

Remove the tape from the headlights. Give everything a once over and enjoy the new light bar.

Your installation is now complete.
Welcome to the Rigid Nation!

WARRANTY INFORMATION

For warranty information, visit www.rigidindustries.com/about/warranty 779 N Colorado St, Gilbert, AZ 85233 • 855-760-5337
www.rigidindustries.com

RIGID, SR-M Series, and Rigid Industries are registered and/or common law marks owned by JST Performance, LLC, a Delaware limited liability company d/b/a Rigid Industries.

11-14313-A

