



ORACLE LIGHTING

TOYOTA TACOMA MIRRORS

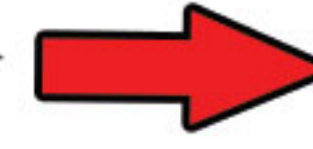
ORACLE PART 5919-001

INSTALLATION GUIDE

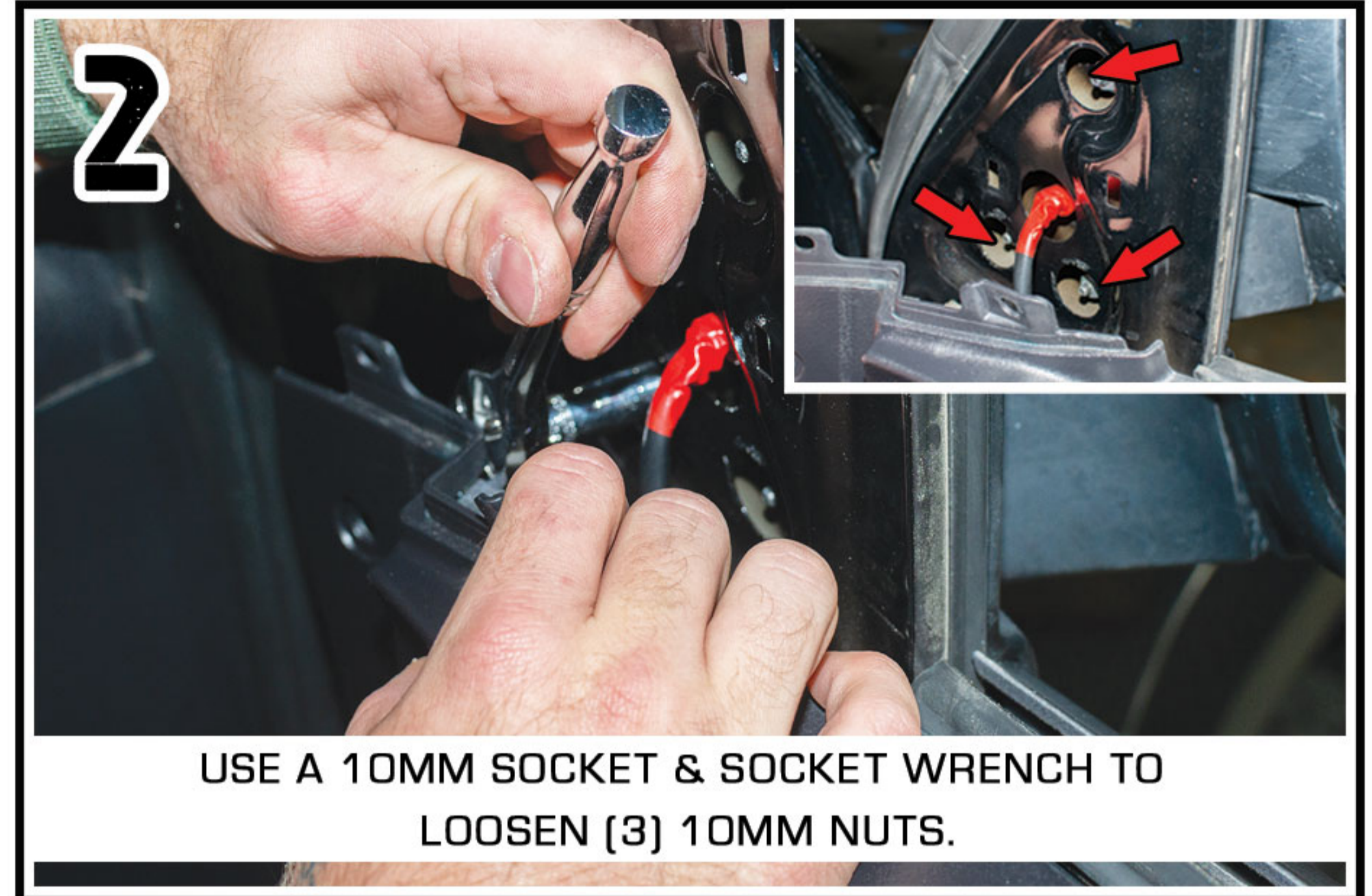
TOOLS NEEDED:

10MM SOCKET
SOCKET WRENCH
PANEL TOOL
PHILLIPS SCREWDRIVER
FLAT-HEAD SCREWDRIVER
ELECTRICAL TAPE

SCAN TO WATCH
INSTALL VIDEO



REMOVE UPPER TRIM PANEL.



USE A 10MM SOCKET & SOCKET WRENCH TO LOOSEN (3) 10MM NUTS.



REACH INSIDE DOOR PANEL TO LOCATE MIRROR CABLE.
DISCONNECT PLUG.



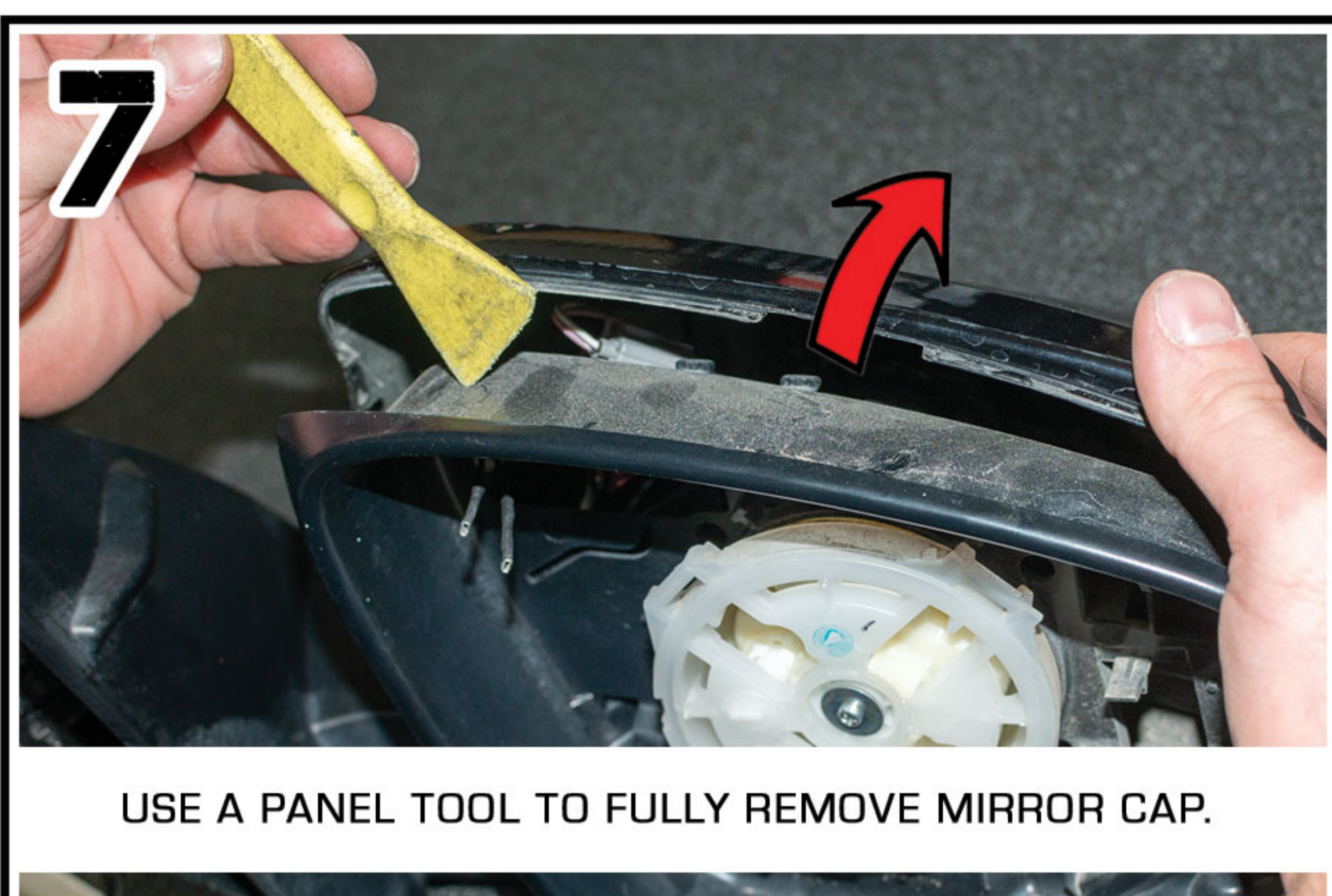
YOU CAN NOW REMOVE YOUR MIRROR ASSEMBLY.



USE A FLAT-HEAD SCREWDRIVER TO REMOVE THE MIRROR GLASS. UNPLUG MIRROR HEATING ELEMENT.



USE A FLAT-HEAD SCREWDRIVER TO DEPRESS THE MIRROR CAP CLIP.



USE A PANEL TOOL TO FULLY REMOVE MIRROR CAP.



REMOVE THE RED TAPE & PULL THE MIRROR CABLE THROUGH THE MIRROR ASSEMBLY.



ORACLE LIGHTING

TOYOTA TACOMA MIRRORS

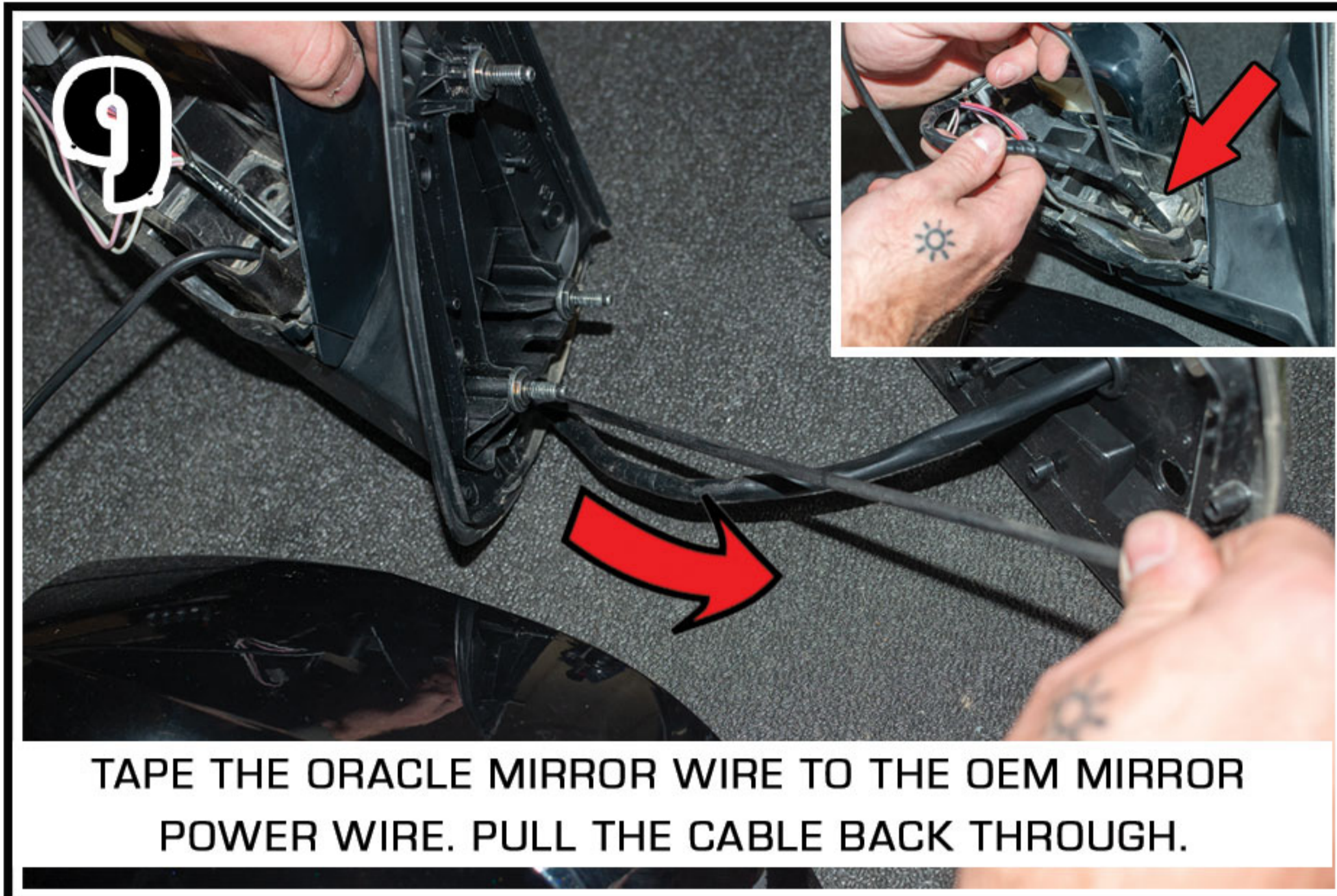
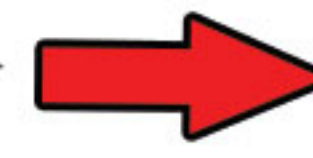
ORACLE PART 5919-001

INSTALLATION GUIDE

TOOLS NEEDED:

10MM SOCKET
SOCKET WRENCH
PANEL TOOL
PHILLIPS SCREWDRIVER
FLAT-HEAD SCREWDRIVER
ELECTRICAL TAPE

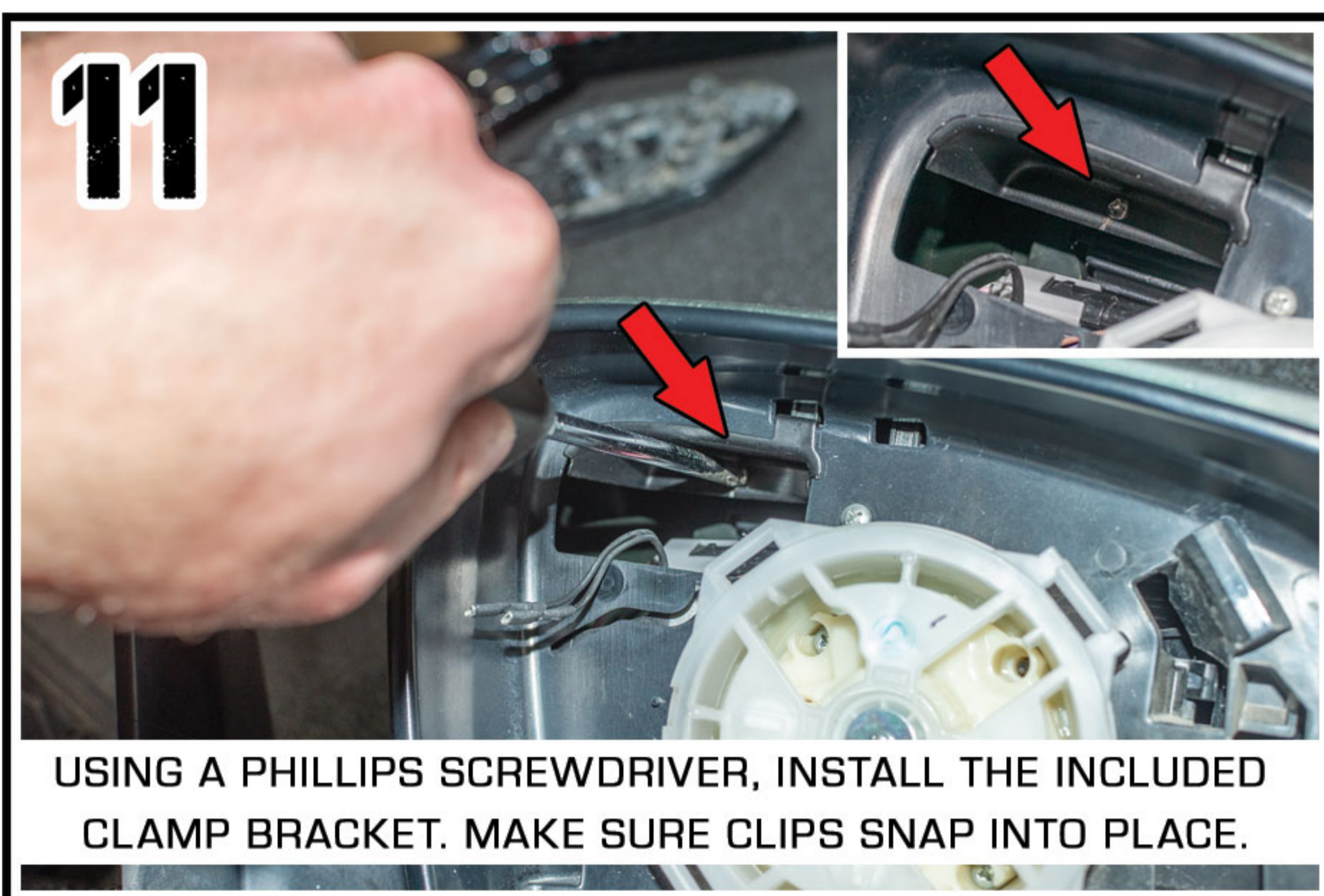
SCAN TO WATCH
INSTALL VIDEO



TAPE THE ORACLE MIRROR WIRE TO THE OEM MIRROR POWER WIRE. PULL THE CABLE BACK THROUGH.



ATTACH THE ORACLE OFF-ROAD MIRROR CAP TO THE MIRROR ASSEMBLY.



USING A PHILLIPS SCREWDRIVER, INSTALL THE INCLUDED CLAMP BRACKET. MAKE SURE CLIPS SNAP INTO PLACE.



RE-INSTALL YOUR MIRROR.
RE-CONNECT YOUR OEM MIRROR PLUG.



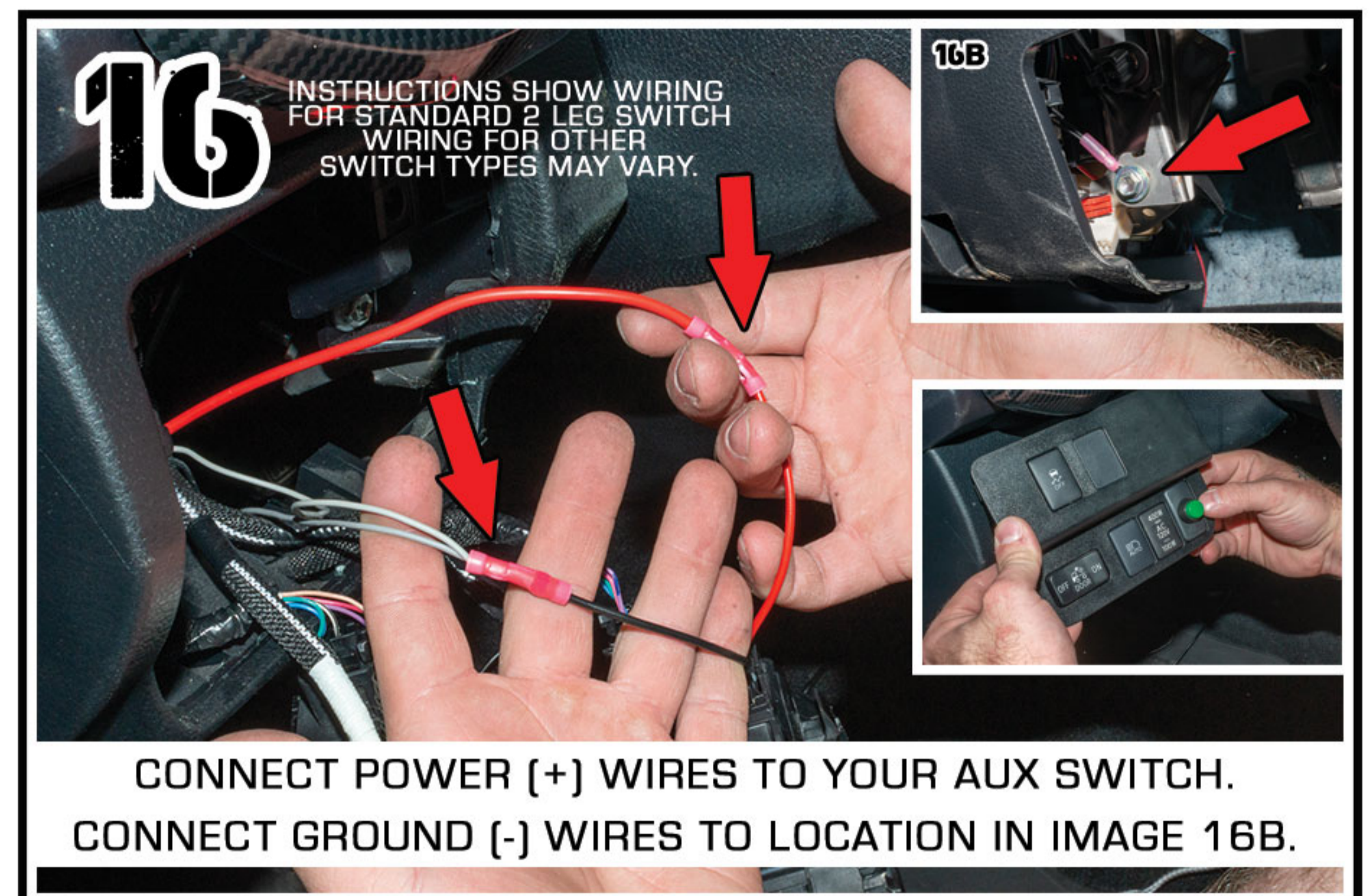
ROUTE THE OFF-ROAD MIRROR CABLE UNDER BOTH DOOR GASKETS.



ROUTE MIRROR CABLE INTO TRUCK CABIN. ROUTE CABLE UNDER INNER DOOR GASKET.



ROUTE MIRROR CABLE TO DRIVER SIDE UNDER DASH BEHIND CENTER CONSOLE.



CONNECT POWER (+) WIRES TO YOUR AUX SWITCH.
CONNECT GROUND (-) WIRES TO LOCATION IN IMAGE 16B.