



ORACLE LIGHTING

F-250/350 SIDE MIRRORS

ORACLE PART #5908-001

INSTALLATION GUIDE

TOOLS NEEDED:
7MM & 10MM SOCKET
FLAT HEAD SCREWDRIVER
WIRE CRIMPS
STRIPPERS
PANEL TOOL

STEP: 1

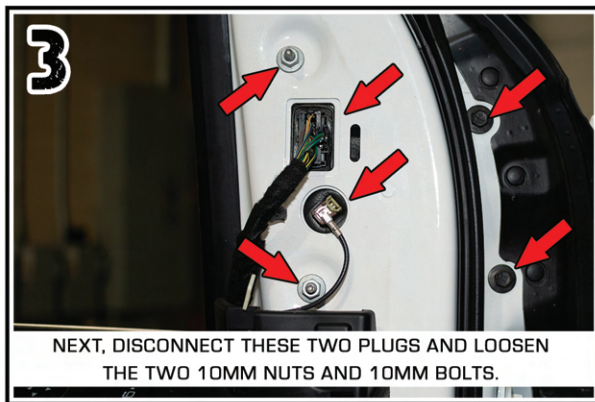
WATCH THE VIDEO
SCAN QR OR VISIT:



WWW.VIMEO.COM/819902580



ON THE INSIDE OF THE DOOR, USE A PANEL TOOL TO REMOVE THIS TRIM PIECE.



NEXT, DISCONNECT THESE TWO PLUGS AND LOOSEN THE TWO 10MM NUTS AND 10MM BOLTS.



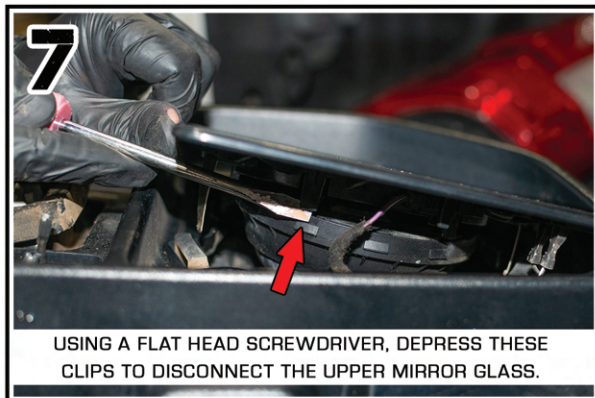
USING A PANEL TOOL, DEPRESS THIS CLIP TO FULLY REMOVE THE MIRROR.



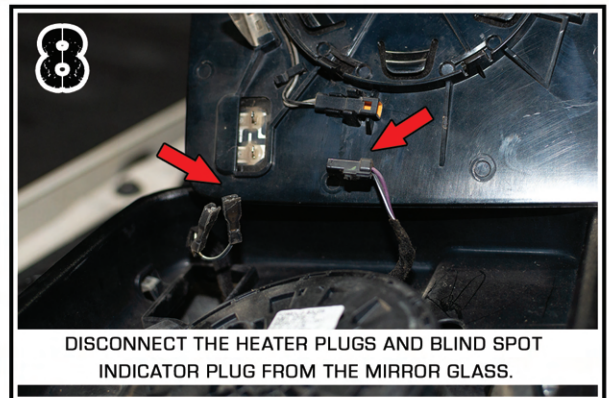
USING A PANEL TOOL, REMOVE THE LOWER MIRROR GLASS BY DEPRESSING THE CLIPS.



DISCONNECT THESE TWO MIRROR HEATER PLUGS FROM THE MIRROR GLASS



USING A FLAT HEAD SCREWDRIVER, DEPRESS THESE CLIPS TO DISCONNECT THE UPPER MIRROR GLASS.



DISCONNECT THE HEATER PLUGS AND BLIND SPOT INDICATOR PLUG FROM THE MIRROR GLASS.



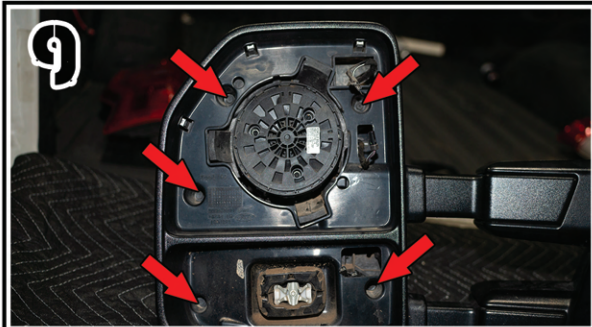
ORACLE LIGHTING

F-250/350 SIDE MIRRORS

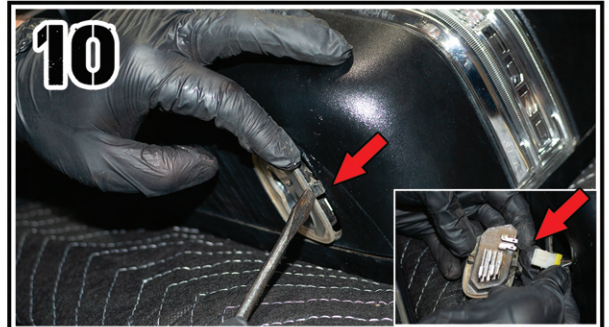
ORACLE PART #5908-001

INSTALLATION GUIDE

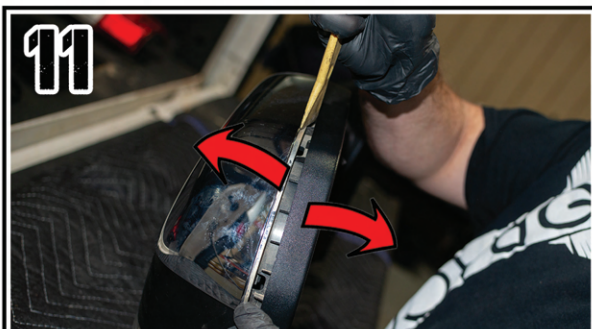
TOOLS NEEDED:
7MM & 10MM SOCKET
FLAT HEAD SCREWDRIVER
WIRE CRIMPS
STRIPPERS
PANEL TOOL



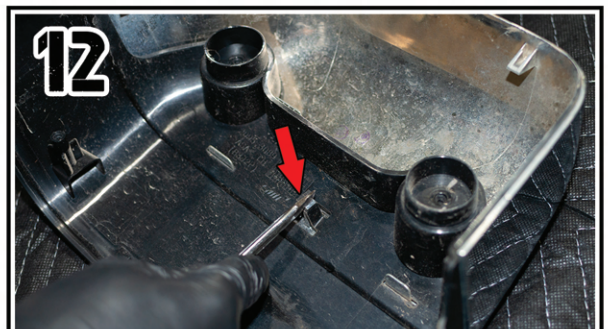
REMOVE THE (5) 7MM SCREWS.



DEPRESS THIS TAB TO REMOVE THE PUDDLE LIGHT.
DISCONNECT THE PUDDLE LIGHT.



USING A PANEL TOOL, PRY THE MIRROR CAP
FROM THE MIRROR HOUSING.

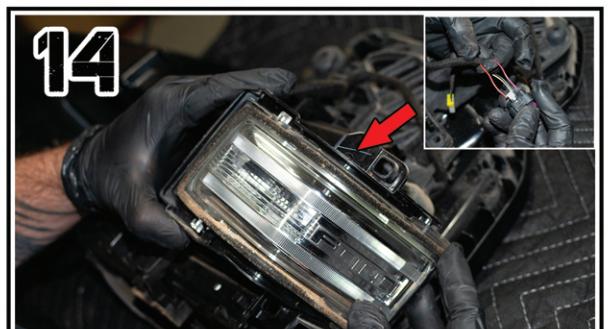


USING A FLAT HEAD SCREWDRIVER, DEPRESS THIS CLIP.
MIRROR CAP CAN NOW BE REMOVED.



ENSURE TABS ARE FULLY ENGAGED
WHEN REINSTALLING

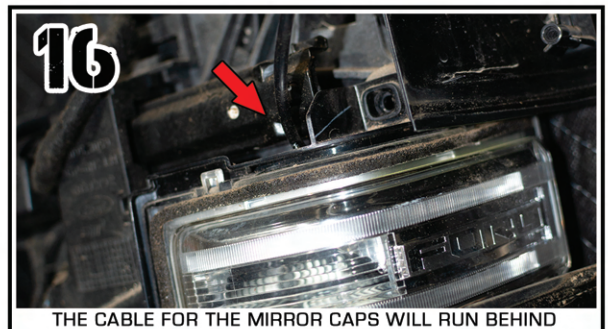
INSTALL THE NEW ORACLE LED MIRROR CAP
IN THE PLACE OF OEM MIRROR CAP.



THE POWER PLUG THAT IS CONNECTING TO THIS TURN
SIGNAL HOUSING WILL BE USED TO TAP IN OUR WIRES.



T-TAP THE GROUND (-) WIRE TO THE PINK WIRE.
T-TAP THE POWER (+) WIRE TO THE RED WIRE.



THE CABLE FOR THE MIRROR CAPS WILL RUN BEHIND
THE TURN SIGNAL HOUSING. NOW RE-ASSEMBLE MIRROR
IN REVERSE ORDER.