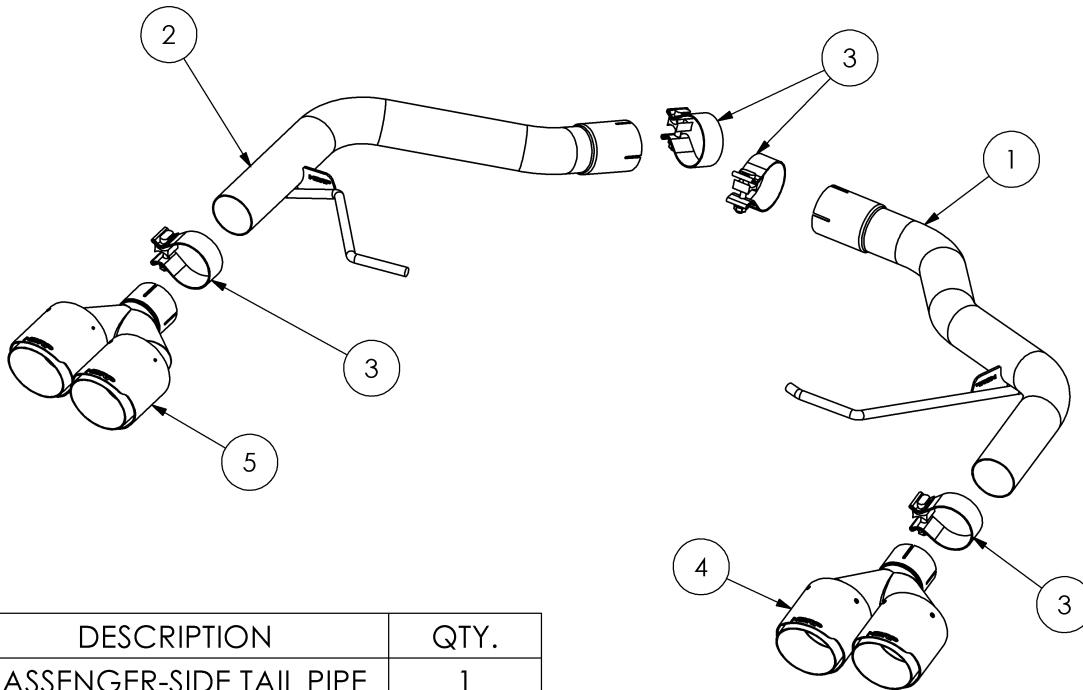


# S56023CF

2014-UP PORSCHE MACAN GTS/S/TURBO,  
AXLE BACK, MUFFLER BYPASS, 2.5" ,  
2019+ VEHICLES MAY REQUIRE VALVE  
SIMULATORS



ITEM	DESCRIPTION	QTY.
1	PASSENGER-SIDE TAIL PIPE	1
2	DRIVER-SIDE TAIL PIPE	1
3	2.5" CLAMP	4
4	PASSENGER-SIDE TIP	1
5	DRIVER-SIDE TIP	1

Refer to this LOT NUMBER when contacting customer service: \_\_\_\_\_

## PLEASE READ BEFORE STARTING INSTALLATION

While MBRP has made every effort to ensure that all components of this system are of superior quality and properly packaged, it is the installer's responsibility to ensure the following before removal of the factory exhaust:

- that ALL components shown above are present.
- that ALL mating components fit together.
- that there are no damaged components.
- that the system you have purchased is appropriate for your vehicle year, model and configuration.
- that the system will not interfere with any modifications previously installed or planned.
- that you have read and understand these instructions.

If you have any questions or are uncertain about any aspect of the installation of this system to your vehicle please contact your dealer before commencing installation.

# MBRP

## Removal of stock system:



Figure 1



Figure 2



Figure 3



Figure 4



Figure 5

1. Apply a penetrating lubricant liberally to all hangers, hardware and rubber isolators.

2. Disconnect the Exhaust Valve Actuator wiring if applicable.

3. Cut the factory Driver-Side muffler 3" from the welded bracket on the y-pipe. **Refer to Figure 1.**

4. Cut the factory Passenger-Side muffler 3" from the end of the bend. **Refer to Figure 2.**

5. Un-bolt the factory rubber isolators from the vehicle and remove the factory mufflers. Retain the rubber isolators and hardware for re-installation.

## Installation of MBRP Performance Exhaust:

1. Install the factory rubber isolators onto the **Driver-Side Tail Pipe** and **Passenger-Side Tail Pipe**. **Refer to Figure 3.**

2. Install the **Passenger-Side Tail Pipe** onto the factory y-pipe with one of the supplied **2.5" Band Clamps**. Re-install the factory rubber isolator to the vehicle with the factory hardware. Repeat with the **Driver-Side Tail Pipe**. Do not fully tighten the clamps. **Refer to Figure 4.**

3. Using a **2.5" Clamp**, loosely install the **Driver-Side Tip**. Orient the **2.5" Clamp** so that it is easily tightened yet tucked up out of sight. Repeat for the **Driver-Side Tip**. **Refer to Figure 5.**

**Note:** The factory exhaust valve actuators are not used, to avoid error codes, reconnect and secure factory valves in a safe location, or use the appropriate valve simulators.

# MBRP



**Figure 6**

4. Align the edge of each band clamp with the edge of the joint it is connecting. Align the **Exhaust Tips** to your liking and tighten all hardware and clamps, starting at the front and working rearward to secure the system. Check along the full length of the exhaust system to ensure there is adequate clearance for fuel lines, vent lines, brake lines, frame, bodywork, suspension, and any wiring, etc. If there is any interference detected, relocate, or adjust to provide adequate clearance. Ensure all clamp connections are secure and components are unable to rotate or slide. Band clamps require approximately 45 lb-ft (60 N-m) of torque. Verify clearances, system security and band clamp torque after 30-60 miles (50-100 km) of driving.



**Congratulations!** You are ready to begin experiencing the improved power, sound and driving experience of your **MBRP** Performance Exhaust system. We know you will enjoy your purchase.