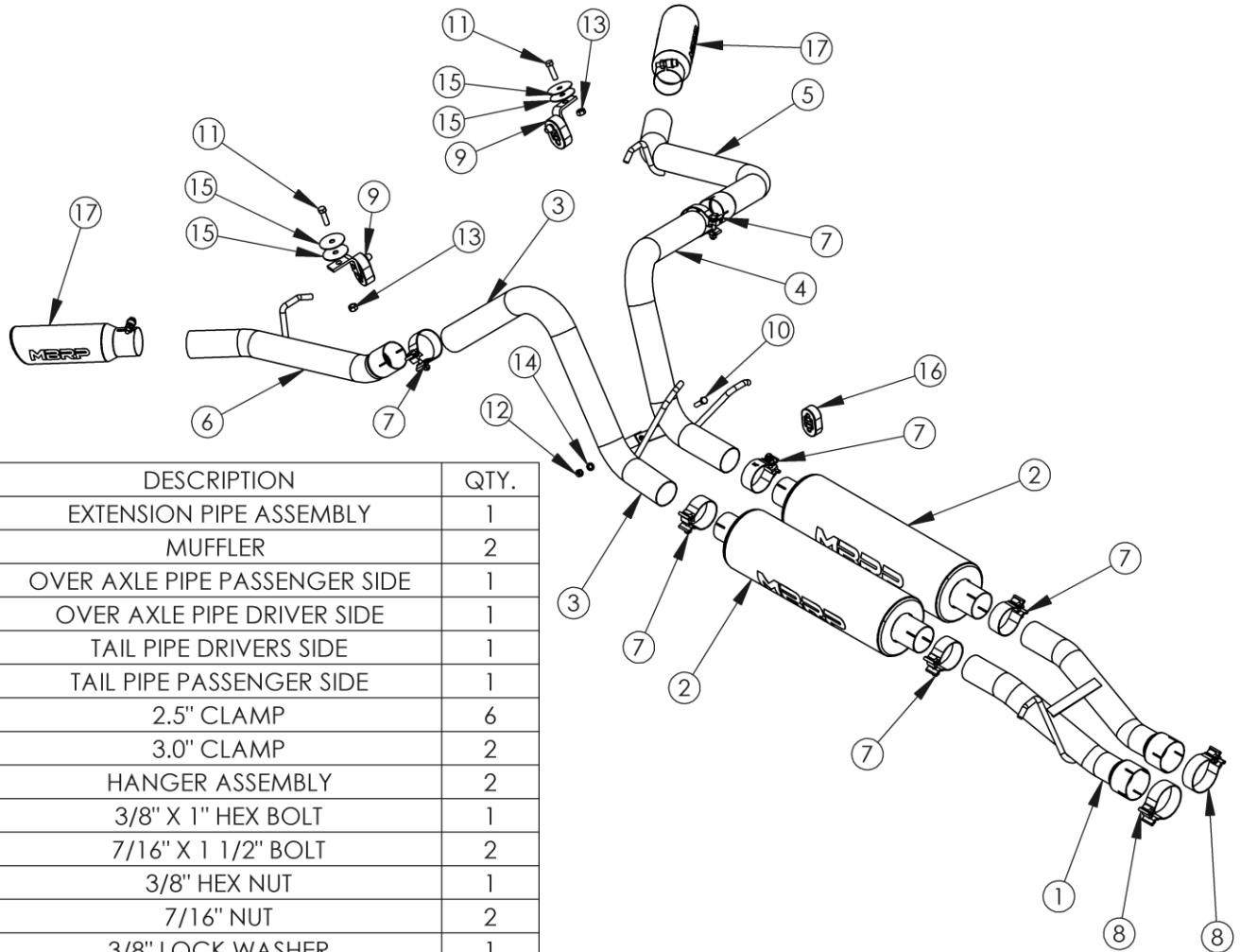


S5012

2001-2006 CHEV/GMC 2500 HD, 6.0L,
CREW CAB - SHORT BOX , CAT BACK, 2.5"
DUAL SPLIT SIDE

MBRP®



ITEM	DESCRIPTION	QTY.
1	EXTENSION PIPE ASSEMBLY	1
2	MUFFLER	2
3	OVER AXLE PIPE PASSENGER SIDE	1
4	OVER AXLE PIPE DRIVER SIDE	1
5	TAIL PIPE DRIVERS SIDE	1
6	TAIL PIPE PASSENGER SIDE	1
7	2.5" CLAMP	6
8	3.0" CLAMP	2
9	HANGER ASSEMBLY	2
10	3/8" X 1" HEX BOLT	1
11	7/16" X 1 1/2" BOLT	2
12	3/8" HEX NUT	1
13	7/16" NUT	2
14	3/8" LOCK WASHER	1
15	7/16" FENDER WASHER	4
16	ISOLATOR	1
17	EXHAUST TIP	2

PLEASE READ BEFORE STARTING INSTALLATION

While MBRP has made every effort to ensure that all components of this system are of superior quality and properly packaged, it is the installer's responsibility to ensure the following before removal of the factory exhaust:

- that ALL components shown above are present.
- that ALL mating components fit together.
- that there are no damaged components.
- that the system you have purchased is appropriate for your vehicle year, model and configuration.
- that the system will not interfere with any modifications previously installed or planned.
- that you have read and understand these instructions.

If you have any questions or are uncertain about any aspect of the installation of this system to your vehicle please contact your dealer before commencing installation.



Removal of Stock System:

1. Measure and mark the pipes 13" from the front of the muffler. The pipes now need to be cut square where the pipes were marked.
2. Apply a penetrating lubricant liberally to all exhaust fasteners, hangers and rubber insulators.
3. Remove the hangers from the rubber insulators and remove the exhaust from the vehicle. If a hoist or hydraulic lift is not being used the tail pipe may need to be cut to clear the rear axle.

Installation of MBRP Performance Exhaust:

1. Loosely attach the **Extension Pipe Assembly** where the pipes were cut previously using the **3.0" Clamps** and place the hanger into the factory rubber insulator located on the frame.
2. Install **Mufflers** onto **Extension Pipe Assembly** using the **2.5" Clamps** provided.
3. Apply some lubricant to the factory rubber insulator located above the rear of the **Mufflers** and slide it over the stop towards the passenger side of the vehicle. Apply some lubricant to the rubber insulator provided with the system and slide it over the factory hanger. Position it where the factory rubber insulator was located.
4. Loosely install the **Driver Side Over Axle** pipe connecting it to the **Muffler** closest to the drive shaft using a **2.5" Clamp**. Install the hanger into the rubber insulator installed in the previous instruction.
5. Feed the **Passenger Side Over Axle** pipe over the axle and install it loosely using a **2.5" Clamp**. Install the hanger into the factory rubber insulator, moved in the previous instruction.
6. Line up the holes in the tabs on the over axle pipes and loosely attach using the **3/8" Hex Bolt, Lock Washer** and **Hex Nut** provided.
7. Feed the expanded end of the **Driver Side Tail Pipe** from the rear of the vehicle over the axle, around the outside of the shock absorber and connect it to the **Driver Side Over Axle Pipe** using a **2.5" Clamp** provided.
8. Move the **Driver Side Tail Pipe** into approximate position. Using the factory hole provided in the frame located directly above the tail pipe hanger, attach the hanger provided using the **Hanger Assembly**. Use the **7/16" Bolt, Fender Washers** and **Nut** provided to assemble.
9. Feed the expanded end of the **Passenger Side Tail Pipe** from the rear of the vehicle over the axle and loosely connect it to the **Passenger Side Over Axle Pipe** using a **2.5" Clamp** provided.
10. Move the **Passenger Side Tail Pipe** into approximate position. Using the factory hole provided in the frame located directly above the tail pipe hanger, attach the hanger provided using the **Hanger Assembly**. Use the **7/16" Bolt, Fender Washers** and **Nut** provided to assemble.
11. Install the mirror polished **Exhaust Tips**. It is recommended to install them at this point to assist with the final system alignment.
12. Adjust the **Tail Pipes** and check along the whole length of the exhaust system all hardware and clamps, starting at the front and working rearward to secure the system. Check along the full length of the exhaust system to ensure there is adequate clearance for fuel lines, vent lines, brake lines, frame, bodywork, suspension, and any wiring, etc. If there is any interference detected, relocate, or adjust to provide adequate clearance.
13. Ensure all clamp connections are secure and components are unable to rotate or slide. Band clamps require approximately 45 lb-ft (60 Nm) of torque. Verify clearances, system security and band clamp torque after 30-60 miles (50-100 km) of driving.

Congratulations! You are ready to begin experiencing the improved power, sound and driving excitement of your **MBRP** performance exhaust system. We know you will enjoy your purchase.