



Installation Instructions

For Part Numbers:

250-274 720-484 Airaid Oiled Media Filter

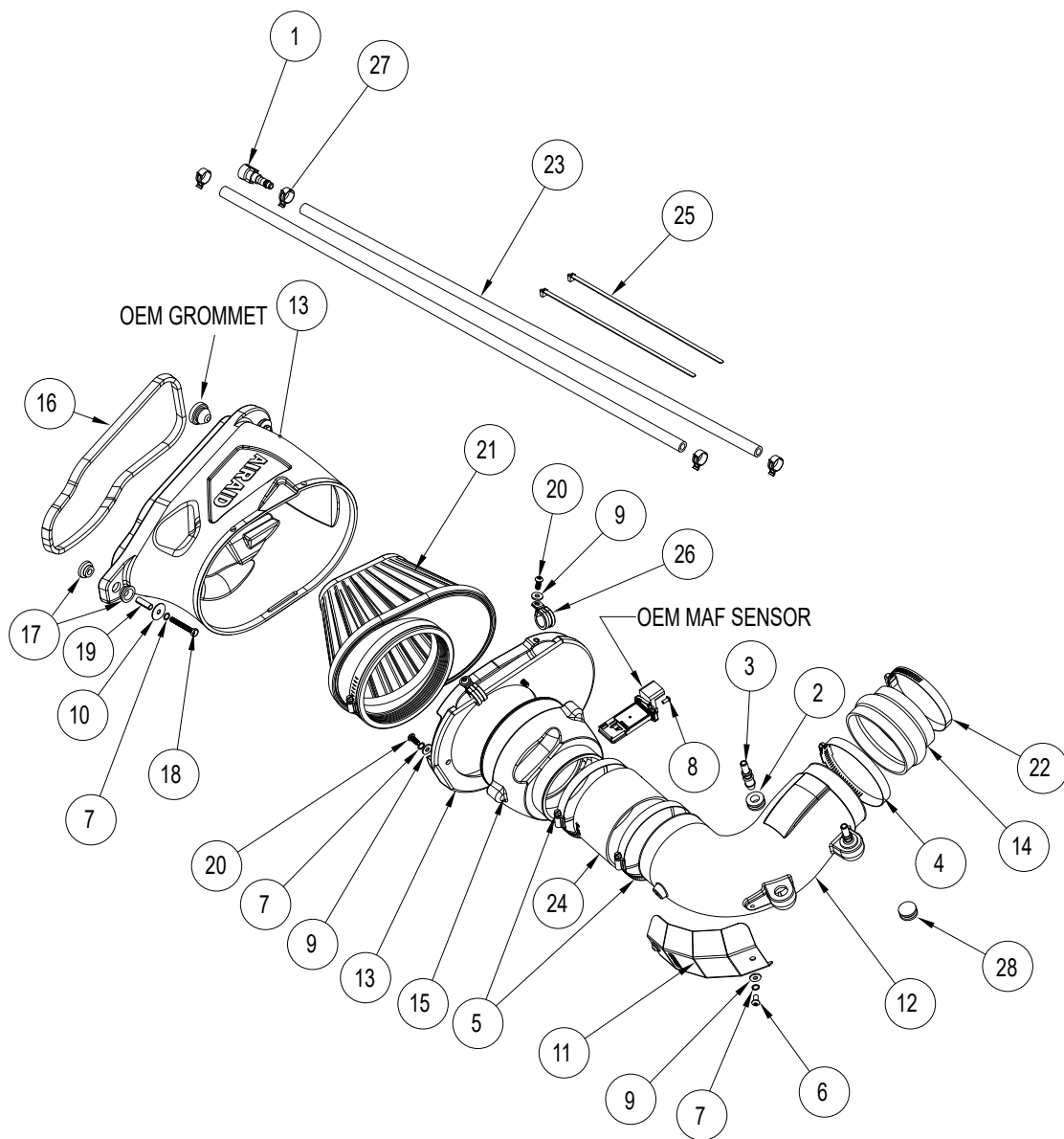
251-274 721-484 SynthaMax Dry Media Filter - Red

2014-19 Chevrolet Corvette

V8-6.2L

NOT LEGAL FOR SALE OR USE ON ANY POLLUTION CONTROLLED MOTOR VEHICLE IN CALIFORNIA OR STATES ADOPTING CALIFORNIA EMISSION PROCEDURES.

See Airaid.com for CARB status on each part for a specific vehicle



Component Identification

1	082629	FITTING; VENT 1/2" BARB QUICK CONNECT	1
2	KITGRMT03	GROMMET, 0.500ID-0.750GD-0.190GW	2
3	KITFITTING05	COUPLER, HOSE ALUM .500 X .375	2
4	KITHS64	CLAMP, HOSE .563W 3.563MIN 4.500MAX	1
5	KITHS72	CLAMP, HOSE .563W 1.875MIN 5.000MAX	2
6	KIT15DHC3050	SCREW, BUTTON HEAD CAP 1/4-20 X .500L	2
7	08198	WASHER, SPLIT LOCK, 1/4"	9
8	KIT15BHC3038	SCREW, BUTTON HEAD CAP SS 8-32 X .375	2
9	08275	WASHER, FLAT	7
10	08160	WASHER, FLAT	2
11	KIT274HS	HEAT SHIELD, 250-274	1
12	KIT274T	TUBE, INTAKE, 250-274	1
13	KIT274CAB-DAM	AIRBOX, INTAKE, 250-274	1
14	KITHUMPHS48	HUMPHOSE, REDUCING 4.250D-3.875D-2.500L	1
15	KIT274MAFADA	FILTER ADAPTER, 250-274	1
16	KIT298G	.500 X .312 FOAM, 31" L	2
17	KITGRMT15-1	POST GROMMET	4
18	KIT20CSCZ6450	HEX BOLT, 6MM X 45MM	2
19	KITSPACER11	SPACER, .26 ID X .34 OD X 1.00 L	2
20	KIT142058BHCCSS	SCREW, BUTTON HEAD CAP 1/4-20 X .625L	5
21	720-484	FILTER, 720-473	1
22	08628	HOSE CLAMP	1
23	08636	HOSE	2
24	5-450	HOSE, SILICONE COUPLER, 4.5" DIA. X 3.0"	1
25	21590	CABLE TIES; 11" BLACK	2
26	077014	CLAMP, STEEL LOOP, SLEEVED. 3/4" I.D.	2
27	08553	HOSE CLAMP; SPRING BAND 20MM X 12MM	4
28	21684-1	PLUG; 1-3/16"OD, 11/16"ID X 7/16"HT	1

Full color instructions can be viewed on our web site at Airaid.com. If you need any assistance please call 1-800-858-3333 to speak with a representative in our Customer Service Center before returning the product.

TO START:

1. Turn off the ignition and disconnect the negative battery cable. Be sure the vehicle is completely cool before beginning this installation.

NOTE: Disconnecting the negative battery cable erases pre-programmed electronic memories. Write down all memory settings before disconnecting the negative battery cable. Some radios will require an anti-theft code to be entered after the battery is reconnected. The anti-theft code is typically supplied with your owner's manual. In the event your vehicles anti-theft code cannot be recovered, contact an authorized dealership to obtain your vehicles anti-theft code.



2. Remove the four screws that secure the radiator heat extractor duct to the radiator and then remove the duct from the vehicle.



3. Depress the grey locking tabs and then disconnect the crank case vent lines from the factory intake tubes.
NOTE: Some vehicles may not be equipped with the vent line from the driver's side valve cover.



4. Loosen the two hose clamps that secure the factory intake tube to the throttle body and air filter housing and then remove the tube from the vehicle.



5. Slide the red tab back and then depress the mass air sensor locking tab and disconnect the mass air sensor electrical connection.



6. Unhook the coolant lines from the air filter housing, then loosen the two screws that secure the mass air portion of the air filter housing and remove it from the vehicle along with the factory air filter.

Continued...



7. Remove the two bolts that secure the remaining air filter housing to the inner fender and then remove the housing from the vehicle.

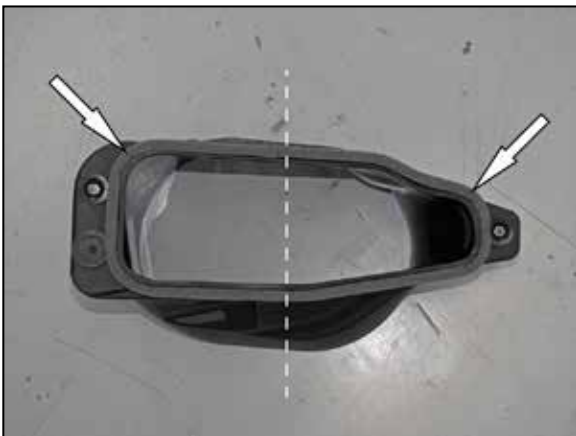
NOTE: AIRAID recommends that customers do not discard factory air intake.



8. Insert the mounting grommets with sleeves into the AIRAID® air filter housing at the two locations shown.
NOTE: The rubber grommets will be on both sides of the part with the sleeve passing through them.

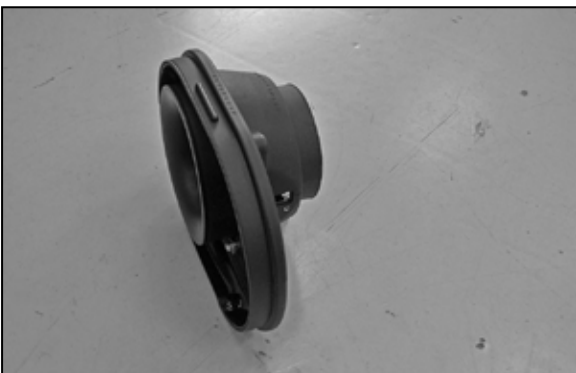


9. Transfer the factory air filter housing mounting grommet to the AIRAID® air filter housing in the location shown.



10. Install the foam gaskets onto the AIRAID® air filter housing in the location shown.

NOTE: Be sure the area the gasket applies is clean before installing the gaskets.



11. Install the outer air filter housing onto the AIRAID® mass air housing and secure with the provided hardware.



12. Remove the mass air sensor from the factory housing and then install it into the AIRAID® housing and secure with the provided hardware.



13. Install the AIRAID® air filter onto the AIRAID® mass air sensor assembly and secure with the provided hose clamp.



14. Install the provided grommets and crank case vent fittings into the AIRAID® intake tube as shown.

NOTE: On vehicles that are not equipped with the crank case vent line from the driver's side valve cover, install the provided plug into the hole closest to the throttle body end of the tube.



15. Install the provided heat shield onto the AIRAID® intake tube and secure with the provided hardware.



16. Install the AIRAID® air filter housing into the inner fender so that the mounting grommet engages with the mounting stud. Secure the housing with the provided hardware.

NOTE: Use caution when installing the housing so the gaskets do not become damaged.



17. Be sure the vehicle is completely cool before beginning this step. Be sure to capture any coolant that leaks from the lines. Using a razor or sharp instrument, cut the nylon coolant lines in the three locations shown. Use multiple shallow cuts so as not to cut too deep and cause damage to the underlying fittings. Remove the nylon coolant lines from the check valve and tee fitting and expansion tank. The check valve should still be attached to the line attached to the radiator.



18. Install the provided quick disconnect fitting into one of the provided coolant hoses and secure with the provided spring clamp.



19. Trim the hose with the quick disconnect fitting to 31-1/2" long and trim the remaining hose to 11" long. Install the 31-1/2" long hose from the expansion tank to the tee fitting. Secure the hose with the provided spring clamp, route the hose as shown and secure with the provided tie wraps. Install the 11" hose onto the check valve and tee fitting and secure with the provided spring clamps.



20. Install the AIRAID® filter assembly into the filter housing, install the provided loop clamps onto the coolant hose and then secure the filter assembly and coolant hose with the provided hardware.

Continued...



21. Install the provided hump coupler onto the throttle and secure with the provided hose clamp.



22. Install the provided straight coupler onto the AIRAID® mass air sensor and secure with the provided hose clamp.



23. Install the AIRAID® intake tube into the straight coupler at the mass air sensor and then into the hump coupler at the throttle body, adjust the tube for best fit and then secure with the provided hose clamps.



24. Connect the crank case vent hoses onto the fittings installed into the AIRAID® intake tube.



25. Reconnect the mass air sensor electrical connection.



26. Reinstall the radiator heat extractor duct and secure with the factory hardware.



27. Double check your work!

Make sure there is no foreign material in the intake path. Make sure all clamps, hoses, bolts, and screws are tight. Double check the hood clearance!

Reconnect the negative battery cable!

Thank you for purchasing the Airaid Intake System. Contact Airaid @ (800) 498-6951 8:00 AM - 5:00 PM MST weekdays for questions regarding fit or instructions that are not clear to you. Your Airaid Intake System was carefully inspected and packaged. Check that no parts are missing, or were damaged during shipping. If any parts are missing, contact Airaid. The air filter element is protected from direct exposure to water and debris; care should be taken not to drive through deep water.

WATER INGESTION IS THE DRIVERS RESPONSIBILITY! The air filter is reusable and should be cleaned periodically.

FILTER IDENTIFICATION

720-484 Airaid Oiled Media

721-484 Airaid SynthaMax Dry Media - Red

For your Oiled media filter we offer the Airaid Tune Up Kit!



P/N 790-551 Aerosol Spray
P/N 790-550 Squeeze Spray



NOT LEGAL FOR SALE OR USE ON ANY POLLUTION CONTROLLED MOTOR VEHICLE IN CALIFORNIA OR STATES ADOPTING CALIFORNIA EMISSION PROCEDURES.

See Airaid.com for CARB status on each part for a specific vehicle

SynthaMax

Synthamax Air Filters **do not** require oil. Service air filter as needed by cleaning with common non-petroleum all-purpose household cleaner and water. Simple Green®, Formula 409® or equivalent works great. Apply cleaner to outside of air filter and allow to soak. Then flush filter clean from the inside out with a garden hose and repeat steps if necessary. Do not apply high pressure water or air to clean filter. Allow filter to air dry and reinstall.