



Installation Instructions

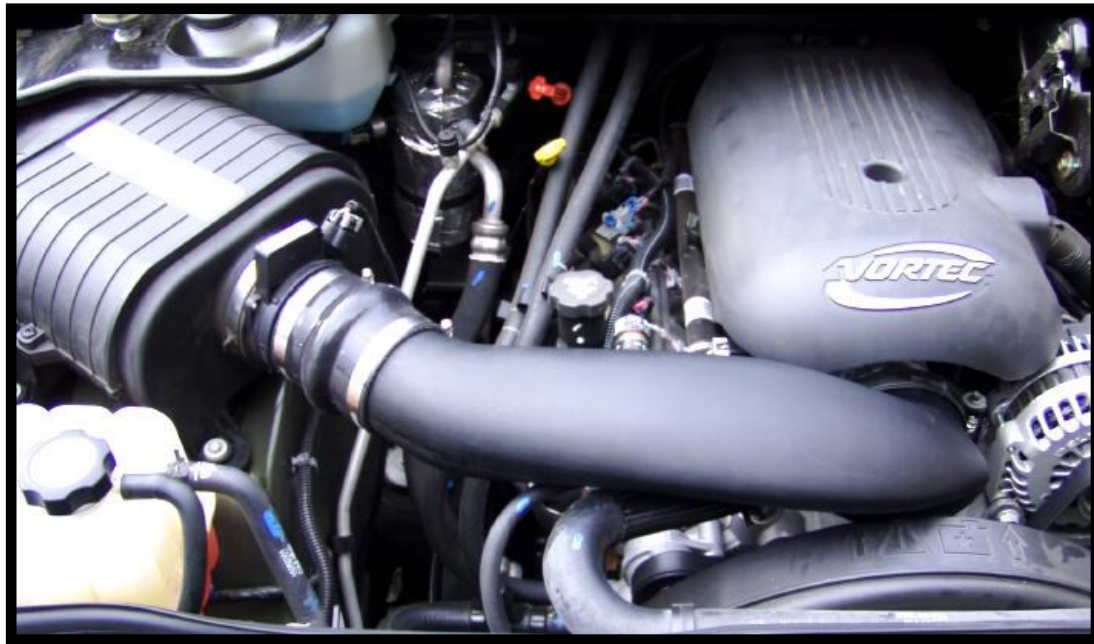
For Part Numbers:

200-983 Modular Intake Tube

200-783 Jr. Kit 720-182 Airaid Oiled Media Filter

201-783 Jr. Kit 721-182 SynthaMax Dry Media Filter - Red

2003-07 Hummer H2/ H2 SUT



Component Identification

1.	*Airaid Premium Filter	1
2.	Modular Intake Tube	1
3.	Urethane Hump Hose	1
4.	Coupler W/ #68 Clamp	1
5.	#60 Hose Clamp	2

*Filter Included only in Jr. Kits

Full color instructions can be viewed on our web site at Airaid.com. Use the **Product Search** function to find your part number, and click **View Details**.

I DISCONNECT NEGATIVE (-) BATTERY CABLE

II Remove Factory Intake Assembly

- A) Remove factory filter minder and rubber grommet and retain for re-installation. **See Fig#1**
- B) Loosen the factory hose clamps on each end of the factory intake tube assembly. **See Fig #2**
- C) Remove the factory intake tube assembly from vehicle. **See Fig #2**

III Airaid Modular Intake Tube Installation

- A) Install the provided coupler with clamp onto the Airaid Modular Intake Tube (MIT). **See Fig #3**
- B) Install the urethane hump hose provided onto the Airaid Modular Intake Tube (MIT) with the supplied hose clamps.
(Hint: slide the hump hose all the way onto the end of the MIT. **See Fig #4**)
- C) Install the Airaid MIT in place of the factory intake tube assembly. **See Fig #5**
- D) Re-install factory filter minder and rubber grommet into rear of Airaid MIT. **See Fig#6**
- E) Check for interference and adjust the MIT accordingly, then tighten the hose clamps.

IV Airaid Jr. Replacement Filter

- A) If you purchased the Airaid Jr. kit, replace the factory air filter with the Airaid Premium Filter included in the Airaid Jr. kit.

V Finishing Up

- A) Make sure that the intake path is clear of debris.
- B) Double check work to ensure proper fit and that all clamps are securely fastened.
- C) Re-connect negative battery cable.

Fig #1



Fig #2



Fig #3

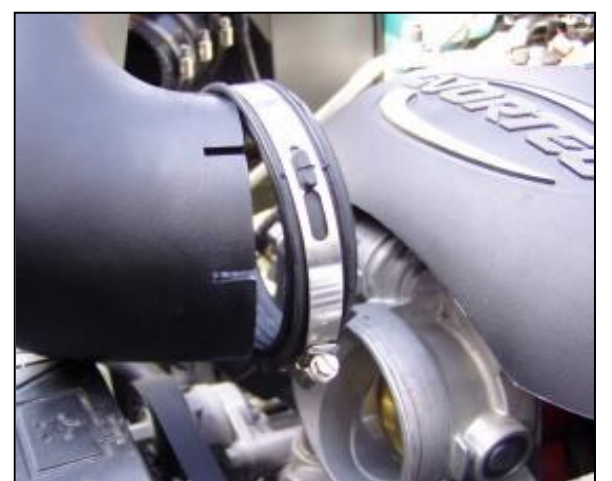


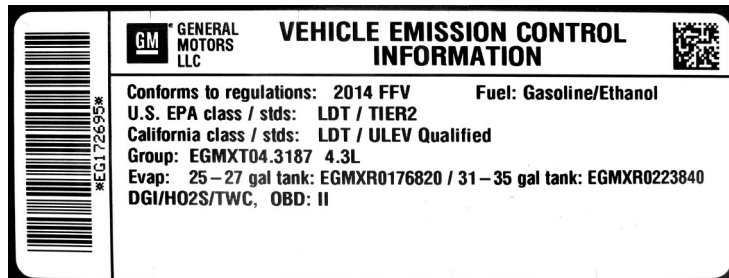
Fig #4



Fig #5



Fig #6



WARNING! If your vehicle has a Vehicle Emission Control Information decal affixed to the factory airbox, a new replacement label must be obtained and installed in a readily visible position in the engine compartment in order to remain CARB compliant. Failure to do so will prevent the vehicle from passing a smog check. Replacement labels can be ordered from your local dealership. Regulations state that the VECI label shall not be affixed to any equipment which is easily detached from the vehicle. Label placement, under the hood on a painted surface is recommended.

Thank you for purchasing the Airaid Intake System. Contact Airaid @ (800) 498-6951 8:00 AM - 5:00 PM MST weekdays for questions regarding fit or instructions that are not clear to you. Your Airaid Intake System was carefully inspected and packaged. Check that no parts are missing, or were damaged during shipping. If any parts are missing, contact Airaid. The air filter element is protected from direct exposure to water and debris; care should be taken not to drive through deep water. WATER INGESTION IS THE DRIVERS RESPONSIBILITY! The air filter is reusable and should be cleaned periodically.

FILTER IDENTIFICATION

720-182 Airaid Oiled Media

721-182 Airaid SynthaMax Dry Media - Red

For your Oiled media filter we suggest using the AIRAID Filter Tune-Up Kit!



Do Not Oil



P/N 790-551 Aerosol Spray
P/N 790-550 Squeeze Spray



Synthamax Air Filters do not require oil. Service air filter as needed by cleaning with common non-petroleum all-purpose household cleaner and water. Simple Green®, Formula 409® or equivalent works great. Apply cleaner to outside of air filter and allow to soak. Then flush filter clean from the inside out with a garden hose and repeat steps if necessary. Do not apply high pressure water or air to clean filter. Allow filter to air dry and reinstall.