



Twin Tec VRFI Gen 4 Fuel Injection System Installation & Tuning Manual

CAUTION: CAREFULLY READ INSTRUCTIONS BEFORE PROCEEDING. NOT LEGAL FOR SALE OR USE IN CALIFORNIA OR ON ANY POLLUTION CONTROLLED VEHICLES.

OVERVIEW

The Twin Tec VRFI Gen 4 fuel injection controller replaces the original equipment (OE) 36 pin Delphi® controller on 2002 and later Harley-Davidson® V-Rod motorcycles with fuel injected VRSC engines. **The term VRFI is used throughout this document as a generic term and refers to the new VRFI Gen 4 controller unless otherwise noted.**

The VRFI Gen 4 kit includes the new WEGO IIID dual channel wide-band exhaust gas oxygen sensor interface that allows simultaneous front and rear cylinder auto-tuning during actual riding conditions.

CAUTION: Tuning the VRFI requires competency in PC operation, using Microsoft Windows based programs, and basic engine tuning and fuel injection mapping concepts. The VRFI installer is assumed to be familiar with the Delphi® fuel injection system and to have access to basic test equipment and factory service manuals.

QUICK START SYSTEM INSTALLATION AND SETUP

1. Check the exhaust system. If you can insert a broomstick through the mufflers, you have the equivalent of open drag pipes and auto-tuning will fail. If applicable, read the section about exhaust considerations starting on page 9.
2. Check for updates. This tuning manual is for VRFI Gen 4 units with revision 1.0 or higher firmware. Before proceeding, check our website at www.daytona-twintec.com for available updates for the VRFI firmware, accompanying PC based software, and documentation.
3. Tech support. If you have questions or encounter problems at any point during the installation

process, please contact our tech support at 386-304-0700.

4. USB interface. Read the USB interface instructions starting on page 15, install the USB drivers and configure the COM port.
5. PC Link software used for setup and engine tuning. Read the PC Link VRFI instructions starting on page 17 and install the software.
6. Data logging software. Read the VRFI Log instructions starting on page 31 and install the software.

WARNING: You must use version 14.2 or higher PC Link VRFI software for setup and tuning. To access all logged data, you must use version 14.1 or higher VRFI Log software.

7. VRFI Controller. Read the VRFI installation instructions starting on page 38 and install the VRFI unit.
8. WEGO wide-band exhaust gas oxygen sensor interface. Read the WEGO installation instructions starting on page 39, install the WEGO unit and perform the free air calibration described on pages 40-41.
9. Connect the USB interface cable between the VRFI unit and your PC.
10. Start the PC Link VRFI software, use the Open File command, and open the appropriate setup file. Setup data files are provided in the program folder for typical engine applications. Refer to Table 2 on page 14 for details. Additional setup guidelines for larger displacement engines are given on page 8.
11. Use the Edit Basic Parameters command. Make any required changes such as estimated rear wheel horsepower, injector flow rating, and RPM limit. **You must set the vehicle speed sensor (VSS) frequency for your model.** This affects speedometer/odometer scaling, idle RPM control, and turn signal cancellation. Refer to page 28. Do

-
- not change any other parameters or options unless there is a specific reason to do so. Click OK when done.
12. Use the Save File command to save your initial setup file with an easily identifiable name (refer to suggestions in the editing and file operations section on page 2).
 13. Turn the ignition key and run/stop switch on. Upload the setup data to the VRFI unit. Turn the run/stop switch off. This initializes the idle air control (IAC) motor.
 14. Start the VRFI Log software. Turn the run/stop switch on but do not start the engine. Use the View Idle TPS command on the View menu. Idle throttle position sensor (TPS) volts are displayed on the TPS bar graph gauge. The TPS value must be within the range of .30-.80 volts. If not, refer to the throttle body setup and idle TPS adjustment sections starting on page 4. Turn the run/stop switch off when complete.
 15. Cold start test and initial auto-tuning. Position the motorcycle so that you can perform a cold start test while monitoring engine data with VRFI Log software and then be able to disconnect the USB interface and ride the bike for initial auto-tuning. To allow viewing and logging air/fuel (AFR) data immediately after engine start, turn the ignition switch on but leave the run/stop switch in the stop position. Wait at least 15 seconds for the WEGO sensors to warm up and then start the engine. Monitor real time engine data and status with VRFI Log software.
 16. Allow the engine to idle until it reaches 90° C (195° F) engine temperature (ET). This will typically take about 10 minutes. If the engine does not start or stalls, refer to the diagnostic tips in the idle tuning section starting on page 5.
 17. Monitor front and rear cylinder AFR and block learn multiplier (BLM), ET, and IAC values. Keep notes on your observations of these values. After 30 seconds, the system should be operating in closed loop and maintaining the desired idle AFR (nominal value of 13.8). The BLM values should remain within the range of 80-120%. The IAC value should slowly go down as the engine reaches operating temperature and requires less idle air. BLM values below 100% indicate that the VRFI is removing fuel in closed loop to correct a rich condition. BLM values above 100% indicate that the VRFI is adding fuel in closed loop to correct a lean condition. Refer to the VRFI operation section starting on page 3 for details. If the BLM values go below 80% or above 120% anytime during the warm up period, the system is running out of adjustment range. Refer to the suggestions in the idle tuning section starting on page 5.
 18. Once the engine reaches 90° C (195° F) ET, do not shut the engine off, disconnect the USB cable, and ride the motorcycle for at least 15 minutes. Repeatedly accelerate through the useable RPM range in every gear at different throttle positions. Also operate the motorcycle at various fixed speeds likely to be encountered during normal riding. For safety reasons, wide open throttle runs should be done on a closed course. If lean surging or spark knock is noted, refer to the suggestions in the auto-tuning section starting on page 7.
 19. Hot restart test. After the initial ride, shut the engine off and allow it to hot soak for 10 minutes. To allow viewing and logging AFR data immediately after engine restart, turn the ignition switch on but leave the run/stop switch in the stop position. Wait at least 15 seconds for the WEGO sensors to warm up and then restart the engine and let it idle. Monitor real time engine data and status with VRFI Log software. Verify that the AFR values do not exceed 15.0 before closed loop operation. Allow the engine to idle until it reaches 90° C (195° F) ET again. Verify that the IAC position is in the range of 25-40 steps. If not, refer to the suggestions in the idle tuning section starting on page 5.
 20. Auto-tuning. The closed loop auto-tuning process consists of operating the motorcycle through a wide range of loads and speeds while periodically monitoring progress using the PC Link VRFI software. Long rides at constant speed and load are of no value. After 1-2 hours of engine operation, download the current setup with PC Link VRFI software and use the Edit 3D Table – BLM Tables – Edit Front and Edit Rear BLM Table commands to examine the BLM tables. Cells that are shaded red indicate that the system has run out of correction range. Then use the Apply Front and Apply Rear BLM Table commands to automatically correct the Alpha-N fuel table and front cylinder trim table. This also resets all the BLM values back to 100% and allows auto-tuning to continue. Save the edited setup file to disk and upload it to the VRFI. Continue this auto-tuning process until most of the BLM cells remain in the 90-110% range. Refer to the auto-tuning section starting on page 7 for more details.
 21. Final checks. Verify absence of spark knock during throttle roll on and wide open throttle acceleration.

Verify that the speedometer reading is accurate and that the turn signals cancel properly.

Copy, Paste, and Modify commands on the right mouse button pop up menu.

EDITING AND FILE OPERATIONS

After initial setup, the VRFI tuning process requires multiple edits of the engine tables and parameters using PC Link VRFI software. Unless otherwise noted, editing involves downloading the current setup data in the VRFI, performing the required edits, saving table edits to buffer memory, saving the revised setup file to disk, and then uploading it to the VRFI. You should always print out any affected tables and parameters and save each revised file with a unique filename. Use a filename that incorporates the customer name and a date code, such as Chris_20090410a.dat. We suggest that you create a separate folder for all tuning files. Keep detailed written notes on the changes you make and the associated filenames. Make frequent backup copies onto removable media such as a USB Flash drive.

New customers with limited PC experience often become confused and have problems with simple Windows file management functions including the use of the Windows Explorer. We regret that we cannot provide tech support for Windows related issues. We suggest that you spend some time practicing with the PC Link VRFI and VRFI Log software, including the

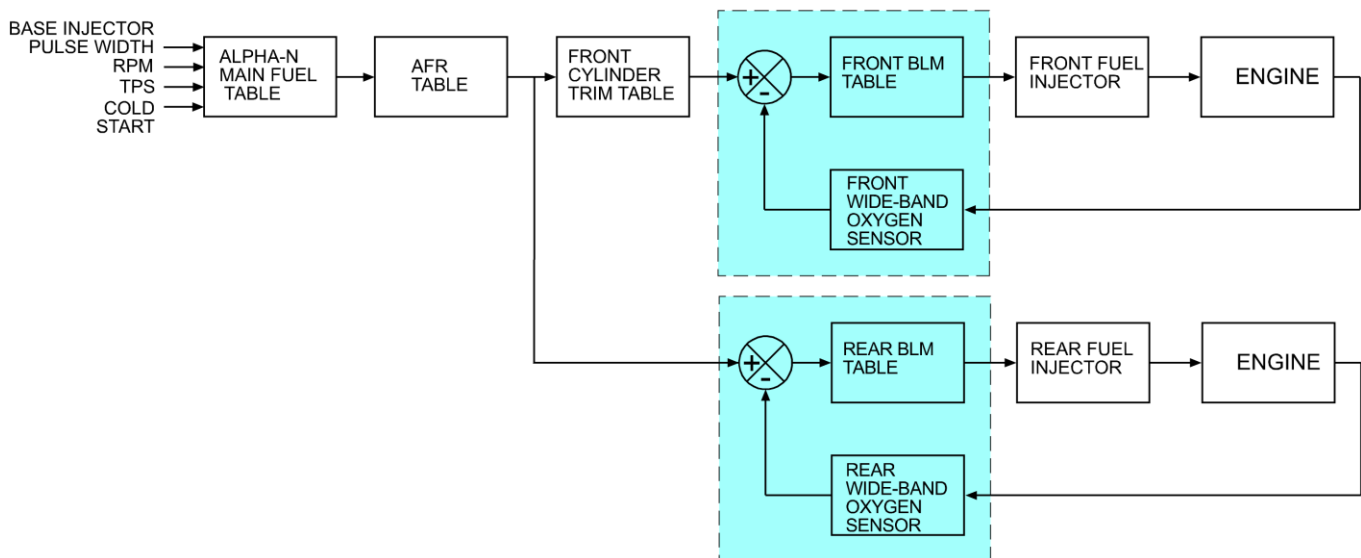
OVERVIEW OF VRFI OPERATION

The VRFI controls air/fuel ratio (AFR) and idle RPM using individual control loops. Each control loop can operate open loop (without feedback correction) or closed loop (with feedback correction) depending on conditions.

If you are not familiar with control systems concepts such as open and closed loop operation, we suggest that you order Understanding Automotive Electronics (Sixth Edition) by William B. Ribbens from www.amazon.com. Chapter 2 includes an excellent introduction to control system theory.

The output of the AFR control loop is injector pulse width. A higher pulse width causes more fuel to be injected and decreases the AFR towards a rich condition. An initial estimate of horsepower and injector size (flow rate) is used to calculate a base injector pulse width. Base injector pulse width corresponds to the amount of fuel required to generate a stoichiometric mixture (14.7 AFR) at wide open throttle (WOT), 6,000 RPM and standard atmospheric conditions. Base injector pulse width is then corrected for intake air temperature (IAT) and barometric pressure.

VRFI CLOSED LOOP FUEL CONTROL

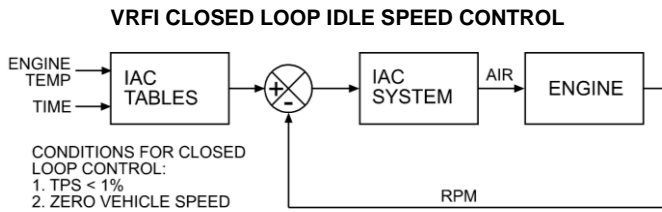


At any given RPM and throttle position (TPS), the corrected base injector pulse width is multiplied by the values in the Alpha-N table (main fuel table), AFR table (the AFR command), front cylinder trim table (only for the front cylinder), and block learn multiplier (BLM) tables. The BLM tables store closed loop

correction factors based on feedback from the WEGO system. Independent BLM tables are used for front and rear cylinders. The BLM tables are continually updated whenever the system is operating in closed loop (generally 30 seconds after engine start). The BLM tables are updated based on the AFR error (difference

between AFR command and actual AFR read by the WEGO system). During auto-tuning, BLM values are only saved if the engine reaches 75° C (170° F) and runs for at least 5 minutes. This is set by warm engine temperature and engine warm-up time parameters (refer to page 26).

Additional cold start enrichment fuel is applied based on engine temperature and elapsed time since engine start. Priming fuel is injected when the run/stop switch is cycled on. A fixed pulse width injection is also used during cranking (RPM < 400). Two tables set the priming and cranking pulse widths based on engine temperature.



The output of the idle RPM control loop is idle air control (IAC) stepper motor position ranging from 0-127. A higher IAC value allows more air flow and increases engine RPM. A table sets the idle RPM command as a function of engine temperature. This allows a higher idle RPM while the engine is cold. Closed loop idle RPM control is only enabled when vehicle speed is zero and TPS is less than the idle TPS value (usually 1%). Under open loop conditions (such as the motorcycle being driven while the engine is warming up), IAC position is continually adjusted based on engine temperature and elapsed time since engine start. When the engine is fully warmed up, the system assumes that the IAC position will be close to a nominal value (usually 30). Additional idle air (IAC > nominal IAC value) is considered the same as increasing TPS since the effect on airflow is identical. Under cold start conditions, when the IAC value is high, the system may be using the 2.5% or 5% TPS rows in the fuel tables even when the throttle is closed.

The nominal idle IAC value (IAC steps once engine is fully warmed up and at stable idle condition) is automatically sampled and updated. This occurs after 8 seconds of stable idle whenever vehicle speed returns to zero while the motorcycle is operated. The updated value is saved after engine shut down. This feature eliminates the requirement to set the nominal idle IAC value as part of the tuning process and allows the system to automatically accommodate different throttle bodies.

For more detailed explanations of the AFR and idle RPM control loops and various tables, please download the TCFI Gen 4 Idle Tuning Tech Note.

THROTTLE BODY SETUP

An alpha-N (throttle position and RPM based) fuel control system such as the VRFI requires that certain condition be met by the throttle body. All aftermarket throttle bodies and even some stock Delphi® units will require adjustment for proper operation.

Idle control is by means of the IAC system. The throttle blades must remain at a fixed position against the idle stop screw when the throttle is closed. The throttle body is affected by thermal expansion. If the idle stop setting allows the throttle blades to completely close and contact the throttle bore, the blades may bind while cold. If the idle stop setting forces the throttle blades to stay open too far, the IAC system can lose control and set a diagnostic code. Either case can result in starting and idle stability problems.

Issues with throttle blade, linkage or cable binding are often encountered with installation of an aftermarket throttle body. Verify that the throttle system operates smoothly, that the take up cable has some slack, and that the return cable forces the throttle blades against the idle stop. Verify that the throttle blades do not bind when cold or hot.

If an initial adjustment is required for a new aftermarket throttle body and the manufacturer does not make a specific recommendation, set the idle stop screw so that the throttle blades just barely open and do not bind when the engine is cold.

IDLE TPS CHECK & ADJUSTMENT

Proper operation of the VRFI system depends on an accurate throttle position sensor (TPS) signal. You can use VRFI Log software to check the TPS sensor. Read the Idle TPS Display section on page 33 before proceeding.

Connect the USB interface cable and start VRFI Log software. Turn the run/stop switch on but do not start the engine. For VRFI Log, use the View Idle TPS command on the View menu. Idle TPS volts are displayed on the TPS bar graph gauge. With the throttle closed, the TPS value must be within the range of .30-.80 volts.

Some aftermarket throttle bodies are supplied with undercut screws that facilitate TPS sensor adjustment. If you need to make an adjustment and you do not have the undercut screws, you will have to

enlarge the holes and then use #8 flat washers with the original screws.

ENGINE STARTING PROCEDURE

With alpha-N fuel control, the proper engine starting procedure must be followed. When the run/stop switch is turned on, the VRFI reads the TPS voltage to establish zero percent throttle position. If the throttle is not fully closed at this point, all subsequent fuel control will be incorrect.

The throttle body is affected by thermal expansion. If the engine has cooled down or the motorcycle has sat overnight, we suggest that you momentarily open and then release the throttle before turning the run/stop switch on. Make absolutely sure that the throttle is fully closed before turning the run/stop switch on.

The throttle friction adjustment screw may prevent the throttle from fully closing. We suggest that you always leave this screw fully counterclockwise.

When the run/stop switch is turned on, the idle air control motor will move to the starting position and the fuel pump will be energized for several seconds, making an audible buzz. Do not press the starter button until the check engine light goes out and the fuel pump stops buzzing.

When you turn the run/stop switch off, the idle air control motor requires several seconds to return to its home position. After turning the run/stop switch off, you must wait for 5 seconds before turning the switch on again. If the engine stalls, we suggest that you cycle the run/stop switch off for 5 seconds and then on again before attempting a restart.

We recommend that you let the engine idle for about 20-30 seconds before operating the motorcycle. This allows the closed loop idle air control system to stabilize idle RPM.

If you make any changes or adjustments to the throttle body, disconnect the battery, swap out the VRFI unit, or upload new data or firmware, you must also cycle the run/stop switch, as explained above, in order to properly initialize the idle air control motor.

IDLE TUNING

Some applications will require adjustment of the idle stop screw. This should be completed before the motorcycle is driven.

Please note that during the initial period after engine start, fuel control is open loop (no feedback from the WEGO sensors) and relies entirely on correct

values in the Alpha-N table. The VRFI will enter closed loop AFR control mode after the WEGO warm up time (nominal value of 30 seconds) has elapsed.

To allow viewing and logging AFR data immediately after engine start, turn the ignition switch on but leave the run/stop switch in the stop position. Wait at least 15 seconds for the WEGO sensors to warm up and then start the engine. Monitor engine data and status with VRFI Log software.

Allow the engine to idle until it reaches normal operating temperature of 90° C or 195° F. If the engine does not start or stalls, please refer to the diagnostic tips at the end of this section.

Monitor front and rear cylinder AFR and BLM, engine temperature, and IAC values. Keep notes on your observations of these values. After 30 seconds, the system should be operating in closed loop and maintaining the desired idle AFR (nominal value of 13.8). The BLM values should remain within the range of 80-120%. The IAC value should slowly go down as the engine reaches operating temperature and requires less idle air.

BLM values below 100% indicate that the VRFI is removing fuel in closed loop to correct a rich condition. BLM values above 100% indicate that the VRFI is adding fuel in closed loop to correct a lean condition.

If the BLM values go below 80% or above 120% anytime during the warm up period, the system is running out of adjustment range and the idle cells in the Alpha-N fuel table should be edited before proceeding with further tuning.

Download the current setup with PC Link VRFI software and use the Edit 3D Table – Alpha-N Table command to edit the idle cells in the Alpha-N fuel table. Depending on engine temperature, IAC value and idle RPM, the VRFI will be using the cells in the 1,000, 1,250, 1,500 and 1,750 RPM columns and the 0%, 2.5% (IAC between 50-80), and 5% TPS (IAC above 80) rows. You can select all these cells, right click the mouse, and then use the Modify command on the pop-up menu. Add a percentage corresponding to the BLM error. For example, if the worst case BLM value noted was 120%, add 20% fuel by entering +20% (not +20). Likewise, if the worst case BLM value was 80%, subtract 20% fuel by entering -20%. Remember to use the Save Table Edits to Buffer command after editing the table. Then use the Edit 3D Table – BLM Tables – Reset BLM Tables command to reset all BLM values to 100%. Save the edited setup file to disk and upload it to the VRFI.

As mentioned above, the IAC value should slowly go down as the engine reaches operating temperature. The IAC value should drop to near the nominal value of 30 (as set under basic module parameters). If the IAC value stays above 40 or drops below 25, the idle stop screw will require adjustment before proceeding with further tuning.

Some “trial and error” adjustments to the idle stop may be required to obtain the nominal IAC value. Turn the engine off and let it cool down between adjustments. If the IAC position is too high, turn the idle stop screw clockwise in ½ turn increments between trials to allow more air to flow through the throttle blade(s). **Please note that if you make any adjustment to the idle stop screw, you must also recheck (and possibly re-adjust) the idle TPS setting as explained in the previous section.**

CAUTION: Failure to perform required TPS and idle stop adjustments is a leading cause of installation problems requiring tech support.

After making any required edits and idle adjustments, repeat the start test and allow the engine to reach normal operating temperature. **Make sure the engine runs for at least 5 minutes and the status display shows warm closed loop operation – otherwise BLM values will not be saved.**

The idle tuning step is complete when BLM values stay within the range of 85-115% during the warm up phase and the IAC value is within the range of 25-40 once the engine reaches normal operating temperature. If these criteria cannot be met, please contact our tech support before proceeding.

For additional idle tuning information, please download the TCFI Gen 4 Idle Tuning Tech Note.

Diagnostic tips if the engine does not start:

1. Verify that the VRFI is properly installed and set up, that the battery is fully charged, that the IAC system is initialized (cycle run/stop switch), and that the engine is not flooded from excessive priming caused by repeatedly cycling the run/stop switch during setup. Disconnect the fuel pump relay and crank the engine to clear flooding.
2. Try the following starting procedure: set the run/stop switch to run, wait until the fuel pump stops running, slightly open the throttle, and then press the starter switch. If the engine starts, the problem is insufficient air caused by an incorrect

idle stop setting. Try turning the idle stop screw clockwise in ½ turn increments between trials.

3. Ether starting spray can be used as a diagnostic aid. Try starting the engine after an application of ether spray. If the engine starts and momentarily runs at an abnormally high idle RPM, the problem is excessive air caused by an incorrect idle stop setting. Try turning the idle stop screw counterclockwise in ½ turn increments between trials. Otherwise, if the engine starts and runs at a normal idle RPM, the problem is insufficient fuel. Try increasing the priming and cranking fuel values by 10-20%. Download the current setup with PC Link VRFI software and use the Edit 2D Table – ET Based Priming Fuel Table and ET Based Cranking Fuel Table commands. Select all cells, right click the mouse, use the Modify command on the pop-up menu, and enter +10% (not +10). Remember to use the Save Table Edits to Buffer command after editing each table. Save the edited setup file to disk and upload it to the VRFI. Retest and repeat if additional fuel seems to be required.
4. If larger fuel injectors were installed, cranking and priming fuel values may need to be decreased. Try decreasing the priming and cranking fuel values by 20%. Download the current setup with PC Link VRFI software and use the Edit 2D Table – ET Based Priming Fuel Table and ET Based Cranking Fuel Table commands. Select all cells, right click the mouse, use the Modify command on the pop-up menu, and enter -20% (not -20). Remember to use the Save Table Edits to Buffer command after editing each table. Save the edited setup file to disk and upload it to the VRFI.
5. Try re-installing the stock ECM. Cycle the run stop switch to re-initialize the IAC system. If the engine does not start with the stock ECM, there may be an underlying problem that requires correction. If the engine starts with the stock ECM but not the VRFI, please contact our tech support for assistance.

Diagnostic tips if the engine stalls:

1. If the engine momentarily starts, runs for several revolutions (less than 2 seconds), and then stalls, priming and cranking fuel values may be insufficient to build up the required fuel film in the intake manifold. Try cycling the run/stop switch several times to add additional priming fuel before starting the engine. If the engine starts normally, you have confirmed that more fuel is required. Try adding 10-20% more priming and cranking fuel as explained in Paragraph 2 in the preceding section.

-
2. If the engine stalls after running for several seconds, observe AFR values. To do this you must allow the WEGO sensors to warm up for at least 15 seconds before starting the engine. You can observe data in real time or download data logged using VRFI Log. For best results, select the 10 samples/sec download option. In most cases, the problem is caused by excessively lean AFR. Based on observed AFR values, make appropriate corrections to the idle cells in Alpha-N table. If the AFR is lean, try adding 10-20% fuel (use the procedure explained on page 6). If this does not solve the problem, please contact our tech support for assistance.
 3. In some cases, changes to the cold start enrichment tables may be required. The new firmware and software support independent ET (engine temperature) based front and rear cylinder cold start enrichment tables. To allow viewing and logging AFR data immediately after engine start, turn the ignition switch on but leave the run/stop switch in the stop position. Wait at least 15 seconds for the WEGO sensors to warm up and then start the engine. Monitor engine data and status with VRFI Log. Download the logged data. Compare the front and rear AFR values after engine start to determine if adjustments are required. Refer to the TCFI Gen 4 Idle Tuning Tech Note for more details.

AUTO-TUNING

The closed loop auto-tuning process consists of operating the motorcycle through a wide range of loads and speeds while periodically monitoring progress using the PC Link VRFI software. Long rides at constant speed and load are of no value. The best technique is to very slowly accelerate through the useable RPM range in every gear, allowing several seconds of operation in each RPM and throttle position based cell. Also operate the motorcycle at various fixed speeds likely to be encountered during normal riding. For safety reasons, wide open throttle runs should be done on a closed course.

We recommend auto-tuning under actual riding conditions. If this is not possible, you can auto-tune on a load control dyno. Vehicle and engine manufacturers perform calibrations on dyno systems equipped with computer controlled variable speed fan drives that closely match the air velocity at the front of the engine to roll speed. Dynojet load control systems widely used for aftermarket tuning lack this level of sophistication and are incapable of simulating realistic operating conditions over an extended period of time. We have

also observed considerable problems with maintaining steady RPM values during load control on Dynojet equipment. If you plan to auto-tune on a dyno, please contact our tech support for details.

If AFR values appear very lean (above 14.5), we suggest that you edit the Alpha-N table to add 15-20% fuel to all cells except idle cells before proceeding. Auto-tuning works best if you start with a slightly rich Alpha-N table. Download the current setup with PC Link VRFI software and use the Edit 3D Table – Alpha-N Table command. You can select groups of cells, right click the mouse, use the Modify command on the pop-up menu, and enter +15% (not 15). Remember to use the Save Table Edits to Buffer command after editing each table. Save the edited setup file to disk and upload it to the VRFI

After 1-2 hours of engine operation, download the current setup with PC Link VRFI software and use the Edit 3D Table – BLM Tables – Edit Front and Edit Rear BLM Table commands to examine the BLM tables. Cells that are shaded red indicate that the system has run out of correction range. Then use the Apply Front and Apply Rear BLM Table commands to automatically correct the Alpha-N fuel table and front cylinder trim table. This also resets all the BLM values back to 100% and allows auto-tuning to continue. Save the edited setup file to disk and upload it to the VRFI.

Auto-tuning is a statistical process. The longer the operating time, the greater the probability that more cells will be covered. However, even a varied operating cycle can miss some cells. After you use the Apply BLM Table commands, take some time to examine the modified Alpha-N and front cylinder trim tables. Unless your engine has some unusual camshaft and exhaust interactions, the tables should appear smooth (with gently rising slopes). If you spot sharp spikes or dips, these cells have probably been missed during auto-tuning and will require some manual edits to smooth them into the surrounding terrain.

The Alpha-N table represents percent injector pulse width (fuel flow) before correction for BLM, front cylinder trim, barometric pressure, intake temperature, and cold start enrichment. You can use the following guidelines to smooth the Alpha-N table:

1. At part throttle (low TPS%), Alpha-N values in each row will tend to decrease as RPM increases (because the throttle is choking air flow).
2. At wide open throttle, Alpha-N values in each row will tend to follow the engine torque curve.
3. In any given RPM column, Alpha-N values must always increase with TPS.

The front cylinder trim table may appear more complex and irregular, with peaks and valleys corresponding to gas flow interactions within the intake and exhaust system. However, very sharp spikes and dips may require some smoothing.

If you edit the Alpha-N or front cylinder trim table to smooth out values, remember to use the Save Table Edits to Buffer command after editing each table. Save the edited setup file to disk and upload it to the VRFI.

Continue to operate the motorcycle under varying conditions for another 1-2 hours. Then repeat the process of downloading setup data, examining the BLM tables, using the Apply BLM Table commands, smoothing the Alpha-N and front cylinder trim tables, saving, and uploading back to the VRFI as previously described.

Continue this auto-tuning process until most of the BLM cells remain in the 90-110% range.

If spark knock is noted under wide open throttle or throttle roll-on, use PC Link VRFI software to edit the ignition advance table and reduce the ignition advance 3-5 degrees under the conditions that cause spark knock. Using the VRFI Log software to examine engine data may be very helpful for determining exactly what manifold pressure and RPM values were encountered. A common error is to assume spark knock only occurs at high MAP (manifold absolute pressure) values. Large displacement engines are prone to spark knock at relatively low MAP values during throttle roll-on. You may need to reduce the ignition advance throughout the entire MAP range.

CAUTION: During auto-tuning, BLM values are only saved if the engine reaches 75° C (170° F) and runs for at least 5 minutes. This is set by warm engine temperature and engine warm-up time parameters (refer to page 26).

FUEL INJECTOR SIZING

Accepted engineering practice is to use the smallest possible injectors (in terms of flow) for best control at idle and part throttle. With the dual independent runner intake on the VRSC engine, the fuel injectors can be run up to 80% duty cycle. Stock Delphi® injectors are rated at approximately 4.8 gm/sec flow and should be capable of delivering sufficient fuel for engines rated up to 150 HP.

LARGE DISPLACEMENT ENGINES

For large displacement engines and/or higher flow injectors, you can modify the 1250CC setup files by editing the module parameters and entering appropriate values for the estimated engine horsepower and injector flow rate.

Engines over 1250CC may require additional tuning procedures, such as increases to the priming and cranking fuel tables. Please contact our tech support for details.

IDLE TUNING CONSIDERATIONS

Some large displacement engines with high overlap/long duration camshafts may not idle properly at the nominal settings used in the standard setup files. You may have to increase the idle RPM to a higher value and enrich the idle to 12.5-12.8 AFR.

Download the current setup with PC Link VRFI software and use the Edit 2D Table – ET Based Idle RPM command to increase the idle RPM. Do not decrease values at the left of the table (corresponding to a cold start condition) that are already higher than your desired idle RPM. If you significantly increase idle RPM, you may also have to make corresponding edits to the ET Based IAC Position table. Please contact our tech support for details.

Then use the Edit 3D Table – AFR Table command and change the applicable idle cells (1,000 - 1,750 RPM at 0-5% TPS) to the desired AFR value. Remember to use the Save Table Edits to Buffer command after editing each table. Save the edited setup file to disk and upload it to the VRFI.

For additional idle tuning information, please download the TCFI Gen 4 Idle Tuning Tech Note.

DYNO TUNING CONSIDERATIONS

Auto-tuning using the procedures listed on pages 7-8 will get you within a few horsepower of the maximum that the engine can deliver. If you decide to do dyno tuning for maximum power, you can experiment with wide open throttle (WOT) ignition timing and AFR. **Please pay careful attention to the following dyno tuning considerations:**

1. **Only edit the ignition advance and AFR tables.** Don't edit any other tables (never make any changes to the BLM or Alpha-N tables once auto-tuning is completed). The usual range for WOT ignition timing at 4,000-9,000 RPM is about 27-31 degrees BTDC. The usual range for WOT AFR is about 12.5-12.8. Some engines may require a

richer mixture, possibly down to 11.5, to avoid detonation problems.

2. **The VRFI should be operated in closed loop.** Make sure that the engine is warmed up (coolant temperature is in the 80-100° C or 175-21° F range) before doing a run and that engine status in VRFI Log shows closed loop operation. If you have made any table edits, allow one run for auto-tuning before capturing data.
3. **Inadequate air flow for engine cooling is a major problem with many dyno systems.** Always let the engine cool off between dyno runs. The use of a separate heavy duty industrial grade fan capable of generating at least 50+ MPH air velocity at the front of the engine is recommended. You can measure the air velocity with a handheld anemometer such as Extech P/N 45118 available from Grainger.
4. **Use the VRFI data logging capability.** Always download data with VRFI Log software at the end of every run and study the results (use the 10 samples/sec download option). Check engine and air temperatures, throttle position, manifold pressure, and AFR. VRFI Log is a very powerful tool that can help you identify potential problems that may be affecting engine performance. Inconsistent dyno test results are often the result of thermal problems (engine temperature variations or hot soak effects).
5. **Dyno exhaust sniffer limitations.** Some of the older sniffers monitored CO and CO₂. These systems are so slow and inaccurate that they should be totally disregarded. Modern sniffers from Dynojet and Horiba use a wideband sensor similar to the WEGO sensor. These sniffers are still subject to erroneous lean readings caused by reversion of atmospheric oxygen if the probe cannot be inserted past the baffles in the exhaust. Sensor degradation caused by leaded racing gas is a common occurrence. Another problem is sampling delay due to the long hose between the sniffer tip and actual sensor. The bottom line is to trust your WEGO sensors and disregard any errant readings from an exhaust sniffer.

ENGINE TUNING GUIDELINES

Higher AFR values correspond to a leaner (less fuel) condition. The practical operating range for most engines using gasoline fuel is from approximately 11.5 to 14.7 AFR. Combustion of a stoichiometric mixture (exactly enough air to burn all the fuel) results in 14.7 AFR indication. Automotive engines with catalytic

converters operate near 14.7 AFR during cruise and idle. Air-cooled motorcycle race engines usually require a richer mixture to limit cylinder head temperature and prevent detonation. Table 1 lists recommended AFR values for race engines without emission controls.

Table 1 – Recommended AFR Values

Operating Mode	Recommended AFR
Cold Start (first 30 sec)	11.5-12.5
Idle	12.8-13.8
Part Throttle Cruise	13.0-14.1
Wide Open Throttle	12.5-12.8 (values down to 11.5 may be used to reduce detonation)

EXHAUST CONSIDERATIONS

The use of a WEGO system for closed loop fuel control places constraints on the choice of exhaust system. The WEGO system may give inaccurate results in certain situations:

Exhaust reversion. Reversion is the term for a negative pressure wave that can suck ambient air back into the exhaust and cause an erroneous lean AFR indication. Reversion effects will be most noticeable at idle, part throttle low RPM cruise, and decel.

Open drag pipes suffer from reversion effects. Please note that if you use drag pipes or other open pipes, auto-tuning may not be possible at idle or part throttle due to reversion effects. In this case, you have three options:

1. Modify the exhaust to allow auto-tuning at idle and part throttle by adding a restriction such as the washers shown in Figure 1 or some other type of baffling. For race applications, you can remove the restriction after auto-tuning the idle and part throttle cells and then lock out closed loop operation by using the special value 0 in the BLM tables for these cells.
2. Use a rubber hose to extend the exhaust length during auto-tuning at idle and part throttle. For more information, please contact our tech support.
3. Manually tune the fuel tables for idle and part throttle cells. This involves trial and error and is not recommended. Closed loop operation in idle and part throttle cells must be locked out by using the special value 0 in the BLM tables for the affected cells.

You can reduce reversion effects in open drag pipes and mufflers without restrictive baffles with the modification shown in Figure 1. Use washers with an OD that is 2/3 to 3/4 the ID of the pipe (for example, 1-1/2" OD washers are suitable for pipes with an ID of 2" to 2.25"). Weld 1/4-20 socket head cap screws to the washers as shown. Drill holes at the bottom of the pipes about 2" from the end and use decorative acorn nuts to secure the washer assemblies. We suggest that you use stainless steel hardware.

The washers will reflect positive pressure waves that will cancel out the negative pressure waves reflecting from the end of the pipes. You can turn the washers just like throttle blades to provide more or less restriction. Dyno tests will show a significant increase in midrange torque and a small drop in top end horsepower as the restriction is increased.

WARNING: If you can insert a broomstick through the mufflers, you have the equivalent of open drag pipes and the WEGO sensors will not read accurate AFR values, except at wide open throttle.

CAUTION: Insistence on using an inappropriate exhaust and consequent failure of auto-tuning is a major cause of installation problems requiring tech support.

Figure 1 – Exhaust Mod to Reduce Reversion



Excessive scavenging. Tuned exhausts in combination with a high overlap camshaft profile can pull unburned air and fuel mixture through the cylinder into the exhaust and cause an erroneous rich AFR indication. This problem has been noted with some aftermarket 2-into-1 systems.

Misfiring. If the AFR is so rich that the engine misfires, high levels of oxygen will remain in the exhaust gas and result in an erroneous lean indication.

HOT STARTING PROBLEMS

The VRFI module uses an improved starting algorithm that includes a programmable cranking delay. The VRFI module is shipped with a zero cranking delay: it fires on the first recognized compression stroke.

The OE VRSC camshafts include automatic compression releases. If you install, aftermarket camshafts without this feature, cylinder head compression releases may be required. In this case, best starting results will be obtained by programming the VRFI module for a 1-2 revolution cranking delay. This can be done by means of the PC Link VRFI software.

SPARK KNOCK PROBLEMS WITH HIGH COMPRESSION ENGINES

Spark knock problems may be encountered with high compression engines. If engine parts were "mixed and matched" from different suppliers, the actual compression ratio may differ substantially from the expected value. You cannot estimate compression ratio with cranking compression tests, as camshaft timing usually causes an erroneous low reading.

To accurately calculate compression ratio, you must measure the combustion chamber volume and use the formula:

$$\text{Compression Ratio} = \frac{\text{Head cc} + \text{Deck cc} + \text{Cylinder Volume}}{\text{Head cc} + \text{Deck cc}}$$

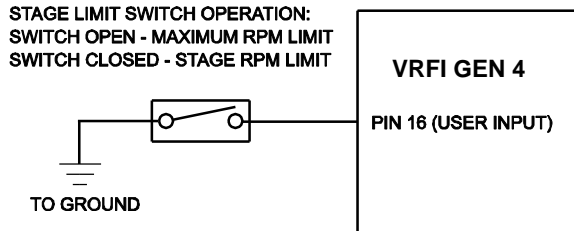
With a stock compression ratio of 11.3:1, the V-Rod is at the practical limit for 92-93 octane pump gas. Any higher compression ratio will require high octane racing gas or retarding the ignition timing to the point where more power is lost from the retarded timing than is gained from the higher compression.

If spark knock is encountered during operation, you can use the VRFI Log software to download data and examine the operating conditions (RPM and manifold pressure) where spark knock occurred. You can then make appropriate reductions to the ignition advance table. Large displacement, high compression engines are prone to spark knock at relatively low MAP values during throttle roll-on. You may need to reduce the ignition advance throughout the entire MAP range.

USER FUNCTIONS

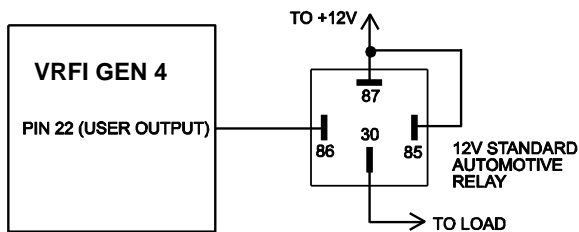
The VRFI user input on pin 16 can be connected for a stage RPM limit function as shown in Figure 2. The stage limit switch must be normally open. You can use a microswitch attached to the clutch lever. When the clutch lever is pulled in, the switch contacts should close to activate the stage RPM limit. Refer to the User Functions section on pages 28-29 for details on programming the stage RPM limit.

Figure 2 – Stage Limit Switch Wiring Diagram



The VRFI user output on pin 22 can drive a standard automotive relay connected as shown in Figure 3. When the user output is active, +12V power is applied to the load. Refer to the User Functions section on pages 28-29 for details on programming the user output.

Figure 3 – User Output Relay Wiring Diagram



CUSTOM BIKE CONSIDERATIONS

The VRFI can be used for custom bike applications. The VRFI also has special features to accommodate aftermarket speedometers and tachometers, even on 2004 and later H-D® models with the J1850 data bus. The VRFI does not require the presence of a turn signal/security module (TSM/TSSM). However, it does require all the engine sensors and actuators used with a standard VRSC application, including a vehicle speed sensor (VSS). Prior to installation on a custom bike, we suggest that you contact our tech support. Improper wiring connections, with missing or incorrect signals, are the most common problem encountered with custom bike applications.

Like the Delphi® module, the VRFI sends RPM data to the instrument module over the J1850 data bus for 2004 and later models. The VRFI also has a tach

signal available on pin 3 of the 36 pin ECM connector. This is a one pulse per revolution (PPR) 12 volt square wave signal with 50% duty cycle that is compatible with aftermarket tachometers and other RPM activated accessories such as shift lights.

The vehicle speed sensor (VSS) signal is connected direct to pin 33 on the ECM. Speed and distance data is sent on the J1850 data bus to the speedometer and TSM/TSSM. If you plan to install an aftermarket speedometer, you must maintain the VSS signal to the ECM. You can try connecting the VSS input on the aftermarket speedometer to the existing VSS signal on pin 33 (leave the existing VSS ground and power connections undisturbed). After completing the hookup, you should test drive the motorcycle, download data with VRFI Log software, check VSS data, and verify that the ECM is still receiving a valid VSS signal. If the speedometer does not function with this hookup, it is not compatible.

TECH SUPPORT

If you require tech support for tuning issues, we will ask you to email us both the current setup file (downloaded by means of PC Link VRFI) and a data logging file (downloaded by means of VRFI Log) that shows the problem. The data logging files are large and tend to be corrupted when attached to an email. **You must use an archiving program such as PKZIP or WinZip to compress the files prior to attaching them to an email.** You can send email to techsupport@daytona-twintec.com. Please make sure that you include your full name, phone number, complete information about the engine setup, and a detailed description of the problem. We suggest that you call us first to discuss the situation.

UPGRADES AND KNOWN ISSUES

The VRFI controller can be upgraded in the field by the user. Operating firmware is stored in FLASH memory and new firmware can easily be uploaded by means of the USB interface cable. We suggest you periodically check our website at www.daytona-twintec.com for upgrades to the VRFI firmware and accompanying PC based software.

As of the shipment date, there are no known issues other than those listed below.

Purge solenoid valve. The purge solenoid valve (output on pin 22) used on California models is not supported. With the current VRFI firmware, pin 22 is a user output as explained above. If you have a California model, please contact our tech support before proceeding with installation.

Possible firmware corruption during dyno test. We suggest that you do not connect the USB interface to any PC running Dynojet WinPEP software. Use a separate PC, such as a laptop with isolated ground. There appears to be a serial port conflict or noise issue from the Dynojet ignition pickup.

ENGINE DIAGNOSTICS

The VRFI Gen 4 version has extensive diagnostics. When the ignition switch is first turned on, the check engine LED illuminates. The LED goes out when the system initialization is complete.

If a diagnostic fault is detected while the engine is running, the LED will illuminate. Diagnostic codes can be read and cleared by means of the speedometer (same as with the OE ECM) or VRFI Log software. Most of the diagnostic codes are the same as those used by H-D® and the H-D® Electrical Diagnostic Manual for your model should be employed as a primary troubleshooting reference. Certain diagnostic codes that are unique to the VRFI or require special consideration are listed below:

P0373 CKP Signal Lost. This code will appear if the engine stalls. Customers are often confused about the meaning of the term “trips” associated with codes, especially P0373. This is an industry standard terminology. If code P0373 shows 40 trips, it means that the code was set 40 engine start cycles ago, not that the code has been set 40 times and that the crankshaft position sensor is defective.

P0122 TPS Low or P0123 TPS High. If these codes appear on a new installation, the TPS idle adjustment is probably incorrect. Refer to page 4 for details.

P0505 Loss of Idle Speed Control. If this code appears on a new installation, the throttle body idle stop setting is probably incorrect. Refer to page 4 for details.

P0132 Rear Oxygen Sensor High, P0134 Rear Oxygen Sensor Low/Open, P0152 Front Oxygen Sensor High, or P0154 Front Oxygen Sensor Low/Open. These codes indicate a problem with the WEGO IIID unit. P0134 and/or P0154 will be set if the WEGO signal connection (white and blue wires) or WEGO power is lost. These codes may also be set if a Bosch sensor fails or becomes contaminated by leaded gasoline.

REINSTALLING THE DELPHI® CONTROLLER

If you reinstall the Delphi® controller, turn the ignition key on and cycle the run/stop switch before starting the engine. This initializes the idle air control motor. With the exception of models with OE oxygen sensors, removal of the white and blue WEGO signal wires and green PC link jumper wire is not required. For models with OE oxygen sensors, you must remove the WEGO white and blue wires and reinstall the original oxygen sensor wires at pins 8 and 23.

TROUBLESHOOTING FLOWCHART

Follow the troubleshooting flowchart shown on the next page. **Please note that the troubleshooting flowchart does not relate to incorrect setup or tuning issues with new installations.** Experience has shown that most units returned for warranty are OK and another problem, such as user error including improper setup or tuning, an intermittent wire harness connection, or defective coil, fuel injector, or sensor is later identified.

VRFI Gen 4 System Troubleshooting Flowchart

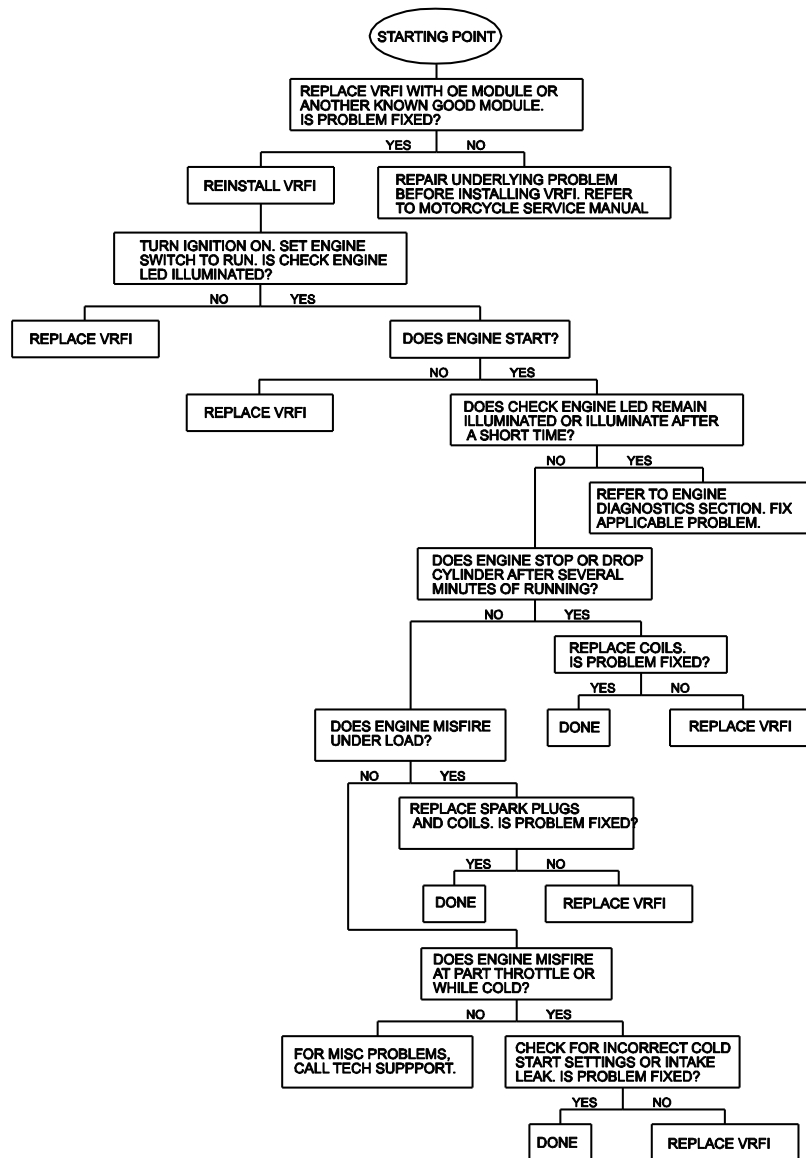


Table 2 – Setup File Listing

Filename	Description
VRFI_Setup_2002_1130CC.dat	2002 and later 1130 CC engines with stock compression, optional performance camshafts, low restriction air cleaner, and low restriction exhaust.
VRFI_Setup_2005_1250CC.dat	2005-2007 1250 CC engines with stock compression, optional performance camshafts, low restriction air cleaner, and low restriction exhaust.
VRFI_Setup_2008_1250CC.dat	2008 and later 1250 CC engines with stock compression, optional performance camshafts, low restriction air cleaner, and low restriction exhaust.

USB INTERFACE OVERVIEW

The Twin Tec USB Interface P/N 102004 shown in Figure 4 is supplied as part of the VRFI system to provide PC connectivity. The USB interface is compatible with Windows XP/Vista/7/8.

The USB Interface has a switch that selects the operating mode. The "TC88A And All Others" switch position is used for communications with the VRFI system. The unit comes with a connector that mates with the H-D® four terminal Deutsch data link connector located near the ECM.

Figure 4 – USB Interface



USB INTERFACE INSTALLATION

The Twin Tec USB interface is based on the FTDI FT232R chip and drivers that allow the unit to emulate a standard Windows RS-232 COM port. Updated Windows drivers, installation instructions and troubleshooting tips are available on the FTDI website at www.ftdichip.com. Additional information and troubleshooting tips can be found on the PC Link Tech FAQ on our website at www.daytona-twintec.com.

A new USB driver that simplifies the installation process is available. This installs as an executable file, similar to other Windows programs. The Windows Found New Hardware Wizard will then detect the USB device when it is first connected and automatically install the correct driver without the user having to browse out to the CDROM.

Before proceeding with installation, shutdown any other applications that may be running. For Windows Vista, you must disable the User Account Control (UAC) during installation. If you are not familiar with the UAC, please refer to the Vista UAC Tech Note on our website's PC Link Tech FAQ for details.

1. Make sure your USB interface is not connected to your PC.
2. Insert the Twin Tec CDROM. When the Twin Tec autorun menu appears, click on Software. Scroll

down and click on the USB Driver link. When the File Download dialog box appears, click on "Run this program from its current location." Ignore any security warnings and click on Yes to continue.

3. After installation of the driver is complete, connect the USB interface to the PC with the supplied USB cable. The Windows Found New Hardware Wizard will appear and complete installation of the USB interface.

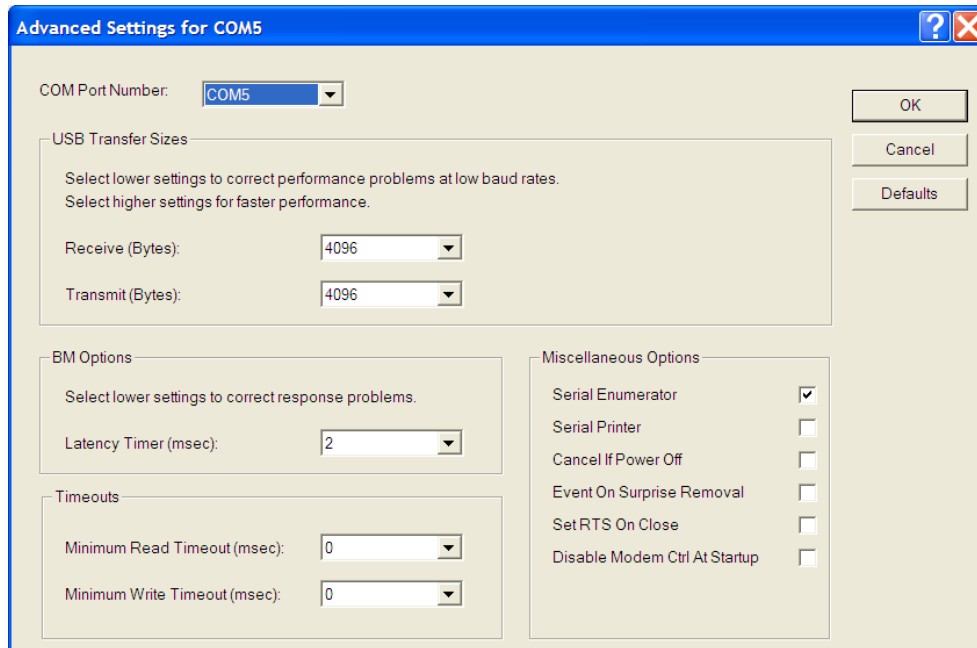
COM PORT CONFIGURATION

After completing the installation steps outlined above, you must configure the new COM port using Device Manager.

1. **Windows XP:** click Start, Settings, Control Panel, System, Hardware, and then Device Manager.
Windows Vista: click Start, Control Panel, System and Maintenance, and then Device Manager.
Windows 7/8: Click Start, Control Panel, System and Security, and then Device Manager. For more information, visit www.pcsupport.about.com.
2. Scroll down to Ports (COM and LPT). The new USB interface will appear as a USB Serial Port. Click on this new port. Click on the Port Settings tab.

3. Click on Advanced. In most cases the wizard will have installed your new USB Interface as COM5. Note the COM port number assigned for your system. For optimum performance, you should also change the BM Options Latency Timer to 2 msec as shown in Figure 5.
4. Once you have configured a COM port number for your new unit, make sure that you use this same COM port selection in the Twin Tec software by using the Port Setup command from the Communications menu.

Figure 5 – COM Port Configuration



CAUTION: If communications are interrupted during PC Link upload or you accidentally turn on the run/stop switch while the USB interface switch is in the wrong position, the TCFI may become non-responsive. To completely reset the TCFI, momentarily unplug the ECM connector.

PC LINK VRFI OVERVIEW

PC Link VRFI software runs under Microsoft Windows XP/Vista/7/8. The software allows the user to program the units with custom ignition and fuel tables and other engine parameters. **The term VRFI is used throughout this document as a generic term and refers to the VRFI Gen 4 version unless otherwise noted.**

After PC Link VRFI is launched, the main screen appears blank. You have two options for obtaining data for editing. You can open a previously saved data file by using the Open File command on the File menu or you can download data from an attached VRFI unit by using the Download Data From VRFI command on the Communications menu. Note that VRFI data files use a .dat extension. You should create a separate folder to store these files.

Once you have VRFI data, you can edit various 2D and 3D tables and engine parameters. All 3D tables are accompanied by chart displays that help visualize the data. You can also rotate the 3D chart display for a better view of a particular region. You can print the data associated with an active table or engine parameters by using the appropriate Print command from the File menu. When you open a file or download data from a VRFI module, the data is stored in a buffer memory. After editing a table, you can save the edits to this buffer memory. Once you have completed all your edits, you can save the data in buffer memory to a file or upload it back to the VRFI module by using the appropriate command from the File or Communications menu.

PC REQUIREMENTS

We recommend a laptop with Pentium processor and super VGA display (SVGA with 1024 x 768 pixel resolution) running Windows XP/Vista/7/8. Data chart display is graphics intensive and a high speed Pentium processor is recommended. Processors slower than 300 MHz will exhibit sluggish program loading and response. The PC must have a CDROM drive for program loading and an available USB port.

PC Link VRFI includes print commands that print table graphics and other engine parameters. The program has been tested with Hewlett-Packard laser and inkjet printers and Epson inkjet printers. We recommend using a color inkjet printer.

SOFTWARE INSTALLATION

The software is supplied on CDROM media or in the form of a compressed file downloaded from our website. The installation process uses InstallShield. This industry standard installer is based the new Microsoft Windows Installer service that greatly reduces potential problems such as version conflicts and allows for application self-repair. Before proceeding with installation, shutdown any other applications that may be running. For Windows Vista, you must disable the User Account Control (UAC) during installation. If you are not familiar with the UAC, please refer to the Vista UAC Tech Note on our website's Tech FAQ for details.

Use the Windows Explorer or the Run command from the Windows Start Menu to launch setup.exe in the PC_Link_VRFI folder on the CDROM or the setup.exe file downloaded from our website. InstallShield will install the software in an appropriate folder under Program Files.

Once InstallShield has completed the installation, PC Link VRFI will appear on the Windows Start Menu. You can then launch it just as you would any other Windows program.

PC Link VRFI requires the Monospace 821 BT fixed pitch printer font in order to properly align columns when printing advance tables. The Monospace 821 BT font is included in the distribution media and automatically copied to your Windows Fonts folder during installation. A backup copy is also placed in the program folder. If you accidentally delete this font, use the Install New Font command from the Fonts folder File menu. The filename associated with Monospace 821 BT is monos.ttf.

DOWNLOADING DATA

The USB interface, P/N 102004, is used for communication with the VRFI module. No additional hardware is required. The USB interface connects to the OE data link. The OE data link uses a four terminal Deutsch connector that is usually found near the VRFI unit. All models require installation of the green PC link jumper wire (supplied with the VRFI kit). The USB Interface has a switch that selects the operating mode. For communication with the VRFI, you must use the TC88A And All Others switch position.

Turn the ignition key and engine run/stop switches on to provide power to the VRFI unit. Do not start the engine.

If the VRFI unit has been removed from the motorcycle, you can do bench top programming by

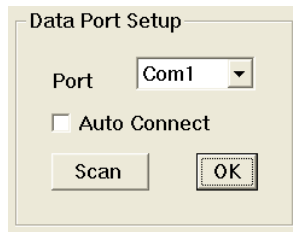
using an adapter harness (P/N TCFI-ADAPT) that includes a small 12 volt DC power supply.

The PC Link VRFI program has auto-connect capability and a COM port scan function to aid in initial setup of the communications link. You can use the Port Setup command from the Communications menu to display the dialog box shown below and select the correct COM port.

If you are not sure what COM port the USB interface has been assigned to, you can click on the Scan button to automatically detect and select the correct port. Before you do so, make sure that the USB interface has been connected to your PC and the VRFI module. Both the ignition key and engine run/stop switches must be turned on. Once the correct COM port has been selected, the program will remember this setting.

If you enable the Auto Connect check box, the program will try to connect to the VRFI every time the program is started. Please note that you must have the correct COM port selected and the USB interface connected to your PC and the VRFI module. Both the ignition key and engine run/stop switches must be turned on in order for auto-connect to work properly.

Figure 6 – Data Port Setup



Download data by using the Download Data From VRFI command on the Communications menu. The program will display the module's firmware ID.

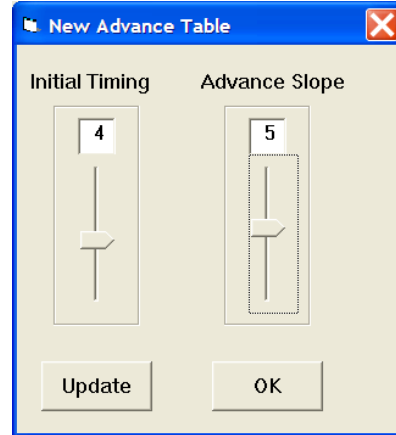
CREATING A NEW IGNITION ADVANCE TABLE

Use the New Advance Table command on the Edit, Edit 3D Table, Advance Table menu. A dialog box appears and allows you to enter initial timing and advance slope settings. Settings close to 5 result in an advance table suitable for stock engines. Use lower values for high compression engines. Each time you click on Update, the corresponding advance table is displayed.

You will find the New Advance Table command useful for generating an advance table that will serve as a starting point for further edits. When you are ready to proceed with editing, click on OK. After you have

edited the table, you must use the Save Table Edits To Buffer command from the Edit menu to save your edits to buffer memory. If you use the Close Table command from the Edit menu, all your edits are lost.

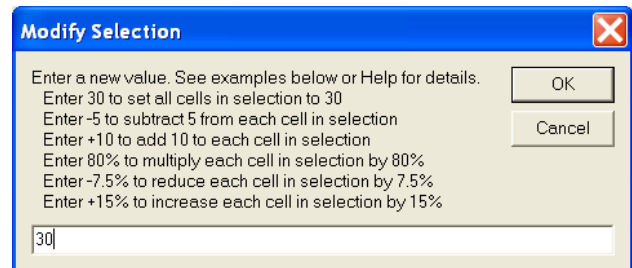
Figure 7 - Creating a New Advance Table



Editing Table Data

You can edit table data using standard Windows copy and paste operations by selecting cells and then clicking the right mouse button to pop-up the edit menu. You can select cells by dragging the mouse with left button down.

Figure 8 – Modify Command



You can also use the Modify command on the pop-up menu. When you enter a value, the presence of optional sign (+ or -) or percent (%) characters affects the outcome of the Modify command.

Chart Operations

You can rotate the 3D chart display for a better view of a particular region by dragging the mouse while holding both mouse buttons down.

PC Link VRFI is intended to be an open system and uses the Component One Chart 7.0 3D charting control. The adventurous user can experiment with the chart property pages by right clicking on the chart. Almost any chart property can be changed. Click on

the Help button for more information. If you corrupt the chart, exit and restart PC Link VRFI.

Data Export and Import by Means of Drag and Drop

You might want to export or import 3D table data to or from another application such as Microsoft Excel. Arrange the program windows so that both the source and destination are visible (one on the left side of the screen and the other on the right side seems to work best). You must be able to see the information you want to drag as well as the location where you want to drop it. To export from PC Link VRFI to Excel, use the left mouse button to select a range of data on the spreadsheet grid. Then move the mouse cursor to an edge around the selection. Hold the left mouse button down and drag the selection into Excel. Release the left mouse button on the top left cell in Excel. When importing into PC Link VRFI from Excel, use the same procedure, except that Excel requires dragging and dropping with the right mouse button.

EDITING IGNITION ADVANCE TABLE DATA

Once you have advance table data (by opening an existing data file, downloading data from a VRFI

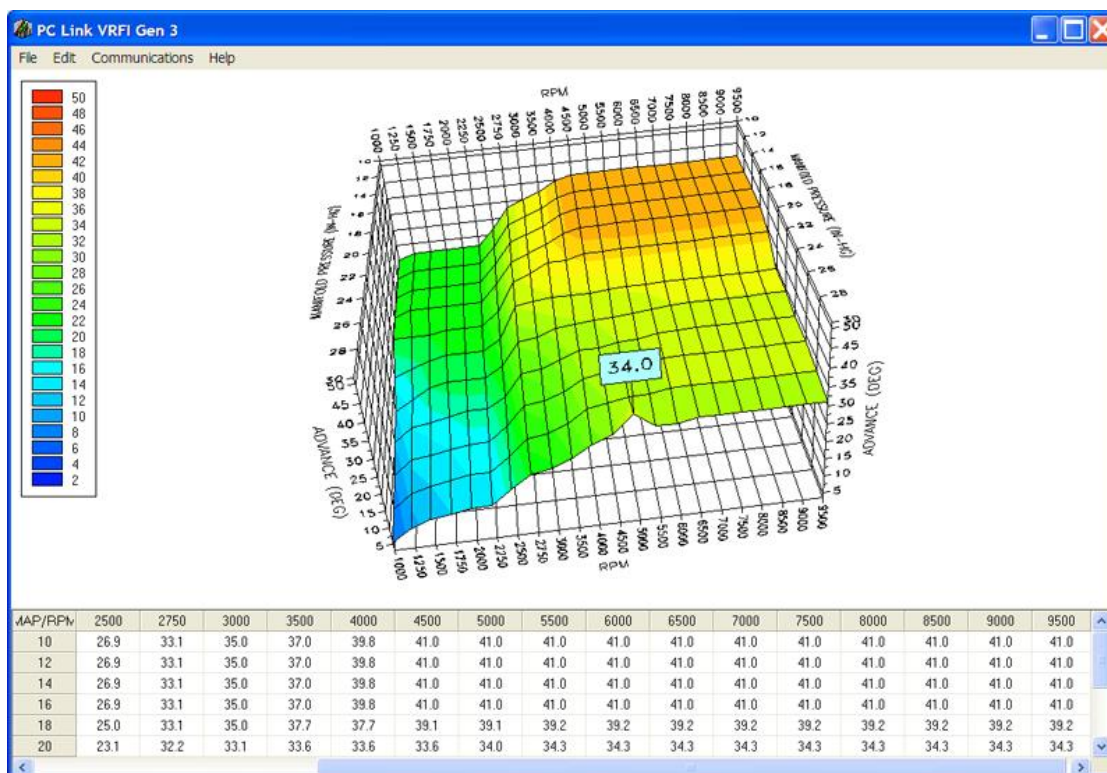
unit or creating a new table as explained in the previous section), you can edit the data by clicking on and dragging individual points on the 3D chart display or you can directly edit numeric data on the spreadsheet grid.

The table consists of 22 columns from 1,000 to 9,500 RPM and 11 manifold pressure (MAP) rows from 10 to 30 In-Hg. The 9,500 RPM advance value is used at all higher RPM levels and the 10 In-Hg MAP advance value is used at all lower MAP levels. Note that 10 In-Hg corresponds to a high vacuum deceleration or idle condition and that 30 In-Hg corresponds to wide open throttle (WOT). Advance values must be between zero and 45 degrees.

You can shift the entire advance table up or down by holding the Shift key down while dragging any point. The chart label box shows the shift in degrees. When you release the mouse button, the chart and spreadsheet grid values will be updated. Response of the chart label box may be sluggish on slower systems due to the amount of data being updated.

After you have edited the table, you must use the Save Table Edits To Buffer command from the Edit menu to save your edits to buffer memory. If you use the Close Table command from the Edit menu, all your edits are lost.

Figure 9 – Editing Advance Table Data



Editing Table Data

You can edit table data using standard Windows copy and paste operations by selecting cells and then clicking the right mouse button to pop-up the edit menu. You can select cells by dragging the mouse with left button down. You can also use the Modify command on the pop-up menu. When you enter a value, the presence of optional sign (+ or -) or percent (%) characters affects the outcome of the Modify command as shown in Figure 8.

Chart Operations

You can rotate the 3D chart display for a better view of a particular region by dragging the mouse while holding both mouse buttons down.

PC Link VRFI is intended to be an open system and uses the Component One Chart 7.0 3D charting control. The adventurous user can experiment with the chart property pages by right clicking on the chart. Almost any chart property can be changed. Click on the Help button for more information. If you corrupt the chart, exit and restart PC Link VRFI.

Data Export and Import by Means of Drag and Drop

You might want to export or import 3D table data to or from another application such as Microsoft Excel. Arrange the program windows so that both the source and destination are visible (one on the left side of the screen and the other on the right side seems to work best). You must be able to see the information you want to drag as well as the location where you want to drop it. To export from PC Link VRFI to Excel, use the left mouse button to select a range of data on the spreadsheet grid. Then move the mouse cursor to an edge around the selection. Hold the left mouse button down and drag the selection into Excel. Release the left mouse button on the top left cell in Excel. When importing into PC Link VRFI from Excel, use the same procedure, except that Excel requires dragging and dropping with the right mouse button.

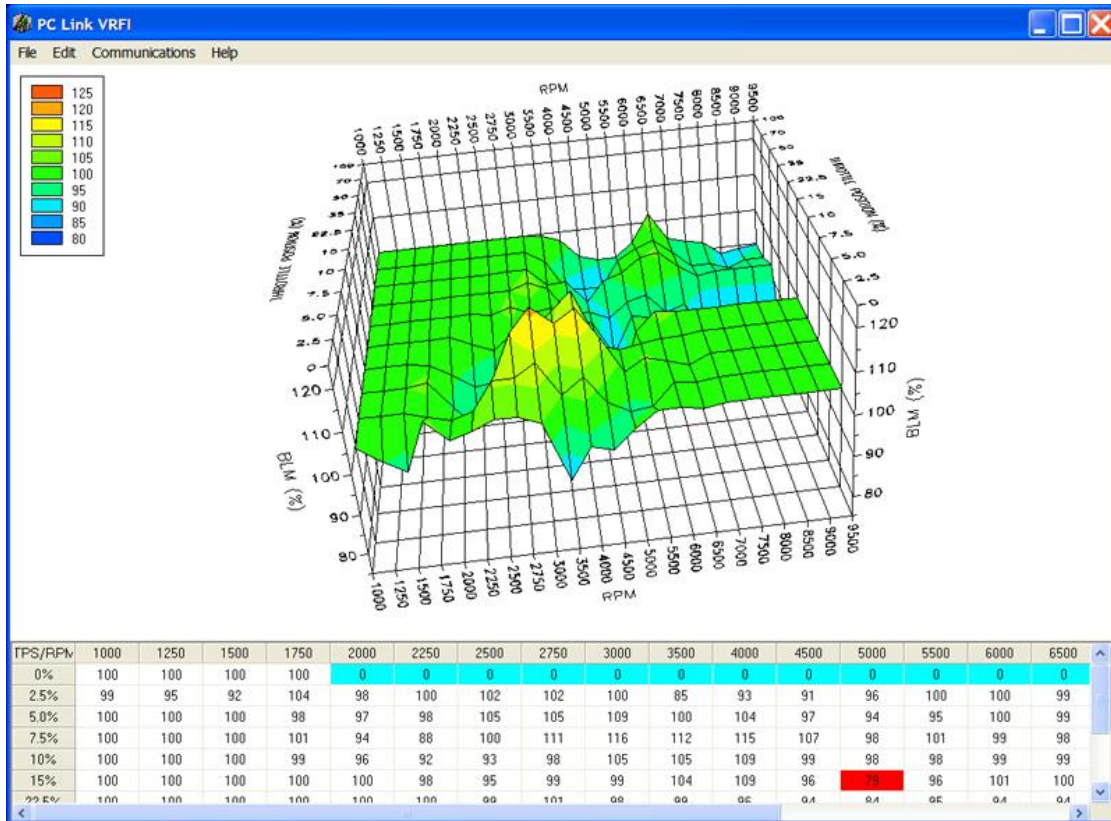
EDITING 3D TABLE DATA

In addition to the ignition advance table, there are five other 3D tables that you can edit: AFR (air/fuel ratio), Alpha-N (throttle position and RPM based fuel table), front cylinder trim (percent fuel trim for front cylinder), and front and rear BLM (block learn

multiplier). Before you can edit one of these tables you must either open a data file or download data from a VRFI unit. Due to the somewhat irregular shape of these tables, editing data by clicking on and dragging points on the chart is not feasible. You must edit the numeric data on the spreadsheet grid.

Each table consists of 22 columns from 1,000 to 9,500 RPM and 11 throttle position rows from 0% to 100%. The 9,500 RPM value is used at all higher RPM levels.

Figure 10 – BLM Table Showing Special Cells



After you have edited a table, you must use the Save Table Edits To Buffer command from the Edit menu to save your edits to buffer memory. If you use the Close Table command from the Edit menu, all your edits are lost.

From a practical standpoint, the Alpha-N table must be within about ±20% of the required values for the VRFI system to successfully correct the injector pulse width based on closed loop feedback from an exhaust gas oxygen sensor.

Alpha-N Table

The Alpha-N table is the main fuel table (Alpha-N is the technical term for throttle position and RPM). The Alpha-N table values are in percent units. The calculated base injector pulse width (determined by horsepower and injector size settings on the module parameters screen) is multiplied by the Alpha-N table value to determine the theoretical injector pulse width for a 14.7 air fuel ratio. This value is then corrected for the desired air/fuel ratio (as set on the AFR table) and BLM (block learn multiplier) to arrive at the actual rear injector pulse width.

AFR Table

The AFR (air/fuel ratio) table sets the desired air/fuel ratio under various operating conditions. The air/fuel ratio value is used in the rear injector pulse width calculation as explained above. Typical air/fuel ratios are 13.0 for idle, 13.8 for cruise, and 12.8 for wide open throttle. To prevent engine overheating, avoid lean air/fuel ratios exceeding 14.5 under cruise conditions.

Front Cylinder Trim Table

The front cylinder trim table values are in percent units. The calculated injector pulse width is multiplied by the front cylinder trim value to arrive at the front injector pulse width. Required front cylinder trim values are dependent on engine gas flow dynamics. The front cylinder trim table is automatically corrected when the Apply Front BLM Table command is executed.

BLM Table

The rear BLM (block learn multiplier) table is shown in the graphic above. BLM values are in percent units and represent a correction factor required to obtain the air/fuel ratio set on the AFR table. BLM values are updated based on closed loop feedback from the exhaust gas oxygen sensor.

Some special considerations apply to the BLM tables. BLM values are limited in range from 75% to 125%. The range limits are set on the module parameters screen. When a BLM cell nears the range limit, the cell color changes to red to alert the user that the system has just about run out of correction range and that the corresponding cell in the Alpha-N fuel table must be changed.

BLM cell values 0 and 1 command special functions and these cells are highlighted in blue. Closed loop feedback is disabled in any BLM cells with value 0. This is useful in operating areas where exhaust reversion effects may cause incorrect sensor readings. Note that most BLM tables will have the value 0 in cells corresponding to decel (RPM above idle and closed throttle) where reversion effects are most pronounced.

BLM update, but not closed loop feedback, is disabled in any BLM cells with value 1. Some BLM tables may have the value 1 in cells corresponding to idle (1,000-1,750 RPM and closed throttle). **Please refer to the TCFI Gen 4 Idle Tuning Tech Note for more information on this subject.**

After several hours of engine operation, examine the BLM (block learn multiplier) tables. If you see red cells on a BLM table, you can use the corresponding Apply BLM Table command (on the BLM Table submenu) to automatically correct the Alpha-N fuel table and front cylinder trim table. After running the Apply BLM Table command, the BLM table cells will return to 100%. Please remember to upload the data back to the VRFI unit in order for the changes to take effect.

The Reset BLM Table command on the BLM Table submenu resets all BLM cells to 100%.

Editing Table Data

You can edit table data using standard Windows copy and paste operations by selecting cells and then clicking the right mouse button to pop-up the edit menu. You can select cells by dragging the mouse with left button down. You can also use the Modify command on the pop-up menu. When you enter a value, the presence of optional sign (+ or -) or percent (%) characters affects the outcome of the Modify command as shown in Figure 8.

Chart Operations

You can rotate the 3D chart display for a better view of a particular region by dragging the mouse while holding both mouse buttons down.

PC Link VRFI is intended to be an open system and uses the Component One Chart 7.0 3D charting control. The adventurous user can experiment with the chart property pages by right clicking on the chart. Almost any chart property can be changed. Click on the Help button for more information. If you corrupt the chart, exit and restart PC Link VRFI.

Data Export and Import by Means of Drag and Drop

You might want to export or import 3D table data to or from another application such as Microsoft Excel. Arrange the program windows so that both the source and destination are visible (one on the left side of the screen and the other on the right side seems to work best). You must be able to see the information you want to drag as well as the location where you want to drop it. To export from PC Link VRFI to Excel, use the left mouse button to select a range of data on the spreadsheet grid. Then move the mouse cursor to an edge around the selection. Hold the left mouse button down and drag the selection into Excel. Release the left mouse button on the top left cell in Excel. When importing into PC Link VRFI from Excel, use the same procedure, except that Excel requires dragging and dropping with the right mouse button.

EDITING 2D TABLE DATA

There are eleven 2D tables that you can edit. Before you can edit one of these tables you must either open a data file or download data from a VRFI unit. Each table consists of 17 columns with the upper row corresponding to the independent variable (throttle

position, engine temperature, elapsed time, or IAC (idle air control) position. You can edit the numeric data corresponding to the dependent variable on the lower row of the spreadsheet grid. A typical 2D table is shown below. Some of the engine temperature cells are highlighted in red. These red cells correspond to invalid sensor readings.

After you have edited the table, you must use the Save Table Edits To Buffer command from the Edit menu to save your edits to buffer memory. If you use the Close Table command from the Edit menu, all your edits are lost.

TPS Transfer Function Table

This table determines the relationship between TPS sensor volts and TPS percent used in various 3D tables such as the Alpha-N table. Note that the table starts at .39 volts, which is the nominal TPS sensor output with the throttle closed at idle. **The provided setup files have the proper TPS transfer function and you should never change these values unless given specific instructions from tech support.**

Delta TPS Fuel Multiplier Table

This table consists of a fuel multiplier (percent units) that is a function of delta throttle position. Delta throttle position means change in throttle position. Fuel multipliers greater than 100% for positive delta throttle position correspond to an acceleration enrichment (similar effect to an accelerator pump on a carburetor). Fuel multipliers less than 100% for a negative delta throttle position correspond to a deceleration enrichment (useful for reducing exhaust back fire).

IAC Based TPS Adder Table

This table consists of a throttle position factor corresponding to IAC position. In an Alpha-N fuel control, IAC position must be considered. A high IAC position (high idle air flow) is the same as opening the throttle. In general the values in this table need only be edited if an aftermarket throttle body with significantly greater air flow is used. In this case, the table values should be reduced slightly.

Figure 11 – Typical 2D Table

ET (deg C)	-16	0	16	32	48	64	80	96	112	128	144	160	176	192	208	224	240
Idle RPM	1602	1500	1398	1301	1250	1199	1199	1199	1199	1199	1199	1199	1199	1199	1199	1199	1199

ET Based Priming Fuel Table

This table consists of an injector pulse width that is a function of engine temperature. The priming pulse occurs once on the initial ignition switch on event. Some of the engine temperature cells are highlighted in red. These red cells correspond to invalid sensor readings.

ET Based Cranking Fuel Table

This table consists of an injector pulse width that is a function of engine temperature. The cranking pulse width is used during engine start. Some of the engine temperature cells are highlighted in red. These red cells correspond to invalid sensor readings.

Time Based AFR Cold Start Enrichment Table

This table consists of an AFR cold start multiplier (percent units) that is a function of elapsed time since engine start. This AFR cold start enrichment is applied to the values in the 3D AFR table. The AFR values are multiplied by the time based AFR cold start enrichment and by the ET based AFR cold start

enrichment. For example, assume that the AFR value in a given cell is 14.0 and that the time and ET based AFR cold start enrichment values are 50% and 15% respectively. The actual AFR value for that cell then becomes 13.0 (14/(1 + 0.5 x 0.15)). The time based AFR cold start enrichment should always taper off from 100% at zero elapsed time and must reach 0% at the maximum value of elapsed time (251 seconds). In general, the values in this table will be correct for most applications and should not be changed without consulting tech support.

ET Based AFR Cold Start Enrichment Table

This table consists of an AFR cold start multiplier (percent units) that is a function of engine temperature. This table does double duty for hot soak enrichment. Some of the engine temperature cells are highlighted in red. These red cells correspond to invalid sensor readings. In general, the values in this table will be correct for most applications and should not be changed without consulting tech support.

Time Based Fuel Cold Start Enrichment Table

This table consists of a fuel cold start multiplier (percent units) that is a function of elapsed time since engine start. The overall fuel cold start enrichment is determined as follows: calculated injector pulse width for each cylinder is multiplied by the time based fuel cold start enrichment and by the appropriate ET based front or rear cylinder cold start enrichment. The overall fuel cold start enrichment is then added to the injector pulse width. For example, assume that the calculated injector pulse width is 4 msec and that the time and ET based fuel cold start enrichment values are 50% and 25% respectively. The total injector pulse width is then 4.5 msec ($0.5 \times 0.25 \times 4.0 + 4.0$). The time based fuel cold start enrichment should always taper off from 100% at zero elapsed time and must reach 0% at the maximum value of elapsed time (251 seconds).

ET Based Front and Rear Cylinder Cold Start Enrichment Table

These tables consist of a fuel cold start fuel multiplier (percent units) that is a function of engine temperature. Individual tables are used because most engines exhibit significant differences in the characteristics of the front and rear cylinders. These tables also do double duty for hot soak enrichment. Note that a significant enrichment is required at high temperatures due to reduced injector flow. Some of the engine temperature cells are highlighted in red. These red cells correspond to invalid sensor readings. You may need to edit these two tables for optimum cold start and restart after hot soak. **Please refer to the TCFI Gen 4 Idle Tuning Tech Note for more information on this subject.**

ET Based Idle RPM Table

This table consists of desired idle RPM as a function of engine temperature. The ET based IAC position (see table description above) is adjusted to maintain the desired idle RPM. Some of the engine temperature cells are highlighted in red. These red cells correspond to invalid sensor readings.

ET Based IAC Position Table

This table consists of IAC (idle air control) position as a function of engine temperature. Greater IAC values result in more idle air and higher idle speed. IAC position is continuously reduced as the engine warms up, even if the engine is not idling. Some of the engine temperature cells are highlighted

in red. These red cells correspond to invalid sensor readings.

ET Based IAC Start Adder Table

This table consists of IAC (idle air control) position as a function of engine temperature. The values represent additional air flow through the idle system during engine starting. Generally, more air is required for a hot start, especially after a hot soak. Some of the engine temperature cells are highlighted in red. These red cells correspond to invalid sensor readings.

Time Based IAC Start Adder Table

This table consists of a multiplier factor (percent units) that is a function of elapsed time since engine start. The multiplier factor is applied to the IAC start adder in order to compensate for time dependent characteristics of the throttle body after engine start, especially after a hot soak. The table values should always taper off from some initial value at zero elapsed time and must reach 0% at the maximum value of elapsed time (268 seconds). If the engine runs above the desired idle RPM for several seconds when first returning to idle after the motorcycle has been driven some distance, a higher initial multiplier value is required. For most applications, this function is not required and the table values are all zero. Do not change the table values without consulting tech support.

Editing Table Data

You can edit table data using standard Windows copy and paste operations by selecting cells and then clicking the right mouse button to pop-up the edit menu. You can select cells by dragging the mouse with left button down. You can also use the Modify command on the pop-up menu. When you enter a value, the presence of optional sign (+ or -) or percent (%) characters affects the outcome of the Modify command as shown in Figure 8.

Data Export and Import by Means of Drag and Drop

You might want to export or import 2D table data to or from another application such as Microsoft Excel. Arrange the program windows so that both the source and destination are visible (one on the left side of the screen and the other on the right side seems to work best). You must be able to see the information you want to drag as well as the location where you want to drop it. To export from PC Link VRFI to Excel, use the

left mouse button to select a range of data on the spreadsheet grid. Then move the mouse cursor to an edge around the selection. Hold the left mouse button down and drag the selection into Excel. Release the left mouse button on the top left cell in Excel. When importing into PC Link VRF1 from Excel, use the same procedure, except that Excel requires dragging and dropping with the right mouse button.

MODULE PARAMETERS

Module parameters are divided into two categories: basic parameters and advanced parameters. Module parameters control the overall operation of the VRF1 unit. Setup and calibration of the VRF1 unit will generally involve editing some of the basic parameters. Users should not modify any of the advanced parameters without first consulting tech support. Basic module parameters are displayed in a dialog box by using the Edit Basic Module Parameters command on the Edit menu.

Basic parameters include:

Closed Loop AFR Control Mode – allows BLM (block learn multiplier) table updates based on feedback from an exhaust gas oxygen sensor. Only select this checkbox if the WEGO (wide-band exhaust gas oxygen) unit is connected to the VRF1.

Continuous Barometric Pressure Update Mode – recommended for operation in mountainous terrain with elevation changes of more than 3000 feet.

Barometric pressure is continually estimated from manifold pressure sampled at specific crank angle and TPS conditions.

Enable Low Fuel Warning – you should select this option for models equipped with a speedometer that includes a low fuel warning LED.

Automatic Nominal Idle IAC Update Mode – recommended for most applications. The nominal idle IAC value (IAC steps once engine is fully warmed up and at stable idle condition) is automatically sampled and updated. Manual setting of the nominal idle IAC value may be required for some applications. For more information on this subject, please refer to the TCFI Gen 4 Idle Tuning Tech Note.

Anti-Stall IAC Mode – for problem applications where occasional engine stalling occurs when the clutch is pulled in. In anti-stall IAC mode, closed loop idle speed control is always active when engine RPM is below the target idle RPM. This may cause an unexpected increase in idle RPM if the engine is inadvertently “lugged” down below the target idle RPM. For more information on this subject, please refer to the TCFI Gen 4 Idle Tuning Tech Note.

Estimated Wheel HP at 9000 RPM – enter a reasonable estimate in order for the VRF1 to calculate the base injector pulse width. If the horsepower peak is below 9,000 RPM, use the peak value. If the estimated value is too low, the engine will initially run lean and this may interfere with auto-tuning.

Figure 11 – Basic Module Parameters Dialog Box

Injector Size – flow rate in gm/sec units. The stock VRSC injectors flow 4.82 gm/sec. If you change injectors, you must enter the correct injector size value in order for the VRFI to calculate the base injector pulse width.

Base Injector Pulse Width – in millisecond units. Please note the base injector pulse width is a calculated value that you cannot directly edit.

RPM Limit – you can enter any value from 3,000 to 10,500 RPM. Values are automatically rounded to the nearest 100 RPM.

Cranking Revs - sets the number of engine revolutions before the ignitions fires the first spark. Most engines will start best with a zero setting. Please note that a hot engine may exhibit preignition and appear to start on the first revolution even if the Cranking Revs parameter is set to a non-zero value.

Rear Cylinder Timing Offset – you can set the value over a -5 to +5 degree range. Leave the value at zero if you do not require a rear cylinder timing offset.

VSS Frequency – this parameter sets the correct speedometer and odometer scaling. An incorrect value will also affect idle RPM control and turn signal cancellation. Please refer to the following section for more details.

WEGO Warmup Time – in seconds. This parameter determines the minimum engine run time before closed loop AFR control.

Idle TPS – in percent units. This parameter determines the maximum TPS (throttle position sensor) value for closed loop idle speed control. The default value is 1.0%. Some throttle bodies may require a higher value for reliable idle speed control. For more information on this subject, please refer to the TCFI Gen 4 Idle Tuning Tech Note.

Nominal Idle IAC steps – this parameter determines the nominal IAC (idle air control) stepper motor position (value learned by system when engine is completely warmed up and at stable idle condition). For more information on this subject, please refer to the TCFI Gen 4 Idle Tuning Tech Note.

User Data – you can enter up to 32 characters of user data that will be saved in EEPROM memory. User data can contain comments or serial numbers.

Once you have entered the appropriate module parameters, click on OK to save your edits to buffer memory. If you click on Cancel, all your edits are lost. You can click on Restore Defaults to restore default values for a stock engine.

Advanced module parameters are displayed in a dialog box by using the Edit Advanced Module Parameters command on the Edit menu.

Advanced parameters include:

Warm Engine Temperature – in degree C units. This parameter determines the minimum engine (cylinder head) temperature before closed loop corrections are saved to the BLM tables. The default value is 75 degree C. Engine status changes from cold to warm once the warm engine temperature is reached and the engine warmup time has elapsed.

Engine Warmup Time – in seconds. This parameter determines the minimum engine run time before closed loop corrections are saved to the BLM tables. The default value is 260 seconds. Engine status changes from cold to warm once the warm engine temperature is reached and the engine warmup time has elapsed.

Hot Soak Temperature – in degree C units. This parameter determines the minimum engine (cylinder head) temperature before special hot soak considerations apply when the engine is turned off. The default value is 60 degree C.

Hot Soak Timeout – in seconds. This parameter determines the minimum engine off time (prior to a hot restart) before special hot soak considerations apply. The default value is 60 seconds.

Delta TPS Gain – this parameter determines the scaling of TPS values in the delta TPS based fuel multiplier table. Do not change this parameter from the default value of 5.

Enlean Decay Rate – this parameter determines the time constant of recovery from enleanment (negative delta TPS values) in the delta TPS based fuel multiplier table. Do not change this parameter from the default value of 25.

Enrich Decay Rate – this parameter determines the time constant of recovery from enrichment (positive delta TPS values) in the delta TPS based fuel multiplier table. Do not change this parameter from the default value of 20.

Minimum Injector Pulse Width – in millisecond units. This parameter affects linearity of the fuel tables at low values. Do not change this parameter from the default value of 0.1.

Idle Integrator Gain – this parameter determines the response time of closed loop idle speed control. A higher value will result in a faster response but may cause instability (oscillation). The default value is 10.

AFR Integrator Gain – this parameter determines the response time of closed loop AFR control. A higher value will result in a faster response but may cause instability (oscillation). The default value is 30.

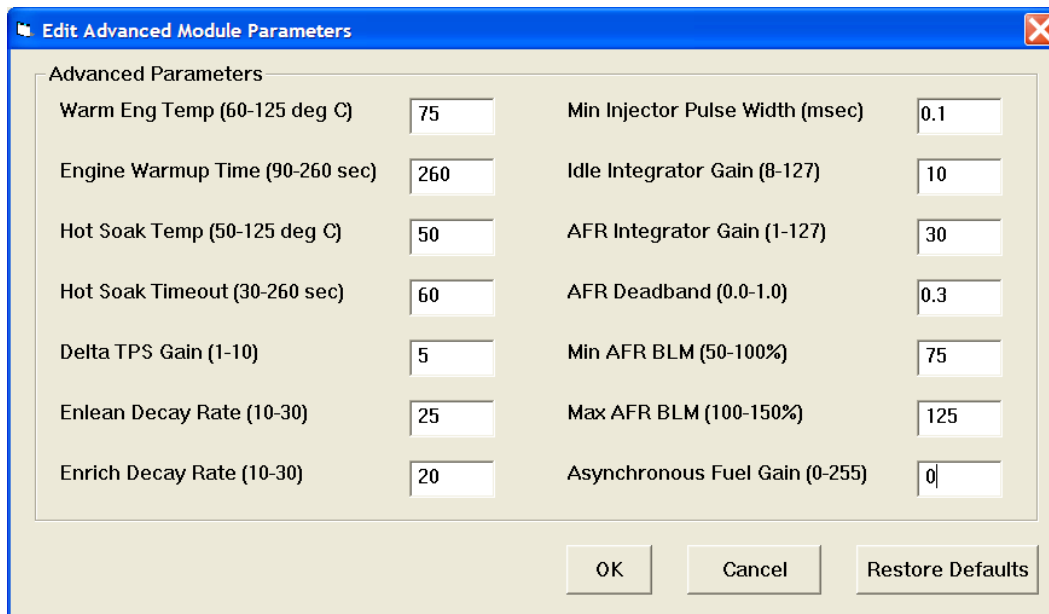
AFR Deadband – in AFR units. This parameter determines the deadband (minimum error before system response) for closed loop AFR control. A small deadband value improves closed loop stability and reduces hunting. The default value is 0.3.

Min AFR BLM – in percent. This parameter limits the minimum BLM value when the system is correcting a rich condition. The default value is 75%.

Max AFR BLM – in percent. This parameter limits the maximum BLM value when the system is correcting a lean condition. The default value is 125%.

Asynchronous Fuel Gain – this parameter determines the amount of fuel that is immediately (asynchronously) injected when the throttle is rapidly opened. Higher values result in more fuel. A zero value disables asynchronous injection

Figure 12 – Advanced Module Parameters Dialog Box



VIN ENTRY

Use the Edit VRFI VIN command to program the VIN. This function is optional and only supported by VRFI Gen 4 Rev 2.0 and later units.

If the VRFI firmware is updated using Mega Boot Programmer software, the VIN must be reentered. Note that the VIN is not stored as part of a VRFI setup file and is not changed if a different setup file is uploaded.

SPEEDOMETER CALIBRATION

When you open a file or download data, the VSS (vehicle speed sensor) frequency parameter appears on the Module Parameters dialog box. You must enter the value shown in Table 3. The VSS frequency parameter sets the correct speedometer and odometer scaling.

Table 3 – VSS Frequency at 100 KPH

Model	
30T front pulley (US: 2002-2003, International: all)	870 Hz
28T front pulley (US:2004 and newer, all others with 28T kit)	932 Hz

Speedometer Recalibration. You can easily recalibrate the speedometer (and odometer) to accommodate tire and gear changes. Run the motorcycle on a chassis dyno at a constant speed. Note the speedometer reading and the correct speed indicated on the dyno. Use the following formula to calculate the new VSS frequency parameter:

$$\text{New VSS Freq} = \frac{\text{Original VSS Freq} \times \text{Speedo Reading}}{\text{Indicated Dyno Speed}}$$

For example, if the original VSS frequency parameter was 932 Hz, the speedometer reading is 60 MPH and the indicated dyno speed is 57 MPH, then the new VSS frequency parameter should be:

$$981 \text{ Hz} = \frac{932 \text{ Hz} \times 60 \text{ MPH}}{57 \text{ MPH}}$$

The speed units cancel out, so you can use either MPH or KPH units in the calculation as long as you use the same units for both the speedometer reading and dyno speed. For best accuracy, use a test speed near highway cruising speed.

USER FUNCTIONS

User functions are displayed in a dialog box by using the Edit User Functions command on the Edit

menu. User functions control the operation of the user input and user output of the VRFI unit.

The user input on pin 16 is a 0 to +5V input that is internally "pulled high" to +5V. The input pin is sampled and the data is always logged as part of the VRFI data logging function. The user input can also be used for other functions such as selecting a stage RPM limit. In this case the user input is "active low" with a threshold of about 2.5V. You can connect a switch between the user input and ground. When the switch is closed and the user input pin is grounded, the stage RPM limit (our other selected function) will be activated.

The user output on pin 22 can drive a small load up to 0.5 amps and is protected against short circuits. The user output is "active low." It can be used to drive a standard automotive relay returned to +12V. When the user output is active, the pin is grounded.

User input functions include:

Data Log Only – default mode. For data logging connected switches.

Ignition Retard – applies user retard value (0 to 10 degrees) whenever the user input is grounded. To avoid potential conflicts, do not select ignition retard mode if the user output is in NOS trigger mode.

Ignition Kill – disables spark firing whenever the user input is grounded. Can be used with an air shifter to reduce stress during shifts.

Stage RPM Limit – activates stage RPM limit (2000 to 9900 RPM) whenever the user input is grounded.

User output functions include:

Off – default mode.

RPM And TPS Based Switch – general purpose switch function based on RPM and TPS. The user output is set on (pulled to ground) when RPM \geq RPM On **AND** TPS \geq TPS On. The user output then remains on until it is reset off when RPM $>$ RPM Off **OR** TPS $<$ TPS Off. This feature allows you to implement an RPM and TPS based window switch. In the sample data above, the use output would be active between 3000 and 5000 RPM if the throttle was opened above 90%.

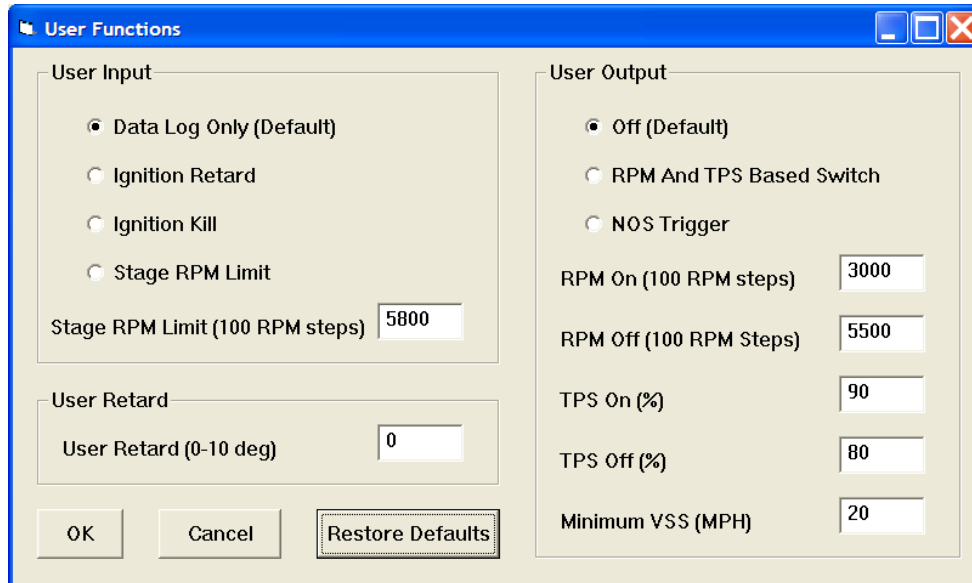
NOS Trigger – specifically designed to trigger an NOS system. The user output is set on (pulled to ground) when RPM \geq RPM On **AND** TPS \geq TPS On **AND** VSS \geq Minimum VSS. The user output then remains on until it is reset off when RPM $>$ RPM Off **OR** TPS $<$ TPS Off **OR** VSS $<$ Minimum VSS. As an

additional safety feature to prevent engine damage, the user output is immediately tripped off if the RPM limit is exceeded and cannot be set back on again until the TPS drops below the TPS Off level. In NOS trigger mode, the user retard value (0 to 10 degrees) is applied whenever the user output is on.

Once you have entered the appropriate user function parameters, click on OK to save your edits to buffer memory. If you click on Cancel, all your edits are lost. You can click on Restore Defaults to restore default values.

Individual parameters are enabled or disabled (grayed out) based on the user functions you selected.

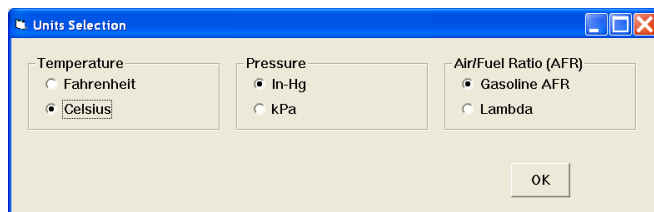
Figure 13 – User Functions Dialog Box



UNITS SELECTION

You can select the temperature, pressure, and air/fuel ratio units used for table data display. Use the Units Selection command on the Edit menu. A dialog box will appear as below. You can select Fahrenheit (F) or Celsius (C) temperature units, inches of mercury (In-Hg) or kilopascals (kPa) manifold pressure units, and air/fuel ratio in gasoline AFR or Lambda units. The program remembers the selections you have made.

Figure 14 – Units Selection Dialog Box



UPLOADING DATA

Refer to the Downloading Data section on page 17 for details about USB interface hookup and COM port setup. Before uploading, make sure the module parameters are correct.

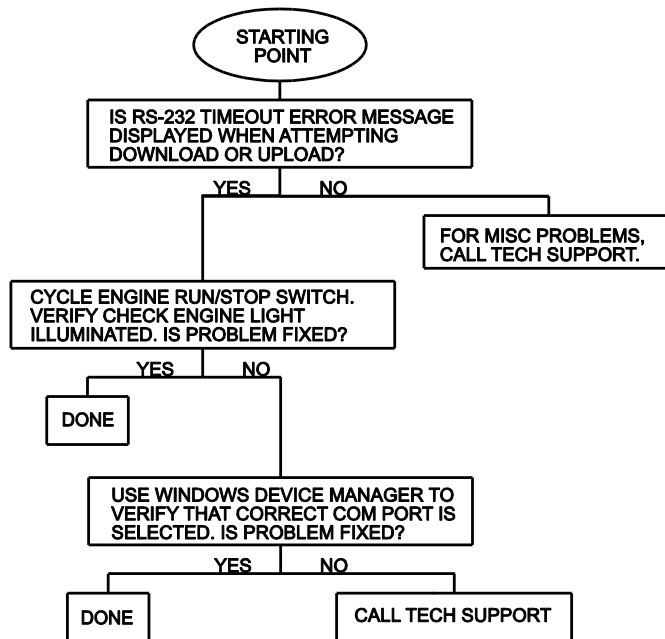
Upload data by using the Upload Data To VRFI command on the Communications menu. A status message is displayed when the upload process has been successfully completed.

If you attempt to upload data to anything other than a VRFI unit with correct firmware, an error message will appear and the upload will be aborted.

TROUBLESHOOTING FLOWCHART

Follow the troubleshooting flowchart shown on the following page. Experience has shown that most communication problems are user error or PC compatibility issues.

Software Communications Troubleshooting Flowchart



VRFI LOG SOFTWARE OVERVIEW

VRFI Log software runs under Microsoft Windows XP/Vista/7/8. This software allows users of VRFI Gen 4 fuel injection controller users to view real time engine data during dyno tuning, download and display data logged by the unit including operating statistics, and to control certain engine functions. **The term VRFI is used throughout this document as a generic term and refers to the new VRFI Gen 4 unless otherwise noted.**

After VRFI Log is launched, the main screen appears blank. You have multiple display options. You can display real time engine data on an instrument panel type screen by using the View Real Time Data command on the View menu. You can display and print data logged by the VRFI unit on a chart recorder type screen. Data logged by the VRFI unit must be downloaded before it can be displayed, by using the Download Logged Data From VRFI command on the Communications menu. Once data has been downloaded, it is automatically displayed on a chart recorder type screen. You can save this data by using the Save File command from the File menu. You can display a previously saved data file by first using the Open File command on the File menu and then using the View Chart command on the View menu.

You can also download, view, and print engine operating statistics and historical diagnostic codes by using the Download Statistics and Diagnostic Codes command from the Communications menu. Please note that this data is not saved.

VRFI Log is only compatible with VRFI Gen 3 and Gen 4 units and cannot be used to download data or open files from earlier generation VRFI and VRFID units.

A sample data file (Sample.log) is included in the program folder.

SOFTWARE INSTALLATION

The software is supplied on CDROM media or in the form of a compressed file downloaded from our website. The installation process uses InstallShield. This industry standard installer is based the new Microsoft Windows Installer service that greatly reduces potential problems such as version conflicts and allows for application self-repair.

Before proceeding with installation, shutdown any other applications that may be running. For Windows Vista, you must disable the User Account Control (UAC) during installation. If you are not familiar with the

UAC, please refer to the Vista UAC Tech Note on our website's Tech FAQ for details.

Use the Windows Explorer or the Run command from the Windows Start Menu to launch setup.exe in the VRFI3_Log folder on the CDROM or the setup.exe file downloaded from our website. InstallShield will install the software in an appropriate folder under Program Files.

Once InstallShield has completed the installation, VRFI Log will appear on the Windows Start Menu. You can then launch it just as you would any other Windows program.

VRFI Log requires the Monospace 821 BT fixed pitch printer font in order to properly align columns when printing. The Monospace 821 BT font is included in the distribution media and automatically copied to your Windows Fonts folder during installation. A backup copy is also placed in the program folder. If you accidentally delete this font, use the Install New Font command from the Fonts folder File menu. The filename associated with Monospace 821 BT is monos.ttf.

VRFI CONNECTION

The USB interface, P/N 102004, is used for communication with the VRFI module. No additional hardware is required. The USB interface connects to the OE data link. The OE data link uses a four terminal Deutsch connector that is usually found near the VRFI unit. All models require installation of the green PC link jumper wire (supplied with the VRFI kit). The USB Interface has a switch that selects the operating mode. For communication with the VRFI, you must use the TC88A And All Others switch position Turn the ignition key and engine run/stop switches on to provide power to the VRFI unit. Do not start the engine.

If the VRFI unit has been removed from the motorcycle, you can do bench top programming by using an adapter harness (P/N TCFI-ADAPT) that includes a small 12 volt DC power supply.

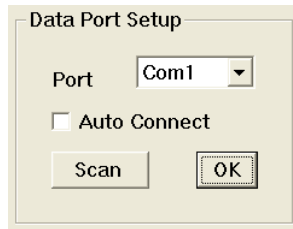
The VRFI Log program has auto-connect capability and a COM port scan function to aid in initial setup of the communications link. You can use the Port Setup command from the Communications menu to display the dialog box shown below and select the correct COM port.

If you are not sure what COM port the USB interface has been assigned to, you can click on the Scan button to automatically detect and select the correct port. Before you do so, make sure that the USB interface has been connected to your PC and the VRFI module. Both the ignition key and engine run/stop

switches must be turned on. Once the correct COM port has been selected, the program will remember this setting.

If you enable the Auto Connect check box, the program will try to connect to the VRFI every time the program is started. Please note that you must have the correct COM port selected and the USB interface connected to your PC and the VRFI module. Both the ignition key and engine run/stop switches must be turned on in order for auto-connect to work properly.

Figure 15 – Data Port Setup



REAL TIME ENGINE DATA DISPLAY

When the engine is running, you can display real time engine data on an instrument panel type screen by using the View Real Time Data command on the View menu. Please note that real time engine data cannot be directly saved by means of the VRFI Log program. However, this data is constantly being logged by the VRFI unit and can be downloaded (for example at the end of series of dyno runs).

Real time engine data is displayed on an instrument panel type layout with round tach and speedometer gauges and bar graph type gauges for most other parameters. Barometric pressure, any diagnostic codes, status of the user input and output, fan, and status messages are displayed in additional windows. If the engine is not running most values will appear as zero.

Displayed parameters include:

RPM – engine crankshaft RPM (numeric value displayed beneath gauge)

VSS – vehicle speed in MPH or KPH (numeric value displayed beneath gauge)

TPS – throttle position (0 to 100%)

MAP – manifold pressure in In-Hg (29.92 In-Hg or 101.3 kPa corresponds to atmospheric pressure)

ET – engine cylinder head temperature

IAT – intake air temperature

BAT – battery voltage

IAC – idle air control stepper motor position (higher number means more idle air)

AFR – the air/fuel ratio bar graph has dual pointers. The yellow pointer on the left side is the air/fuel ratio command (from AFR table). The white pointer on the right side is the actual air/fuel ratio based on the exhaust gas oxygen sensor reading. Note that the value will remain near 10 until the sensor has warmed up. Front and rear cylinder AFR values are displayed for all VRFI Gen 4 units when the WEGO IIID is installed.

BLM – block learn multiplier (main fuel table correction factor based on exhaust gas oxygen sensor feedback, shown as percent value from 75-125%). Separate front and rear cylinder BLM values are displayed.

FRONT INJ, REAR INJ – injector pulse width in milliseconds or duty cycle in percent

FRONT ADV, REAR ADV – ignition advance in degrees BTDC

You can also select the vehicle speed, temperature, pressure, and injector data units used for real time engine data display and data logging chart display. Use the Units Selection command on the Edit menu. A dialog box will appear as shown below. You can select miles per hour (MPH) or kilometers per hour (KPH) vehicle speed units, Fahrenheit (F) or Celsius (C) temperature units, inches of mercury (In-Hg) or kilopascals (kPa) manifold pressure units, pulse width in milliseconds or duty cycle in percent for injector data, and air/fuel ratio in gasoline AFR or Lambda units. The program remembers the selections you have made.

Figure 16 – Units Selection

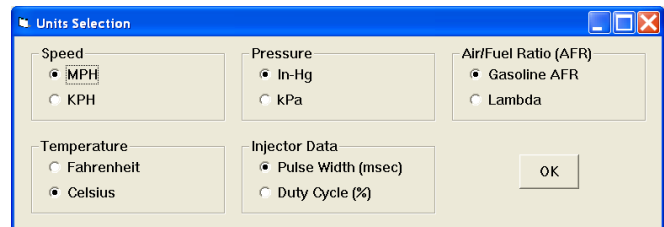
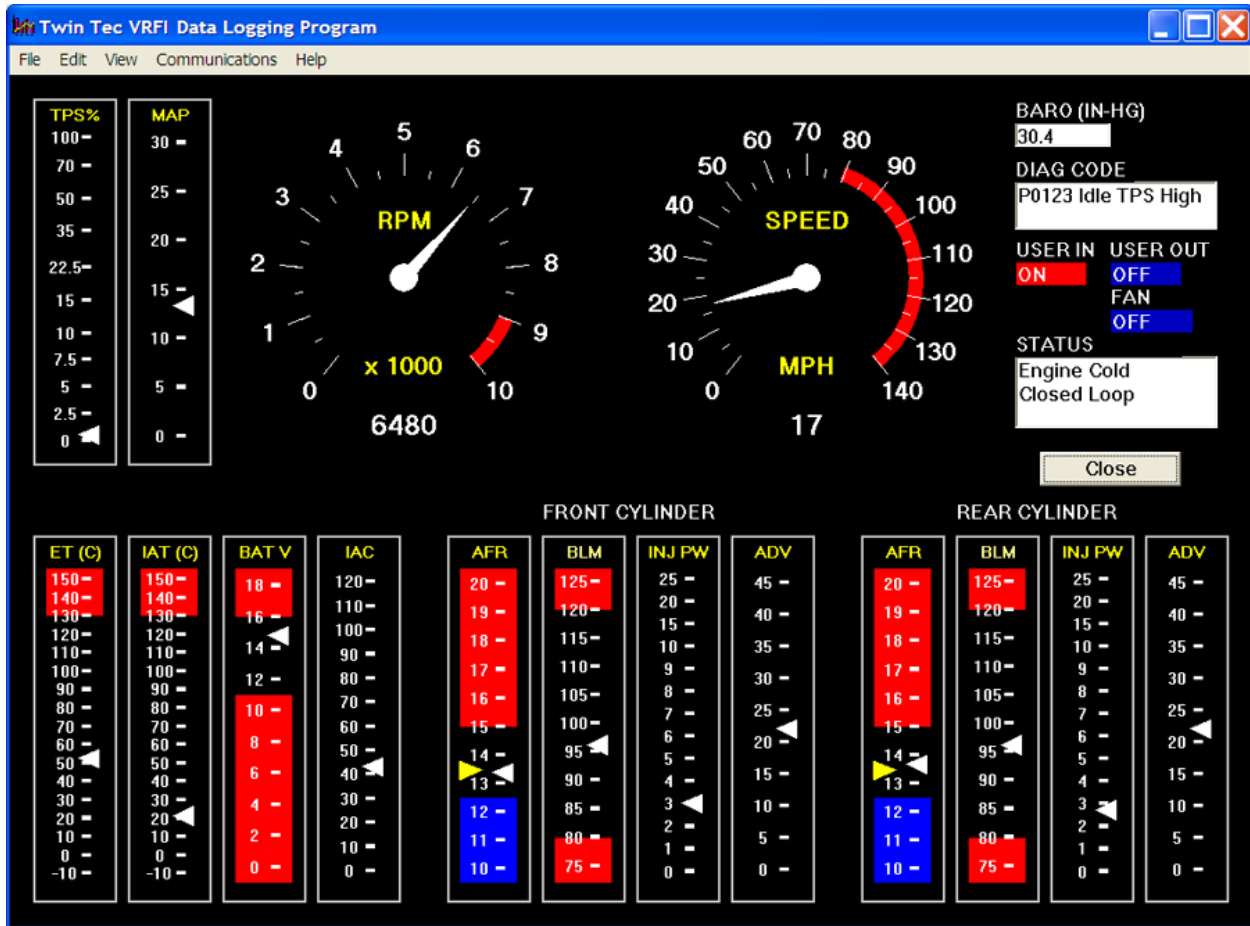


Figure 17 – Real Time Engine Data Display



IDLE TPS DISPLAY

You can check the idle TPS adjustment by using the View Idle TPS command on the View menu. Turn the run/stop switch on, but do not start the engine when using this function. Idle TPS volts are displayed on the TPS bar graph gauge. All other instrument values will appear as zero.

With the throttle fully closed, verify that the gauge display is between .30 to .80 volts. If the value is outside this range, you will have to adjust the TPS sensor. For optimum performance, adjust the TPS sensor to .40 volts.

IAC MANUAL OVERRIDE

The IAC Manual Override command on the Communications menu allows you to manually override the idle air control stepper motor position while the engine is running and vehicle speed is zero. Once the vehicle is moving, normal closed loop idle speed control always resumes. This command is primarily used to calibrate larger aftermarket throttle bodies, but can also be used as a diagnostic aid.

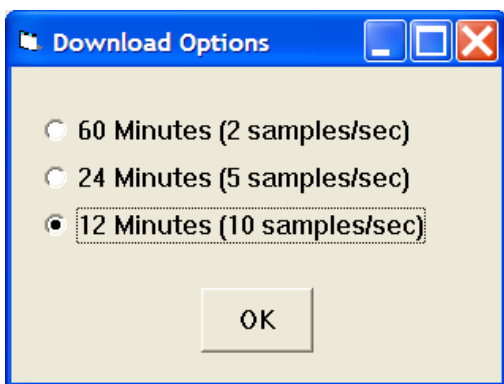
USER OUTPUT MANUAL OVERRIDE

The User Output Manual Override command on the Communications menu allows you to manually override the user output on VRFI units. This command can be used as a diagnostic aid to test accessory systems connected to the user output.

DATA LOGGING CHART DISPLAY

You can also display data logged by the VRFI unit on a chart recorder type screen. The data logging memory within the VRFI Gen 4 stores the last 36000 data points at 10 samples/second. This corresponds to 60 minutes of data. When you use the Download Logged Data From VRFI command on the Communications menu, the popup menu shown in Figure 18 will appear. You can select the length of the data set that will be downloaded. Once data has been downloaded, it is automatically displayed. **The last data logged will appear at the right end of the chart.** You can save the data by using the Save File command from the File menu after closing the chart display (data is not lost by closing the chart display). You can display a previously saved data file by first using the Open File command on the File menu and then using the View Chart command on the View menu.

Figure 18 – Download Options



Please note that real time engine data cannot be directly saved by means of the VRFI Log program. However, this data is constantly being logged by VRFI unit and can be downloaded (for example at the end of series of dyno runs).

Note that VRFI data files use a .log extension. You should create a separate folder to store these files.

You can select two parameters for display. Trace 1 is displayed in red with its Y axis legends on the left side of the chart. Trace 2 is displayed in green with its Y axis legends on the right side of the chart. The X axis is always elapsed time. You can zoom in, zoom out, or zoom all (displays entire data file). At the maximum zoom in level, approximately 100 data samples will be displayed on the chart. You can use the scroll bar to move the chart display window in

terms of elapsed time. If you hold the left mouse button down within the chart area, a cursor line appears. The exact values of the parameters displayed on trace 1 and trace 2 and the elapsed time appear in windows above the chart. When you zoom in or zoom out, the displayed data will always be centered about the cursor line. This allows you to quickly select and closely examine an area of interest. If you want to analyze the elapsed time between two events (for example the time required to accelerate from 0 to 60 MPH), you can move the cursor to the first event and then click on the Reset Time Display button. You can print the displayed chart to any Windows printer by clicking on the Print button (a color inkjet printer is recommended for best results).

Data parameters include:

RPM – engine crankshaft RPM

VSS – vehicle speed in MPH or KPH

MAP – manifold pressure in In-Hg (29.92 In-Hg or 101.3 kPa corresponds to atmospheric pressure)

TPS – throttle position (0 to 100%)

AFR CMD – air/fuel ratio command (10:1 to 20:1). This is the AFR value the VRFI is attempting to maintain.

FRONT AFR, REAR AFR – air/fuel ratio based on the exhaust gas oxygen sensor reading (10:1 to 20:1). Front and rear cylinder AFR values are displayed for all VRFI Gen 4 units when the WEGO IIID is installed.

FRONT BLM, REAR BLM – block learn multiplier (main fuel table correction factor based on exhaust gas oxygen sensor feedback, shown as percent value from 75-125%). Separate front and rear cylinder BLM values are displayed.

IAC – idle air control stepper motor position (higher number means more idle air)

IAT – intake air temperature

ET – engine cylinder head temperature

FRONT INJ, REAR INJ – injector pulse width in milliseconds or duty cycle in percent

FRONT ADV, REAR ADV – ignition advance in degrees BTDC

BAT – battery voltage

USER IN – user input displayed as digital (on/off) signal. On means that the input is active (grounded).

USER OUT – user output displayed as digital (on/off) signal. On means that the output is grounded.

Additional data is displayed at the lower right side of the screen. This data includes:

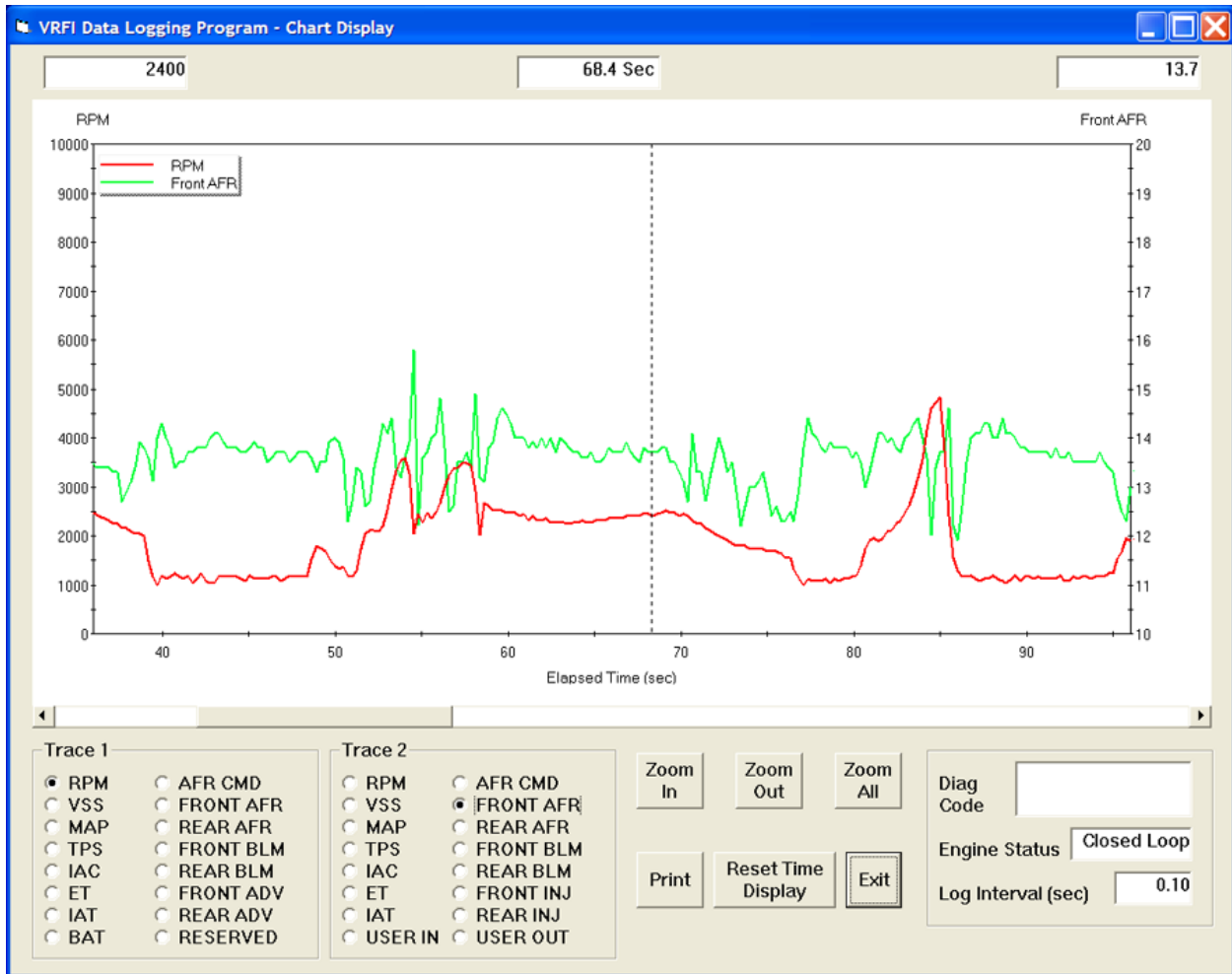
Diagnostic Code – normally blank unless a diagnostic code is set. Refer to page 12 for details.

Engine Status – based on engine temperature and open/closed loop AFR

Log Interval – the actual data logging interval in seconds

You can clear the data within the VRFI by using the Clear VRFI Data Buffer command from the Communications menu.

Figure 19 – Data Logging Chart Display



The following additional functions are available from the Edit menu:

Fuel Cell Display – shows the active cell in terms of RPM and TPS percent at the cursor position. TPS percent is compensated for idle air. This function is useful for determining what fuel table cell is active at any given point in time.

The same RPM and TPS cell is active in all fuel tables.

Misc Data Display – shows the current barometric pressure and nominal IAC value (value learned by system when engine is completely warmed up and at stable idle condition).

OPERATING STATISTICS

You can also display engine operating statistics logged by the VRFI unit. Data logged by the VRFI unit must be downloaded before it can be displayed, by using the Download Statistics and Diagnostic Codes command on the Communications menu. Once data has been downloaded, it will automatically be displayed. If you exit from the display, you can view the same data again by using the View Statistics command from the View menu. Please note that this data is not saved.

The data is fairly self-explanatory. Total hours represents the total time that the engine was running. ID represents the firmware identification. This field typically includes the manufacturer (Twin Tec), model number, program revision and author's initials, and

date. Note that the date is not a manufacturing date code, just the date for the particular firmware release.

Elapsed time is displayed for 13 RPM bands from idle to 6999 RPM. Note that elapsed time data is rounded off during each engine run, so the sum of the elapsed time figures may not precisely match the total hours. The program also displays the maximum engine RPM, time at the RPM limit (in seconds for better resolution) and the number of engine starts.

Clicking on the Print Statistics button prints a report. When you click on this button, a small data entry screen pops up and allows you to add a serial number or comment that will appear on the printout. You can also use the Print command from the File menu.

Figure 20 - Operating Statistics Display

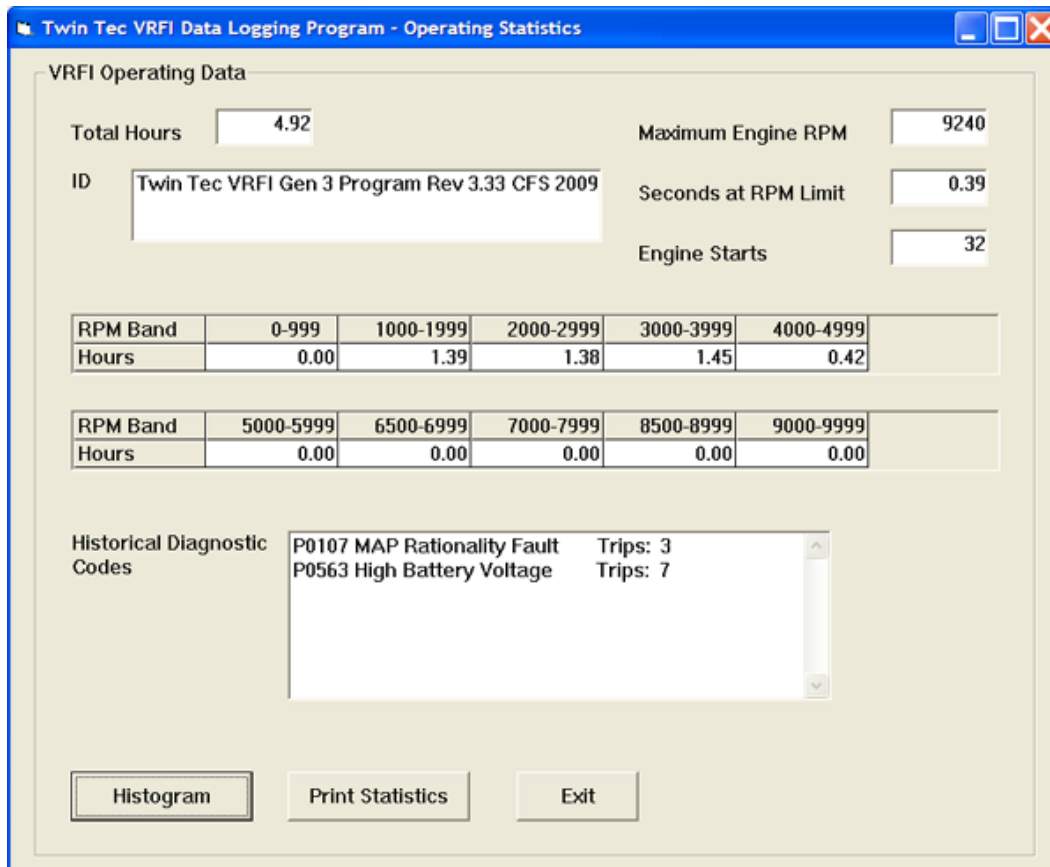
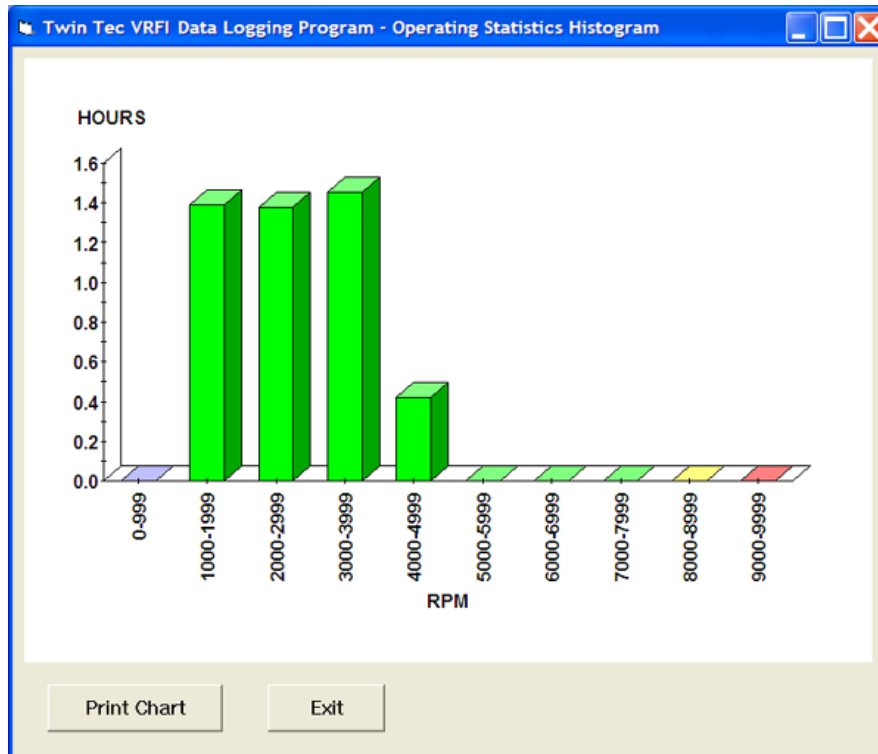


Figure 21 - Operating Statistics Histogram Chart



Any historical diagnostic codes logged by the VRFI unit are listed along with the number of trips (engine start cycles) since the individual code was last logged. Codes are automatically cleared after 50 trips.

Customers are often confused about the meaning of the term “trips.” This is an industry standard terminology. If a code shows 40 trips, it means that the code was set 40 engine start cycles ago, not that the code has been set 40 times.

Refer to the page 12 for further information about diagnostic codes. You can clear historical diagnostic codes by using the Clear Historical Diagnostic Codes command from the Communications menu.

The elapsed time data in the various RPM bands can be displayed in the form of a histogram chart by clicking on the Histogram button. Color coding of the bars helps to interpret the data. The idle RPM band is blue, normal operating RPM bands are green and high RPM bands are yellow and red. The chart is automatically scaled for best display. You can print the chart along with a complete statistics report by clicking on the Print Chart button.

IMPORTING DATA INTO EXCEL

Data files saved from VRFI Log are in comma delimited ASCII format. You can easily import a data file into other programs such as Microsoft Excel for further analysis. You can also view data files with a text editor such as Windows WordPad. To import a data file into Excel:

1. Start Excel. In the File Open dialog box, select Files of type: All Files (*.*). Then browse for the data file.
2. The Text Import Wizard appears. For step 1, select delimited file type. For step 2, select comma delimiter. For step 3, select general column data format. Then click on Finish.
3. You can then format the data and save the spreadsheet as an Excel file.

TROUBLESHOOTING FLOWCHART

Follow the troubleshooting flowchart shown on page 30. Experience has shown that most communication problems are user error or PC compatibility issues.

VRFI GEN 4 PRE-INSTALLATION CHECKS

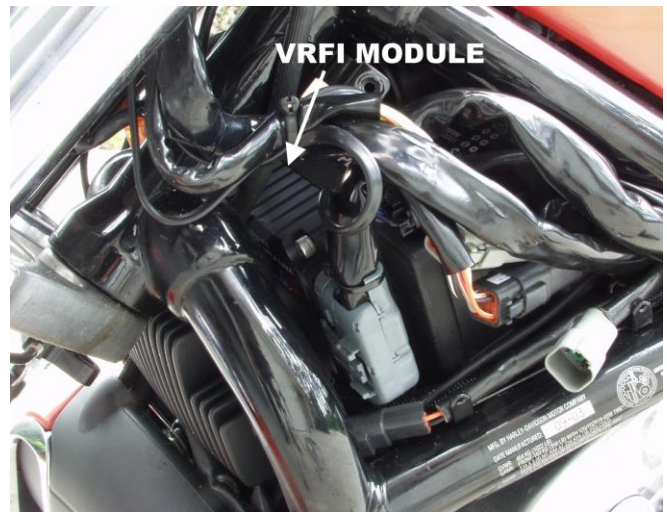
Make sure that the OE Delphi® system is functioning correctly (other than tuning issues) before attempting VRFI installation. If the OE Delphi® system is setting diagnostic codes, find and correct any underlying problems first.

Correct operation of the throttle position sensor (TPS) is critical for proper operation of the VRFI system. The TPS has a resistance element similar to the volume control on a radio. In time, it will wear out and become noisy. We recommend replacing the TPS after 10,000 miles.

VRFI GEN 4 INSTALLATION

1. If motorcycle is equipped with security system (TSSM module), make sure system is disarmed. Turn off the ignition switch. Remove the right side cover and maxi-fuse before proceeding.
2. On most models, the Delphi® module is under the left cover. Remove the left cover and remove the Delphi® module from the left side.
3. Install the VRFI module. Figure 22 shows an installation on early models where the ECM is in front of the battery. The module is a tight fit. You will have to push the adjacent wire harness aside. Use the 6-1.00 x 30mm socket head cap screws supplied with the VRFI kit. Insert the screws into the VRFI housing and use short strips of masking tape to hold them in place while sliding the VRFI into position. To tighten the screws, you will require a stubby 5mm hex key (such as MSC 83827642). You may have to trim the stubby hex key to fit early applications. Later models locate the ECM at the rear.
4. **Do not reinstall the maxi-fuse until you have completed installation of the WEGO IIID. Do not attempt to start the engine until you have completed the initial setup.**

Figure 22 - Typical Installation (Early Models)



GENERAL RECOMMENDATIONS

The VRFI is designed to be used with the H-D® OE coil. VRSC engines require a special coil with low primary resistance and an additional terminal for ion-sensing. Do not attempt to use any aftermarket coil.

Due to the short lengths involved on motorcycle applications, energy losses in spark plug wires are insignificant. OE carbon core suppression cables will deteriorate after several years. For a more durable replacement, we suggest spiral core type spark plug cables.

CAUTION: Do not use solid copper spark plug cables or non-resistor type spark plugs. The VRFI unit may misfire.

WEGO IIID INSTALLATION OVERVIEW

When used with the Twin Tec VRFI Gen 4, the dual channel WEGO IIID allows simultaneous front and rear cylinder fuel auto-tuning during actual riding conditions. **The terms VRFI and WEGO are used throughout this document as generic terms and refer to the various VRFI Gen 4 and WEGO IIID units unless otherwise noted.**

The WEGO system uses low cost Bosch LSU 4.2 5-wire wide-band oxygen sensors. By utilizing miniature surface mount electronics technology, digital signal processing techniques, and a switching power supply for the sensor heater, the WEGO provides the same level of accuracy as lab systems costing thousands of dollars. The WEGO unit has dual 0-5 volt analog air/fuel ratio (AFR) outputs that are connected to the VRFI for closed loop AFR control.

REPLACEMENT SENSORS AND ACCESSORIES

The WEGO uses standard Bosch LSU 4.2 sensors used on a VW production application (Bosch P/N 0 258 007 057/058 or VW P/N 021 906 262B). The proprietary VW connector is replaced with a smaller Deutsch DT-04-6P. We offer replacement sensors with the Deutsch connector installed.

WEGO IIID INSTALLATION

1. Turn off the ignition switch. Remove the right side cover and maxi-fuse before proceeding.
2. In general, the sensors should be mounted 2-8 inches from the head flange. Available clearance will usually dictate the optimum location. When choosing a mounting location, allow several inches clearance for the sensor wire harness. The wire harness must exit straight out from the sensor. Do not loop the harness back onto the sensor body. With the VRSC engine, the space available for exhaust gas oxygen sensor mounting is limited, especially for the rear sensor. Refer to Figures 23 and 24 for suggested sensor mounting locations. Mock up the installation carefully before drilling and welding.
3. **2007 and later models with original equipment 18 mm oxygen sensors (all others skip ahead to step 4).** You may be able to use the original equipment (OE) oxygen sensor mounting bosses. Remove the OE sensors. You do not have to remove any of the OE wiring, just tape up the mating connectors. Do not install the new Bosch

sensors until after the free air calibration procedure described in the following section. Always use an anti-seize lubricant such as Permatex 133A on the sensor threads. Skip ahead to step 5.

4. 18 x 1.5 mm weld nuts must be welded onto the exhaust pipes. After welding, run an 18 x 1.5 mm tap through the threads. Failure to clean the threads may result in sensor damage. Note that most automotive muffler shops are familiar with oxygen sensor weld nut installation on custom pipes. Do not install the sensors until after the free air calibration procedure described in the following section. Always use an anti-seize lubricant such as Permatex 133A on the sensor threads.

Figure 23 – Typical Front Sensor Installation

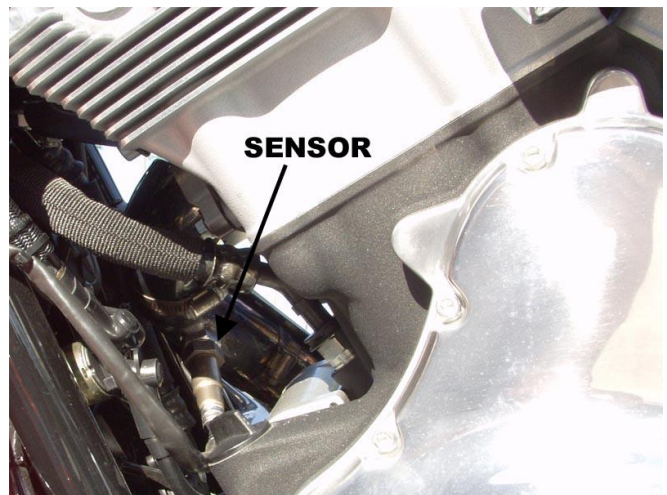


Figure 24 – Typical Rear Sensor Installation



5. Install the WEGO unit. For most applications, we recommend mounting the WEGO on top or near the battery in proximity to the data link connector.

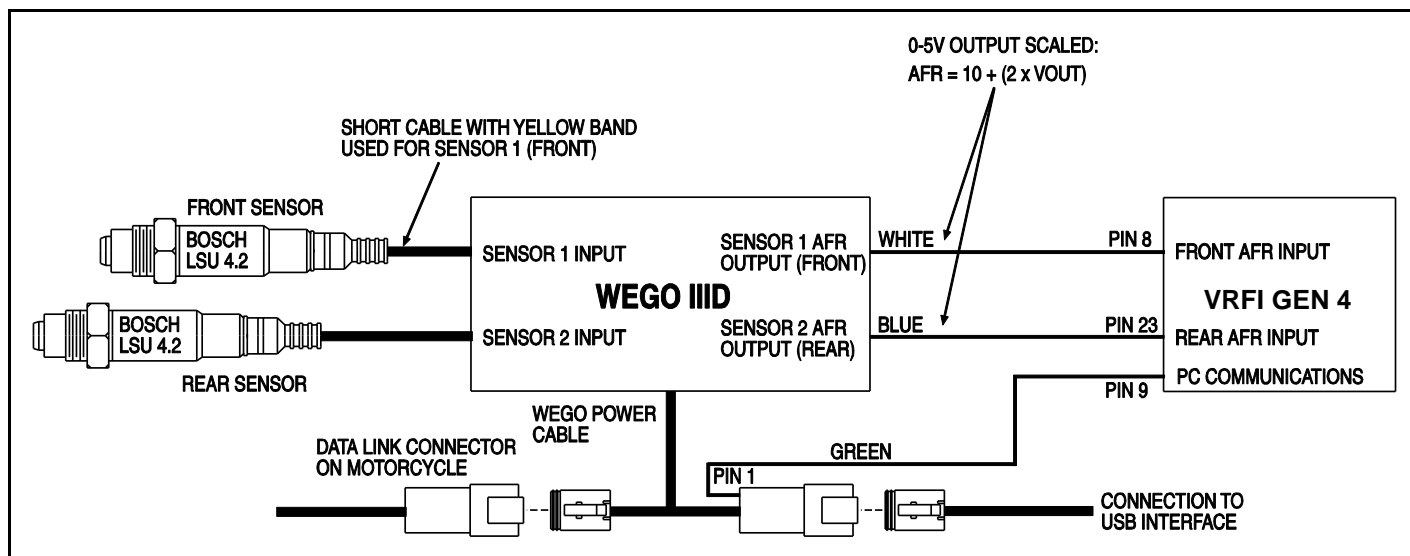
Use strips of Velcro (not supplied) to secure the WEGO. To provide clearance, you may have to trim some material from the air box inlet. You will have to remove the air box for access.

6. Connect the Bosch sensors to the 6 pin mating connectors on the WEGO wire harness. The cable with the yellow band is for sensor 1 (front). For additional protection and improved cosmetics, use Techflex 1-1/4" Black Flexo Clean Cut FR expandable sleeving over the connectors (available from www.wirecare.com).
7. Refer to Figure 25. Connect the WEGO power cable to the four terminal Deutsch style data link connector on the H-D® wiring harness. Refer to the H-D® Electrical Diagnostic Manual for your model

for connector location. Some models may have similar appearing connectors that could be mistaken for the correct data link connector.

8. Connect the green, blue and white wires from the WEGO to the VRFI as shown in Figure 25. The female Micro-Pack terminals at the end of these wires are installed in the OE Delphi connector that mates with the VRFI. Carefully open the Delphi strain relief and remove the clear plastic retainer. Pull out the blue seals at pins 8, 9 and 23. **Remove and tape up any existing wires at these pins.** Install the female Micro-Pack terminals. Pin numbers are marked on the strain relief.
9. Reinstall the maxi-fuse and right side cover.

Figure 25 - WEGO Hookup



WEGO III D OPERATION

For more information about wide-band oxygen sensors including the Bosch LSU 4.2, we suggest that you visit the Tech FAQ on our website at www.daytona-sensors.com.

The WEGO has red status LEDs for each channel. When power is turned on, the LEDs blink at a slow rate until the corresponding sensor has reached normal operating temperature.

After installation, the WEGO system requires free air calibration. This should be done with the sensors dangling in free air. The environment must be free of hydrocarbon vapors. We suggest that you perform the free air calibration outdoors. Turn the free air calibration trimpots on the WEGO full

counterclockwise. Turn on power and wait for 60 seconds so the system can fully stabilize. Then slowly turn each free air calibration trimpot clockwise until the corresponding LED starts flashing at a rapid rate. Try to set each trimpot at the point where its LED just starts to flash.

The free air calibration procedure should be performed at reasonable intervals (every 250-500 hours) or whenever a sensor is replaced. If you cannot get an LED to rapidly flash when its trimpot is turned full clockwise, you either have a damaged sensor or very high hydrocarbon levels in your environment.

If both LEDs keep blinking at the slow rate, you may have a low battery voltage condition. Try connecting a battery charger.

The WEGO includes internal diagnostics for abnormal battery voltage (less than 11 volts or greater than 16.5 volts), sensor open circuit, and sensor short circuit conditions. A fault condition causes the status LEDs to blink at the slow rate.

Figure 26 - WEGO Unit



TROUBLESHOOTING FLOWCHART

Follow the troubleshooting flowchart shown on the next page. Experience has shown that most units returned for warranty are OK and another problem, such as user error, a degraded sensor, or bad power connections is later identified.

CAUTION: Racing gasoline containing lead will quickly degrade the sensors. Under these conditions, expected sensor life is less than 10 hours. There is no warranty on sensors.

WEGO IID Troubleshooting Flowchart

