



**INSTALL INSTRUCTIONS FOR:
SYSTEM #817818
2018 JEEP WRANGLER JL
4-DOOR UNLIMITED
FITS: 3.6L ENGINE**

REVIEW FLOWMASTER SYSTEM:

1. Please take a moment to read and understand these instructions before installing your Flowmaster performance system. Use the parts drawing and list to verify exhaust system contents.

NOTE: Some steps in the following instructions may contain two images. The first identifies location of action performed, the second identifies the action performed.

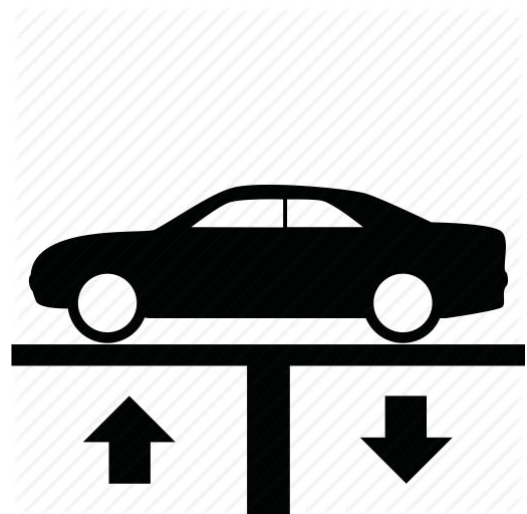
PART NO.	DESCRIPTION	QTY.
815425-516	Muffler	1
86505S	Inlet Pipe, Front	1
86506S	Inlet Pipe, Rear	1
86499S	Tailpipe	1
PK965	Hardware Pack	1
MC250BS	2-1/2" Stainless Band Clamp	3
HW502	7/16" Hanger Keeper	2

REMOVE STOCK EXHAUST SYSTEM:

WARNING:

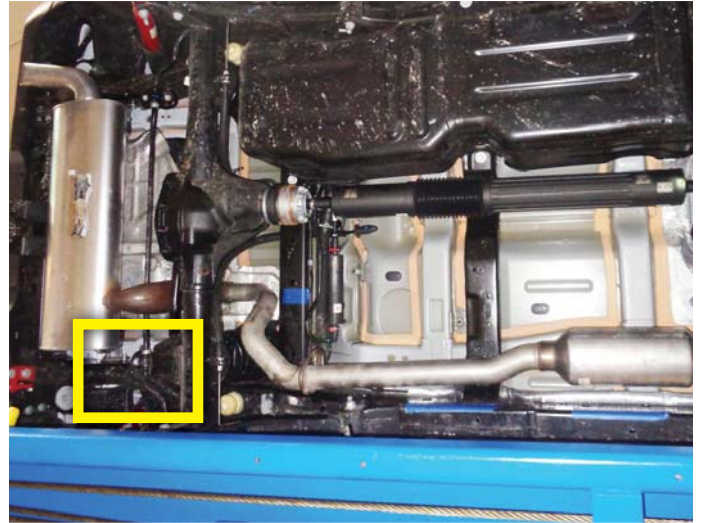
Avoid serious burns! Allow the exhaust system to cool completely before removing the factory exhaust system.

2. Raise the vehicle up on a hoist or rack to working height. If you don't have access to a hoist or rack, raise the vehicle and support securely with jack stands. Use penetrating lubricant as necessary to ease disassembly.

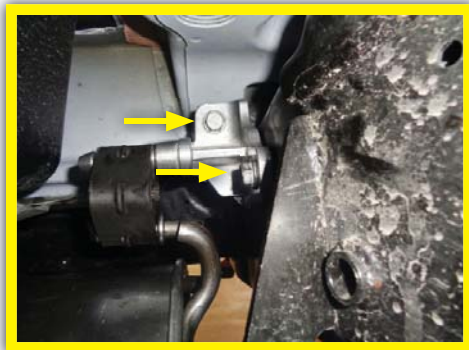


NOTE: Use stands when necessary to support parts as you complete all following instructions.

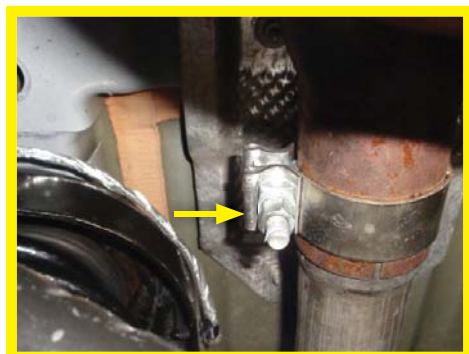
3. Remove bolts (x2) from mount on driver side above muffler in area indicated.



4. Remove bolts (x2) from mount on passenger side above muffler in area indicated.



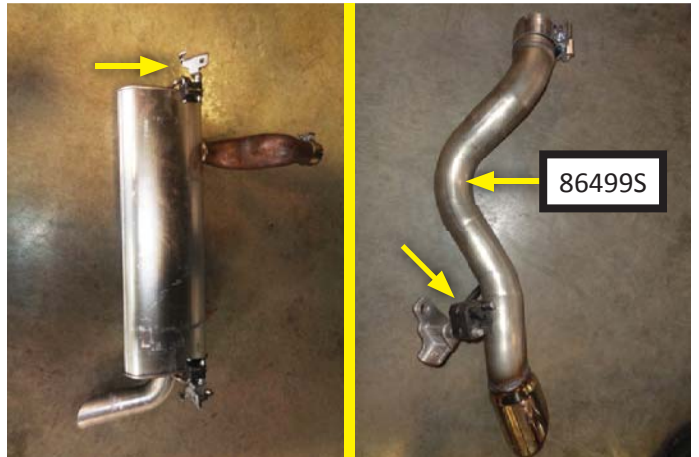
5. Loosen clamp at muffler inlet connection above rear axle.



6. Remove muffler from vehicle.



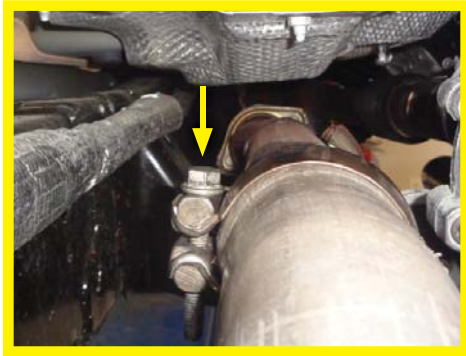
7. Place stock muffler next to tailpipe (86499S) oriented in the same direction. Then transfer driver side mount from muffler to tailpipe.



8. Remove stock resonator assembly from rubber isolator with a pry bar and retain for re-use.



9. Loosen bolt on clamp at resonator inlet.



10. Remove resonator assembly from vehicle.



11. Remove clamp from resonator inlet and retain for re-use.

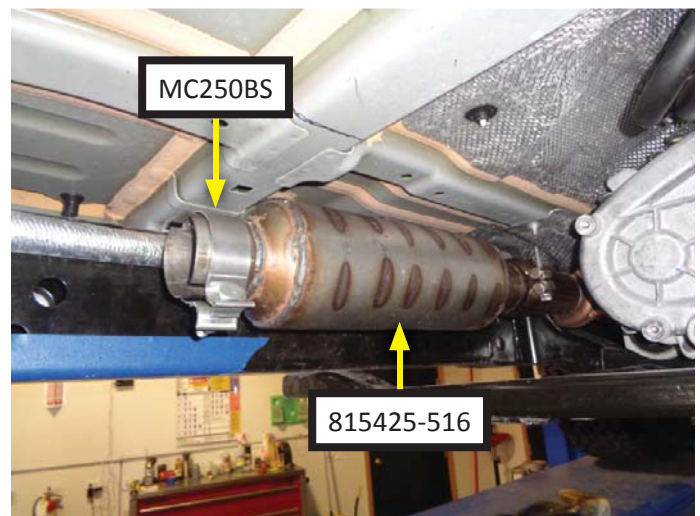


INSTALL FLOWMASTER EXHAUST SYSTEM

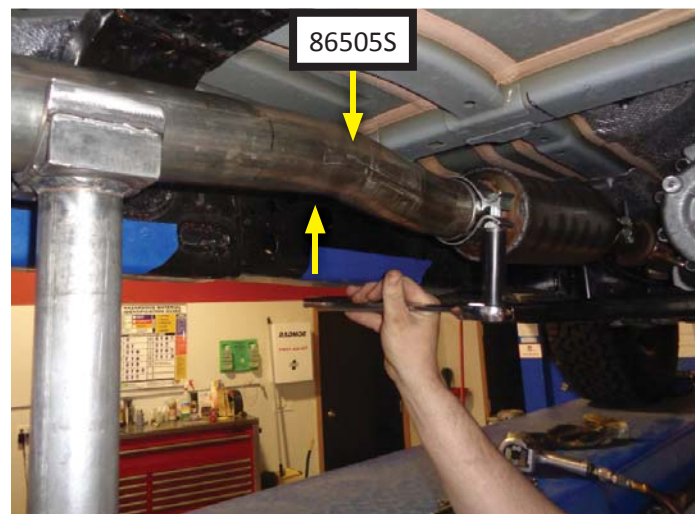
12. Remove nuts from stock and Flowmaster clamps, apply anti-seize compound to bolts and re-install nuts.



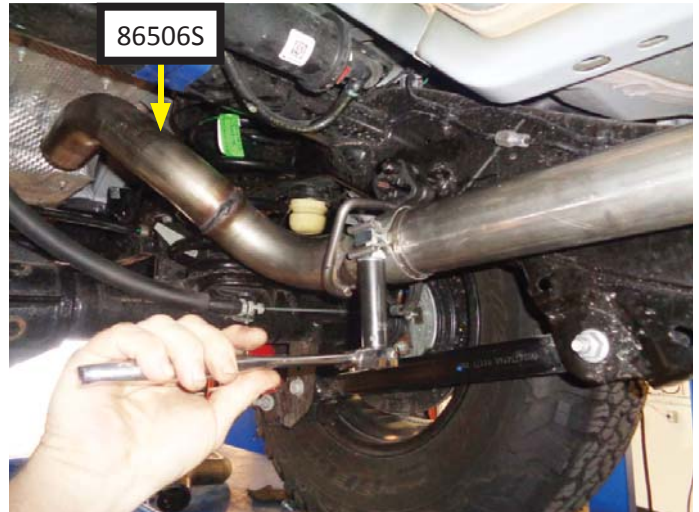
13. Place factory clamp (removed step 11) over ball end of factory inlet. Mate ball end of **muffler (815425-516)** to factory pipe and tighten factory clamp just enough to allow for adjustment. Slip **clamp (MC250BS)** over muffler outlet.



14. Place **front inlet pipe (86505S)** into muffler. Make sure bend on front inlet pipe is oriented upwards for maximum clearance (as indicated). Tighten clamp just enough to allow for adjustment.



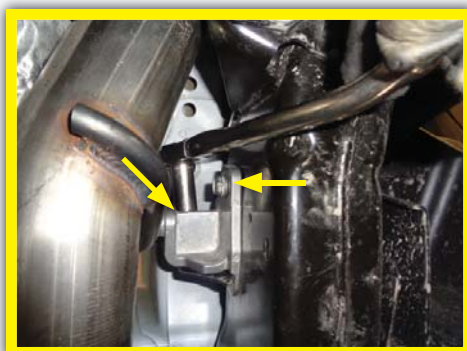
15. Place **clamp (MC250BS)** onto slip-fit of **rear inlet pipe (86506S)**. Connect front and rear inlet pipes while pushing wire hanger into rubber isolator on vehicle. Tighten clamp just enough to allow for adjustment.



16. Place **clamp (MC250BS)** onto slip-fit of tailpipe, then slide tailpipe onto rear inlet pipe. Make sure tailpipe bend curves over suspension components then ensure connections are completely seated.



17. Place factory (driver side) mount into position, then reinstall and tighten factory bolts (x2) (removed step 3).



18. Adjust exhaust system components to provide a satisfactory fit. Maintain a minimum of 1/2" clearance around each component while keeping suspension, travel and vibration in mind. Once adjustments are made, securely tighten all clamps.
19. Install **hanger keepers (HW502)** onto the end of each hanger to prevent components from slipping out of their rubber mounts.
20. We recommend welding all slip-fit connections for a more secure installation. You may also apply high temperature paint over welded areas to prevent rust and premature corrosion.

Congratulations, the installation of your FLOWMASTER performance exhaust system is now complete!



NOTE: Flowmaster maintains a highly trained technical service department to answer your technical questions, provide additional product information and offer various recommendations.

Flowmaster Technical Service: (707) 544-4761
Monday – Friday: 7:30 am to 5:00 pm Pacific Time
(Closed Saturday and Sunday)

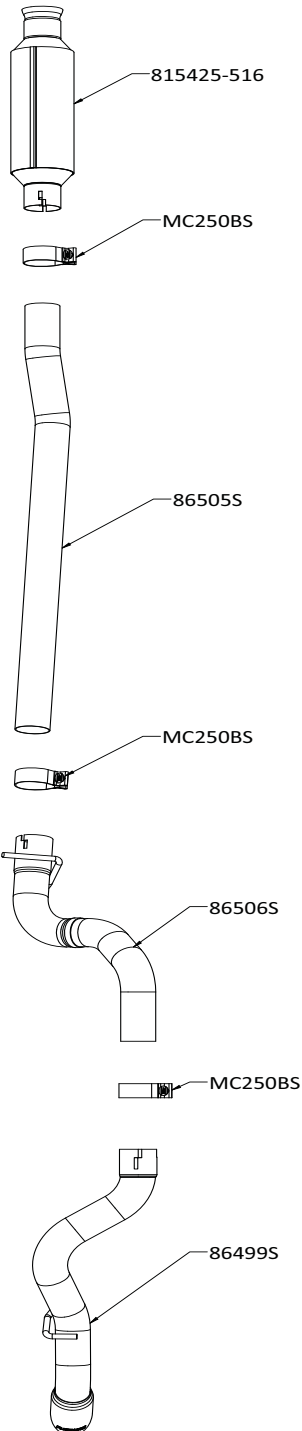
FLOWMASTER
100 Stony Point RD., Suite 125
Santa Rosa, CA 95401





OUTLAW
S E R I E S
4095® Stainless Steel

Installation diagram for:
SYSTEM # 817818
2018 JEEP WRANGLER JL
4-DOOR UNLIMITED
FITS: 3.6L ENGINE



Technical support (707) 544-4761