

# Hellwig PRODUCTS.com

559-734-7451 800-367-5480 FAX 559-734-7460

## INSTALLATION INSTRUCTIONS 1984-2001 Jeep Cherokee (XJ) 7874 FRONT STABILIZER BAR

Thank you for purchasing a quality Hellwig Product.

**PLEASE READ THIS INSTRUCTION SHEET COMPLETELY BEFORE STARTING YOUR INSTALLATION**

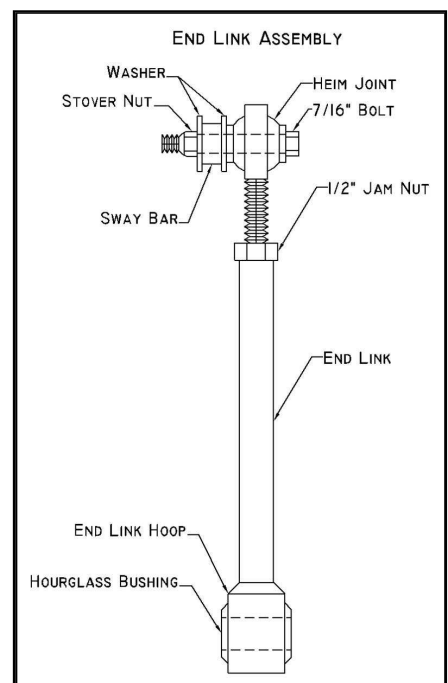
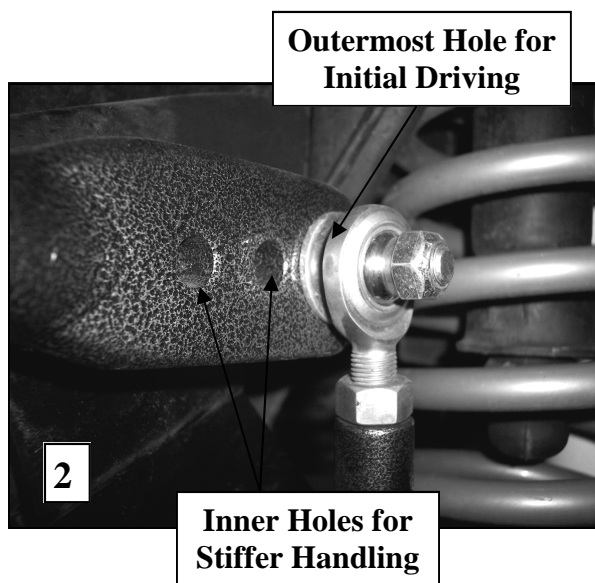
**SAFETY: BEFORE STARTING YOUR INSTALLATION, BE SURE TO SET PARKING BRAKE AND CHOCK TIRES.**

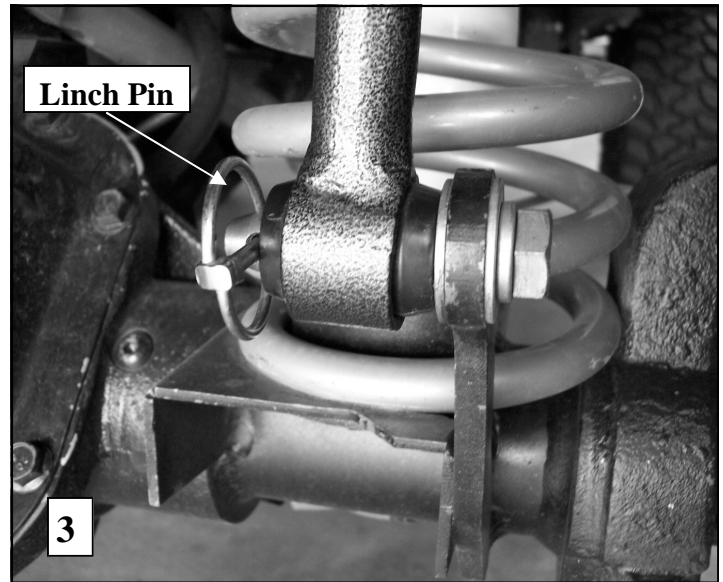
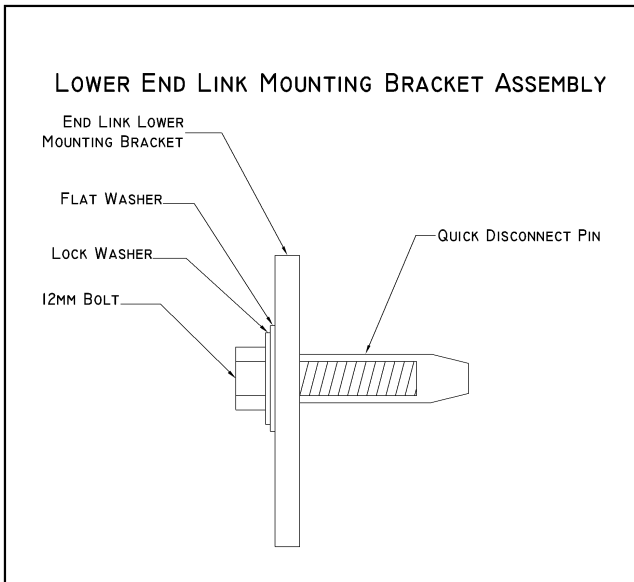
**NOTE: TO EASE INSTALLATION AND TO PROPERLY ADJUST THE BAR, THE WEIGHT OF THE VEHICLE MUST BE ON THE SUSPENSION, AS IF DRIVING DOWN THE ROAD. DO NOT RAISE VEHICLE BY THE FRAME.**

**NOTE: THIS SWAY BAR IS DESIGNED TO MOUNT ON THE TOP OF THE WITH THE ARMS TOWARDS THE BACK OF THE VEHICLE.**

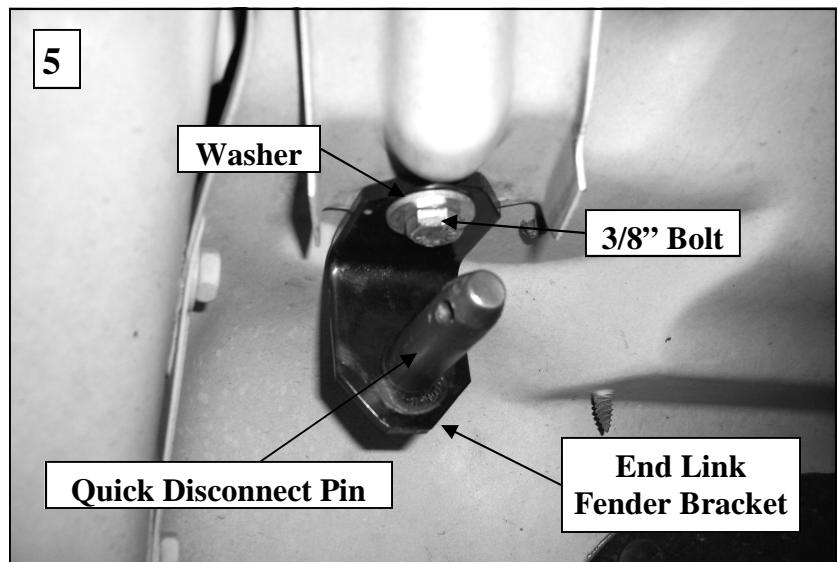
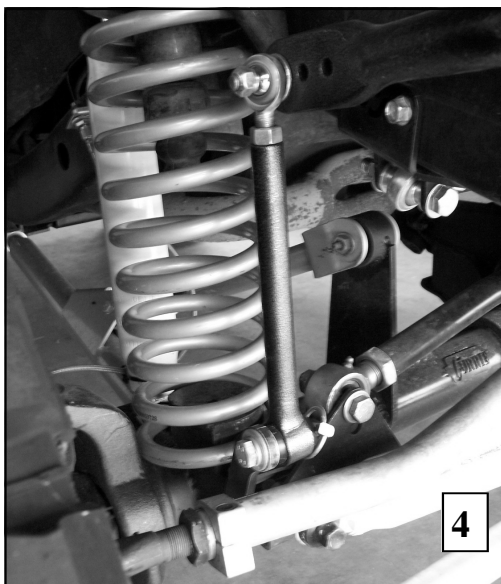
**NOTE: THIS KIT INCLUDES LOCK NUTS WHICH REQUIRE TIGHTENING WITH A WRENCH AFTER BEING STARTED BY HAND.**

1. Remove the front factory sway bar by unbolting the u-bolts from the frame. Save the u-plate bolts as they will be reused.
2. Remove end link bolt from axle brackets by turning the bolt until it breaks free. Penetrating fluid may be necessary if the bolt is rusty. The new end link pin will occupy the mounting hole in the axle brackets.
3. Lubricate the inside of the D shaped bushing and place them on the sway bar in the stock location.
4. Place the bar on the frame, center it and then bolt the u-plate over the D bushing to hold the bar in place. Leave loose at this time for later adjustment.
5. Assemble end links together as shown in photo 1 and the diagram. The heim joint will be threaded into the end link with a jam nut. Lubricate the outside of the hourglass bushing and tap it into the hoop on the end link. Leave loose at this time for later adjustment.





6. Loosely attach the rod end to the middle hole on the sway using the 7/16" bolt, washers and stover nut. **The middle hole position is for sizing the end link only**, it is recommended to start with the end link attached to the outermost (softest) hole until the driver gets used to the change in ride characteristic and they can then adjust the hole positioning for their driving style.
7. Attach the quick disconnect pins to the existing lower end link mounting bracket following the diagram and Photo 3. Torque bolts to 25-30 ft-lb. A small phillips screwdriver can be inserted in to the hole in the end of the pin to keep it from turning while tightening bolt.
8. Lubricate the inside of the hourglass bushing on the end link and slide it over the quick disconnect pin. This will be held in place with the included linch pin.
9. Lengthen or shorten the end link so the sway bar arms are parallel to the ground. Once it's the correct length, tighten the jam nut to hold it in place.
10. Move the rod end to the outermost hole, recheck that the bar is centered and tighten down all end link bolts to 35-40 ft lb and u-plate bolts in frame to 25 ft-lb.



# Hellwig PRODUCTS.com

559-734-7451 800-367-5480 FAX 559-734-7460

11. Replace the plastic cover over frame bushings.
12. Connect the end link quick disconnect pins to the fender mounting brackets as shown in photo 5. Locate brackets to hold sway bar in desired position when disconnected. The end links can be disconnected from the axle and moved to these locations when the vehicle is being used off-road and needs additional suspension flex. For on-road use, leave the end link attached to the lower end link mounting bracket.
13. When desired position is located, drill 3/8" hole in fender and locate brackets with 5/16" hardware provided. Torque bolts to 15-20 ft-lb.
14. Bounce the vehicle, check for clearance on all undercarriage components; exhaust, wires, shocks, brake and fuel lines. Test drive the vehicle and recheck for clearance and installation alignment.
15. For off highway use, the end links can be disconnected from the axle and moved to the pins on the fender mounting brackets to allow additional suspension flex. For onroad use, make sure the end links are attached to the pins attached to the axle mounting brackets.
16. After one week of driving recheck your installation recheck on a regular basis thereafter. Your Hellwig suspension product is built to last. However, as with all vehicle systems, it requires routine inspection. Inspect your Hellwig installation looking for secure hardware and fittings and tight fitting brackets and bushings. If you do not perform this inspection, have your professional mechanic inspect as described.

**ATTENTION INSTALLER: BE SURE THAT THE CUSTOMER RECEIVES THIS INSTRUCTION SHEET,  
ALL IMORTANT NOTE CARDS AND THE WARRANTY FORM**