

INSTALLATION INSTRUCTIONS

DOMINATOR III SERIES SIDE STEPS PART NUMBER D361271 (B)
99-10 DODGE RAM QUAD CAB P/U 4DR 2/4WD SHORT BED

Do not attempt to install this product on any vehicle other than the one it is designed for and listed above!

PACKING LIST

QTY PART DESCRIPTION

24 3/8" X 1 1/4" HEX BOLTS
42 3/8" FLAT WASHERS
30 3/8" LOCK WASHERS
18 3/8" HEX NUTS
6 VINYL GASKETS

QTY PART DESCRIPTION

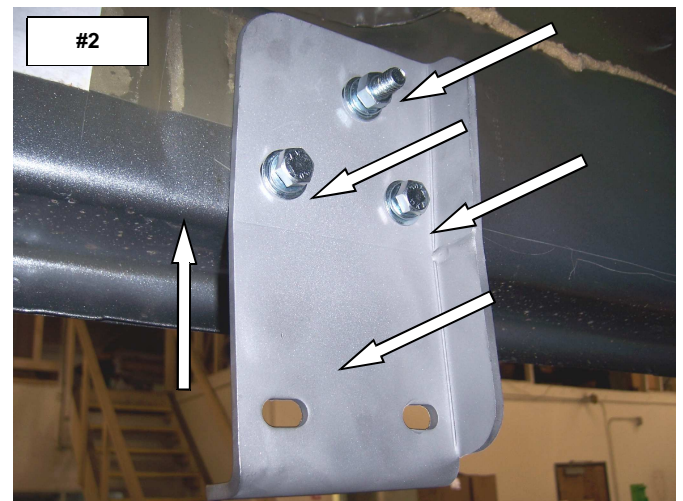
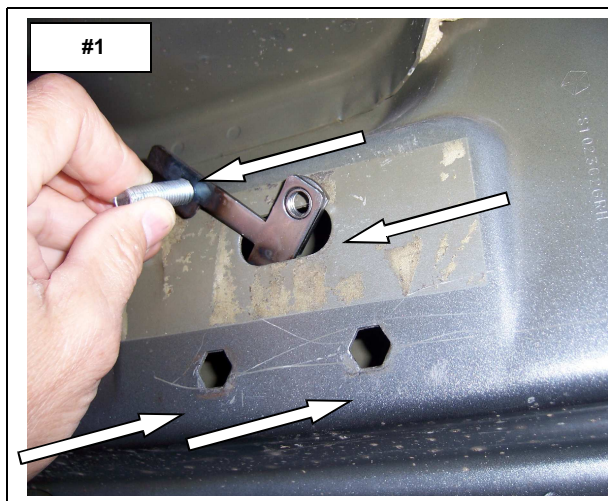
6 T-PLATE
6 D07 SIDE STEP MOUNTING BRACKETS
1 D361271D DRIVER SIDE STEP
1 D361271P PASSENGER SIDE STEP

INSTALLATION INSTRUCTIONS

READ THE INSTRUCTIONS COMPLETELY BEFORE YOU BEGIN THE INSTALLATION

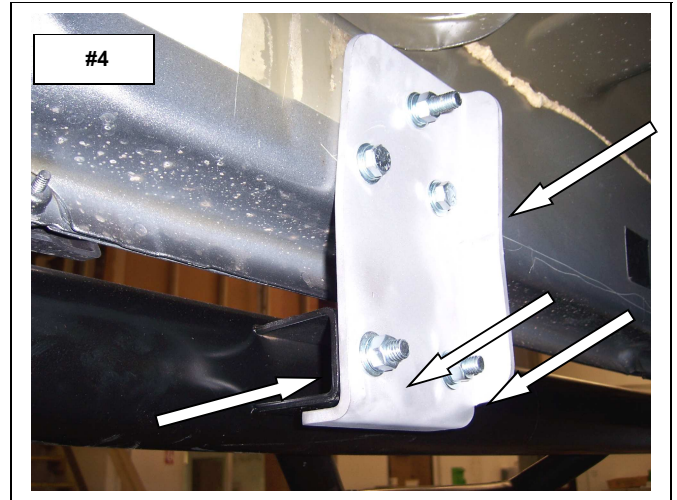
STEP 1. THIS INSTALLATION USES (3) MOUNTING BRACKETS PER SIDE. BEGIN BY INSTALLING THE SIDE STEP MOUNTING BRACKETS ON THE PASSENGER SIDE OF THE VEHICLE. LOCATE THE (2) HEXAGON SHAPED AND OBLONG HOLE IN THE BODY ROCKER PANEL AT THE FRONT OF THE CAB AND REMOVE THE TAPE COVERING THE OBLONG HOLE. INSERT (1) OF THE T-PLATES THROUGH THE OBLONG HOLE IN THE ROCKER PANEL AND POSITION THE PLATE INSIDE THE ROCKER PANEL AS SHOWN. **PHOTO #1**

NOTE: PLACE (1) VINYL GASKET TO THE T-PLATE, BEFORE INSERT INTO THE ROCKER PANEL.



STEP 2. ATTACH ONE OF THE MOUNTING BRACKETS TO THE BODY PANEL USING THE T-PLATE (2) 3/8" X 1 1/4" HEX BOLTS, (3) 3/8" FLAT WASHERS, (3) 3/8" LOCK WASHERS AND (1) 3/8" HEX NUT. HAND TIGHTEN. REPEAT THE ABOVE PROCEDURE TO INSTALL THE CENTER AND REAR MOUNTING BRACKETS. **PHOTO'S #2 & #3**

STEP 3. ATTACH THE PASSENGER SIDE STEP TO EACH OF THE MOUNTING BRACKETS USING (2) 3/8" X 1 1/4" HEX BOLTS, (4) FLAT WASHERS, (2) LOCK WASHERS AND (2) HEX NUTS. PHOTO #4



STEP 4. ALIGN THE SIDE STEP WITH THE VEHICLE AND TIGHTEN ALL MOUNTING BRACKET AND SIDE STEP NUTS AND BOLTS. REPEAT THE ABOVE PROCESS TO INSTALL THE DRIVER SIDE BRACKETS AND SIDE STEP.



**FOR TECHNICAL OR WARRANTY INFORMATION CALL:
TOLL FREE (888)427-4466 FAX (714)672-0278
GO RHINO! Products® 591 W. Apollo St. Brea, CA 92821**