



Installation Instructions

BR10 Front Bumper Replacement Part Number 24371T

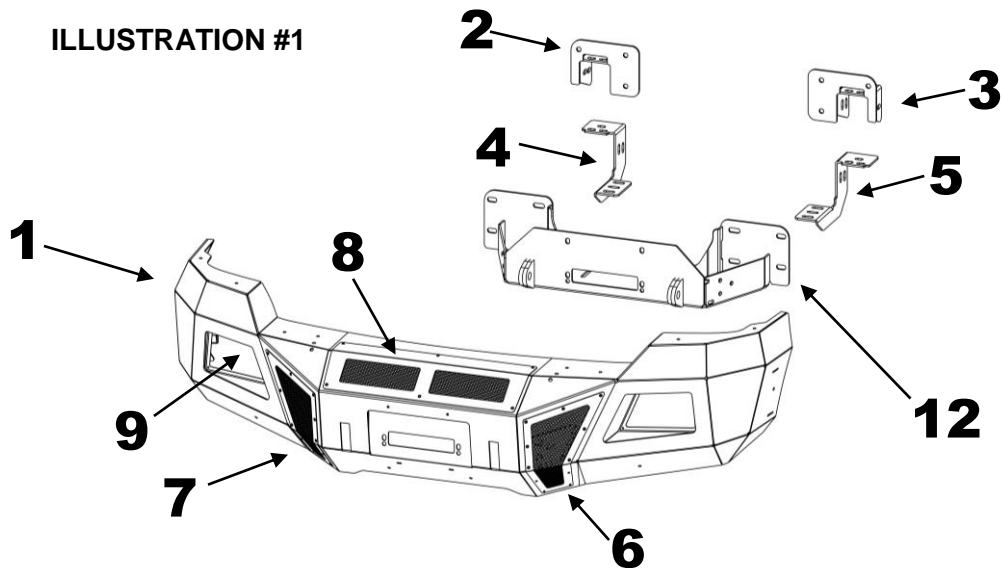
2011-2016 Ford F-250, F-350 Super Duty 2/4WD

Do not attempt to install this product on any vehicle other than the one listed above!

Parts List

Item	Qty.	Part #	Description	Item	Qty.	Part #	Description	Torque
1	1	24371T	Bumper Replacement shell	13	20		1/2" x 1 1/2" Hex Bolt	64 ft. lbs.
2	1		Passenger Frame Bracket	14	6		1/2" x 1 1/2" Carriage Bolt	64 ft. lbs.
3	1		Driver Frame Bracket	15	34		1/2" Flat Washer	
4	2		Driver Auxiliary Bracket	16	26		1/2" Lock Washer	
5	1		Passenger Auxiliary Bracket	17	20		1/2" Hex Nut	
6	1		Driver Vent Cover	18	6		7/16" x 2" Hex Bolt	42 ft. lbs.
7	1		Passenger Vent Cover	19	12		7/16" Flat Washer	
8	1		Winch Cover	20	6		7/6" Lock Washer	
9	2		Light Pod Plate	21	6		7/6" Hex Nut	
10	1		License Plate Bracket	22	38		1/4" x 3/4" Button Head Bolt	71 in. lbs.
11	4		Hole Plug	23	10		1/4" Nylon Lock Nut	
Required for Installation (Sold Separately)				24	2		3/8" x 1 1/4" Hex Bolt	26 ft. lbs.
12	1	24273TW	Mounting Plate/Winch Tray	25	2		3/8" Lock Washer	
				26	2		3/8" Flat Washer	
				27	2		3/8" Hex Nut	

ILLUSTRATION #1



Tool Required:

13mm, 15mm, 18mm, 7/16", 9/16" & 3/4" Sockets
13mm, 15mm, 18mm, 7/16", 9/16" & 3/4" Wrenches
Slotted Blade Screw Driver
5/32" Hex Key
Ratchet, Ratchet Extensions & Swivel Joint Adapter

Approximate installation time: 90 min

IMPORTANT INSTALLATION NOTES AND SUGGESTIONS

The pre-installed Mesh Winch and Vent Covers need to be removed using hand tools to slowly remove the bolts. Using an air assisted impact or ratchet will damage the bolt threads and the internal nut assembly in the bumper shell. Use of an appropriate anti-seize compound is highly recommended for re-installation, and tighten the bolts to the specified torque as overtightening could result in difficulty of future removal.

To maintain and care this product keep it clean and do not use abrasive cleaners or polish waxes. **Texture Painted Finish:** Mild liquid detergent may be used. **Polished Stainless & Semi-Gloss Painted Finishes:** We recommend using only non-abrasive automotive wax such as pure carnauba to avoid scratches and rust.

Read the installation instructions completely and verify that all of the parts listed are accounted for. If you have defective, missing or damaged parts or need assistance, please contact Go Rhino Products for fast, friendly customer service at: (888) 427-4466 or email: sales@gorhino.com

Front Bumper Removal

Step-1 Remove the plastic fasteners and rubber air deflector from the bumper and bottom of the vehicle, (Photo 1).

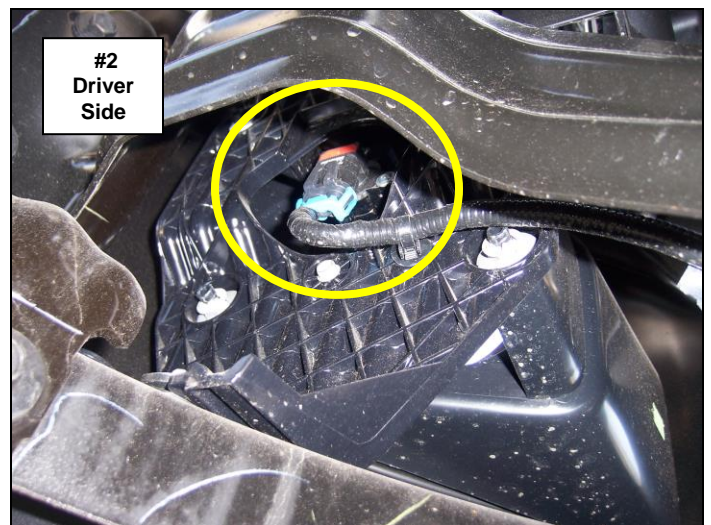
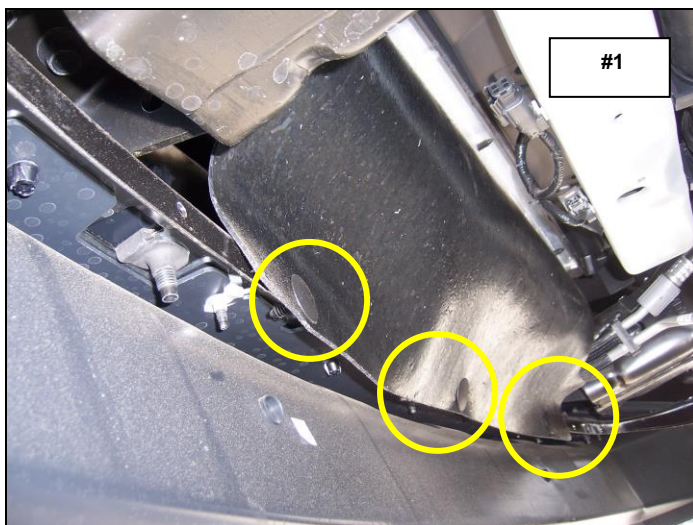
Note: If the vehicle has these options or equipment.

Fog Lights

Unplug the fog light wiring harness and remove the plastic fastener securing the wiring harness to the bumper, (Photo 2).

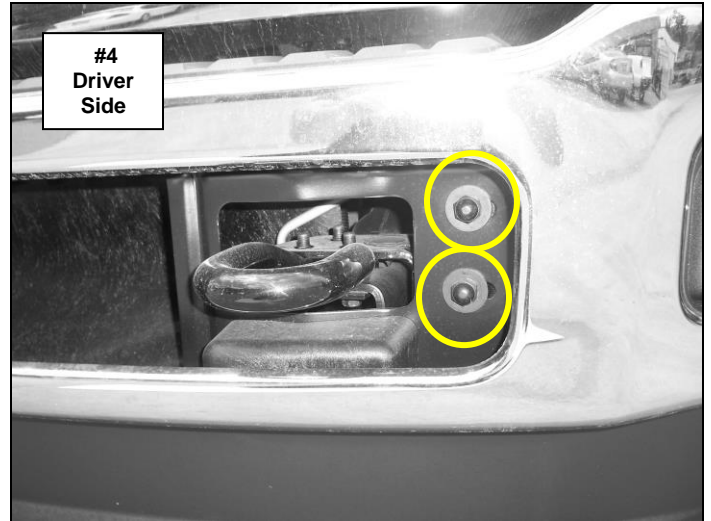
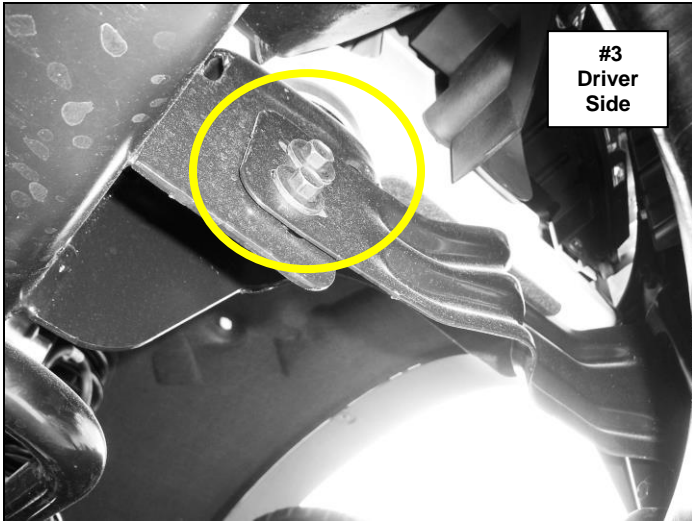
Engine Block Heater

Remove the plastic fastener securing the power cord to the bumper.



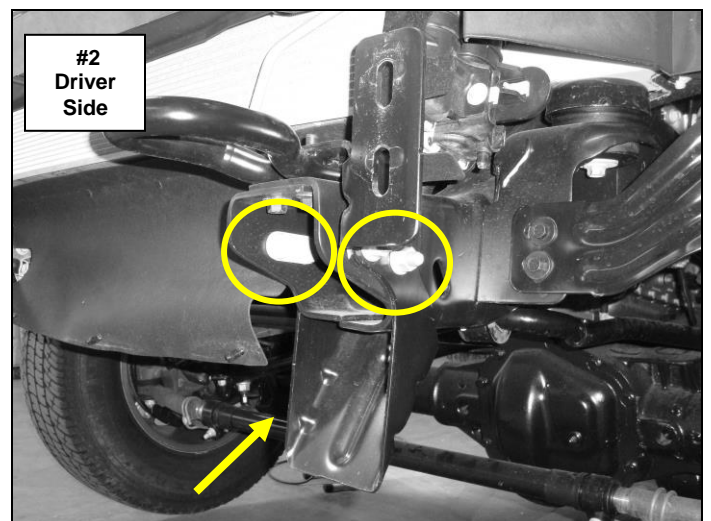
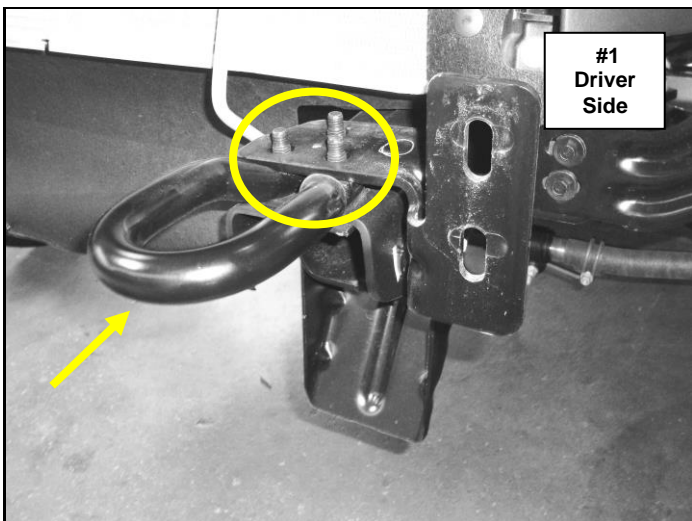
Step-2 Remove the bolts (2) per side securing the bumper support brackets to the bumper, and loosed the bolts (2) per side securing the support bracket to the vehicle frame, (Photo 3).

Step-3 Remove the bolts (2) per side securing the front of the bumper to the bumper brackets, (Photo 4). Remove the bumper from the vehicle and set it aside.



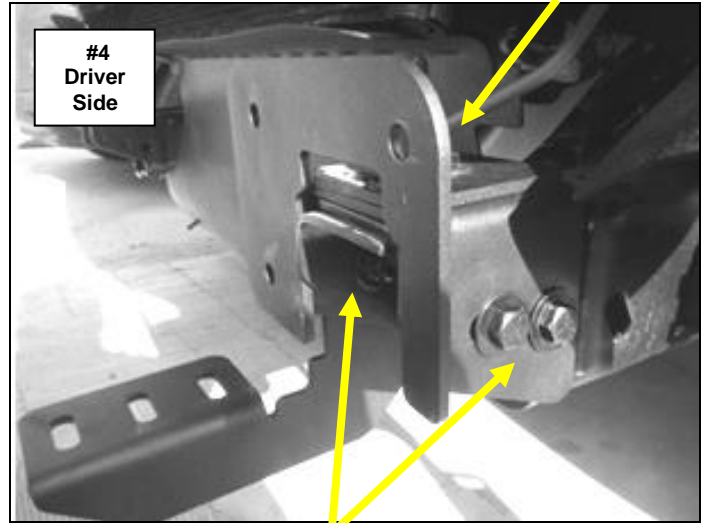
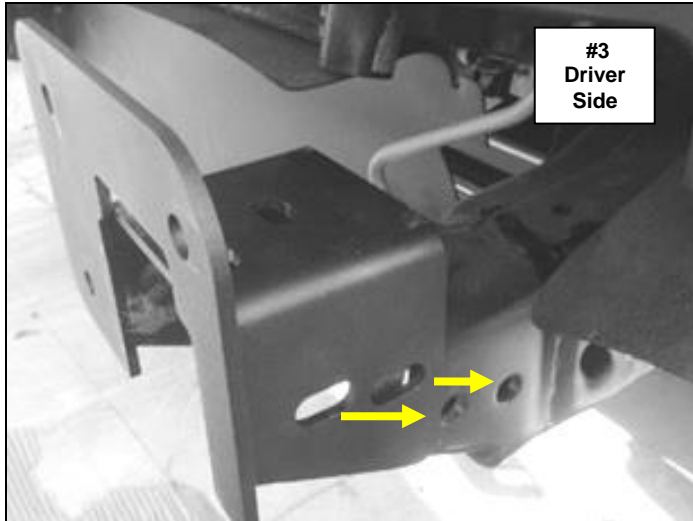
BR 10 Bumper Replacement Installation

Step-1 Remove the bolts (3) per side securing the tow hooks and bumper bracket assembly to the frame, (Photo 1). If equipped remove the nuts and bolt plates securing the under rider guards to the frame, (Photo 2).



Step-2 Install the driver's side frame bracket by positioning the bracket over the top and sides of the frame. Position the driver side auxiliary bracket on top of the frame bracket align the holes and secure the auxiliary bracket and frame bracket to the top of the frame using (3) 7/16" x 2" hex bolts (6) 7/16" flat washers, (3) 7/16" lock washers and (3) 7/16" hex nuts. Secure the frame bracket and auxiliary bracket to the sides of the frame using (4) 1/2" x 1 1/2" hex bolts, (8) 1/2" flat washers, (4) 1/2" lock washers and (4) 1/2" hex nuts, (Photo 3 & 4). Leave the nuts and bolts loose for final adjustment. Repeat this step to install the passenger side brackets.

7/16" hex bolts, washers & hex nuts



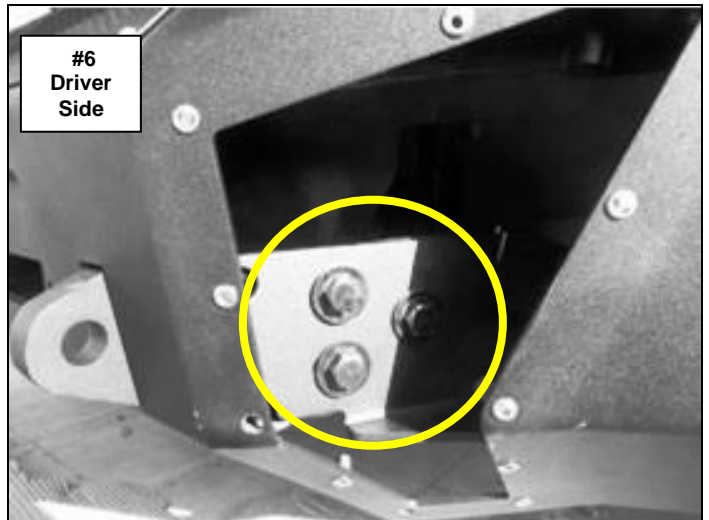
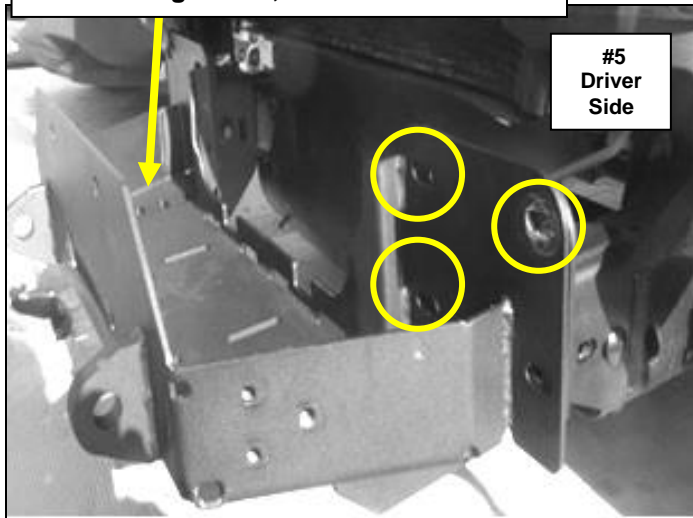
1/2" hex bolts, washers & hex nuts

Step-3 Position the winch tray on top of the auxiliary brackets. Secure the winch tray to each frame bracket using (3) 1/2" x 1 1/2" hex bolts, (3) 1/2" flat washers, (3) 1/2" lock washers and (3) 1/2" hex nuts, and to the auxiliary bracket using (3) 1/2" x 1 1/2" carriage bolts, (3) 1/2" flat washers, (3) 1/2" lock washers and (3) 1/2" hex nuts, (Photo 5).

Adjust and position the winch tray mounting flanges approximately 1/4" off center from the frame bracket flanges toward the driver side of the vehicle and tighten all factory and supplied nuts and bolts.

Step-4 With assistance lift the bumper shell up to the vehicle, align the holes in the bumper shell brackets with the weld nuts on the winch tray and secure the bumper shell brackets to each side of the winch tray using (3) 1/2" x 1 1/2" hex bolts, (3) 1/2" lock washers and (3) 1/2" flat washers, (Photo 6). Leave the bolts loose for final adjustment.

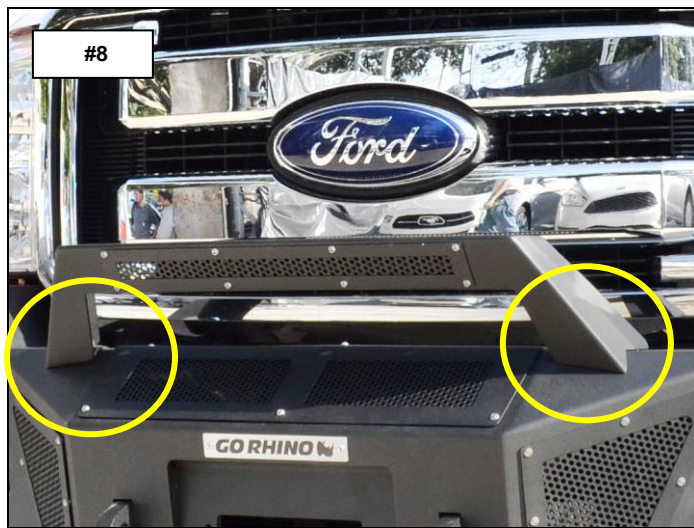
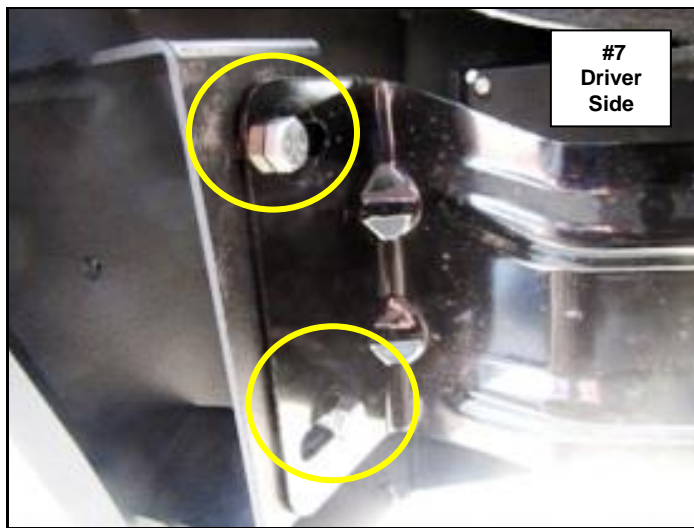
1/2" carriage bolts, washers & hex nuts



Step-5 Align the holes and attach each of the factory bumper support brackets to the bumper shell support brackets using (2) 3/8" x 1 1/4" hex bolts, (2) 3/8" flat washers, (2) 3/8" lock washers and (2) 3/8" hex nuts, (Photo 7).

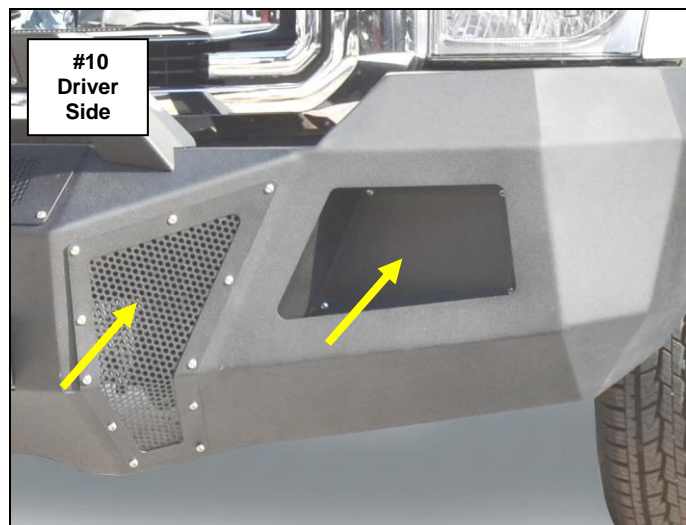
Step-6 With assistance, adjust and hold the bumper shell visual alignment, then tighten the support bracket factory and supplied nuts and bolts then all remaining nuts and bolts.

If installing a winch, install the roller fairlead to the bumper shell at this time. Refer to the winch manufacturer's instructions for installation. If installing an optional light bar, install the light bar to the bumper shell at this time. Refer to the light bar instructions for installation.

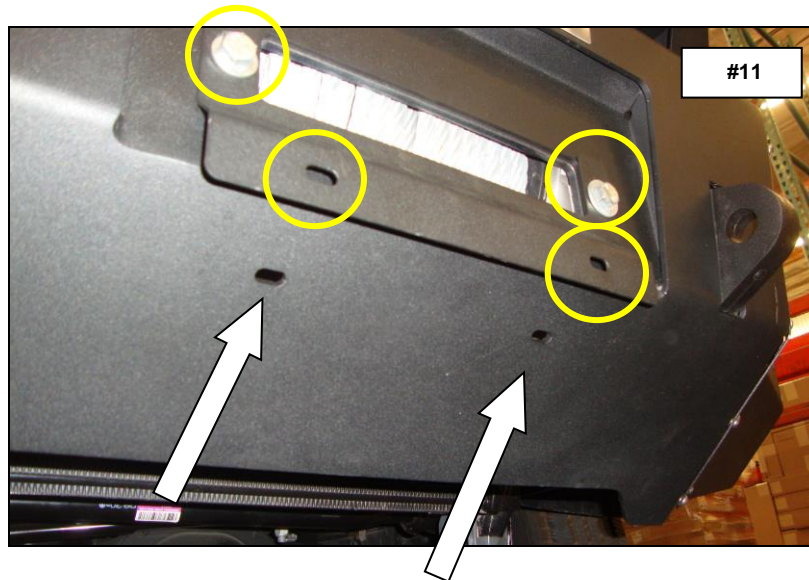


Step-8 Install the winch cover and driver and passenger side front vent covers to the bumper shell using the supplied 1/4" x 3/4" button head bolts, (Photo 9 & 10). **Note:** Do not over tighten bolts, reference tightening torque (71 in. lbs.).

Step-9 Install the flush mount light pods to the bumper shell using (4) 1/4" x 3/4" button head bolts and (4) 1/4" nylon lock nuts, (Photo 10).



If your state law requires a front license plate, attach the license plate bracket to the holes in the face of the bumper shell, using the supplied 3/8" bolts, washers and nuts, and the license plate to the (2) obround holes in the license plate bracket using the supplied 1/4" bolts and nuts. nuts, (Photo 11).



If installing a winch, attach the license plate directly to the (2) obround holes in the lower face of the bumper shell using the supplied 1/4" bolts and nuts.

Remember to check and retighten all factory and supplied nuts and bolts periodically. nuts, (Photo 11).