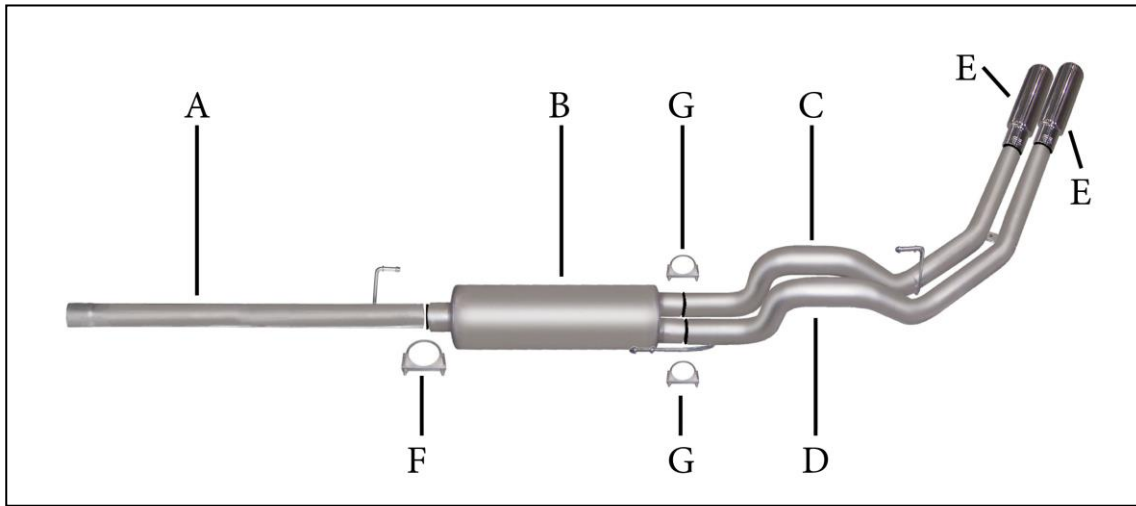


INSTRUCTION MANUAL

**CAT-BACK DUAL SPORT STAINLESS EXHAUST
 FORD F150 SVT RAPTOR TRUCK 6.2L, V8 4WD
 SUPER CREW, SHORT BED**

PART # 69216B



ITEM	PART#	QUANTITY	DESCRIPTION
A	999700748S	1	3" STAINLESS HEADPIPE
B	789800S	1	STAINLESS SUPERFLOW MUFFLER
C	1397-701133S	1	2.5" STAINLESS PASSENGER SIDE TAILPIPE
D	1396-701134S	1	2.5" STAINLESS DRIVER SIDE TAILPIPE
E	500640-B	2	BLACK CERAMIC TIPS
F	OHD300	1	3" CLAMP
G	5757	2	2.5" CLAMP
H	BO-906	1	BOLT KIT FOR TAILPIPES

BOX – 54 X 12 X 20

Thank you for purchasing our GIBSON PERFORMANCE EXHAUST SYSTEM for your vehicle.
 If you need further assistance, please do not hesitate to call our Technical department at
 1-800-528-3044 Monday through Friday, 8:00 am to 5:00 pm

EXHAUST INSTALLATION #69216B

When installing this exhaust system make sure to use proper safety precautions. Use jack stands when working under the vehicle, set parking brake, block tires and use safety glasses and gloves. Allow exhaust to cool before attempting installation. Severe injury or burns could occur if safety measures are not taken.

SUGGESTED TOOLS:

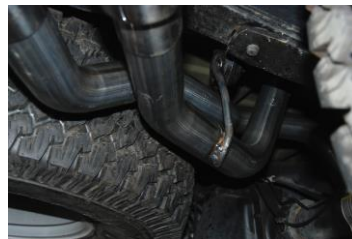
HACKSAW, JACKSTAND, 1/2" WRENCH & SOCKET, 9/16" SOCKET & WRENCH, WD-40, MEASURING TAPE.



TO REMOVE YOUR STOCK EXHAUST, MEASURE 6" FROM THE 2-BOLT FLANGE LOCATED IN FRONT OF YOUR STOCK MUFFLER AND CUT.



INSTALL DRIVERS SIDE TAILPIPE # D INTO MUFFLER 1 1/2" TO 2". INSERT HANGERS INTO RUBBER GROMMETS, USE CLAMP # G TO SECURE PIPE TO MUFFLER. DO NOT TIGHTEN. THE TAB ON THIS PIPE SHOULD GO ON BOTTOM OF PASSENGER SIDE PIPE USE BOLT KIT # H TO SECURE TOGETHER.



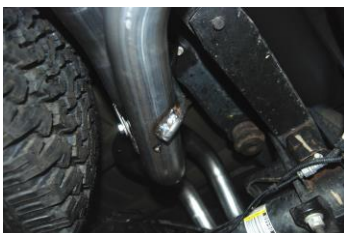
INSTALL HEADPIPE # A INTO STOCK PIPE. THE END OF THE PIPE SHOULD BE AT THE 12 O'CLOCK POSITION, ATTACH WITH FACTORY CLAMP. DO NOT TIGHTEN. INSERT WELDED HANGER INTO RUBBER GROMMET.



INSTALL MUFFLER # B ONTO HEADPIPE 1 1/2" TO 2". USE CLAMP # F TO SECURE MUFFLER TO HEADPIPE. DO NOT TIGHTEN. USE A JACK STAND TO HOLD UP THE MUFFLER. OUTLETS SHOULD BE LEVEL.



Install stainless steel tips. Clamp down. When you have everything in place, firmly tighten all bolts and clamps down securely. Use stainless steel cleaner and a Scotch Brite pad weekly to prevent tip from discoloration.



INSTALL PASS. SIDE TAILPIPE # C INTO MUFFLER 1 1/2" TO 2". INSERT HANGER INTO RUBBER GROMMET, USE CLAMP # G TO SECURE PIPE TO MUFFLER. DO NOT TIGHTEN.

Inspect all fasteners after 25-50 miles of operation and re-tighten as necessary

GIBSON EXHAUST systems are designed on a factory stock vehicle. Any aftermarket products installed could increase the sound levels of this Exhaust. **Make sure there is a 1" clearance from ALL rubber brake lines, shock boots, fuel lines, tires, etc to prevent heat related damage .**