



***baja designs***<sup>®</sup>  
THE SCIENTISTS OF LIGHTING

## **LP9/LP6 Pro/Racer Upfitter Lockout Harness Instructions 64-0167**



185 Bosstick Boulevard • San Marcos • CA • 92069

Phone 760-560-2252 X3 • Fax 760-560-0383

[info@bajadesigns.com](mailto:info@bajadesigns.com) • [www.bajadesigns.com](http://www.bajadesigns.com)



***baja designs***®  
THE SCIENTISTS OF LIGHTING

## LIMITED LIFETIME WARRANTY

Baja Designs proudly offers a LIFETIME WARRANTY against manufacturer's defect on all the products that we manufacture.

These are comprehensive warranties; other than the exclusions below – you're covered. If your LED or HID bulb burns out, you're covered. Additionally, cutting off our connector or changing your lenses does not automatically void your warranty.

### **Exclusions:**

Installation errors, abuse, misuse or crash damage. You must be the original owner of the product and can supply proof of purchase.

Baja Designs manufactures its own products as well as resells products manufactured by others. Baja Designs makes no express or implied warranties on products not manufactured by Baja Designs including without limitation any warranties or merchantability and fitness for a purpose. We will however, pass on all warranties made by the manufacturer, who has sole responsibility for performing such warranties.

Baja Designs will pay the freight if your product is less than 90 days old, otherwise defective products must be returned to Baja Designs, Inc., freight prepaid. At our option, we will repair or replace items in question and return them at no charge. If the identical product is no longer available, we will replace with a similar product of equal value. Baja Designs Inc. will not be responsible for any indirect or consequential damages in connection with defective merchandise.

Items purchased through a Baja Designs authorized dealer must be returned through the dealer. Only available on LED auxiliary lights and product must be in sellable condition at MSRP. Product that has been damaged in any way after the original purchase date will be excluded from this guarantee.

### **Indemnification:**

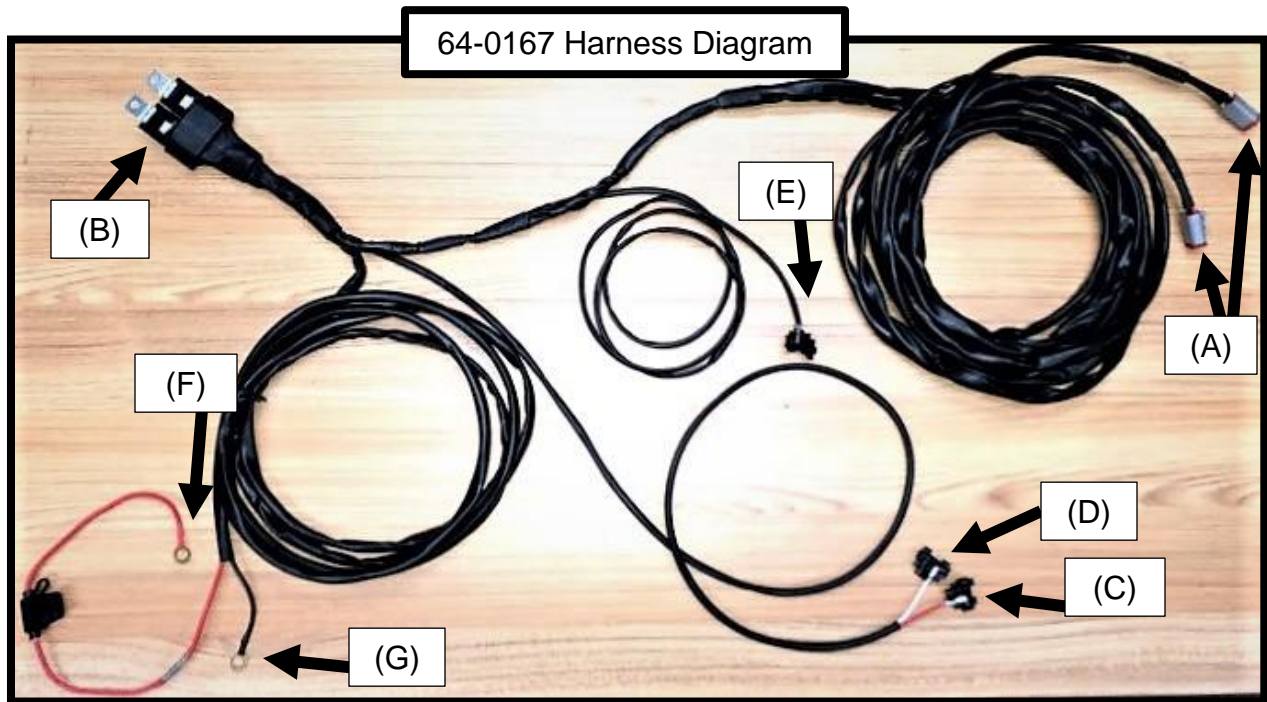
**Buyer hereby acknowledges off-roading, racing and driving at night are dangerous activities and that the products and/or supplies purchased from Baja Designs are used in an inherently dangerous activity that may endanger life and limb; and in no event shall the seller, or seller's heirs and assigns, be held liable for consequential damages, nor shall seller's liability on any claim for damages arising out of or connected with the sale, delivery, or use of purchased products and/or supplies exceed the purchase price of the products and/or supplies.**



**Upfitter Lockout Harness Instructions**

**Tools Required**

- Circuit test light or multimeter
- Pliers
- 10mm or ½ socket (Battery terminal size)
- Crimps



**(A) Light Plug Leads**

**(B) Dual Relays**

**(C) Low Beam Wire Lead with Splice 10A (red)**

**(D) Hi Beam Wire Lead with Splice <1A (white)**

**(E) Backlight Wire Lead with Splice**

**(F) Positive (+) Battery Lead**

**(G) Negative (-) Battery Lead**

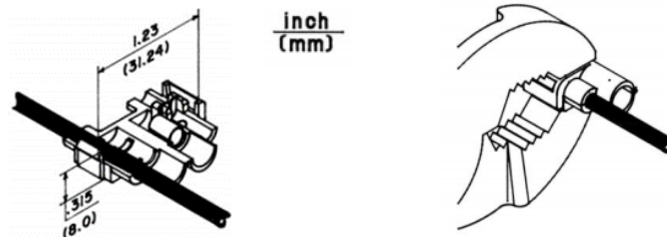
**Instructions:**

1. Route the light plug leads (A) through the engine compartment to the lights.
2. Mount the dual relays (B) on an existing bolt inside the engine bay away from hot and/or rotating components (No grounding necessary).



**baja designs**<sup>®</sup>  
THE SCIENTISTS OF LIGHTING

3. If you wish to use the backlight function on your lights, use the backlight wire lead with splice (E) to tap into the vehicles DRL (Daytime running light) circuit. This can be achieved by finding a wire that powers a DRL and clasp the splice connector over it with pliers. Test the wire for keyed power with the multimeter, or test light before attempting to power on backlights with the DRL wire.



4. To wire the low beam function of the harness, a **10A circuit must be used**. Cut and strip the desired upfitter wire on your vehicle. Test the function of the upfitter wire with the multimeter or test light before powering on the lights. Remove splice connector from the low beam lead (C). Use the provided female bullet connector and cover to make a crimped connection on the upfitter wire. Then connect the harness to the upfitter wire. If crimping is not possible, the splice connector can be used.
5. For the high beam function, the amperage requirement is **less than 1A** for the circuit. Cut and strip the desired upfitter wire on your vehicle. Test the function of the upfitter wire with the multimeter or test light before powering on the lights. Remove the splice connector from the high beam lead (D). Use the other female bullet terminal and cover to make a crimped connection on the upfitter wire. Then connect the harness to the upfitter wire. If crimping is not possible, the splice connector can be used on the upfitter wire.  
**Alternatively**, if you would like to have your OEM high beam switch turn on your LP9/LP6 high beam, clasp the splice connector over a high beam wire behind the headlights. Test high beam wire with multimeter or testlight before powering lights.
6. Attach the positive (+) battery lead (F) to your positive (+) battery terminal.
7. Attach the negative (-) battery lead (G) to your negative (-) battery terminal.

Tie up all wires away from hot and/or rotating components.

Your install is now complete! Thank you for choosing Baja Designs.